

Required:


- 1x Windows 10/11 Computer
- 1x Ethernet Switch/Router
- Ethernet Cables (Depends on how many units you are upgrading)
- Your GWLRSSKIT4K Units (Both TX and RX)
- GWLRSSKIT4K Control Management System Program (filename: GWLRSSKIT4K_cms_tool Setup 0.0.4)
- 1x HDMI Cable

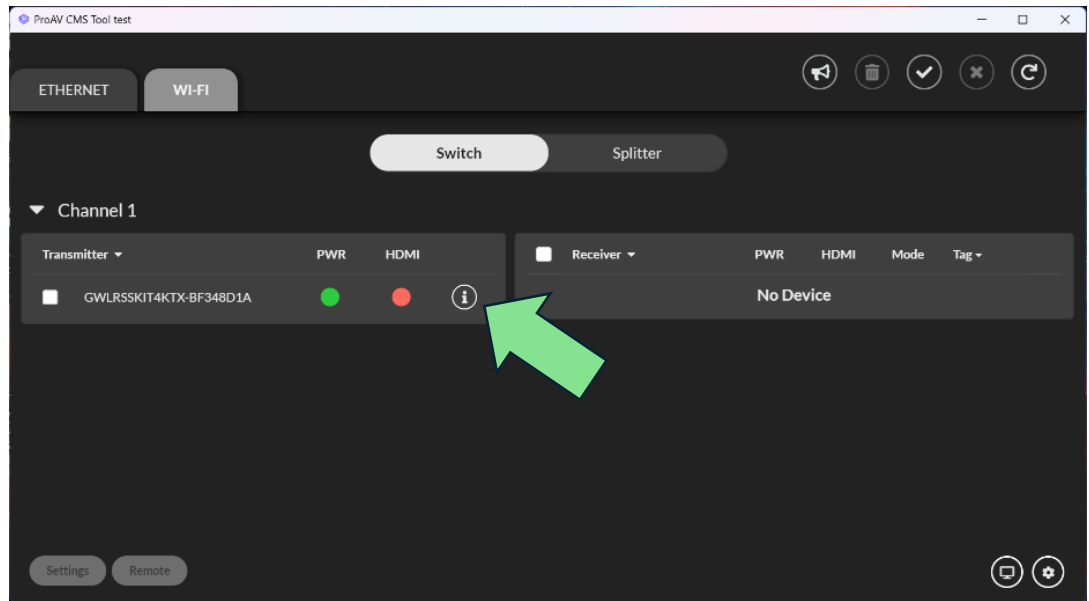
How to check your current firmware version


There are 2 ways to confirm your current firmware version.

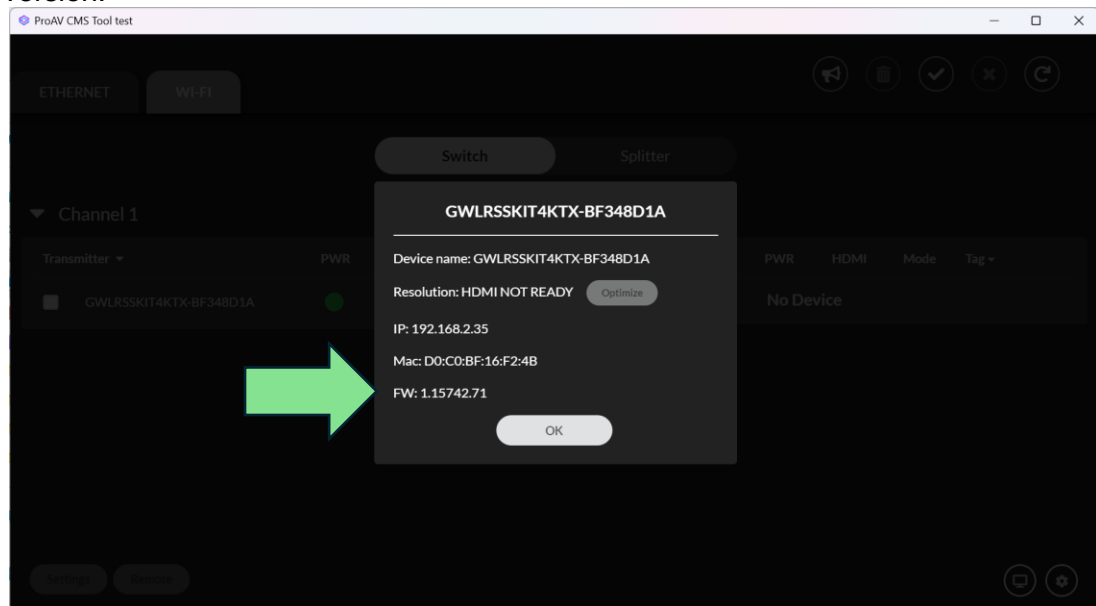
1. Plug in and power on your GWLRSSKIT4K receiver and check the splash screen. The current firmware version will be in the bottom right corner.



2. When loaded into the GWLRSSKIT4K Control Management System Program, there will be an  icon next to a connected transmitter or receiver.



Pressing this  icon will bring up the devices information which includes a firmware version.




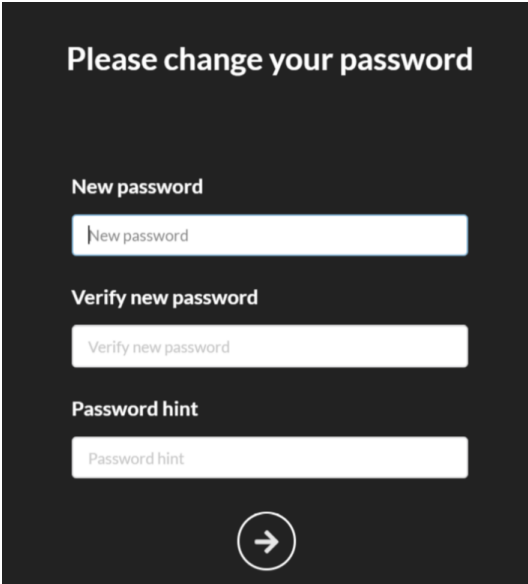
Firmware Update Instructions

Steps:


Notes: To update the firmware utilizing the Over the Air updates, a laptop, router, and internet connection is needed.

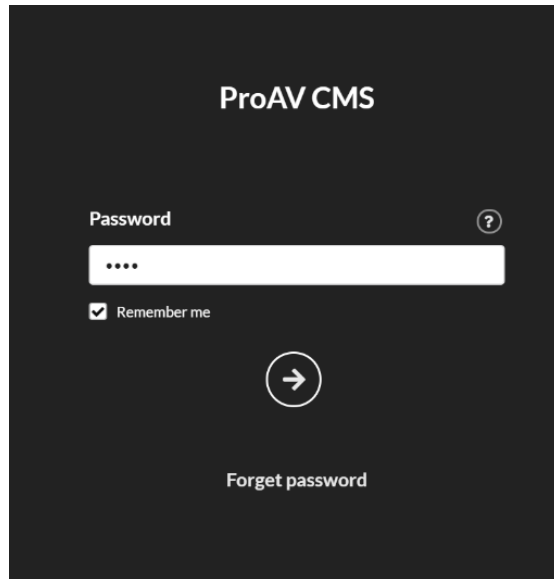
1. Power on the GWLRSSKIT4K Transmitter and Receiver.
2. Ensure you have your TX and RX on the same setting (either both on Switch mode or both on Splitter mode).
3. Using an ethernet cable, connect the GWLRSSKIT4K Transmitter and Receiver to your wired/wireless router and ensure that your computer running the GWLRSSKIT4K Control Management System Program is connected to the same network.
4. Install GWLRSSKIT4K Control Management System Program (filename: GWLRSSKIT4K_cms_tool Setup 0.0.4) onto your computer.

- a. Input a new password, verify it and include a password hint. Then click on the arrow  icon to proceed.




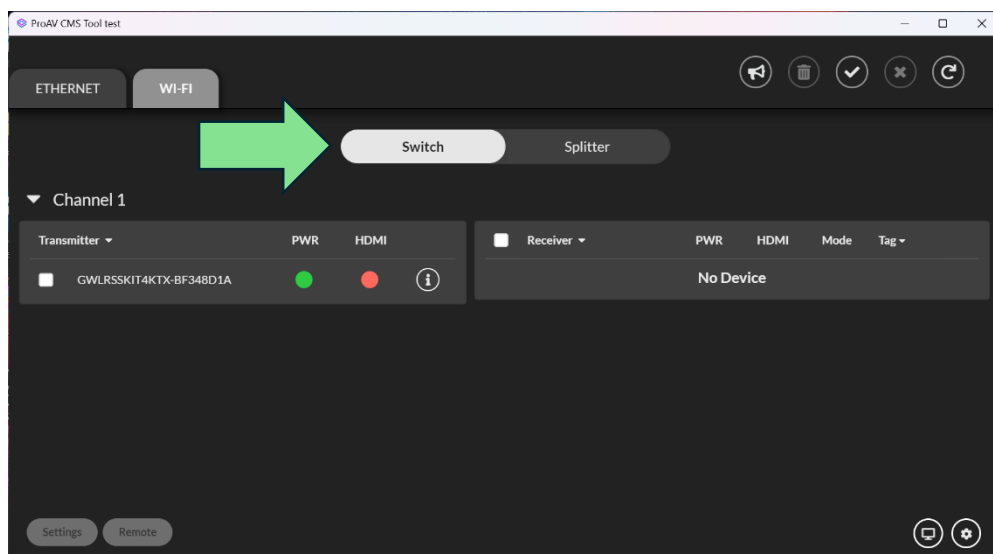
The screenshot shows a dark-themed interface with the title "Please change your password". It contains three input fields: "New password", "Verify new password", and "Password hint". Each field has a light gray placeholder text. At the bottom center, there is a circular button with a white right-pointing arrow.

- b. When prompted, input the password you created, and select “Remember Me” so when you launch the application again, you will not have to type the password out. Then click on the arrow  icon to proceed.

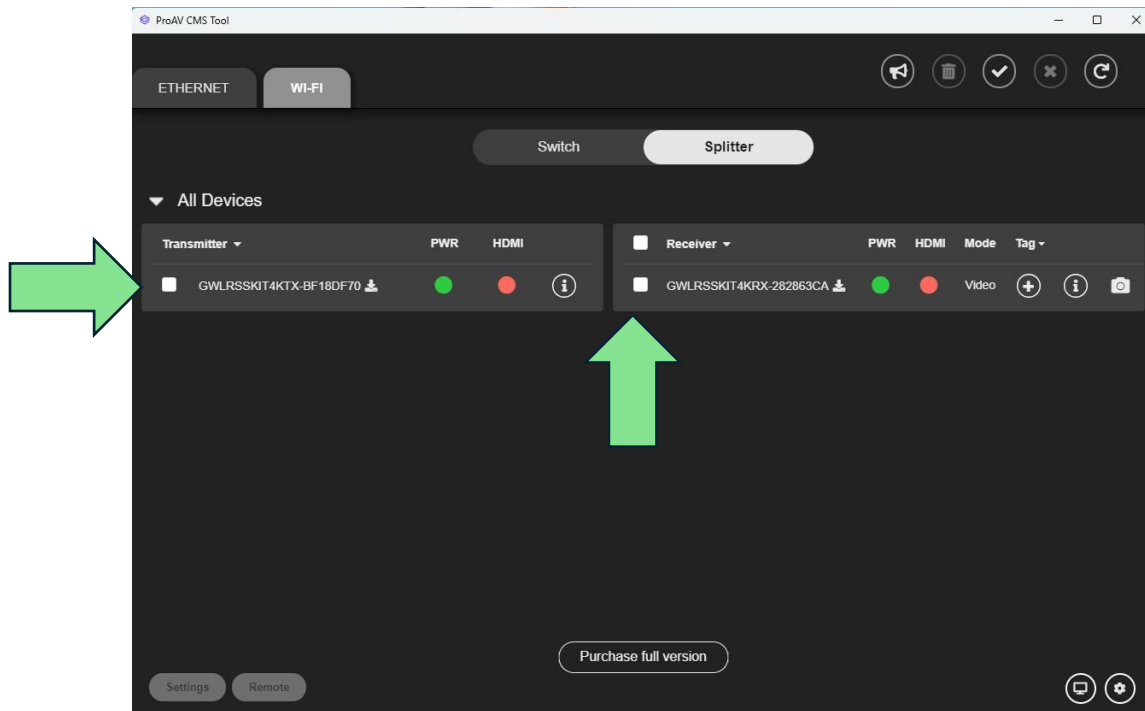


5. Click on the “Wi-Fi” tab and you will need to select either “Switch” or “Splitter” at the top of the windows depending on which mode the connected devices are set to.

Note: If you do not see your transmitter and receiver in the list, you can click on the refresh  button on the top right of the window to re-detect the connected devices.



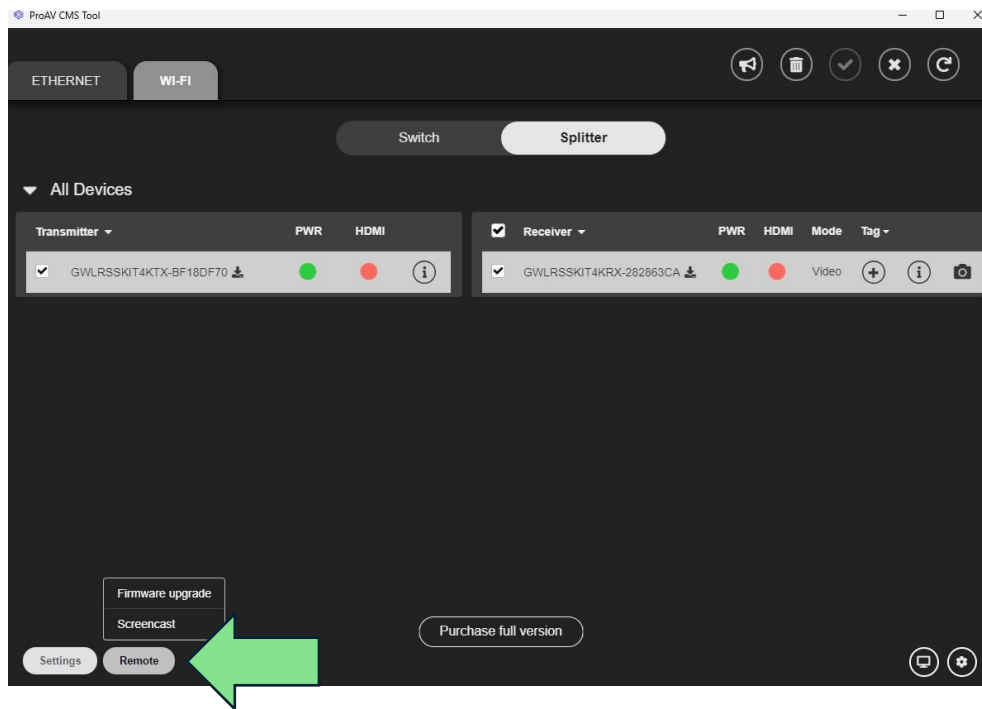
6. You will need to select which device you want to upgrade by checking the blank white square on the left of the device name.



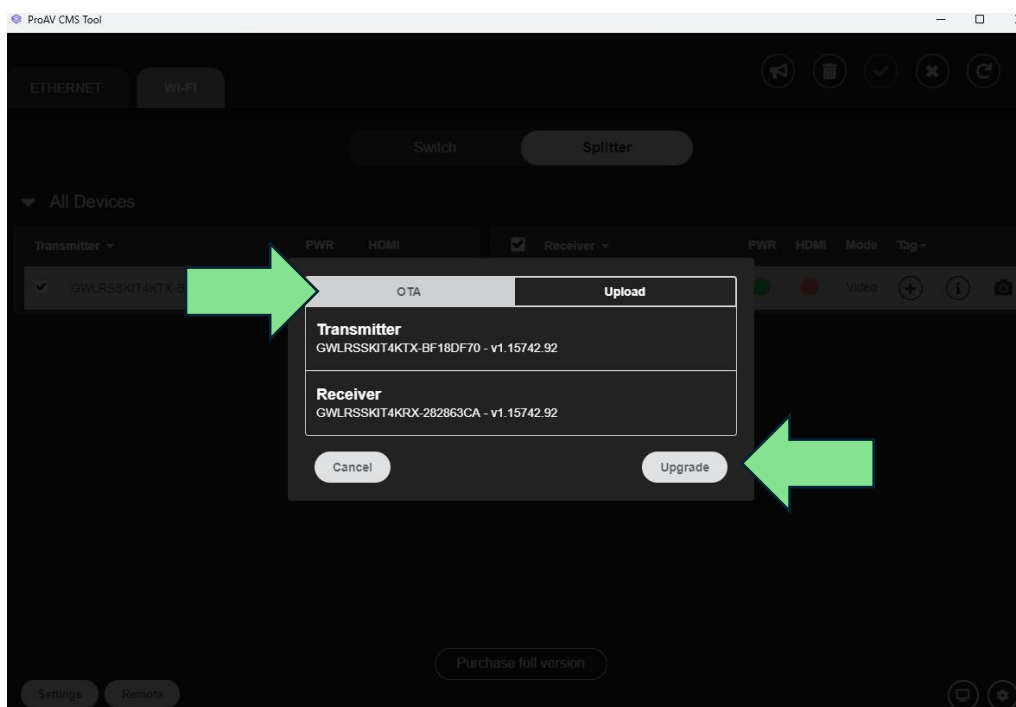
You will have the option to choose your preferred method of updating the firmware. For this case, you will be shown two methods.


Method 1: OTA Update

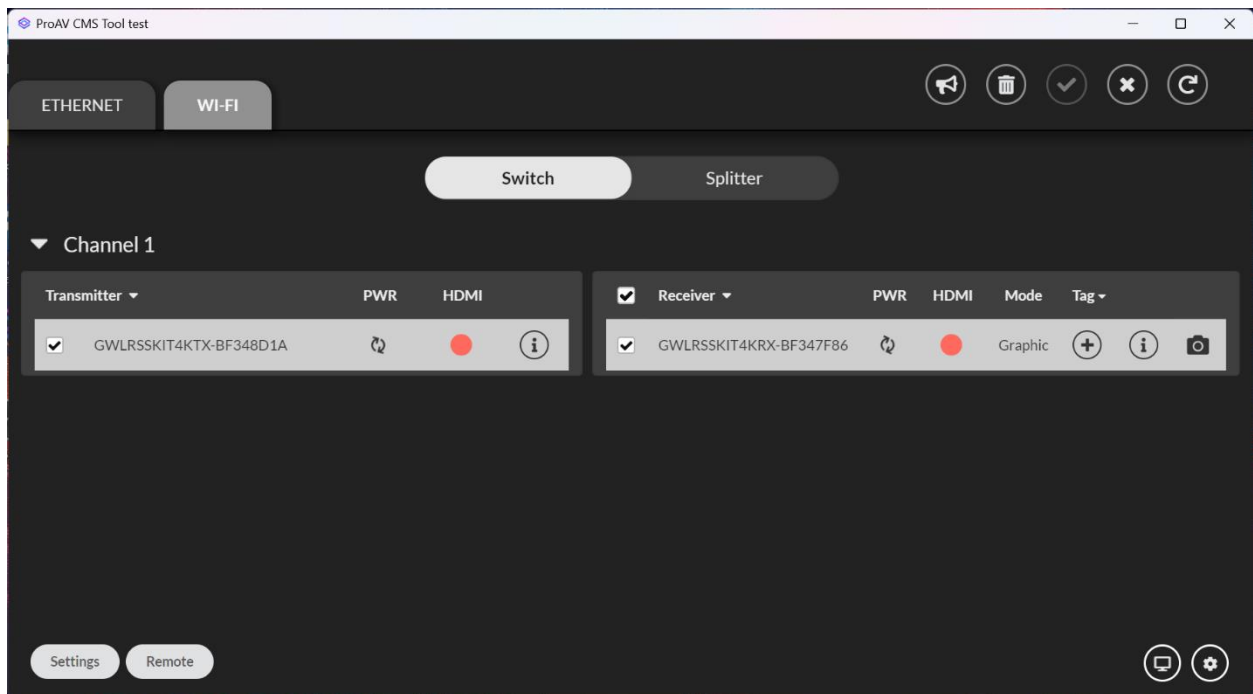
At the bottom left of the screen, click on “Remote” and then press “Firmware Upgrade.” You will see the option that shows OTA or Upload.



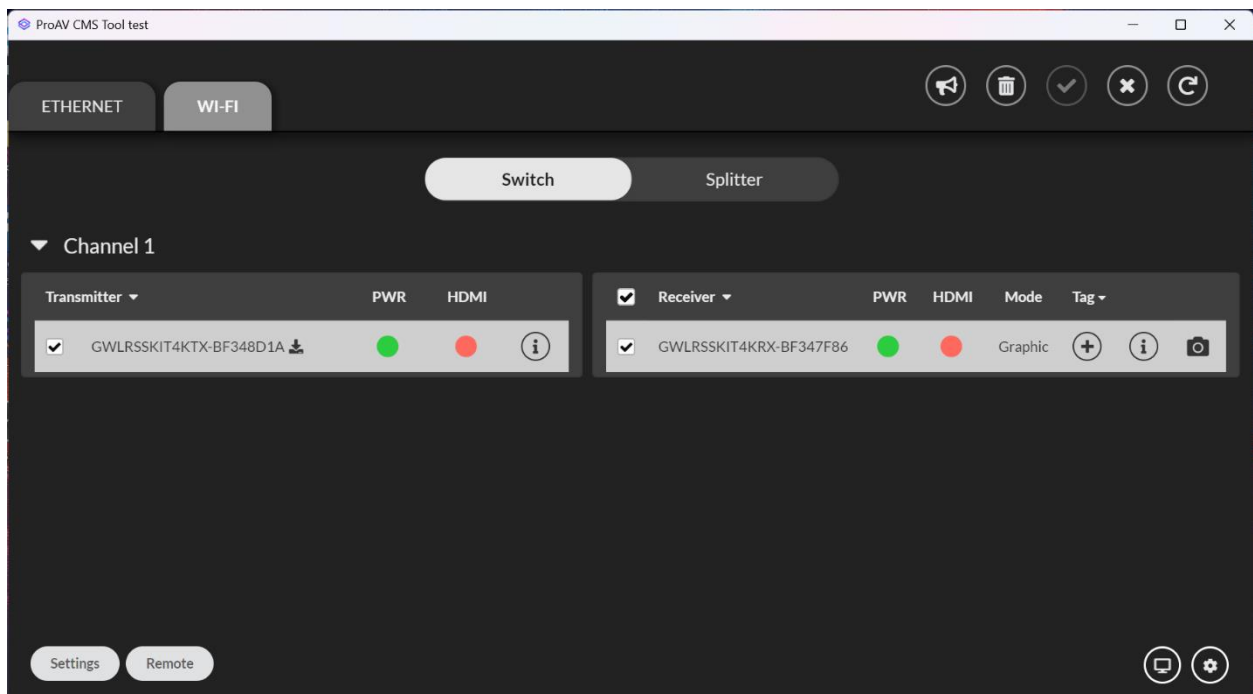
Click on OTA and it will show what devices are available to be updated and the new firmware version. Then click “Upgrade.”



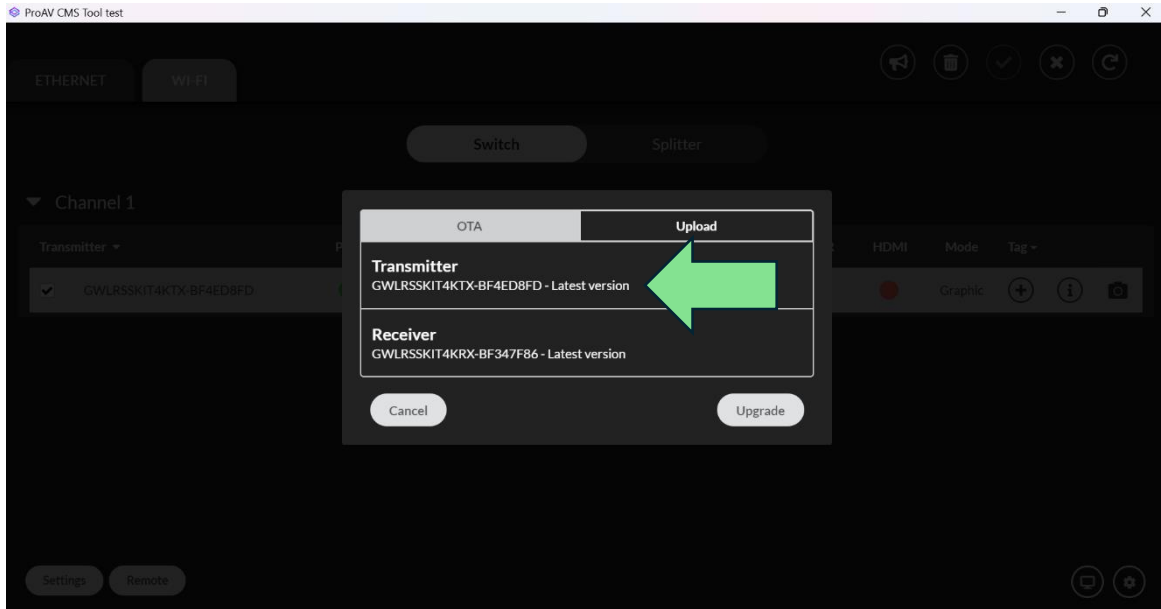
Once the upgrade process is started, the upgrading devices will disconnect and show a spinning  symbol under the “PWR” category.



Once complete, the PWR and HDMI symbols will return to green.



Note: If the connected device is already updated to the most recent version, then it will be marked as “Latest version.”



IMPORTANT: Once successful in uploading to the firmware file. Please re-pair the Transmitter and Receiver by powering on the transmitter and receiver and plugging one end of an HDMI Cable into the Input of the Transmitter and the other end of the HDMI cable to the Output of the Receiver. For further instructions on pairing Transmitters and Receivers, refer to the user manual at IOGEAR.COM

Once paired, the devices are updated and free to be used.

Method 2: Manual Update

At the bottom left of the screen, click on “Remote” and then press “Firmware Upgrade.” You will see the option that shows OTA or Upload.

Click on Upload and you will be prompted to select a local file to upload to your devices for the firmware upgrade. Navigate to the proper firmware file. **Please note that the Transmitter and Receiver will use different files to upgrade their firmware.**

The firmware files are available on our website:

Click on the file you have navigated to and select it.

If compatible, you will get a green checkmark, and you can click on Upgrade. If you get a red cross, the file is not compatible with the Transmitter or Receiver of the GWLRSSKIT4K, in which case please repeat the previous steps to locate the proper firmware file.

IMPORTANT: Once successful in uploading to the firmware file. Please re-pair the Transmitter and Receiver by powering on the transmitter and receiver and plugging one end of an HDMI Cable into the Input of the Transmitter and the other end of the HDMI cable to the Output of the Receiver. For further instructions on pairing Transmitters and Receivers, refer to the user manual at IOGEAR.COM

Once paired, the devices are updated and free to be used.