



# Installation Guide

Bluetooth® 2.1 USB Micro Adapter

GBU421

PART NO. M1224-a



## Welcome

Thank you for purchasing one of the most feature-rich Bluetooth® to USB adapters available. IOGEAR's Bluetooth® to USB adapters are first-rate wireless connectivity accessories designed to help reduce the frustration of dealing with cable glut in your home or office. These adapters allow computers with USB connections to become Bluetooth enabled computers. They comply to Bluetooth® 2.1 and USB 1.1 specifications, and provide users with a 2.1Mbps data rate. They also enable wireless Personal Area Network (PAN) connectivity to Bluetooth enabled devices such as PDA's, printers, cellular phones, computers, etc.

We hope you enjoy using your IOGEAR Bluetooth® 2.1 USB Micro Adapter, another connectivity solution from IOGEAR.

# Table of Contents

Package Contents	5	Connect to Network Access	50
Overview	6	Windows XP	50
Features	8	Windows Vista	53
Requirements	9	Windows 7	57
Introduction	10	Pairing	60
Installation-Windows XP	11	Installation-Windows XP Service Pack 2 / Windows Vista	
Installation – Windows Vista / 7	14	Service Pack 1	62
Initial Bluetooth Configuration Wizard – Windows XP	18	Specifications	66
Initial Bluetooth Configuration Wizard – Windows Vista	22	Technical Support	67
Software Un-installation	24	Federal Communications Commission (FCC) Statement	68
Installation - Mac OS X	25	CE Statement	70
Connect to Bluetooth Enabled Cellular Phone / PDA	28	Limited Warranty	71
Windows XP	28	Contact	72
Windows Vista	32		
Windows 7	36		
Connect to a Bluetooth Enabled Printer	39		
Windows XP	39		
Windows Vista	43		
Windows 7	47		

## Package Contents

This package contains:

- 1 Bluetooth® 2.1 USB Micro Adapter
- 1 Driver CD
- 1 Quick Start Guide
- 1 Warranty Card / Registration Card

**The Bluetooth Installation CD contains the following:**

Bluetooth drivers for Windows 2000/XP/Vista/7

User Manual for IOGEAR Bluetooth® 2.1 USB Micro Adapter

\* If any items are damaged or missing, please contact your dealer.

## Overview

Bluetooth is a low-power wireless networking standard which uses short radio waves to allow electronic devices to communicate with each other without using cables.

The following applications are supported by Bluetooth® technology:

- Synchronize your Bluetooth PDA with your computer.
- Send your business card to anyone who has a Bluetooth device.
- Send or receive files to or from anyone who has a Bluetooth enabled device.
- Chat with anyone who has a Bluetooth enabled computer.
- Play a one-on-one serial game without a cable.
- Send an e-mail without being wired to the network.
- Dial up to the Internet on your computer over your Bluetooth cellular phone.
- Send a fax from your computer over your Bluetooth cellular phone.
- Transfer data between your cell phone and PC.



Most Bluetooth-enabled devices have the capability to act as:

- A Bluetooth server - these devices provide one or more services, such as access to the Internet, or to other Bluetooth devices.
- A Bluetooth client - these devices use the service(s) provided by Bluetooth servers.

Most Bluetooth devices that can act as both server and client, and can often do both at the same time.

## Features

- Eliminates cables between your computers
- Controls and communicates with Bluetooth enabled devices
- Enables wireless Personal Area Network (PAN) connectivity
- Bluetooth specification 2.1 compliant
- USB specification 1.1 compliant
- Up to 10 meter (30 feet) wireless working distance for Bluetooth® 2.1 USB Micro Adapter.
- Up to 2.1 Mbps data rate
- Small form factor makes it easy to carry and place
- Crisp, easy, and fast installation and setup
- Built-in security to assure the privacy of your communication – Pairing, Encryption, and Authentication
- PC and Mac compatible

# Requirements

## **System Requirements**

Hardware Requirements:

- Available USB port

## **Operation System:**

For PC: Windows 2000/XP/Vista/7

For Mac: OS X v10.3.9 or later

## Introduction

IOGEAR®'s Bluetooth® 2.1 USB Micro Adapter is a Class 2 device with a wireless working distance of up to 30 feet (10 meters). This device allows any computer with USB connections to become a Bluetooth™ enabled computer. It complies with Bluetooth 2.1 and USB 1.1 specifications, and provides users with a 2.1 Mbps data transfer rate at ranges up to 30 feet. It also enables wireless Personal Area Network (PAN) connectivity to Bluetooth™ enabled devices such as PDA's, printers, cellular phones, computers, etc. The Wireless Bluetooth™ to USB adapter is compatible with both PC and Mac. It is easy to install and use, and very portable. Another great solution from IOGEAR® for home and mobile networking needs.

Bluetooth® 2.1 USB Micro Adapter is a class 2 device with a wireless working distance of 30 feet (10 meters).

## Installation-Windows XP

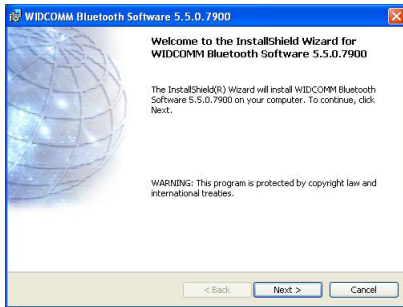
### Windows XP Service Pack 2

The Microsoft Bluetooth stack comes included with Service Pack 2 for Windows XP. If you already have Service Pack 2 installed, you may choose not to install drivers from the installation CD and instead use the Microsoft Bluetooth drivers. For XP without Service Pack 2 installed, please follow below steps to install WIDCOMM Bluetooth Software.

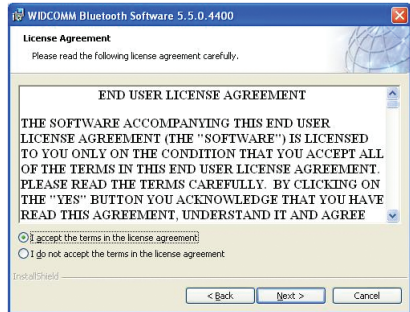
1. Do NOT plugged IOGEAR Bluetooth adapter into the computer before installing the software. Insert the IOGEAR installation CD into your CD-ROM drive. The auto-start feature will bring up the setup installation window to begin the driver installation. Click on OK to start the installation. If the auto-start feature does not bring up the setup installation window, simply browse to your CD drive, double click on the "Setup.exe" and run the setup file. Please follow the on-screen instructions to install the drivers.



2. Click on **Next** to continue



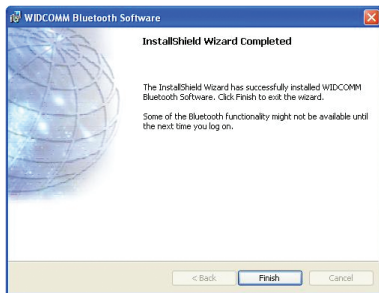
3. Select "I accept the terms in the license agreement" and click **Next** to continue



4. During the install, a “Bluetooth Device not Found” window will appear. **DO NOT** plug in the Bluetooth adapter at this time, simply click **Cancel** to proceed with the driver installation without connecting the Bluetooth device.

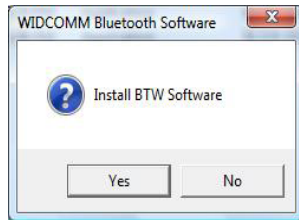
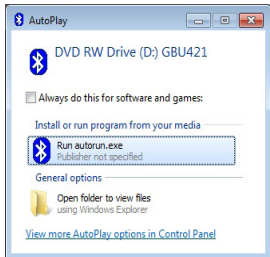


5. Once the driver installation has completed, click **Finish**. You may plug in the Bluetooth Micro Adapter now and it will take up to few minutes for your computer to load all correct drivers. It is recommended to restart your computer after setup is completed.

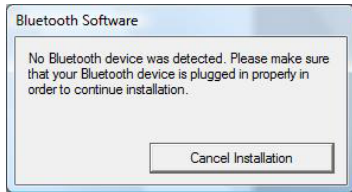


## Installation – Windows Vista / 7

1. Make sure the LOGEAR Bluetooth adapter is NOT plugged into the computer before installing the software. Insert the LOGEAR installation CD into your CD-ROM drive. The auto-start feature will bring up the auto play options for the installation CD. Simply click on Run setup.exe to start the installation.
2. To begin the Widcomm Bluetooth Software installation, simply click on **Yes** to start.



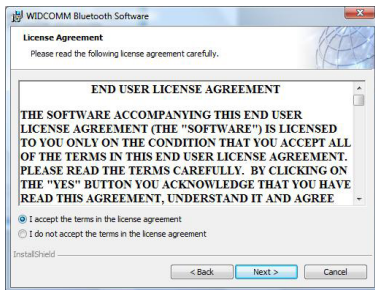
3. Plug in your Bluetooth Micro Adapter to continue with the installation.



4. Click on **Next** to continue.



5. Select **I accept the terms in the license agreement** and click on **Next** to continue.

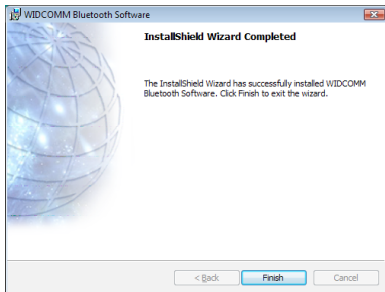


6. Follow through the guidance provided by the installation wizard. When the installation wizard is completed, click on Finish to end the installation.

It is recommended to restart your computer after setup is completed.



7. Click **Finish** to complete the installation



# Initial Bluetooth Configuration Wizard – Windows XP

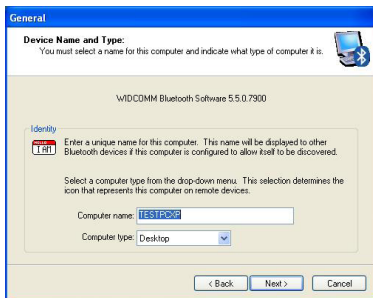
1. Double click on the Bluetooth icon in the system tray. This will start the “Initial Bluetooth Configuration Wizard”.



2. Click **Next** to continue.



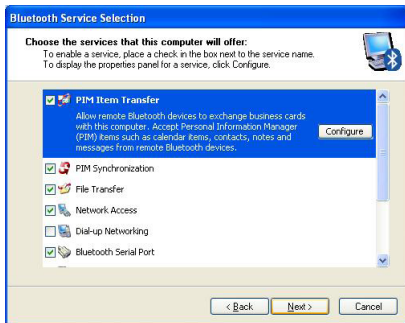
3. Enter a unique name for this computer. This name will be displayed to other Bluetooth devices. Select a computer type from the drop-down menu and click **Next**.



4. Click **Next** to continue.



5. Select the services that you would like your computer to offer to the Bluetooth devices. Click **Next** to proceed.
6. The Bluetooth software will install the selected services. This process may take a while.

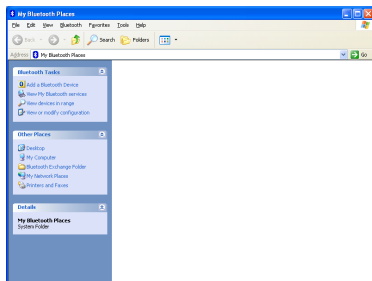


7. If you wish to setup a Bluetooth device now, click **Next** to continue to start the pairing process of your computer and the Bluetooth device. Otherwise, click Skip and click Finish on the final screen to end the Bluetooth wizard.

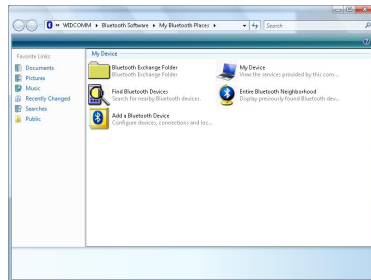


8. After the Bluetooth Configuration Wizard ends, the My Bluetooth Places window will show up.

For Windows XP, the My Bluetooth Places window will show up as this.



For Windows Vista, the My Bluetooth Places window will show up as this

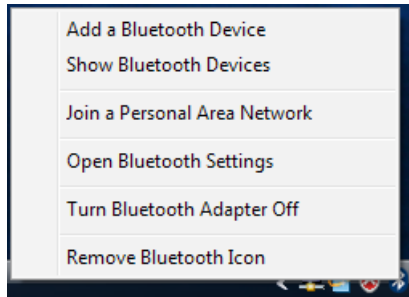


## Initial Bluetooth Configuration Wizard – Windows Vista

1. Right click on the Bluetooth Icon.

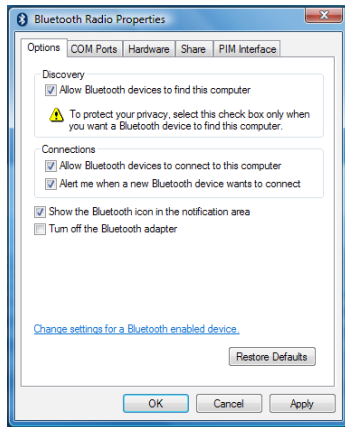


2. Select "Open Bluetooth Settings"



3. Next, check the box labeled “Allow Bluetooth devices to find this computer”.

\*Note: Uncheck the box if you do not want Bluetooth devices to find your computer. Click OK.



# Software Un-installation

## Windows XP Service Pack 2

1. First, unplug the IOGEAR USB Bluetooth® 2.1 USB Micro Adapter from your computer
2. Go to Control Panel (Start > Settings > Control Panel)
3. Click on **Add or Remove Programs**
4. Click on IOGEAR Bluetooth Software and click on **[Remove]**
5. When the uninstall is complete, restart your computer

## Windows Vista / 7

1. First, unplug the IOGEAR Bluetooth® 2.1 USB Micro Adapter from your computer
2. Go to Control Panel (Start > Control Panel)
3. Double click on Programs and Features.
4. Click on Widcomm Bluetooth Software and click on **[Uninstall]**
5. When the uninstall is complete, restart your computer

# Installation - Mac OS X

1. Use of the LOGEAR Bluetooth adapter requires MAC OS X v10.3.9 or later. There is no need to install any additional software, as Apple provides all required Bluetooth drivers
2. Click on the Bluetooth icon and make sure the box next to Discoverable is checked (in 10.3 and 10.4 this will be on the Settings tab). To connect and pair with a Bluetooth device, click on **Set Up New Device**.(in 10.3 and 10.4 this will be on the Devices tab).



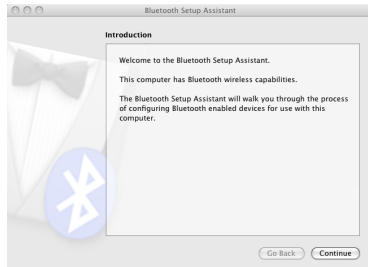
Simply plug in your Bluetooth adapter into an available USB port on your computer, and go to System Preferences.



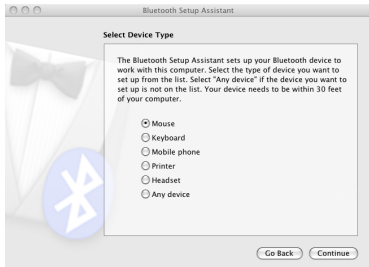
3. If you have already connected a device under 10.5 the Bluetooth window will look like this. Instead of clicking the Set Up New Device button, click the button with a plus (+) symbol below the device list.



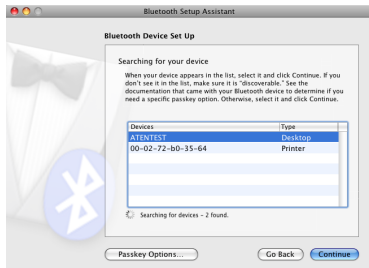
4. This will initiate the Bluetooth Setup Assistant; click **Continue** to proceed.



5. On this window, you can select what type of Bluetooth device you want to setup. Please make your choice below and then click **Continue**.



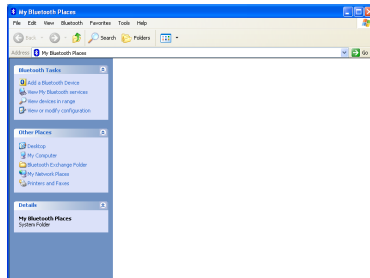
6. Your computer will search for Bluetooth devices in your area and display them in a list. Select the device you wish to communicate with and then click **Continue** to pair/connect to your device.
7. Please refer to the Apple website for further information on Apple Bluetooth support at [www.apple.com](http://www.apple.com).



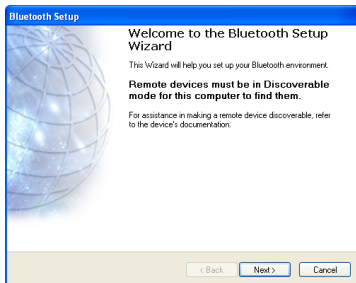
# Connect to Bluetooth Enabled Cellular Phone / PDA

## Windows XP

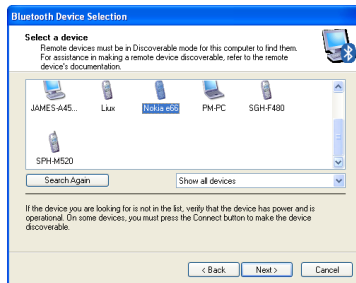
1. Double click on the Bluetooth icon in the system tray.
2. Next, click on **Add a Bluetooth Device** to connect your Bluetooth enabled cellular phone to your computer.



3. Click **Next** to continue.



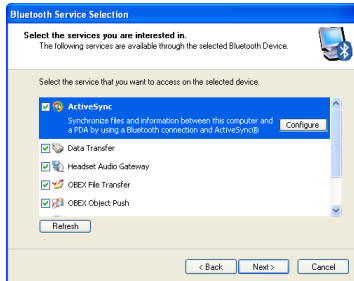
4. The Bluetooth Setup Wizard will search and find available Bluetooth enabled devices around your computer. Select the phone of your choice and click **Next** to continue.



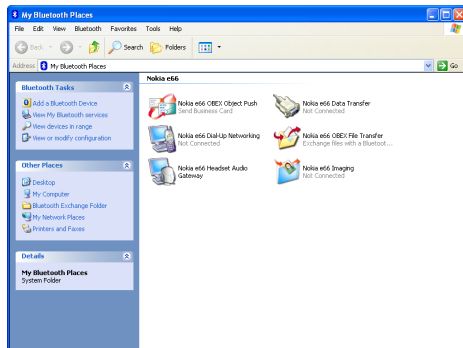
5. You will be prompted with a six digits PIN code on your screen. Enter this PIN code to your Bluetooth enabled cellular phone now.



6. You will be asked to select the services that are available provided on your phone. It is recommended to leave all services checked. Click **Finish** to continue.

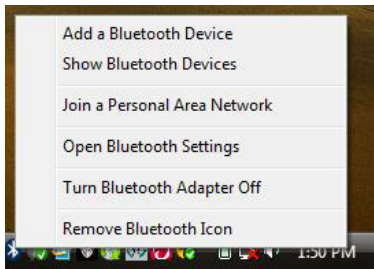


7. You will then see the selected services installing to your computer. After the installation completes, you will see all available services listed in My Bluetooth Places. You can double click on any of these services to activate them or you can also right click on specific service and find out more options provided by the service.

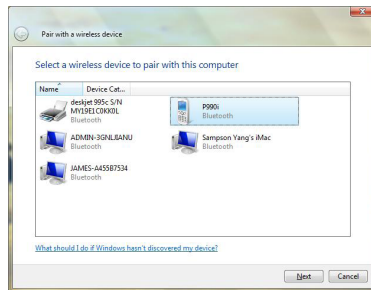


## Windows Vista

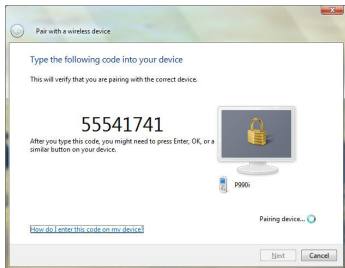
1. Click on the Bluetooth icon in the system tray and select **Add a Bluetooth Device**.



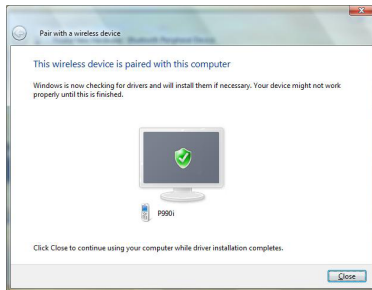
2. Make sure to set your Bluetooth enabled phone on pairing mode and the software will start scanning for all available Bluetooth enabled devices. Once found, your phone will appear in below window. Select your phone and click on **Next** to continue.



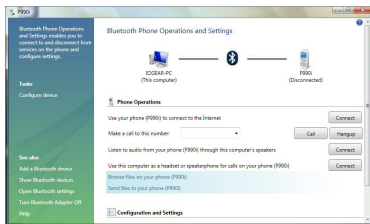
3. The Bluetooth software will generate a pairing key which will display in below window. Type in this pairing key into your Bluetooth enabled phone to accept the pairing request and click on Next to continue. Please make sure to put in the pairing key to your Bluetooth enabled phone within 30 seconds, otherwise, you will need to start this process over again.



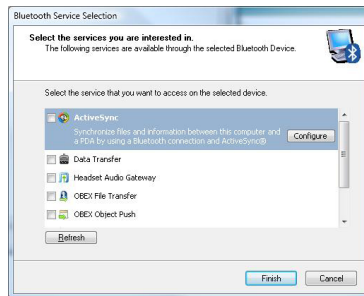
4. Click on **Close** to complete the pairing process.



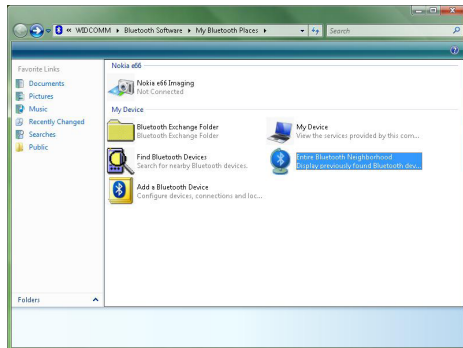
5. Once the pairing process is completed, you can interact with your Bluetooth enabled phone in different ways according to the available choices appearing in the control window.



6. You will be asked to select the services that are available provided on your phone. It is recommended to leave all services checked. Click **Finish** to continue.

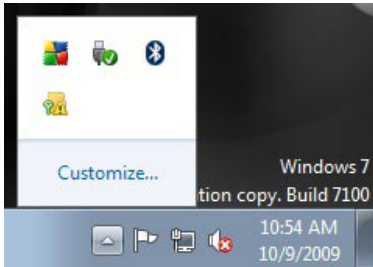


7. You will then see the selected services installing to your computer. After the installation completes, you will see all available services listed in My Bluetooth Places. You can double click on any of these services to activate them or you can also right click on specific service and find out more options provided by the service.

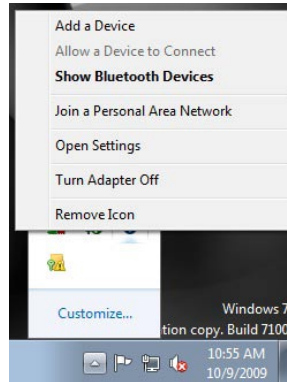


## Windows 7

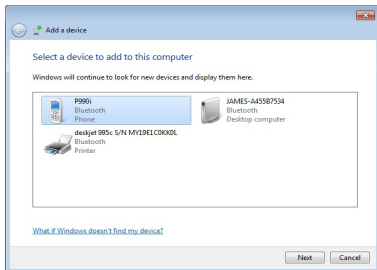
1. Click on the up-arrow icon located in the system tray and click on the Bluetooth icon to begin.



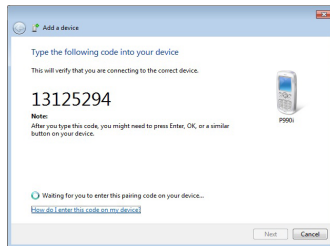
2. Click on **Add a Device** to continue.



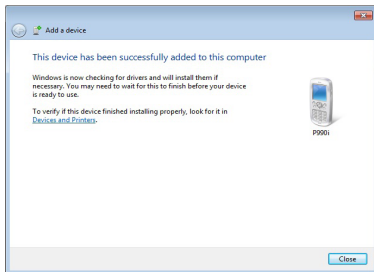
3. Make sure to set your Bluetooth enabled phone on pairing mode and the software will start scanning for all available Bluetooth enabled devices. Once found, your phone will appear in below window. Select your phone and click on **Next** to continue.



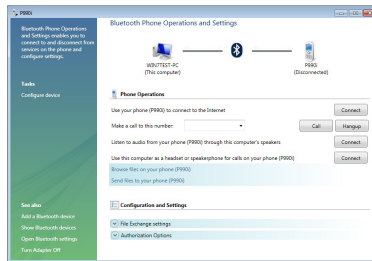
4. The Bluetooth software will generate a pairing key which will display in below window. Type in this pairing key into your Bluetooth enabled phone to accept the pairing request and click on **Next** to continue. Please make sure to put in the pairing key to your Bluetooth enabled phone within 30 seconds, otherwise, you will need to start this process over again.



5. Click on **Close** to complete the pairing process.



6. Once the pairing process is completed, you can interact with your Bluetooth enabled phone in different ways according to the available choices appearing in the control window.



## Connect to a Bluetooth Enabled Printer

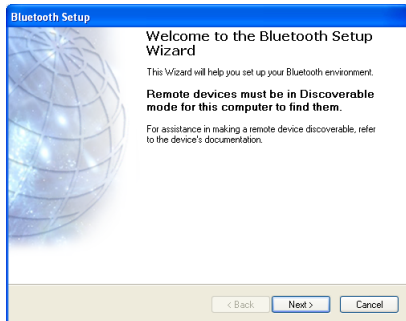
Note: If this is a new printer you are setting up, you will need to install the driver and software of your printer prior to completing the pairing process. Please follow the printer setup wizard to setup your printer.

### Windows XP

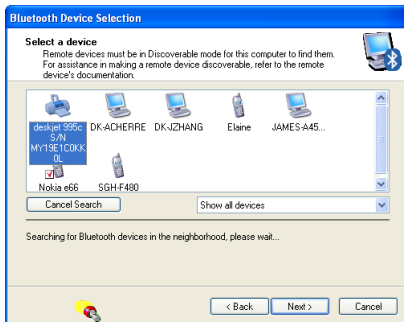
1. Double click on the Bluetooth icon in the system tray.



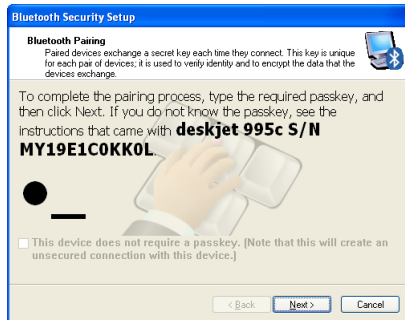
2. Click **Next** to begin pairing with the Bluetooth enabled printer.



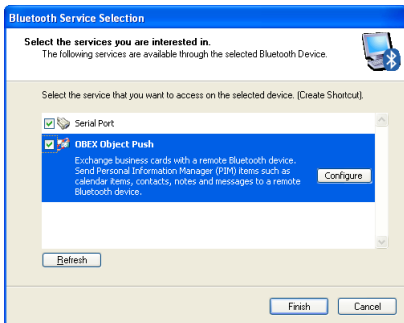
3. The Bluetooth software will search for available Bluetooth devices around your computer. Select the printer and click on **Next** to continue.



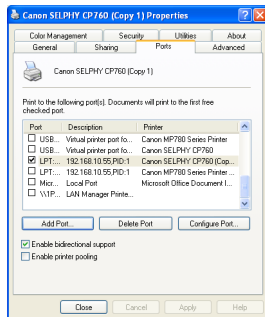
4. Type in the correct Passkey of the printer. Please refer to the original user manual of the device for further details and instructions on entering the Passkey. Press **Next** when done.



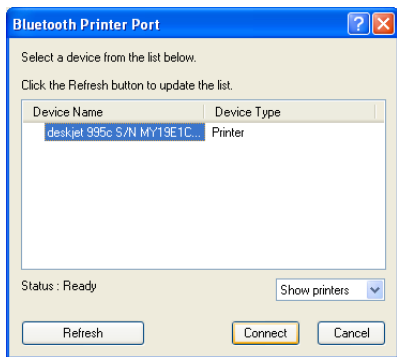
5. Make sure both services are selected and click on **Finish** to complete the pairing process.



6. If your printer is already setup, click on **Start**, then **Settings**, then **Printers and Faxes**. Right click on the printer and select **Properties**. Click on **Ports** tab when you see the properties window. Now, click on **Add Port...** to connect to the printer.



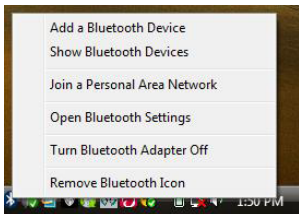
7. Select the printer from the list and click on **Connect** to complete the connection.



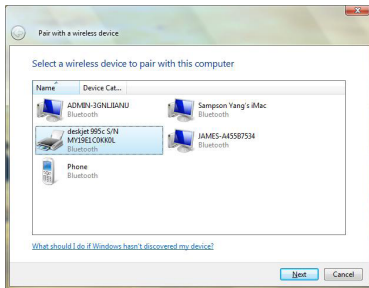
Note: If this is a new printer you are setting up, you will need to install the driver and software of your printer prior to completing the pairing process. Please follow the printer setup wizard to setup your printer.

## Windows Vista

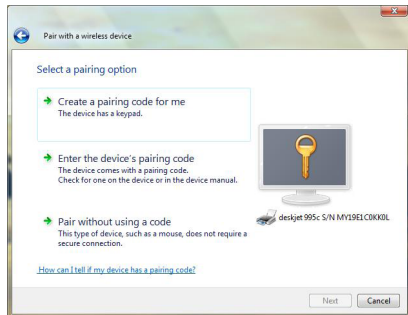
1. Click on the Bluetooth icon in the system tray and select **Add a Bluetooth Device**.



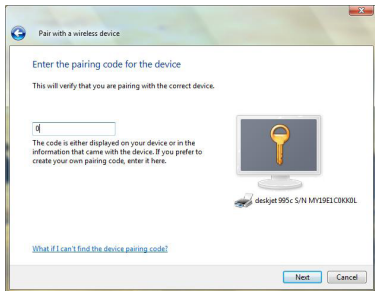
2. Make sure to set your Bluetooth enabled printer on pairing mode and the software will start scanning for all available Bluetooth enabled devices. Once found, your printer will appear in below window. Select your printer and click on **Next** to continue.



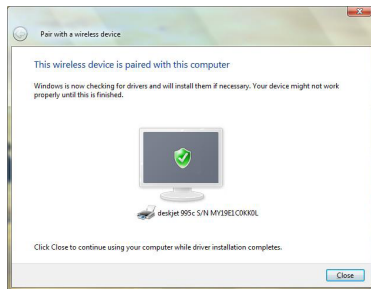
3. Depending on the Bluetooth configuration of your Bluetooth enabled printer, there are three pairing options to choose from. For detail pairing instructions, please consult the original user manual of your Bluetooth enabled printer. In this user manual, we will select **Enter the device's pairing code** and click on **Next** to continue.



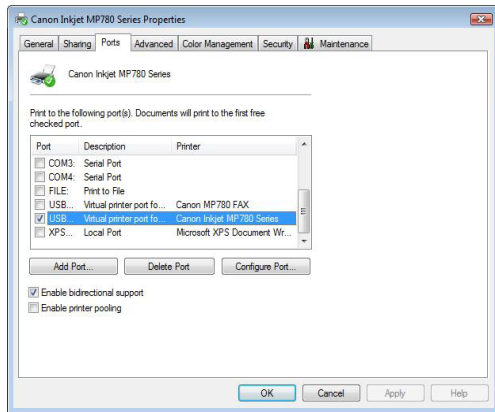
4. Enter the pre-defined pairing code assigned by your Bluetooth enabled printer and click on Next to continue.



5. Click on **Close** to complete the pairing process.



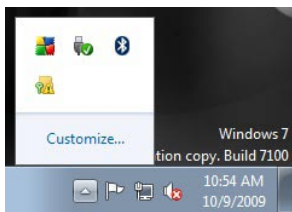
6. If your printer is already setup, click on the Vista logo, then select **Control Panel**. Double click on **Printers** icon and access the list of printer installed on your system. Right click on the printer select **Properties**. Select **Ports** tab and click on **Add Port...** to create the connection to the printer.



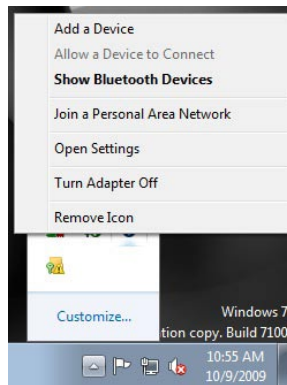
## Windows 7

Note: If this is a new printer you are setting up, you will need to install the driver and software of your printer prior to completing the pairing process. Please follow the printer setup wizard to setup your printer.

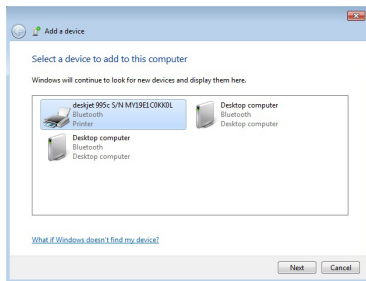
1. Click on the up-arrow icon located in the system tray and click on the Bluetooth icon to begin.



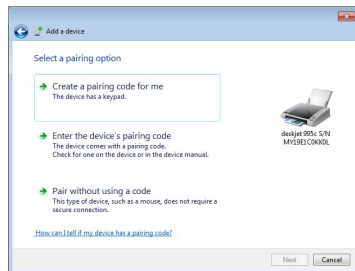
2. Click on **Add a Device** to continue.



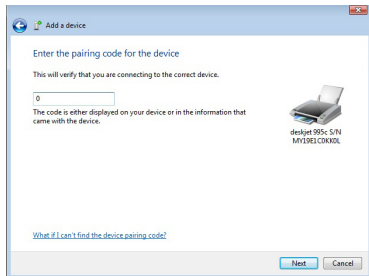
3. Make sure to set your Bluetooth enabled printer on pairing mode and the software will start scanning for all available Bluetooth enabled devices. Once found, your printer will appear in below window. Select your printer and click on **Next** to continue.



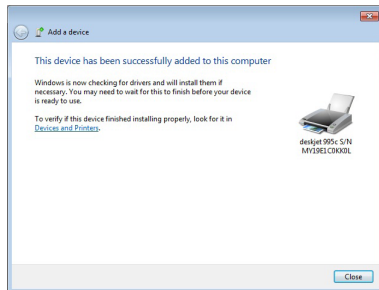
4. Depending on the Bluetooth configuration of your Bluetooth enabled printer, there are three pairing options to choose from. For detail pairing instructions, please consult the original user manual of your Bluetooth enabled printer. In this user manual, we will select **Enter the device's pairing code** and click on **Next** to continue.



5. Enter the pre-defined pairing code assigned by your Bluetooth enabled printer and click on **Next** to continue.



6. Click on **Close** to complete the pairing process



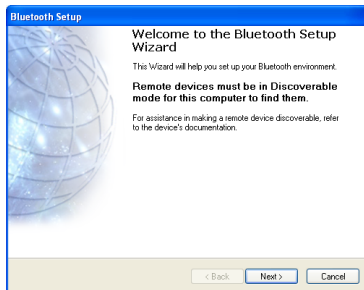
## Connect to Network Access

### Windows XP

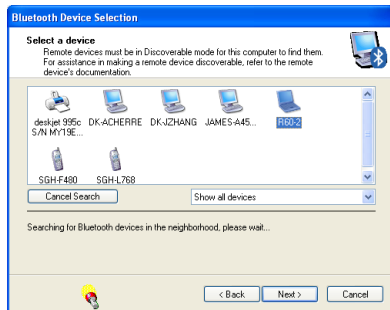
1. Double click on the Bluetooth icon in the system tray.



2. Click **Next** to begin pairing with the Bluetooth device.



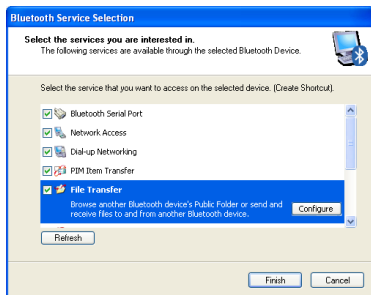
3. Select the device that you want to connect, and click **Next** to continue.



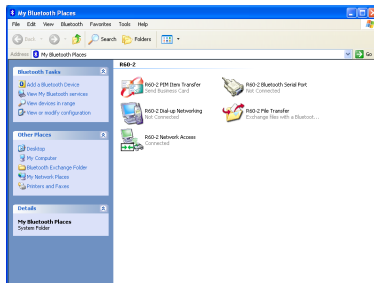
4. Now you should also see the same Passkey shows up in a window on the other Bluetooth device that you are connecting to. Verify both systems have the same Passkey then click **Next** to continue.



5. Check the services that are available on the device and click **Finish** to complete the pairing process.

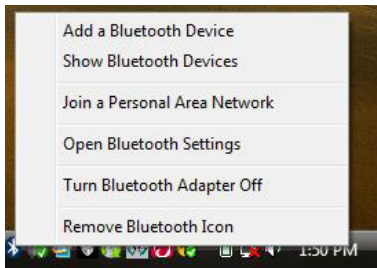


6. Now you can double click on the Network Access icon to start the connection. Once the connection is established, the Network Access icon will turn green indicating that it is now connected.

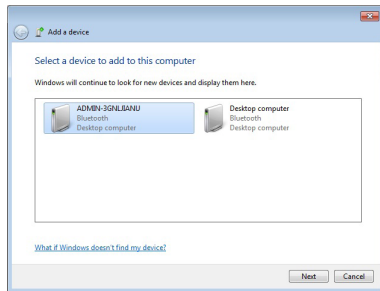


## Windows Vista

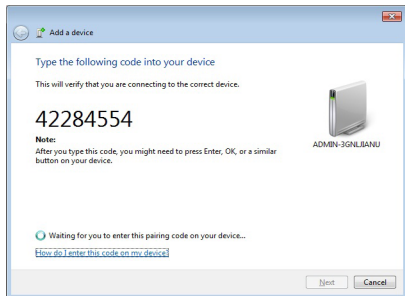
1. Click on the Bluetooth icon in the system tray and select **Add a Bluetooth Device**.



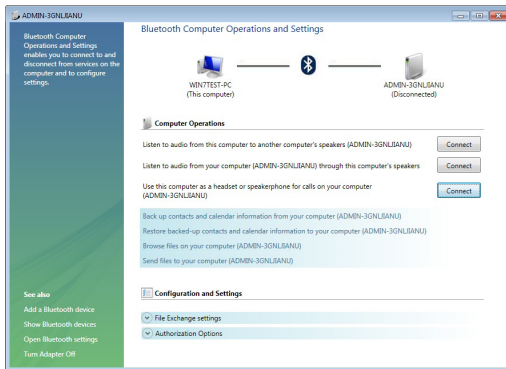
2. The software will start scanning for all available Bluetooth enabled devices. Once found, the other Bluetooth enabled computer will appear in below window. Select the computer and click on **Next** to continue.



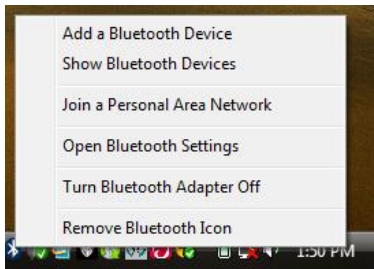
3. The Bluetooth software will generate a pairing key which will display in below window. Type in this pairing key into the other Bluetooth enabled computer to accept the pairing request and click on Next to continue. Please make sure to put in the pairing key to your Bluetooth enabled computer within 30 seconds, otherwise, you will need to start this process over again. The Bluetooth Setup Wizard will search and find available Bluetooth enabled devices around your computer. Select the device of your choice and click **Next** to continue.



4. Once the pairing process is completed, you can interact with your Bluetooth enabled computer in different ways according to the available choices appearing in the control window.



5. Click on the Bluetooth icon located in the system tray and select **Join a Personal Area Network**.

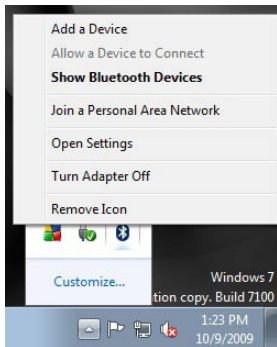


6. Select the Bluetooth device that you want to establish the network connection with, then click on **Connect** to start the connection.

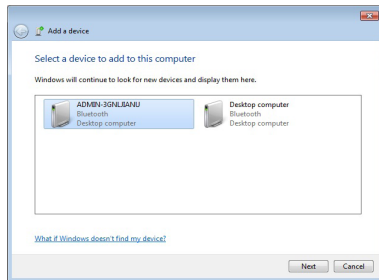


## Windows 7

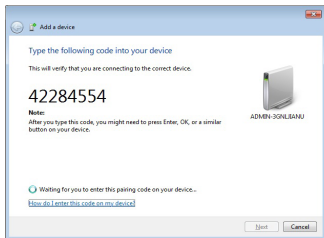
1. Click on the up-arrow icon located in the system tray and click on the Bluetooth icon to begin. Click on **Add a Device** to continue.



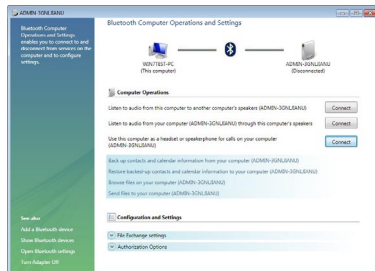
2. The software will start scanning for all available Bluetooth enabled devices. Once found, the other Bluetooth enabled computer will appear in below window. Select the computer and click on **Next** to continue.



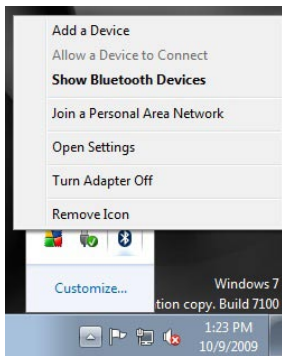
3. The Bluetooth software will generate a pairing key which will display in below window. Type in this pairing key into the other Bluetooth enabled computer to accept the pairing request and click on Next to continue. Please make sure to put in the pairing key to your Bluetooth enabled computer within 30 seconds, otherwise, you will need to start this process over again.



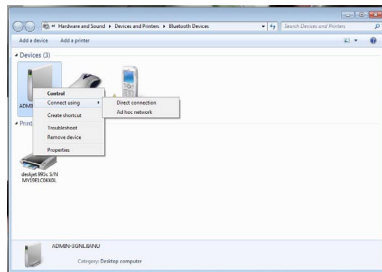
4. Once the pairing process is completed, you can interact with your Bluetooth enabled computer in different ways according to the available choices appearing in the control window.



5. Click on the up-arrow icon located in the system tray and click on the Bluetooth icon to begin. Click on **Join a Personal Area Network** to continue.



6. Right click on the computer that you want to establish the network connection with, select **Connect using** then **Direct connection** to create the connection.



# Pairing

## What is “Pairing?”

Pairing is a Bluetooth function that enables Bluetooth devices to remain permanently linked to another.

## What “Pairing” means in terms of security?

As mentioned, Pairing allows devices to permanently link with each other. The pass key authentication will also be perpetuated in Pairing, meaning that devices will not ask for a **pass key** once they are paired. Paired devices will remain linked, even if other paired devices are turned off. Once a paired device turns back on, it is ready to be used and service requests will not ask for the **pass key** again. The built-in 128 bit security encryption of Bluetooth assures the privacy of your paired devices. Note: If devices are unpaired, it is necessary to enter a **pass key** each time a service request is made from or to another Bluetooth device.

### **Pairing Devices**

In My Bluetooth Places, click on Search devices in range.

Right click on the Bluetooth device and select “Add Bluetooth Device”.

If the Passkey is prompted by the software, then enter the Passkey to your Bluetooth device.

Otherwise, please consult the original user manual of your Bluetooth device for further instructions and details.

The device is now paired with your computer.

### **Unpairing Devices**

In My Bluetooth Places, click on View devices in range.

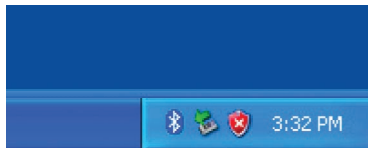
Right click on the Bluetooth device and select “Unpair Device”.

## Installation-Windows XP Service Pack 2 / Windows Vista Service Pack 1

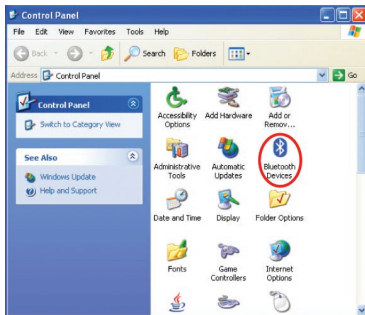
### Windows XP Service Pack-Bluetooth Stack

If you are running Windows XP with Service Pack 2 or Windows Vista with Service Pack 1, you may use the Bluetooth drivers provide by Microsoft. Keep in mind, however, that this Bluetooth stack has limited Bluetooth profiles support. For more information, please visit the Microsoft website at [www.microsoft.com](http://www.microsoft.com).

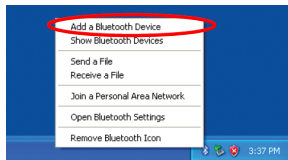
1. To use the Microsoft Bluetooth stack, simply plug in your IOGEAR Bluetooth adapter into an available USB port on your computer. Windows will automatically detect the Bluetooth device and install all necessary drivers.
2. You will then see a Bluetooth icon on your tray bar that allows you to perform all Bluetooth operations, as shown below:



3. Optionally, you can find this in **Control Panel** > **Bluetooth Devices**.



4. To connect with your Bluetooth devices, simply right-click on the Bluetooth icon on the tray bar and select **Add a Bluetooth Device**.



5. Make sure to set your Bluetooth device “discoverable” mode and click Next to continue.



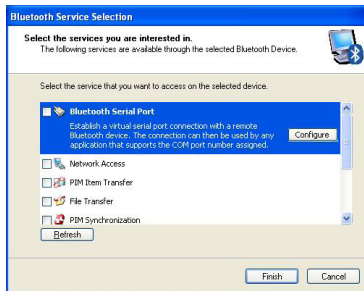
6. Your computer will search for all the Bluetooth devices in your area and list them in the middle pane. Select the desired device, and click Next to continue.



7. Please consult the user manual of your Bluetooth device to see if you need a Passkey to pair/establish a connection. In most cases, you can type in a 4 digits Passkey when you see this screen to pair with your Bluetooth devices.



8. Your Bluetooth device will then connect to the IOGEAR Bluetooth adapter and you can select the services you need. To finish the process, click Finish to complete.



## Specifications

### GBU421

Connectors	USB Type A
Data Rate	2.1 Mbps
Frequency Band	2.402 GHz - 2.4835GHz Unlicensed ISM band
Humidity	10% - 90% non-condensing
Interface	USB
Modulation	GFSK (Gaussian Frequency Shift Keying)
Operating Temperature	0°C - 50°C
Security	Pairing, Encryption, Authentication
Sensitivity	Minimum - 76dB
Transmission Power	4dBm max with power control (Class 2)
Weight	0.4 oz.

## Technical Support

If you need technical support, please check out our IOGEAR Tech Info Library (T.I.L.) at [www.iogear.com/support](http://www.iogear.com/support) for the latest tips, tricks, and troubleshooting. The IOGEAR T.I.L. was designed to provide you with the latest technical information about our products. Most of the answers to your questions can be found here, so please try it out before contacting technical support.

Technical support is available Monday through Friday from 8:00 am to 5:00 pm PST and can be reached at (949) 453-8782 and (866) 946-4327 or by email [support@iogear.com](mailto:support@iogear.com).

## Federal Communications Commission (FCC) Statement

### 15.21

You are cautioned that changes or modifications not expressly approved by the part responsible for compliance could void the user's authority to operate the equipment.

### 15.105(b)

This equipment has been tested and found to comply with the limits for a Class B digital device, pursuant to part 15 of the FCC rules. These limits are designed to provide reasonable protection against harmful interference in a residential installation. This equipment generates, uses and can radiate radio frequency energy and, if not installed and used in accordance with the instructions, may cause harmful interference to radio communications. However, there is no guarantee that interference will not occur in a particular installation. If this equipment does cause harmful interference to radio or television reception, which can be determined by turning the equipment off and on, the user is encouraged to try to correct the interference by one or more of the following measures:

- Reorient or relocate the receiving antenna.
- Increase the separation between the equipment and receiver.
- Connect the equipment into an outlet on a circuit different from that to which the receiver is connected.
- Consult the dealer or an experienced radio/TV technician for help.



**Operation is subject to the following two conditions:**

1. this device may not cause interference and
2. this device must accept any interference, including interference that may cause undesired operation of the device.

**FCC RF Radiation Exposure Statement:**

This equipment complies with FCC radiation exposure limits set forth for an uncontrolled environment. End users must follow the specific operating instructions for satisfying RF exposure compliance. This transmitter must not be co-located or operating in conjunction with any other antenna or transmitter.

## CE Statement

This device has been tested and found to comply with the requirements set up in the council directive on the approximation of the law of member states relating to EMC Directive 89/336/EEC, Low Voltage Directive 73/23/EEC and R&TTE Directive 99/5/EC.

## Limited Warranty

IN NO EVENT SHALL THE DIRECT VENDOR'S LIABILITY FOR DIRECT, INDIRECT, SPECIAL, INCIDENTAL OR CONSEQUENTIAL DAMAGES RESULTING FROM THE USE OF THE PRODUCT, DISK OR ITS DOCUMENTATION EXCEED THE PRICE PAID FOR THE PRODUCT.

The direct vendor makes no warranty or representation, expressed, implied, or statutory with respect to the contents or use of this documentation, and especially disclaims its quality, performance, merchantability, or fitness for any particular purpose.

The direct vendor also reserves the right to revise or update the device or documentation without obligation to notify any individual or entity of such revisions, or updates. For further inquiries please contact your direct vendor.

## Contact

### **IOGEAR**

19641 DaVinci  
Foothill Ranch, CA 92610

**P** 949.453.8782

**F** 949.453.8785

Visit us at: **[www.iogear.com](http://www.iogear.com)**

© 2011 IOGEAR®. All Rights reserved. Part No. M1204-a

IOGEAR and the IOGEAR logo are trademarks or registered trademarks of IOGEAR, Inc. Microsoft and Windows are registered trademarks of Microsoft Corporation. IBM is a registered trademark of International Business Machines, Inc. IOGEAR makes no warranty of any kind with regards to the information presented in this document. All information furnished here is for informational purposes only and is subject to change without notice. IOGEAR assumes no responsibility for any inaccuracies or errors that may appear in this document.





## About Us

### FUN

IOGEAR offers connectivity solutions that are innovative, fun, and stylish, helping people enjoy daily life using our high technology products.

### GREEN

IOGEAR is an environmentally conscious company that emphasizes the importance of conserving natural resources. The use of our technology solutions helps reduce electronic waste.