



Quick Start Guide

2-Port USB 3.0 PCI Express Card

GIC320U
PART NO. Q1136

Package Contents

- 1 x USB 3.0 PCI Express Card
- 1 x Quick Start Guide
- 1 x Installation CD
- 1 x Warranty / Registration Card

System Requirements

- Windows XP, Windows Vista, Windows 7
- Available PCI Express Card Slot

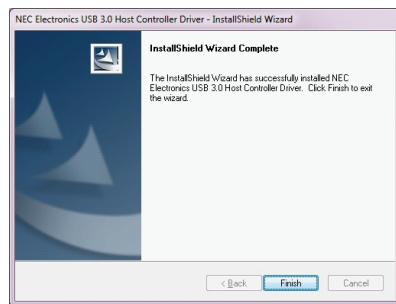
Software Installation

Start Here!

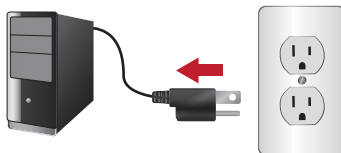
1. Insert the CD-ROM, double-click Setup.exe to start the software installation.



2. Follow the onscreen instructions to install the driver software.



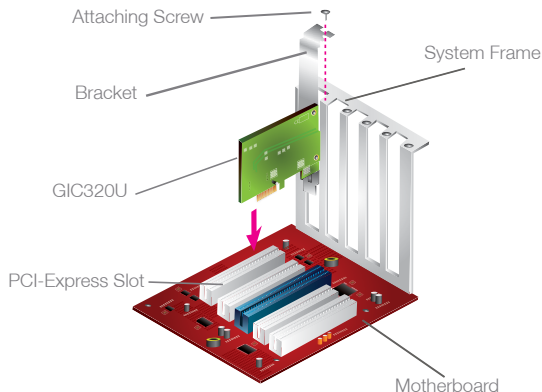
3. When finished, shut down your computer and unplug the AC power source.



Hardware Installation

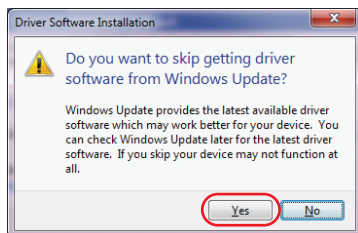
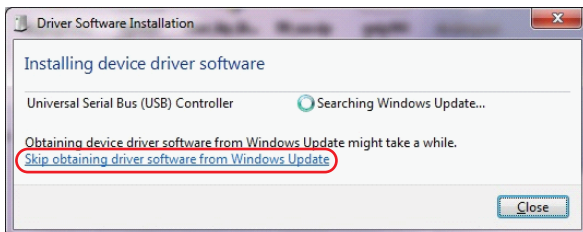
1. Open your computer case, touch any metal part of the case to ground yourself. Insert the GIC320U into an available PCI Express Card™ slot (refer to your computer's manual for more instructions). You may use the included Low-Profile bracket for a system with a low-profile chassis.

Note: Depends on your computer's power supply design, you may choose to connect the power connector on GIC320U with the power cable from the power supply.



2. Plug in and turn on your computer. When Windows starts, it should load the driver you just installed automatically.

3. If your Windows system tries to obtain the driver from Windows Update, please click **"Skip obtaining driver software from Windows Update"**.



Connect to USB Devices

When the dialog box indicates that the installation has finished, your computer is now ready for USB 3.0 SuperSpeed devices. This card also supports USB 2.0 or USB 1.1 devices.

Federal Communications Commission (FCC) Statement

This product has been tested and found to comply with the limits for a Class B device, pursuant to part 15 of the FCC Rules. It is intended for use in residential setting, but may also be used in commercial or industrial setting.

CE Compliance

This device has been tested and found to comply with the following European Union directives: Electromagnetic Capability (89/336/EMC), Low Voltage (73/23/EEC) and R&TTED (1999/5/EC).

Warranty

WE'RE HERE TO HELP YOU!
NEED ASSISTANCE SETTING UP THIS PRODUCT?

Make sure you:

1. Use the live chat at www.iogear.com to try and solve any issues you may be having with the product
2. Visit the Tech Info Library/FAQ on www.iogear.com (under the Support tab)
3. Call the tech support line at 1(866) 946-4327 (U.S. only) or (949) 453-8782

Warranty Information

This product carries a 3 Year Limited Warranty. For the terms and conditions of this warranty, please go to <http://www.iogear.com/support/warranty> or call 1-866-946-4327

Register online at <http://www.iogear.com/register>

Important Product Information

Product Model _____

Serial Number _____

Contact

Toll Free 866-946-4327 (USA)

Phone: 949-453-8782

19641 Da Vinci

Foothill Ranch, CA 92610

www.iogear.com

support@iogear.com



About Us



FUN

IOGEAR offers connectivity solutions that are innovative, fun, and stylish, helping people enjoy daily life using our high technology products.



GREEN

IOGEAR is an environmentally conscious company that emphasizes the importance of conserving natural resources. The use of our technology solutions helps reduce electronic waste.