



Installation Guide

4-Port USB Sharing Hub

GUIP204
Part No. M1057-a



Table of Contents

Package Contents	4	Server Configuration - Password Change	27
System Requirements	5	Advanced Features - Automatic Printer Switch	28
Product Overview	6	Advanced Features - Device Auto Connect	29
Hardware Installation	7	Advanced Features - Auto Disconnect	31
Software Installation	10	Advanced Features - Program Shortcut	32
Firewall Setting	12	Advanced Features - Program Auto Launch	36
Network Device Overview	14	Advanced Features - Startup Settings	37
Status of USB Device	15	Advanced Features - Request Disconnect	38
Access a USB device	18	Limited Warranty	39
Server Configurations	20	Federal Communications Commission (FCC) Statement	40
Server Configuration - Network	23	CE Statement	41
Server Configuration - Firmware Update	24	Contact	42
Server Configuration - Reset Device	25		
Server Configuration - Factory Default	26		

Package Contents

- 1 x 4-Port USB Sharing Hub (also referred to as “server” or “Net ShareStation” in this document)
- 1 x RJ45 Ethernet Cable
- 1 x Software CD
- 1 x Power Adapter
- 1 x Quick Start Guide
- 1 x Warranty / Registration card

System Requirements

Computer:

- CPU of 1.7GHz and above
- Minimum 512MB RAM
- Windows XP, Windows Vista, Windows 7
- Available Ethernet port in home/office network

Supported Devices:

- Printer or Multi-function printer with USB connection*
- External USB hard drive
- USB speaker*
- USB webcam*
- USB flash drive
- USB memory card reader
- USB scanner

*Note: Some USB devices may require a direct connection for optimum performance.

Product Overview

1. USB connection LED (Port 4, Port 3, Port 2, Port 1)
2. USB port (Port 1)
3. Power Adapter Port
4. Network Port
5. Reset Button
6. USB ports (Port 2, Port 3, Port 4)



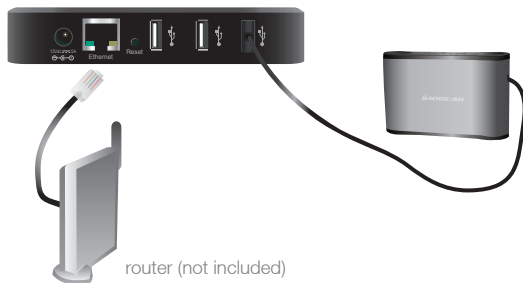
Hardware Installation

NOTE: Before you connect your USB device to the network, please refer to the device's user manual and install the device's driver and required software under the USB connection first. When the installation is completed, safely remove your USB devices from the system. Disconnect the power source from USB devices and GUIP204 USB Sharing Hub.

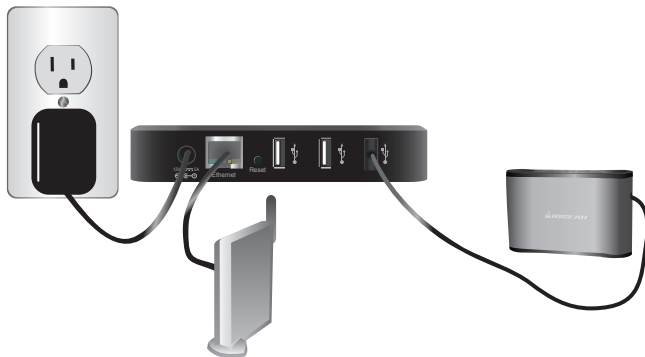
1. Connect your USB device to any one of the USB ports of the USB Sharing Hub.



2. Connect the USB Sharing Hub to the router or switch with the included Ethernet cable.



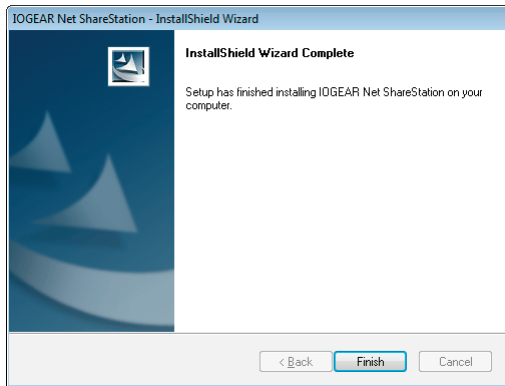
3. Connect the power adapter to the USB Sharing Hub. Turn on your USB device. The USB connection LED will turn on indicating that unit is correctly connected to the network.



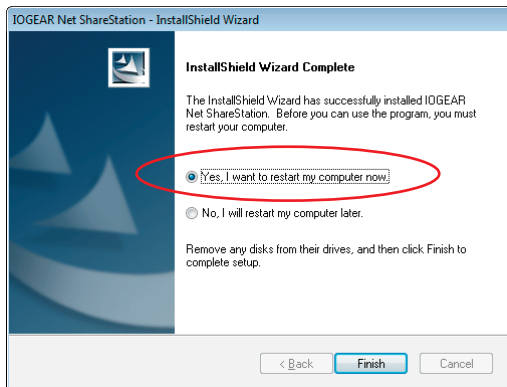
Software Installation

Please insert the driver CD into your PC. The CD should auto play and bring up the software installer.

If you have disabled the auto-play function, please browse the CD and install the driver program manually. Follow the instructions of the wizard to complete the installation process.

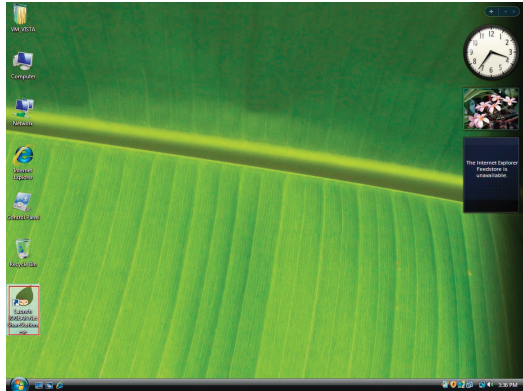


PLEASE RESTART THE SYSTEM
AS REQUESTED BY THE IN-
STALLER WHEN THE INSTALLA-
TION COMPLETES, OTHERWISE
THE SOFTWARE MIGHT NOT
WORK PROPERLY.



Firewall Setting

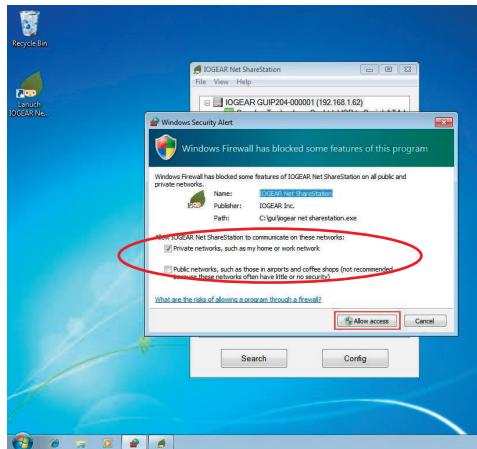
The software application should automatically launch after your computer restarts. If not, please double click the shortcut icon on the Desktop.



If your Windows system or firewall program blocks the program, **PLEASE “UNBLOCK” or “ALLOW ACCESS” for both Private and Public networks.**

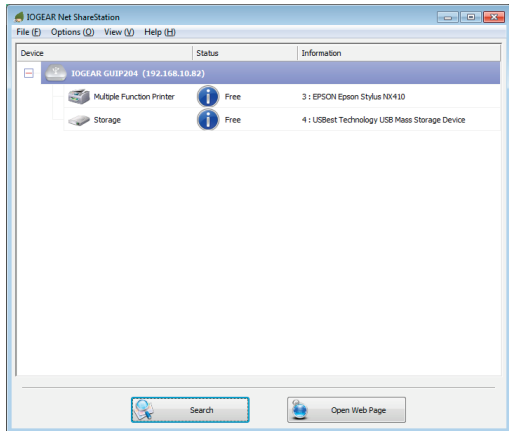
After you have done this once, the system will remember your setting and not ask you again.

Certain anti-virus or Internet security programs have firewall functions that might prevent this program from accessing the network. Please make sure that you unblock this application from these programs as well.



Network Device Overview

The main dialog box consists of a Control Menu (File, Options, View and Help) & a tree view in the middle that displays a list of all the server and devices discovered on the network. An inaccessible USB device may not show on the list. It is either disconnected from the network, powered off or having technical issues.

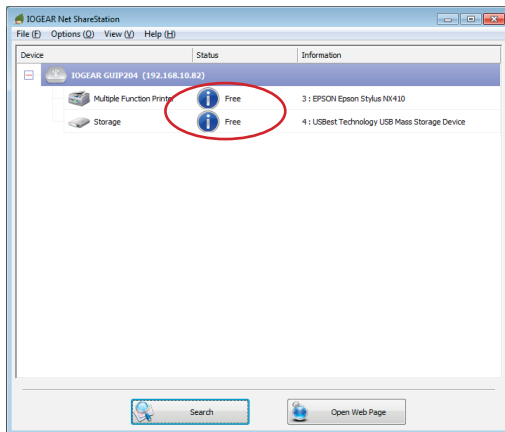


Status of USB Device

The device might be in one of the following states and there are different things you can do with it in each of the states. Each status is represented by a specific icon.

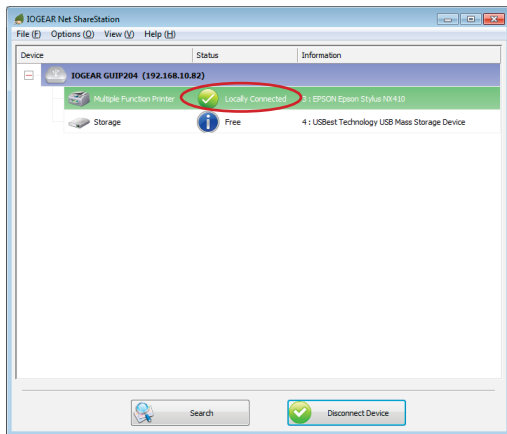
Device Free

A device with Device Free status is unoccupied and ready to be connected.



Occupied by You

When you are **Connected** to a device, the Blue icon turns into an Green icon to show that the device is locally connected.



Occupied by Other User



This status icon indicates that the device is occupied by another user on your network and you can not connect to that device at the moment.

To request other users to release a USB device, please see instructions under “Request Disconnect” on P.38.

Device on Different Segment



This icon with question mark indicates that the server's IP address is on a different network segment from your PC. You can NOT connect to a device attached to such server. Please check your network settings.

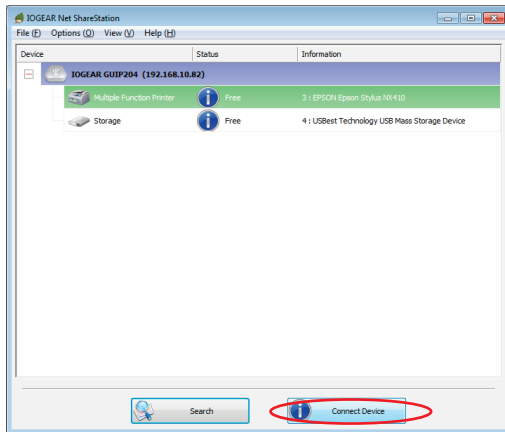


Some of the devices are not supported by the USB hub. Such device will be identified by a stop sign icon as shown.

Access a USB device

To connect to a USB device, please select it on the tree view and click on Connect Device button or double-click on it.

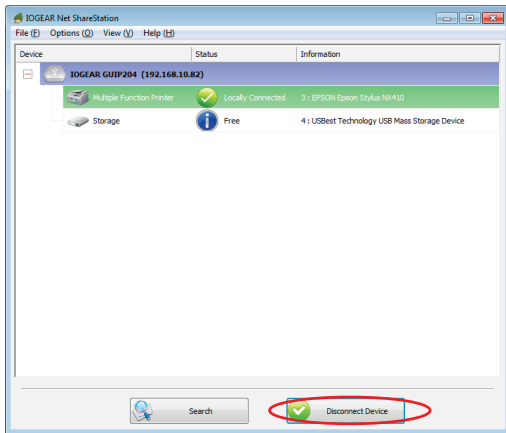
This process might take a few seconds or up to a minute, depending on the complexity of the device. Then you can operate a connected USB device as if it is connected to your computer's USB port directly.



To disconnect the USB device, select the device and **Disconnect Device**.

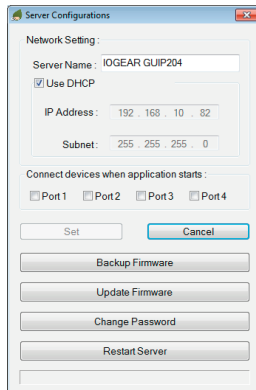
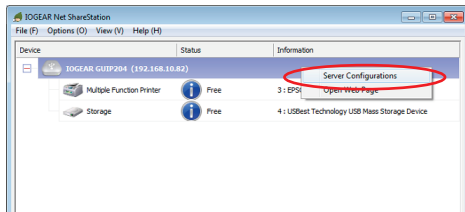
Clicking on this button releases the selected device for other users. Once you see the icon turns back, the device has been disconnected and other users will then be able to connect to it.

This function is the same as unplugging a USB device from your PC's USB port.



Server Configurations

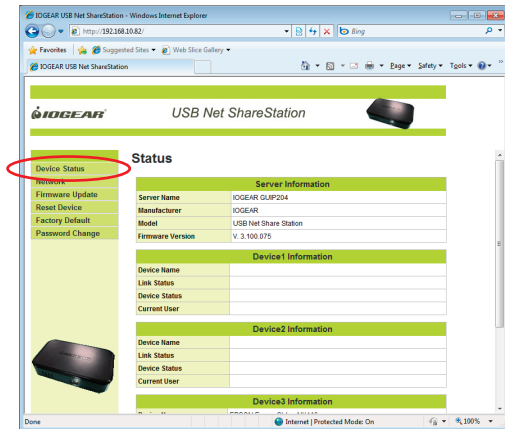
Users can configure the server settings using two different methods. Select the USB server on the tree view and right-click on the icon to bring up the “**Server Configurations**”.



Or click on the **“Open Web Page”** button on the bottom.



The main page of the configuration tool shows the status of the USB Server and the device(s) connected to it. Click on **"Device Status"** from the Left menu will bring you back to this page.



Server Configuration - Network

Network

This page displays the current network setting. If you need to assign the server a static IP, please Disable the DHCP option as well. Once you are done, please click on the "Submit" button and reboot the server.

NOTE: A Server with busy device(s) connected is prohibited to be configured to prevent interruption of any on-going tasks.

IOGEAR USB Net ShareStation - Windows Internet Explorer

http://192.168.10.82/

IOGEAR USB Net ShareStation

IOGEAR USB Net ShareStation

Network

Network Status

IP Setting	Automatic (DHCP)
IP Address	192.168.10.82
Subnet Mask	255.255.255.0
MAC Address	00:21:79:16:03:cb

Network Setting

DHCP Setting	Enable
IP Address	192 . 168 . 10 . 82
Subnet Mask	255 . 255 . 255 . 0
Server Name	IOGEAR GUIP204
Password	<small>*Must provide if Available*</small>

Submit Clear



Server Configuration - Firmware Update

Firmware Update

Please check IOGEAR Website to see if any new firmware is available before you proceed.
<http://www.iogear.com/support/dm/driver/GUIP204#display>

If a new firmware is available, download the firmware to your computer. Click on the “Browse” button to select the firmware you have downloaded. Then click on the “Submit” button to update the firmware. Leave the password field blank if no password was previously set by the user.

Note: Keeping the firmware current is highly recommended. Updating the software & firmware will usually give you improved performance and often extra functionality.

 USB Net ShareStation

Device Status

Network

Firmware Update

Reset Device

Factory Default

Password Change

Firmware Update

Firmware Update

Password: *Must provide If Available*

Firmware:

Server Configuration - Reset Device

Reset Device

Click on “**Reset Device**” to reboot the server. By default, there is no password set for the server therefore you do not have to enter anything for the reset function to work. However, if you created a password under the “Password Change” page before, you must enter it for this function to work.

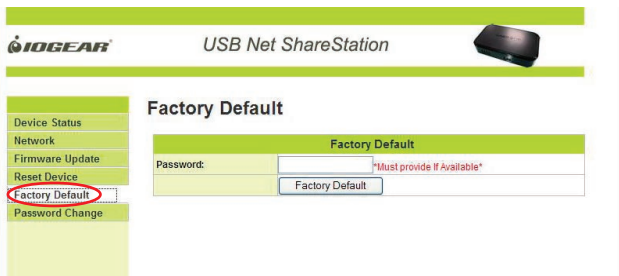


The screenshot displays the IODGEAR USB Net ShareStation configuration web interface. The top header features the IODGEAR logo, the product name "USB Net ShareStation", and a small image of the device. On the left, a vertical menu lists several options: "Device Status", "Network", "Firmware Update", "Reset Device" (which is circled in red), "Factory Default", and "Password Change". The main content area is titled "Reset Device" and contains a sub-section with the same title. This sub-section includes a "Password:" label, a text input field, and a red asterisk note stating "*Must provide if Available*". Below the input field is a "Reset Device" button.

Server Configuration - Factory Default

Factory Default

Click on “**Factory Default**” to restore the server’s settings back to the factory default. Again, the password is not necessary if no password was set by the user. Just leave the field blank and click on the “Factory Default” button to restore the default settings





The screenshot displays the web interface for an IOGEAR USB Net ShareStation. The header features the IOGEAR logo, the product name "USB Net ShareStation", and a small image of the device. On the left, a vertical menu lists several options: "Device Status", "Network", "Firmware Update", "Reset Device", "Factory Default" (which is circled in red), and "Password Change". The main content area is titled "Factory Default" and contains a form with a "Password:" label, a text input field with a red asterisk and the text "*Must provide If Available*", and a "Factory Default" button.

Factory Default	
Password:	<input type="text"/> *Must provide If Available*
<input type="button" value="Factory Default"/>	

Server Configuration - Password Change

Password Change

To change the password, you must enter the current password, input new password, re-input new password for confirmation, then click on "Submit". If you are setting the password for the first time, you don't have to provide the current password, simply leave the field blank.

USB Net ShareStation

Device Status

Network

Firmware Update

Reset Device

Factory Default

Password Change

Password Change

Current Password:

New Password:

Confirm New Password:

Must provide If Available

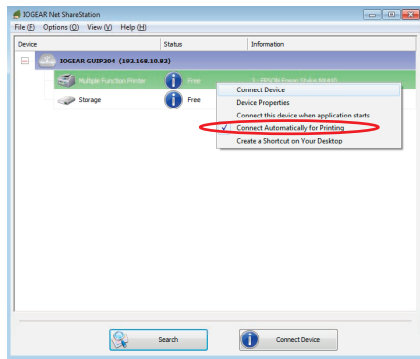
Advanced Features - Automatic Printer Switch

Automatic Printer Switch

When you send a print job to a specific printer, the server detects the task and AUTOMATICALLY connects to this printer to print out the document. When the printing task is done, the printer disconnects AUTOMATICALLY and allows the printer to be available to other users.

Simply select the printer that you plan to switch, right-click and set **"Connect Automatically for Printing"**, the printer will automatically be connected when you print.

NOTE: Before you connect your printer or USB device to the network, please refer to the device's user manual and install the device's driver and required software under the USB connection first.



Advanced Features - Device Auto Connect

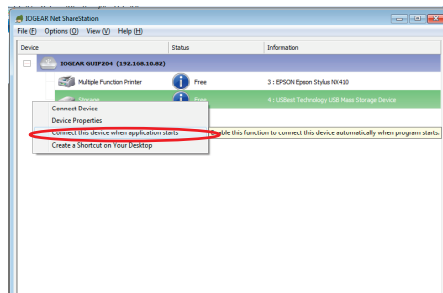
There are two ways to automatically connect USB devices: automatic connection by device or automatic connection by USB port.

Automatic Connection by Device

Select the device, right-click and check "Connect this device when application starts".

Once enabled, the particular USB device will be connected automatically when:

1. The USB server software starts up and the device is powered-on and Free
2. The USB server software is already running and you turn on the device
3. The USB server software is already running and the device status changes to Free



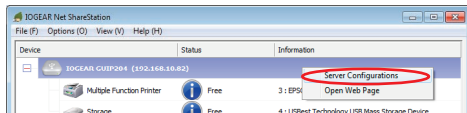
However, if the user manually disconnects the device later, it will NOT be automatically connected again until the software has been restarted.

Automatic Connection by USB Port

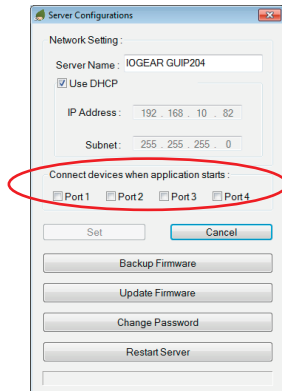
Select the USB server on the tree view and right-click on the icon to bring up the Server Configurations.

When this function is enabled for a specific port, the USB device will be connected automatically when:

1. The USB server software starts up and the device is already plugged into the port
2. The USB server software is already running and you plug in the device
3. The USB server software is already running and the device status changes to Free



However, if the user manually disconnects the device later, it will NOT be automatically connected again until the software has been restarted.

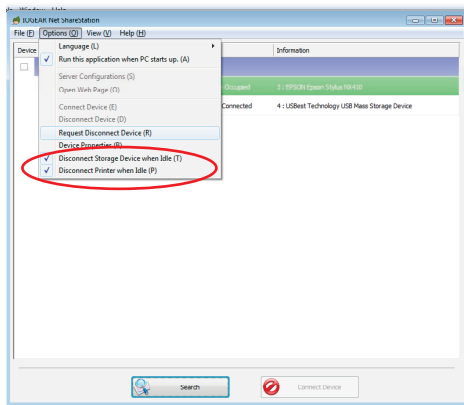


Advanced Features - Auto Disconnect

Auto Disconnect

This feature automatically disconnects a printer or an external hard drive when a user is done with the device or the device has been idle for 60 seconds. The device will then be available to other users.

NOTE: This function may not work with some mass storage devices such as flash drives. These devices tend to periodically (on a milli-second base) communicate with the computer even when the user is not accessing the drive. Since it never actually stays “Idle” therefore will never be disconnected by this function. External USB hard drives do not exhibit this characteristic.



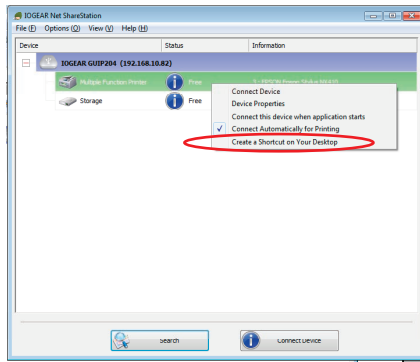
Advanced Features - Program Shortcut

Software Program Shortcut

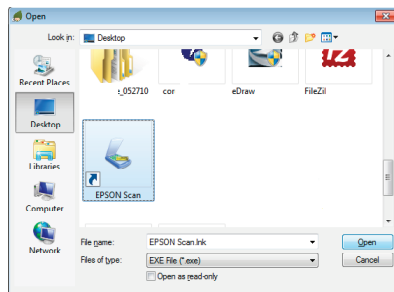
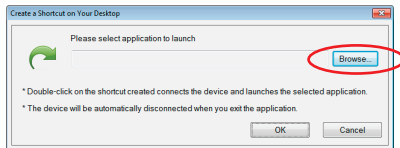
This function creates a shortcut to start up a software application and connect your computer to a specific USB device at the same time. For example, if you need to use a scanner, the shortcut will launch the scanner utility software and connect that scanner or multi-function printer simultaneously.

Here we use a multi-function printer's scanning application as an example:

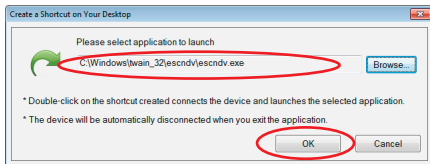
1. Select the scanner / printer, right-click, then check **"Create a Shortcut on Your Desktop"** option.



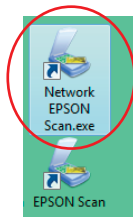
2. A wizard will guide you through the process. Refer to your device's user manual, select the specific scanning application that comes with your scanner. Normally you'll find the software shortcut on your Desktop. Browse and select the application.



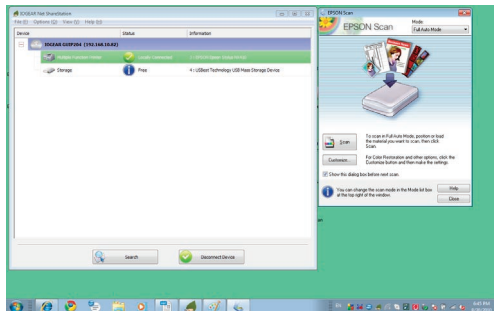
3. Make sure that the program path has been correctly captured and then click on the OK button.



4. A new shortcut has been created on your Desktop with a "Network" prefix to the name of the original shortcut.



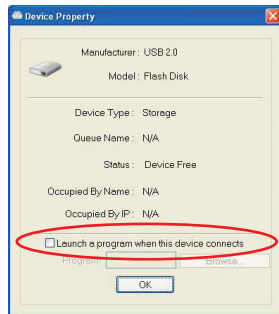
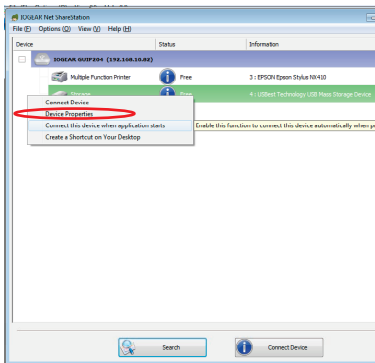
5. When you double click the new shortcut, the computer will launch the software and connect to the MFP / scanner at the same time. Now you can operate your device and keep the USB Server software minimized in the system tray. When you are finished, simply close the utility software and the device will be disconnected automatically to allow other users to use.



Advanced Features - Program Auto Launch

Device Property

You can check the device status or set an automatically launched program from the **"Device Properties"**.

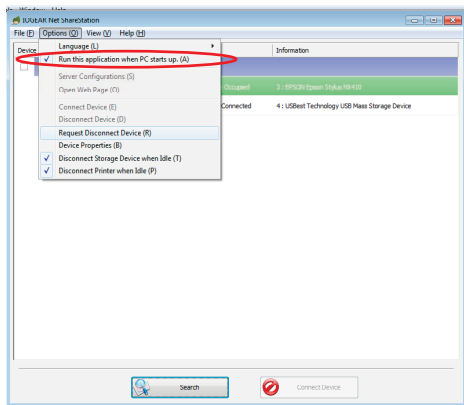


If the USB device you connect requires a specific software application, such as a scanning utility program, you can check **"Launch a program when this device connects"** and provide the path to that application program. The software will automatically launch after you connect the device.

Advanced Features - Startup Settings

Server Settings

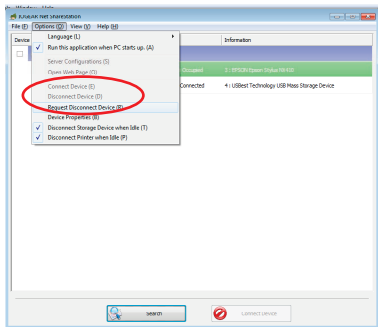
By default, the server application software automatically launches when you start up your computer. If you prefer not to run this program automatically, you can uncheck **“Run this application when PC starts up”** under **“Options”**.



Advanced Features - Request Disconnect

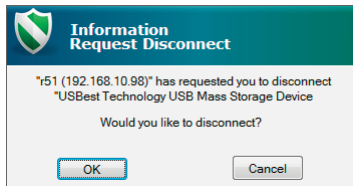
Connect Device or Disconnect Device:

Select a specific USB device, then connect or disconnect the device under the top menu "Options".



Request Disconnect Device:

If a device is occupied by another user, you can select that device and use this function to send a message to that user. The user can either release the device or deny the request if s/he is still using the device.



Limited Warranty

IN NO EVENT SHALL THE DIRECT VENDOR'S LIABILITY FOR DIRECT, INDIRECT, SPECIAL, INCIDENTAL OR CONSEQUENTIAL DAMAGES RESULTING FROM THE USE OF THE PRODUCT, DISK, OR ITS DOCUMENTATION EXCEED THE PRICE PAID FOR THE PRODUCT.

The direct vendor makes no warranty or representation, expressed, implied, or statutory with respect to the contents or use of this documentation, and especially disclaims its quality, performance, merchantability, or fitness for any particular purpose. The direct vendor also reserves the right to revise or update the device or documentation without obligation to notify any individual or entity of such revisions, or updates. For further inquiries please contact IOGEAR.

Federal Communications Commission (FCC) Statement

This equipment has been tested and found to comply with the limits for a Class B digital device, pursuant to Part 15 of the FCC Rules. These limits are designed to provide reasonable protection against harmful interference in a residential setting. This product generates, uses, and can radiate radio frequency energy and, if not installed and used as directed, it may cause harmful interference to radio communications. Although this product complies with the limits for a Class B digital device, there is no guarantee that interference will not occur in a particular installation.

CE Statement

This device has been tested and found to comply with the requirements set up in the council directive on the approximation of the law of member states relating to EMC Directive 89/336/EEC, Low Voltage Directive 73/23/EEC and R&TTE Directive 99/5/EC.

Contact

IOGEAR

19641 Da Vinci

Foothill Ranch, CA 92610

P 949.453.8782

F 949.453.8785

Visit us at: **www.iogear.com**

©2010 IOGEAR®. All Rights Reserved. PKG-M1057-a

IOGEAR, the IOGEAR logo, MiniView, VSE are trademarks or registered trademarks of IOGEAR. Microsoft and Windows are registered trademarks of Microsoft Corporation. IBM is a registered trademark of International Business Machines, Inc. Macintosh, G3/G4 and iMac are registered trademarks of Apple Computer, Inc. IOGEAR makes no warranty of any kind with regards to the information presented in this document. All information furnished here is for informational purposes only and is subject to change without notice. IOGEAR assumes no responsibility for any inaccuracies or errors that may appear in this document.





About Us

FUN

IOGEAR offers connectivity solutions that are innovative, fun, and stylish, helping people enjoy daily life using our high technology products.

GREEN

IOGEAR is an environmentally conscious company that emphasizes the importance of conserving natural resources. The use of our technology solutions helps reduce electronic waste.