



3. Program in stallation of PC

After t he driver i s in stalled, stall t he USB Bridge Ca ble Application a s follows:

1. Power up the computer and insert the distribution CD-ROM in the CD-ROM drive.
2. Run the Setup program found in the G-UN161 folder on the distribution CD-ROM and follow the step-by-step procedure that the InstallShield Wizard takes you through. (Click on Next when you are ready to move on to the next step.)
3. After the installation completes, an icon representing a shortcut to the program is placed on your desktop. Double click on the icon to run the program.

Note: While not required, it is best to restart the computer before running the program.

1. System Requirements / Feature

System Requirements

- Any of the following Operating System:
 - Mac: OS 8.6 or higher
 - Windows: 95 OSR2.1 (BVersion) with USB Version 1214: 98 SE; 2000

- One Available USB Port
- Intel Compatible CPU: 486DX-66 or Higher

Features

- High speed data transfer rate - Up to 6 Mbps
- Familiar Windows and Mac user interface
- Easy drag and drop file transfer
- Standard file management functions (copy, delete, create folders) On both the local and Remote systems
- Includes print function for remote files
- USB 1.1 specification compliant
- Single chip (ASIC) USB Host-to-Host communication
- Fast, easy installation

2. PC Driver Installation

PC/Windows Driver Installation

- Insert the CD that came with the Smart Link.
- The New Hardware Wizard should have appeared, click NEXT to continue.
- A new dialog box should appear, make sure the default setting is selected ("Search for the best drivers for your device") and click NEXT to continue.
- If you are prompted again to insert an installation CD ignore and continue on.
- Check Specify a location and click Browse
- Find the UN161 folder found on the CD. Select the folder related to your OS version. Click OPEN. Once done click OK.
- Click through and finish the installation.

If t he Me Hadware Wizard did not appear follow t hese in structions

- Right-click on My Computer and select properties
- Click the device manager tab.
- Find the icon related to the Smart Link and right click and select properties.
- Click update driver.
- Run through the installation Wizard as noted above.

Reboot your computer

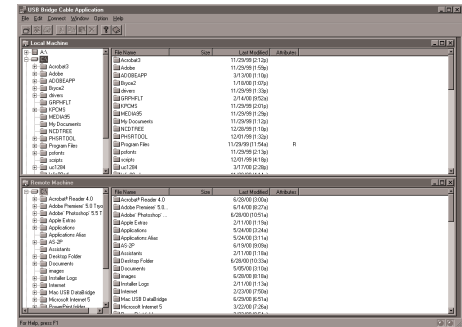
5. Operation

The program enables you to connect a Mac to PC, PC to PC, or Mac to Mac for file management and transfer purposes.

PC/Windows Operation

• File Management

1. With the computers up and running, plug the USB Network Cable into both computers.
2. On each computer, Double Click on the USB Bridge program's shortcut icon (on the desktop). The *USB Bridge Cable Application's* main window appears:



PC Operation Cont.

3. The main window is divided into two panels. The local computer's file and directory structure appears in the top panel; the remote computer's file and directory structure appears in the bottom panel.

4. The directory windows operate in a similar manner to the familiar Windows Explorer file manager. You can create and delete folders; copy and delete files; etc. Using the usual menu bar commands, as well as drag and drop. These operations work both within a window, and between windows.

5. To print text and document files located on either computer with your local printer, Click on the file, then select Print from the File menu.

Note: There are two status indicators (that look like traffic lights) at the bottom right corner of the window. The left indicator is for the local computer; the right indicator is for the remote computer. They are green when the connection is good; red when a connection has not been established. Both lights must be green in order to exchange files between the local and remote computers.

PC Operation Cont.

Power Management and Remote Wakeup

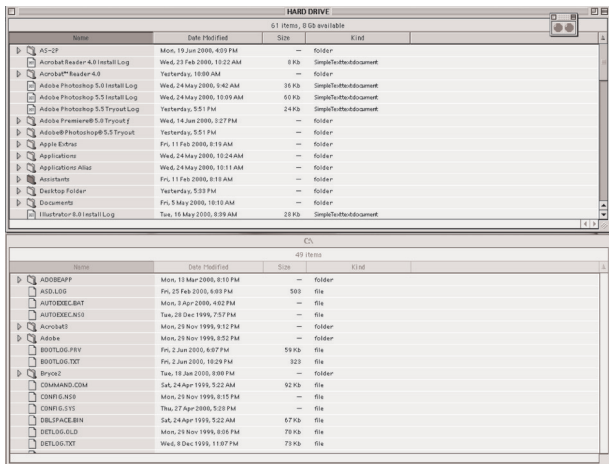
The USB Bridge Cable Application supports USB power management; a feature that is critical when working with Notebooks and other mobile computers. When either computer goes into suspend mode, the program draws less than 500µA of current from it. The program also supports remote wakeup. When the remote comuter is in suspend mode, clicking on any file or folder in the Remote window wakes the computer up.

Note: If you do not wish to use this feature, open the *Option* menu; select *Setting*, and disable the *Allow System to Suspend* option.

6. Mac Operation

1. With the computers up and running, plug the USB Network Cable into both computers.
2. On each computer, open the folder that contains the program files (if you haven't dragged the *Mac USB DataBridge PPC* program icon onto the desktop); Double Click on *Mac USB DataBridge PPC*. A folder opens with local computer's file and directory structure displayed; the remote computer's file and directory structure doesn't appear yet.
3. Open the *Connect* menu; selet *Remote*; select the remote volume you want to access; then Click on **OK**. A new folder opens with the contents of the remote vourne displayed.

Mac Operation Cont.



Note: There are two status indicators (that look like traffic lights) at the upper left. The left indicator is for the local computer; the right indicator is for the remote computer. They are green when the connection is good; red when a connection has not been established. Both lights must be green in order to exchange files between the local and remote computers.

7. PC to Mac Operation

Transferring files between PCs and Macs works the same as exchanging PC to PC or Mac to Mac files.

File transfers work best on file formats that are supported on both systems -Adobe Illustrator files, MS Word files, or text files, for example. Occasionally, you may run into a problem with file formats that are only supported on one system not being recognized on the other system, in which case the files may not show up in the new location after you transfer them.

Note: Unlike the Mac, Windows needs the file name extension to identify which program a file is associated with in order to open the program by clicking on the filename.

Function	Specification
Connector	2 USB Type A Plugs
Cable Length	1.8 m (.9 m per segment)
Data Transfer Rate	Up to 6 Mbps
Network Protocol	TCP/IP, NETBEUI, IPX/SPX
Power Consumption	120 mW (max.)
Operating Temperature	5 - 40
Storage Temperature	-20 - 60
Humidity	0 - 80% RH, Noncondensing
Casing Material	Plastic
Weight	160 g

8. Warranty/Radio&TV Interference

Limited Warranty

IN NO EVENT SHALL THE DIRECT VENDOR'S LIABILITY FOR DIRECT, INDIRECT SPECIAL, INCIDENTAL, OR CONSEQUENTIAL DAMAGES RESULTING FROM THE USE OF THE PRODUCT, DISK, OR ITS DOCUMENTATION EXCEED THE PRICE PAID FOR THE PRODUCT.

The direct vendor makes no warranty or representation, expressed, implied, or statutory with respect to the contents or use of this documentation, and especially disclaims its quality, performance, and especially disclaims its quality, performance, merchantability, or fitness for any particular purpose.

The direct vendor also reserves the right to revise or update the device or documentation without obligation to notify any individual or entity of such revisions, or update. For further inquiries, please contact your direct vendor.

Radio &TV Interference

This equipment has been test and found to comply with the limits for a Class B digital device, pursuant to Part 15 of the FCC Rules. These limits are designed to provide reasonable protection against harmful interference in a residential installation. This equipment generates, uses and can radiate radio frequency energy and if not installed and used in accordance with the instructions, may cause harmful interference to radio communications. However, there is no guarantee that interference will not occur in a particular installation.