

BACK

IOGEAR
Address: 23 Hubbell, Irvine, CA 92618 USA
Toll Free: 888-9-IOGEAR
Phone: 949-453-8782
Web site: www.iogear.com
Email: support@iogear.com

back



Grassroots organizations are the backbone of the movement.

GUH285
10, Q1332

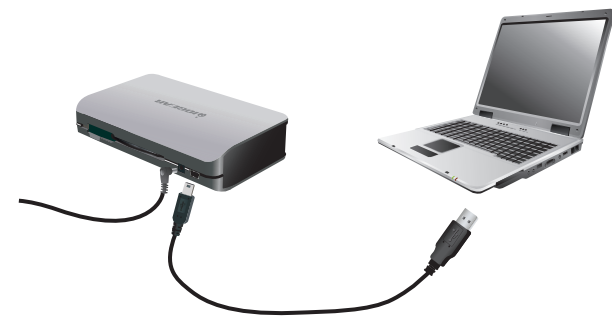
- 1 x GUH286
- 1 x Power Adapter
- 1 x USB Cable (Type A – mini-B) 5 feet
- 1 x CD
- 1 x Quick Start Guide
- 1 x Warranty/Registration Card

1. USB ports (5)
 2. Compact Flash
 3. Memory Stick
 4. Secure Digital
 5. XD
 6. MicroSD/M2
 7. Built-in Mini-B USB cable
 8. Power Connection
 9. Mini-B USB port

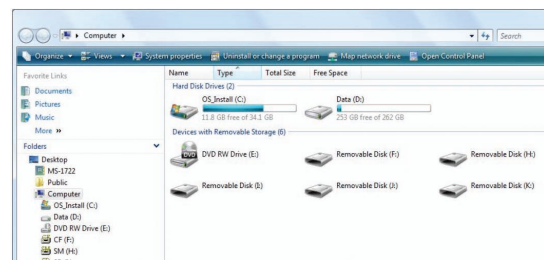
Step 1 - Plug the power adapter into GUH286 and connect the mini-B USB connector end of the included USB cable to the mini-B USB port of GUH286.



Step 2 - Connect the Type A connector end of the included USB cable to any available USB 2.0 port on your computer.



Once it is completed, you will see 5 Removable Disk devices showing up on My Computer.

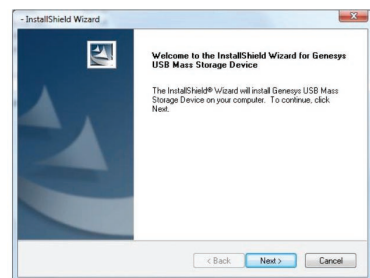


- 1) Plug in the power adapter to GUH286 and connect the mini-B USB connector end of the included USB cable to the mini-B USB port of GUH286.
- 2) Connect the Type A connector end of the included USB cable to any available USB 2.0 port on your computer.
- 3) The drive icon will show up on the desktop when a memory card or USB device is connected to the GUH286.

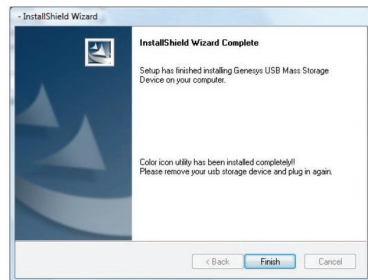


1) GUH286 package comes with a drive letter recognition software that helps users to identify different types of flash media and creates a user friendly experience. Insert the CD that comes with the package into the CD-ROM on your computer. Go to My Computer, then browse to the CD content. Double click on the **setup.exe** to begin the software installation.

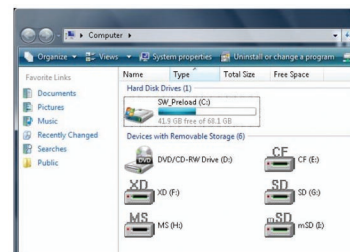
Name	Date modified	Type	Size
Common	1/31/2006 8:40 PM	File Folder	
Index	1/31/2006 8:40 PM	File Folder	
bin\Xc	1/31/2006 8:40 PM	File Folder	
bin\MSMDE	1/31/2006 8:40 PM	File Folder	
bin\CP	1/31/2006 8:40 PM	File Folder	
bin\IP4	1/31/2006 8:40 PM	File Folder	
Data1	6/9/2007 10:31 AM	VisualBASIC archive	1,405 KB
Data2	6/9/2007 10:31 AM	HCF File	21 KB
Data3	6/9/2007 10:31 AM	VisualBASIC archive	1 KB
E:\bin\JLH	5/9/2006 5:50 PM	Application Extension	300 KB
E:\bin\JLH	5/9/2006 10:03 AM	Application Extension	430 KB
E:\bin\JLH	5/9/2006 10:03 AM	VIC module	1 KB
ProductKey.dat	1/7/2005 8:17 AM	Configuration Task	1 KB
Setup	6/26/2007 12:03 AM	Application	114 KB
Setup	6/26/2007 12:03 AM	BTF File	62 KB
Setup	6/26/2007 12:03 PM	Configuration Task	1 KB
Setup	11/26/2005 10:03 AM	IDM File	27 KB
SETUP	6/18/2005 1:49 PM	PSC Groupset	412 KB



2) Follow the on-screen prompts to finish the installation. Click on Finish to complete the installation.



3) After the installation completes, go to My Computer and press F5 to refresh the page. You should see the drive letters are in place for each drive. When particular flash card is inserted into the drive, the color of the drive will change to RED color indicating it is active.



Important Note:

- MicroSD and M2 card shares the same port on your card reader which represented by mSD icon, and only one type of flash media card can be read and accessed at the same time.
- XD (Olympus DC Card) and SM card shares the same port on your card reader which represented by XD icon, and only one type of flash media card can be read and accessed at the same time.

You can charge and sync your mobile device (such as mobile phone) that has the mini-B USB connector available through the built-in mini-B USB cable on GUH286. Connect the built-in mini-B USB cable to the mini-B USB port on your mobile device, then your device is ready to be charged and synced through GUH286 with your computer.



1. Q: I tried to remove my flash media card from the card reader by going through the Safely Remove Hardware procedure, and all my card icons disappear after I remove any one of my flash media card. How do I get it back to work?

A: Plug the USB cable from the GUH286 and plug it back in. You should see all 5 card icons showing up in My Computer. Before unplugging the USB cable from your GUH286, we strongly recommend you to ensure there is no active data transferring or connection to other USB devices through your USB hub. Please ensure to go through the Safely Remove Hardware procedure to remove other USB devices to ensure the data integrity of your important information.

2. Q: I installed the software and plugged in all the USB and power cables but nothing shows up in My Computer. What do I do?

A: When first connecting GUH286 to your computer, it usually takes from 30 seconds to up to few minutes depending on your system configuration for the USB hub and card reader to load. If you don't see the 5 card reader showing up in My Computer after a short wait, then try to unplug and USB and power cable, and plug them back into the GUH286. If this does not resolve the problem, please contact your retailer for this product.