

Federal Communications Commission (FCC) Statement / CE Statement

Federal Communications Commission (FCC) Statement

15.21
You are cautioned that changes or modifications not expressly approved by the part responsible for compliance could void the user's authority to operate the equipment.

15.105(b)
This equipment has been tested and found to comply with the limits for a Class B digital device, pursuant to part 15 of the FCC rules. These limits are designed to provide reasonable protection against harmful interference in a residential installation. This equipment generates, uses and can radiate radio frequency energy and, if not installed and used in accordance with the instructions, may cause harmful interference to radio communications. However, there is no guarantee that interference will not occur in a particular installation. If this equipment does cause harmful interference to radio or television reception, which can be determined by turning the equipment off and on, the user is encouraged to try to correct the interference by one or more of the following measures:
- Reorient or relocate the receiving antenna.
- Increase the separation between the equipment and receiver.
- Connect the equipment into an outlet on a circuit different from that to which the receiver is connected.
- Consult the dealer or an experienced radio/TV technician for help.

THIS DEVICE COMPLIES WITH PART 15 OF THE FCC RULES. OPERATION IS SUBJECT TO THE FOLLOWING TWO CONDITIONS:
1) this device may not cause interference and
2) this device must accept any interference, including interference that may cause undesired operation of the device.

FCC RF Radiation Exposure Statement:
This equipment complies with FCC radiation exposure limits set forth for an uncontrolled environment. End users must follow the specific operating instructions for satisfying RF exposure compliance. This transmitter must not be co-located or operating in conjunction with any other antenna or transmitter.

CE Statement

This device has been tested and found to comply with the requirements set up in the council directive on the approximation of the law of member states relating to EMC Directive 89/336/EEC, Low Voltage Directive 73/23/EEC and R&TTE Directive 99/5/EC.

Advanced Options

Further information on both the Digital Scribe and MyScript software is available from the start menu when these programs are installed. For help with the more advanced features of these programs please read these manuals. If your question is not answered, feel free to contact technical support. Support is available 24 hours a day by phone at 866-9-IOGEAR or 866-946-4327, and by email at support@iogear.com



About Us

- FUN**
IOGEAR offers connectivity solutions that are innovative, fun, and stylish, helping people enjoy daily life using our high technology products.
- GREEN**
IOGEAR is an environmentally conscious company that emphasizes the importance of conserving natural resources. The use of our technology solutions helps reduce electronic waste.
- HEALTH**
IOGEAR supports healthy and fit lifestyles. By integrating products with the latest scientific developments, IOGEAR's solutions enhance the life of end-users.



QuickStart Guide
Digital Scribe

© 2007 IOGEAR, INC.

GPEN100C
PART NO. 20-08

Welcome

Start Here!

Thank you for purchasing IOGEAR's Digital Scribe. You will enjoy the convenience and new/found speed that has made this technology an industry standard.

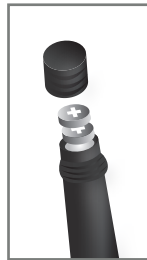
To register your product please visit <http://www.iogear.com/register>

Note:
Your order has been carefully packaged and inspected, and we hope you are pleased with the IOGEAR product you purchased. Please inspect the contents of the package to ensure that you have received all items and that nothing has been damaged. If you discover a problem, please contact your dealer immediately for assistance.

Installation

Installing/Replacing Pen Batteries:

1. Remove the battery compartment cover



2. Install two SR41 batteries, with the positive poles facing up as shown (Use the enclosed SR41 batteries)
3. Replace battery compartment cover

Batteries may be safely disposed of in normal household waste.
Contact your local government for disposal or recycling practices in your area.
Caution: Risk of explosion if battery is replaced by an incorrect type.
Note: Lifetime of the batteries may vary and cannot be guaranteed.
Supplied batteries are good for initial use only.

Installing/Replacing Ink Refill

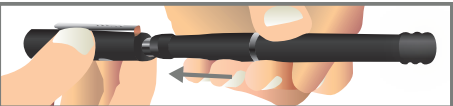
The top of the pen cap also functions as an ink refill extractor.
NOTE: Make sure you use a refill that is similar to the original standard refill (67.2mm long X 2.33mm diameter).

To replace the ink refill:

1. Detach the cap from the digital pen



2. Place the ink refill in the middle of the extractor. Hold the pen firmly, and apply pressure with the extractor against it

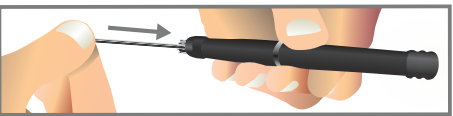


3. Pull the used Refill out

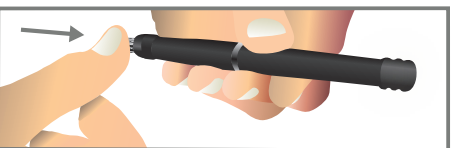


To insert a new refill

1. Slide the new refill into the tip of the pen

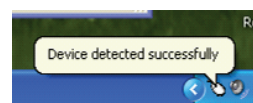


2. Gently press the new refill until it is lodged securely in place

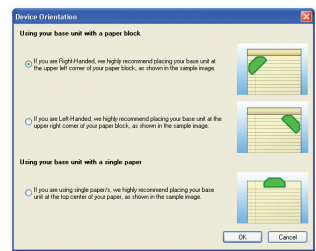


Software Installation

Before first using your IOGEAR Digital Scribe, please make sure you have installed the driver software from the included CDs. The first CD contains the Digital Scribe software and is required. The second CD contains the MyScript Notes Lite OCR software and is only needed if you wish to convert your handwritten notes to text for use in email or a word processor. Simply insert the Digital Scribe CD first and follow the wizard's instructions, then do the same with the MyScript CD. Once you have finished installing, open the Digital Scribe software from the icon on your desktop. Insert the USB plug on the wireless receiver into an available port in your computer or a USB hub. An alert bubble should pop up informing you that the device has been detected successfully.

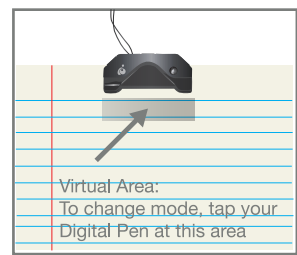


Extend the cable on the receiver to an appropriate length to reach the top of your writing area. Using one of the three clips, firmly secure the receiver to the most convenient position at the top of the page and confirm your choice in the Digital Scribe software.

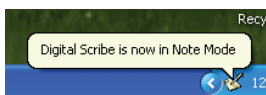


Mouse mode and Note mode

Your Digital Scribe will initially be in Mouse mode. In this mode tapping the pen in the writing area or pressing the button on the side of the pen will act like a single mouse click. Pressing and holding the pen down for a moment then clicking the button will act like a right mouse click.

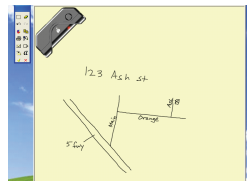


When you are ready to create handwritten notes, switch your Digital Scribe into Note mode. You can do this by either pressing the button on the top of the receiver, or tapping the pen once in the small area directly in front of the receiver. You will see an alert bubble whenever you successfully change from Mouse to Note mode or vice versa.

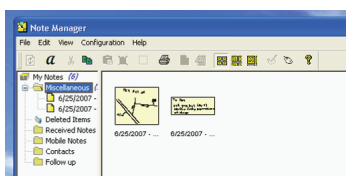


Creating Notes

Drawing with your Digital Scribe while in Note mode will create a new note automatically if you do not have one open. The pen is very accurate, so there is no need to watch the screen while writing. You can change the size or color of the on-screen pen at any time using the floating toolbar to the left.

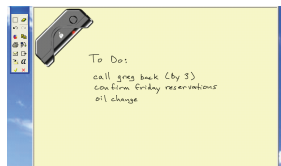


When you have finished with your note use the other toolbar buttons to save your note to a picture file, email it, print it, or simply save it to your Note Manager window for later use.

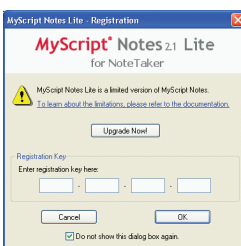


Handwriting Recognition

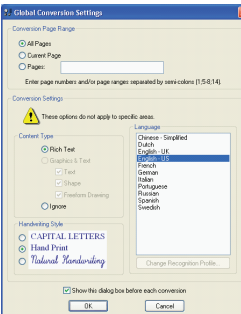
If you have installed the MyScript Notes Lite software, you can convert your printed or handwritten notes into text for easy use in a word document or email. When MyScript is installed the Convert to Text button on the toolbar is enabled. Click it to convert the currently active note.



When first used you will be required to enter your registration key. You can find this key on the envelope of the My Script installation CD. Check the box at the bottom of the window to avoid being asked again.



In the main conversion window you will only need to choose your preferred language and handwriting type. Select whether you are using capital block letters, standard printing, or cursive handwriting and click OK.



The converted text will then appear on the right pane. Make corrections if necessary, then copy the text or use the toolbar buttons to send your converted note to an email, Word document or Notepad.

