

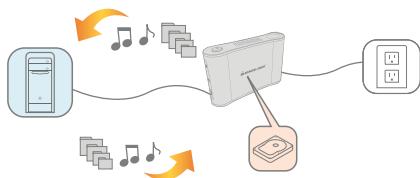
9. Screw the side panel down securely to the enclosure using the side panel screws (PM2.5 X 6) provided. This will keep the drive locked in place to avoid movement of the board and the connectors which your PC will be utilizing.

PM2.5 x 6

10. Finally place the ventilation cover back over the side panel and lock it into place as demonstrated in the below diagram.

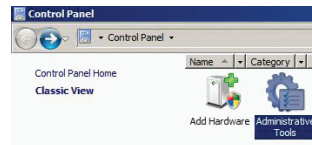


11. After clipping the side cover back into place you're ready to utilize your new IOGEAR enclosure and external drive.



12. At this point, plug in the AC adapter first to your outlet and then to the external enclosure's DC IN. Plug in the cable provided (either eSATA or USB depending on the available ports on your PC/MAC) and press the power button, and you should be ready to go.

If the drive is not being recognized, it is more than likely not properly formatted. If this is the case, you can follow the steps below to allow your system to access the drive.

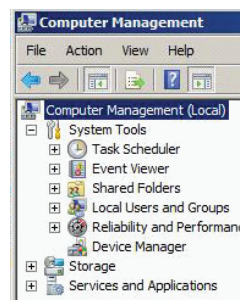


Go to – Control Panel first, then select Administrative Tools.

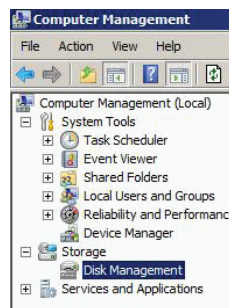
The top option listed should be Computer Management, select that to proceed.

Name	Date modified	Type	Size
Computer Management	11/2/2006 5:53 AM	Shortcut	2 KB

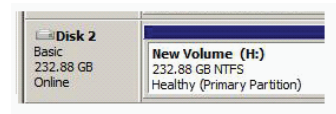
Under Computer Management you will see an option listed as Storage, select Storage.



Selecting Storage will bring up a new option of Disk Management; select Disk Management at this point.



After opening Disk Management a list of drives attached to the system should become visible. If you are not sure which drive is the new external SATA drive you've installed, simply unplug the eSATA or USB cable connecting the enclosure to the PC. By doing this you should see one of the drive letters disappear, simply plug the cable back in and watch for which drive reappears. The drive that appears at that point will be the external SATA drive, which you will need to make sure has been formatted properly for Windows to access.

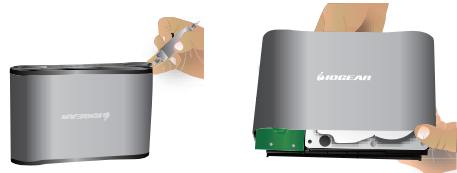


Congratulations! You're now set up and ready to go with your new (3.5" eSATA 3Gbps & USB 2.0 Combo Hard Drive Enclosure – GHE7135S3). You can now add storage to your PC without having to clutter your workspace anymore.

Note:

1. To open it up for trouble shooting or exchanging the hard drive, please remove the ventilation plastic cover with a simple tool like a flat screw driver. Then remove four screws to take out the side panel.

2. In the event the plastic tray (with hard drive mounted) is hard to retrieve, you may need to open both side panels following the approach above. This can be the case, if the heat transfer pad is applied. Gently push the tray forward from one side while retrieving it from the other side in order to slide out your hard drive. See images below respectively.



Welcome

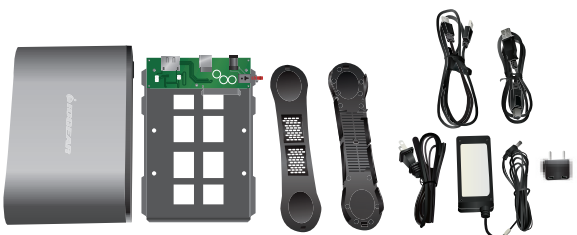
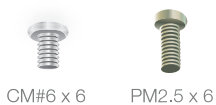
Start Here!

Thank you for purchasing the IOGEAR (3.5" eSATA 3Gbps & USB 2.0 Combo Hard Drive Enclosure) – GHE7135S3. The enclosure allows you to connect your PC to a 3.5" SATA hard drives externally with all the speed and functionality of true SATA 3Gb/s with the option of utilizing USB.

Package Contents

This package contains:

- IOGEAR 3.5" eSATA 3Gbps & USB 2.0 Combo Hard Drive Enclosure
- USB 2.0 cable (3 ft)
- eSATA cable (3 ft)
- 4 x HDD Screws (CM#6 X 6)
- 4 x Side Panel Screws (PM2.5 x 6)
- Universal power supply
- European plug changer
- Quick Start Guide



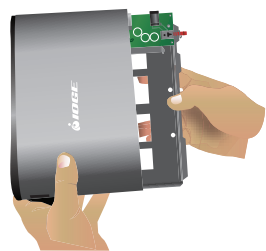
Requirements

- Available eSATA Port or USB 2.0 Ports
- PC System requires Windows 2000/XP/Vista
- Mac OS Compliant with USB2.0
- Internal SATA Hard drive required

Installation

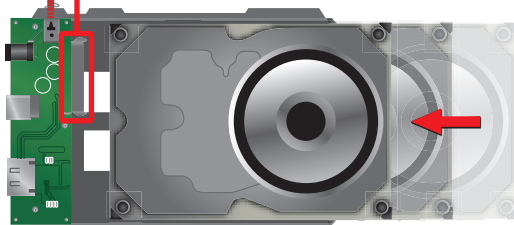
This document guides the user through the installation and basic setup. For assistance on how to open the drive please view the images below and follow the step by step process.

1. Separate the enclosure from the board by sliding the board out carefully and placing it on a static free surface.



2. Once you have removed the board from the inside of the enclosure, slide your hard disk into the connector attached to the board as shown below:

SATA Power Connector



3. Align the hard drive relative to the screw holes of the board

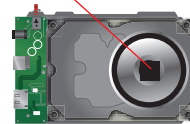


4. After the drive has been connected to the board, use the HDD screws (CM#6 x 6 provided) to fasten the drive to the base and to ensure the drive is locked in securely.



5. OPTIONAL - After the drive is mounted and screwed down to the plastic board, before you slide the board into the enclosure, apply the self adhesive heat transfer pad (supplied) on the drive. See below for a visual example.

Apply the pad near the center.



6. Align the Hard drive board to the enclosure before you insert the unit. Note: If you have used the heat transfer pad, then slowly align the board to the enclosure and slide it in by applying pressure until the drive is inserted in full and aligned with Power, USB and eSATA Port from the outside.

Limited Warranty

IN NO EVENT SHALL THE DIRECT VENDOR'S LIABILITY FOR DIRECT, INDIRECT, SPECIAL, INCIDENTAL, OR CONSEQUENTIAL DAMAGES RESULTING FROM THE USE OF THE PRODUCT OR ITS DOCUMENTATION EXCEED THE PRICE PAID FOR THE PRODUCT.

The direct vendor makes no warranty or representation, expressed, implied, or statutory with respect to the contents or use of this documentation, and especially disclaims its quality, performance, merchantability, or fitness for any particular purpose.

The direct vendor also reserves the right to, but not limited to, revise or update the device or documentation without obligation to notify any individual or entity of such revisions, or updates. For further inquiries please contact your direct vendor.

To register your product please visit <http://www.iogear.com/register>

Contact

Toll Free 866-9-IOGEAR (USA)
Phone: 949-453-8782
23 Hubble
Irvine, CA 92618 USA
www.iogear.com
support@iogear.com



Quick Start Guide

3.5" eSATA 3Gbps & USB 2.0 Combo Hard Drive Enclosure

GHE7135S3
PART NO. Q1041

About Us

- **FUN**
IOGEAR offers connectivity solutions that are innovative, fun, and stylish, helping people enjoy daily life using our high technology products.
- **GREEN**
IOGEAR is an environmentally conscious company that emphasizes the importance of conserving natural resources. The use of our technology solutions helps reduce electronic waste.
- **HEALTH**
IOGEAR supports healthy and fit lifestyles. By integrating products with the latest scientific developments, IOGEAR's solutions enhance the life of end-users.



© 2007 IOGEAR, INC.