



# Installation Guide

eSATA 1.5 Gbps 2-port Cardbus Card

GPS702W6

PART NO. M0555



## Table of Contents

|  |    |
|--|----|
| Introduction   | 4  |
| Features   | 5  |
| Package Contents                                     | 6  |
| Software Installation                                | 7  |
| Federal Communications Commission<br>(FCC) Statement | 11 |
| CE Statement   | 13 |
| Limited Warranty                                     | 14 |
| Contact  | 15 |

## Introduction

This Serial ATA 2 Port CardBus Host Adapter is a 32bit CardBus card with dual fully compliant Serial ATA ports. The SATA port can access SATA storage media such as: Hard drives, CD-RWs, DVD-ROMs and DVD-RAM drives. The board supports a 32-bit PC Card interface and a Serial ATA Generation 1 at transfer rate of 1.5 Gb/s.

# Features

## **PC Card Interface**

- Integrated DMA engines.
- 32 bit CardBus fully compliant.

## **High Speed Serial ATA Interface**

- Dual high speed Serial ATA interface ports, each supporting 1st generation Serial ATA data rates (1.5Gb/s).
- Fully compliant with Serial ATA 1.0 specifications.
- Supports Spread Spectrum in receiver.
- Independent 256-byte FIFOs (32 bit \* 64 deep) per Serial ATA channel for host reads and writes.

## Package Contents

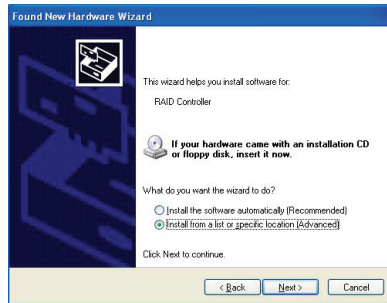
- Serial ATA 2 Port CardBus Host Adapter
- Quick Start Guide
- Driver CD

## Software Installation

To use this CardBus adapter, the host computer must be equipped with one free PCMCIA Card Type II or Type III slot. This section provides the information on how to install the drivers for the Serial ATA 2 Port CardBus Host Adapter within Windows.

## Windows XP installation

- 1 Insert the Serial ATA 2 Port CardBus into an available CardBus slot. Connect the serial ATA cable(s) between the Serial ATA 2 Port CardBus and the serial ATA device(s).
- 2 Windows will display the **'Found New Hardware Wizard'**. Click **'Next'**.
- 3 Insert the Driver CD into your CD-ROM/DVD Drive.
- 4 Select **"Install from a list or specific location (Advanced)"**, and click **"Next"**.



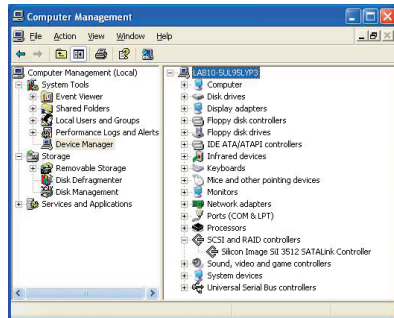


5. Specify the Driver CD location and click **Next**.
6. Points the wizard to [CD Drive Letter]:\SATA NonRaid\_2Port\Sil3x12 \Win98\_me\_2000\_xp\_nt4.0 \Driver, click **Open** then **OK**.
7. When the wizard indicates that it found a driver for the device click **'Next'**.
8. The wizard will now copy the required files to the system and initialize the driver. After starting the driver the wizard will display a completion dialog, click **'Finish'** to exit the wizard.



## Verifying Windows XP Installation

1. Right click on the **'My Computer'** icon, select **'Properties'**, left click on the **'Hardware'** tab, and select the **'Device Manager'** button.
2. Double click on **'SCSI and RAID Controllers'**, if there is no yellow **'!'** or **'?'** in front of **'Silicon Image Sil 3x12 SATALink Controller'** the driver is functioning properly.



## Federal Communications Commission (FCC) Statement

### Federal Communications Commission (FCC) Statement

#### 15.21

You are cautioned that changes or modifications not expressly approved by the part responsible for compliance could void the user's authority to operate the equipment.

#### 15.105(b)

This equipment has been tested and found to comply with the limits for a Class B digital device, pursuant to part 15 of the FCC rules. These limits are designed to provide reasonable protection against harmful interference in a residential installation. This equipment generates, uses and can radiate radio frequency energy and, if not installed and used in accordance with the instructions, may cause harmful interference to radio communications. However, there is no guarantee that interference will not occur in a particular installation. If this equipment does cause harmful interference to radio or television reception, which can be determined by turning the equipment off and on, the user is encouraged to try to correct the interference by one or more of the following measures:

- Reorient or relocate the receiving antenna.
- Increase the separation between the equipment and receiver.

- 
- Connect the equipment into an outlet on a circuit different from that to which the receiver is connected.
  - Consult the dealer or an experienced radio/TV technician for help.

THIS DEVICE COMPLIES WITH PART 15 OF THE FCC RULES. OPERATION IS SUBJECT TO THE FOLLOWING TWO CONDITIONS:

1. this device may not cause interference and
2. this device must accept any interference, including interference that may cause undesired operation of the device.

FCC RF Radiation Exposure Statement:

This equipment complies with FCC radiation exposure limits set forth for an uncontrolled environment. End users must follow the specific operating instructions for satisfying RF exposure compliance. This transmitter must not be co-located or operating in conjunction with any other antenna or transmitter.

## CE Statement

This device has been tested and found to comply with the requirements set up in the council directive on the approximation of the law of member states relating to EMC Directive 89/336/EEC, Low Voltage Directive 73/23/EEC and R&TTE Directive 99/5/EC.

## Limited Warranty

The manufacturer, IOGEAR, makes NO warranty or representation, whether express or implied, regarding the contents, use or suitability of this software, disk or documentation. IOGEAR specifically disclaims any and all warranties regarding the quality and performance of this software, disk or documentation including, but not limited to the implied warranty of merchantability and implied warranty of fitness for a particular purpose. IOGEAR shall not be responsible or liable for property damage, loss of use, interruption of business, lost profits, lost data or other consequential, punitive or special damages, however caused and however alleged.

IOGEAR reserves the right to revise or update the software, disk or documentation without advance notification of such revision or update. For additional information please contact IOGEAR at:  
Email – [support@iogear.com](mailto:support@iogear.com), Telephone - 949-453-8782 or toll free 866-9-IOGEAR, or  
Fax - 949-453-8785.

## Contact

Toll Free: (866) 9-IOGEAR

Phone: (949) 453-8782

23 Hubble

Irvine, CA 92618 USA

[www.iogear.com](http://www.iogear.com)

[support@iogear.com](mailto:support@iogear.com)

©2007 IOGEAR. All Rights Reserved. PART NO. M0555

IOGEAR, the IOGEAR logo, MiniView, VSE are trademarks or registered trademarks of IOGEAR, Inc. Microsoft and Windows are registered trademarks of Microsoft Corporation. IBM is a registered trademark of International Business Machines, Inc. Macintosh, G3/G4 and iMac are registered trademarks of Apple Computer, Inc. IOGEAR makes no warranty of any kind with regards to the information presented in this document. All information furnished here is for informational purposes only and is subject to change without notice. IOGEAR, Inc. assumes no responsibility for any inaccuracies or errors that may appear in this document.



## About Us



### FUN

IOGEAR offers connectivity solutions that are innovative, fun, and stylish, helping people enjoy daily life using our high technology products.



### GREEN

IOGEAR is an environmentally conscious company that emphasizes the importance of conserving natural resources. The use of our technology solutions helps reduce electronic waste.



### HEALTH

IOGEAR supports healthy and fit lifestyles. By integrating products with the latest scientific developments, IOGEAR's solutions enhance the life of end-users.