

# Bluetooth™ GPS with Navigation Software

---

*Software Quick Start Guide (GBGPS201)*






**©2004 IOGEAR. All Rights Reserved. PKG-M0129QS-SW**

IOGEAR, the IOGEAR logo, MiniView, VSE are trademarks or registered trademarks of IOGEAR, Inc. Microsoft and Windows are registered trademarks of Microsoft Corporation. IBM is a registered trademark of International Business Machines, Inc. Macintosh, G3/G4 and iMac are registered trademarks of Apple Computer, Inc. IOGEAR makes no warranty of any kind with regards to the information presented in this document. All information furnished here is for informational purposes only and is subject to change without notice. IOGEAR, Inc. assumes no responsibility for any inaccuracies or errors that may appear in this document.

## Overview

The IOGEAR Bluetooth GPS system is a real-time navigation system. The Bluetooth GPS receiver allows you to receive positioning data from satellites and connect to mobile computing devices via Bluetooth, without cables. It provides high position accuracy and reliable tracking capabilities. The ultra low-power design and long-life rechargeable battery gives you 25 hours of continuous usage and eliminates constant recharging between uses. It is portable and lightweight, so you can put it on the dashboard or any other location that provides a direct line of sight to the sky.

You will never get lost again!



System Requirements . . . . .	02
Software Installation and Usage . . . . .	03
Configure the software to use with GPS . . . . .	17
How to Use the software . . . . .	39

## System Requirement

### **Laptop/Desktop:**

Windows ME/2000/XP

A minimum of 256MB system RAM and at least 512MB of free hard disk space

Must be Bluetooth-enabled and support serial port profile

### **PDA (Pocket PC):**

Requires Microsoft Pocket PC 2002 or later

PDA must have at least 266 MHz processor with at least 64MB of free main memory

At least 64 MB storage card to load additional maps is recommended

Must be Bluetooth-enabled and support serial port profile

## Software Installation

### Checklist

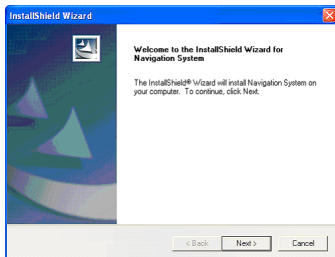
Before proceeding, please check the following:

- This guide assumes you already have Microsoft ActiveSync installed and configured to transfer data between your PDA and computer.
- Connect your PDA to the computer via its cradle or synchronization cable

## Software Installation

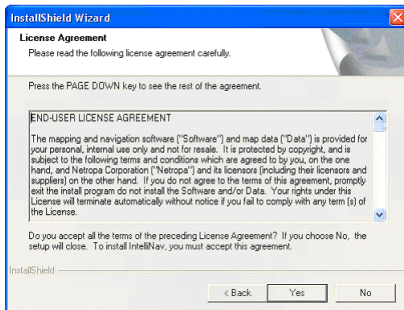
### Install the Software

1. Insert the setup installation CD that came in the package. The CD will auto-start and begin the installation procedure.
2. The installation wizard will present you with the window below. Press Next to continue.



## Software Installation

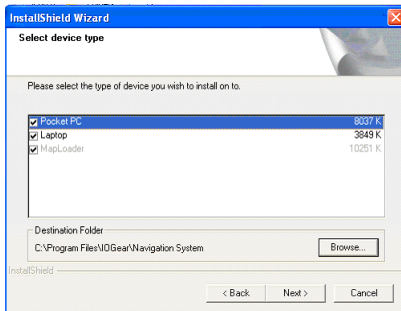
3. If you accept the license agreement, click Yes.





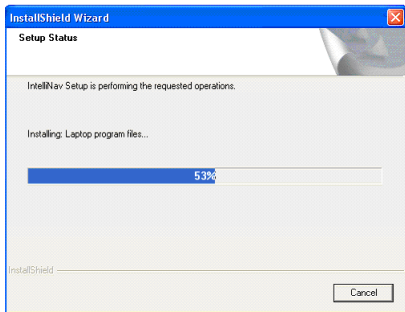
## Software Installation

4. On the next window, you can select the version of the navigation software that you wish to install. Please make your selection below, then click Next.



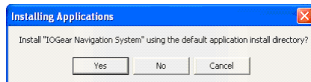
## Software Installation

5. Wait a few moments as the installation files are transferred to your computer.



## Software Installation

6. If you checked the "Pocket PC" box, you will get a prompt similar to the image below. If you wish to install the program in your PDAs main memory, click Yes. If you wish to install the program in your PDA's main memory, click Yes.

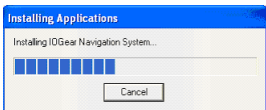


However, if you wish to install the navigation software in an alternate location, click No. You will then be presented with a window where you can specify where to install the program files. Click OK to confirm your selection.



## Software Installation

7. The software will prepare the files to be installed on your PDA.

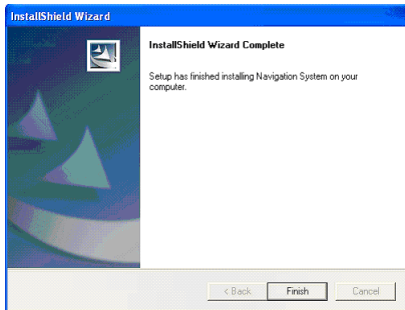


8. Check your PDA for additional steps to complete program installation.



## Software Installation

9. Click Finish to complete the installation.



## Software Installation

### 10. Installing Maps

Once you have loaded the map software, you can select the maps that you wish to install on your device. There are two methods to install your maps – by region, or by city. If you have less than 64MB of storage, it is recommended to install maps “By City.” However, if you have sufficient storage space, you can install your maps using the option By Region.

If you look on the right-hand side, you can select the Target Location where you want to load the maps (on your PDA or computer). You can also see here the available storage space of your selected location, and the size in megabytes of your selected maps.

#### Method 1 - By Region:

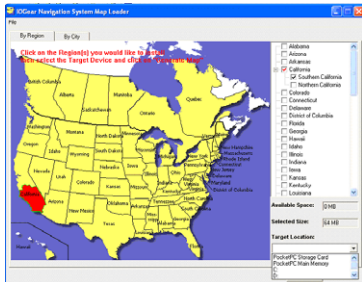
Using this option you can install maps for an entire state. If the state of your choice has a “+” sign next to it, it means that you can choose to

## Software Installation

install only portions of that state (as illustrated by the image below). To load the entire state map, simply make sure that any boxes below the “+” sign are checked.

Once you have selected all desired maps, click on “Generate Map” to begin map installation.

Alternatively, if your Computer/PDA has limited storage space, you can load maps using the option By City.

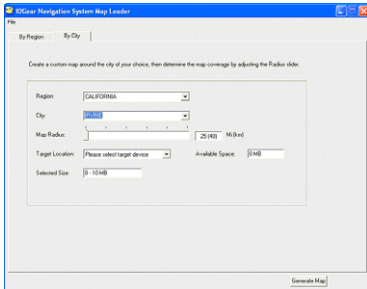


## Software Installation

### Method 2 - By City:

First select a Region (state) for your desired map. Next select the city, and the map radius in which you plan to use the GPS system.

Under Target Location, specify where you want to load the maps. When you're ready to begin map installation, click on "Generate Map."





## Software Installation

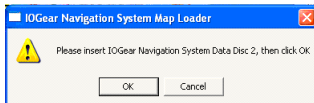
11. The installation software will now begin installing your maps.



## Software Installation

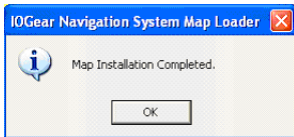
12. Depending on your selections, you may be prompted to insert the CD where your map data is located. Please do so and click OK to continue.

**Note: Please be patient as map installation may take up to 30 minutes, depending on the size of the maps being loaded.**



## Software Installation

13. Once installation is completed, you will see a window like this:



## Configure the Software to use with your GPS

### Checklist

Before proceeding, please check the following:

- Make sure you have installed the Navigation software on your device
- You have installed all your desired maps
- Your Computer/PDA has established a Serial port connection with your GPS unit, as described in the “Hardware Quick Start Guide.” If you do not carry out this step, the software will not be able to find the GPS unit.

**Note:** Instructions provided here are for PDA software. However, the steps for the PC version of the software are almost identical.

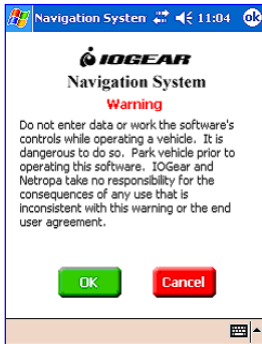
## Configure the software to use with you GPS

1. Go to your programs folder on your PDA and tap on the map icon located there to load the navigation software.



## Configure the software to use with you GPS

- At start-up, you will be presented with a warning message on steps to follow to ensure your security while using your GPS equipment. Simply click OK to continue.



## Configure the software to use with you GPS

3. If you have already established GPS position, the map will display your current location. Otherwise, it will display the last known location.



## Configure the Software to use with your GPS

The icons you see on the screen allow you to quickly change the most used settings for your navigation software.



Allows you to turn volume on/off.



Allows you to enter a destination, change to map view, change route/display options, set speed alert, record track information, adjust volume, and view GPS Info.



View GPS Info



Change your orientation



## Configure the Software to use with your GPS

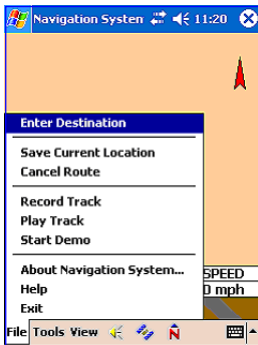
If you would like to access other features of the software, please click on the File, Tools, and View menu, located on the bottom of the window.

**NOTE:** Once you are using the map for navigation, if you do not tap on the PDA screen, this menu on the bottom will auto-hide. To bring it back up, simply tap anywhere on the PDA screen.

## Configure the Software to use with your GPS

### File Menu

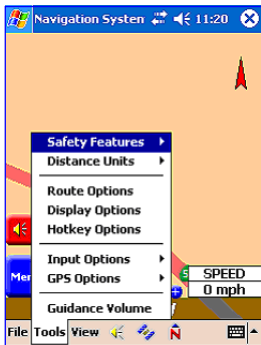
Among the tasks you can do here include entering a destination to display block-to-block directions, record your trip or playback a recorded trip. If you want to see a demonstration of your trip, you can click on Start Demo to see a demonstration of your route.



## Configure the Software to use with your GPS

### Tools Menu

This menu offers some useful features such as speed alert, display options (standard view, 3- view), automatic detection of the GPS unit (auto detect), and voice commands volume.

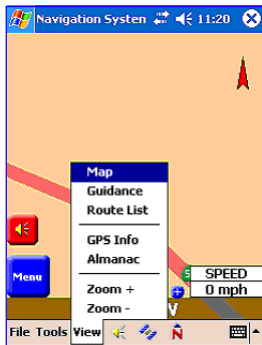


## Configure the Software to use with your GPS

### View Menu

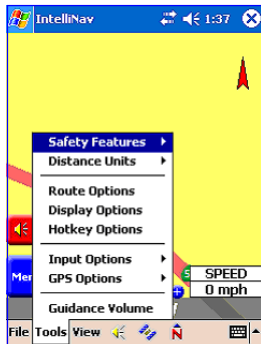
Under the view menu, some of the most useful links are GPS Info that allows you to check how many satellites your GPS unit is linked to; Almanac which gives you information about Sunset/Sunrise, and Moon phases; and Zooming In/Out feature.

For detailed instructions on using the software, please consult the navigation software user manual included on the setup CD.



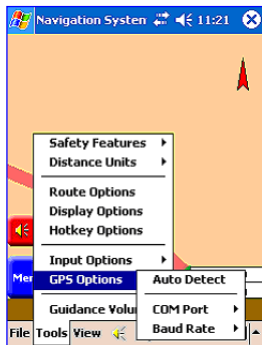
## Configure the Software to use with your GPS

4. The first thing we want to do is configure the navigation software to detect the Bluetooth GPS unit. To do this, click on Tools, which will bring up a menu like the following:



## Configure the Software to use with your GPS

5. Now, select Tools > Auto Detect.



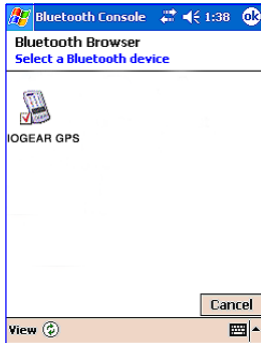
## Configure the Software to use with your GPS

6. The navigation software will begin detection of your GPS unit. Simply click OK to begin scanning.



## Configure the Software to use with your GPS

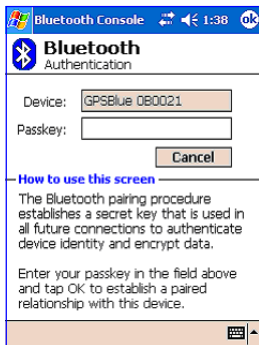
7. At this point, if your PDA has not established a connection with your Bluetooth GPS, you may get a window displaying all the Bluetooth devices in your range. If so, please select the Bluetooth GPS and click OK.





## Configure the Software to use with your GPS

You may also be prompted to enter a Passkey or PIN Code. If so, please enter "0000" (four zeroes), and then click OK.



## Configure the Software to use with your GPS

8. Once the software has detected your GPS, you simply have to click OK to confirm the settings.



## Configure the Software to use with your GPS

**Note:** If the software cannot detect your GPS unit, please make sure a Bluetooth serial connection is established between your device and GPS.



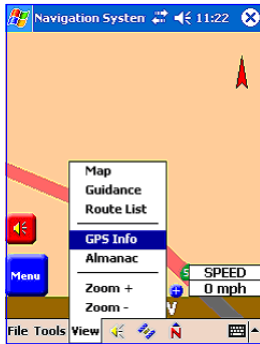
## Configure the Software to use with your GPS

9. Once you have established connection to the GPS unit, you will be taken to the map view.



## Configure the Software to use with your GPS

10. The next step is to verify that the GPS has established its position. To do this, click on View > GPS Info.



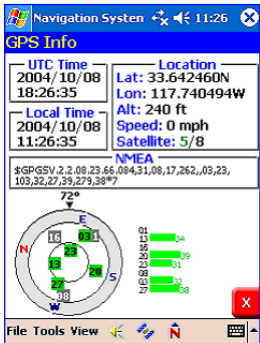
## Configure the Software to use with your GPS

11. If the GPS unit has established its position, you will see something similar to the window below. The green bars indicate the satellites to which the GPS unit is linked to. The red bars indicate that a link to that particular satellite has not been established. In order to use the GPS, you need to be connected to at least three (3) satellites.

## Configure the Software to use with your GPS

### GPS position established:

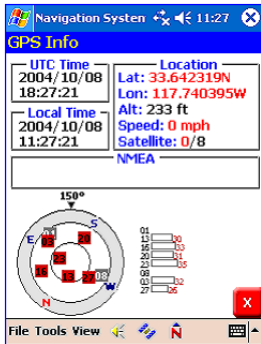
In this case, you can see that the GPS is connected to 5 out of 8 satellites:



## Configure the Software to use with your GPS

### GPS Position Unknown:

In this case, you can see that the GPS unit has not established its GPS position and is not linked to any satellites (indicated by the red bars).





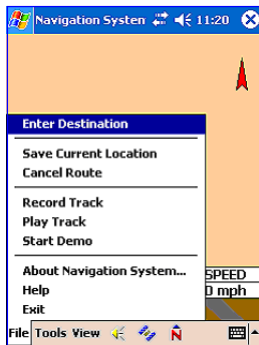
## Configure the Software to use with your GPS

If your GPS unit has problems linking to satellites, please try the following:

- Move the GPS away from any tall buildings/structures
- Move GPS away from any object that can interfere with wireless signals
- Place the GPS in a location where it has a clear view to the sky (preferably outdoors)

## How to use the software

1. To begin using the software, click on File > Enter Destination.



## How to use the software

2. As you see from the figure below, you can set a destination from among the different categories. For this example, we will select **Address**.



## How to use the software

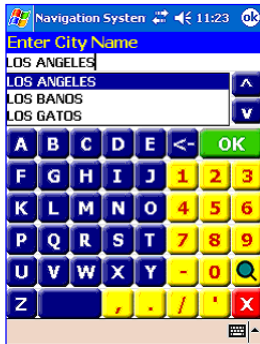
3. The next window will display the currently selected State. If you wish to change this, simply click Change and select the desire State for which you have already loaded a map.

In our example, we will select California, and select City First.



## How to use the software

4. Now enter the city name and then click the green OK button.



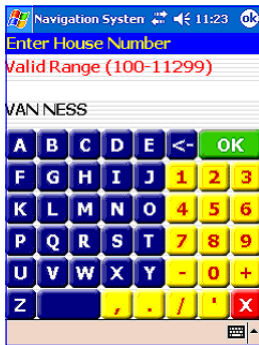
## How to use the software

5. Enter the street name, and then click on the green OK button.



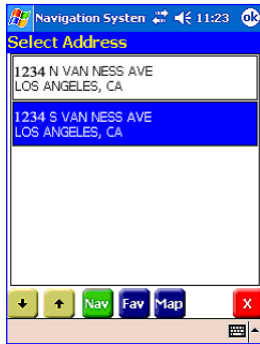
## How to use the software

6. Enter a number based on the valid range displayed, and then click the green OK button.



## How to use the software

7. Based on your selection, you will be presented with the possible destinations. Please select the correct one, and then click OK.





## How to use the software

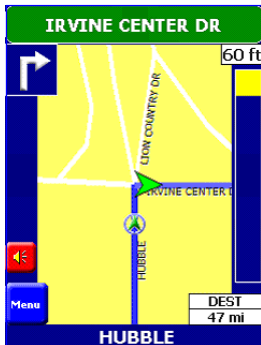
8. You will then be taken to the map view. If you are off the road, your map will indicate so and prompt you to drive to the nearest road.



## How to use the software

9. Once you are on the road, the map will display your location on the map and give you block-to-block directions.

For more detailed instructions on using the navigation software, please consult the Navigation User Manual.





## Contact info.

---

23 Hubble   Irvine, CA 92618   (P) 949.453.8782   (F) 949.453.8785   [www.iogear.com](http://www.iogear.com)