



Quick Start Guide

Dock Pro™ Universal Dual View
Docking Station

GUD3C4K2TAA

PART NO. Q1652

Package Contents

1

- 1 x GUD3C4K2TAA
- 1 x USB-C™ to C cable
- 1 x Power Adapter
- 1 x Quick Start Guide
- 1 x Warranty Card

System Requirements

Host device requirements

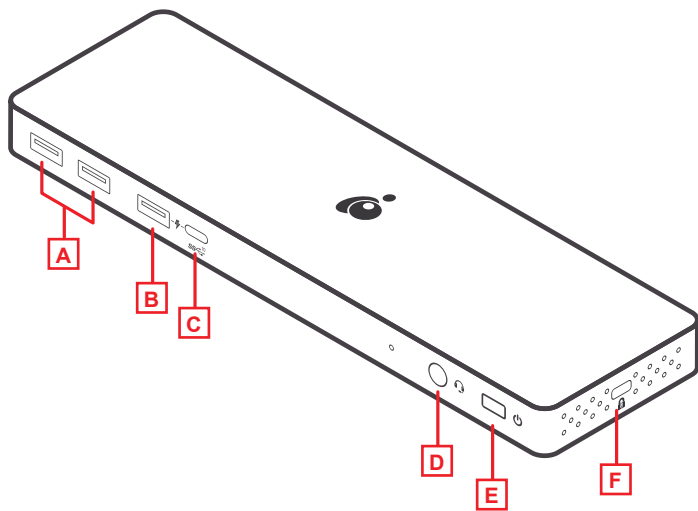
- USB-C (Thunderbolt 3/4 compatible) device

OS requirements

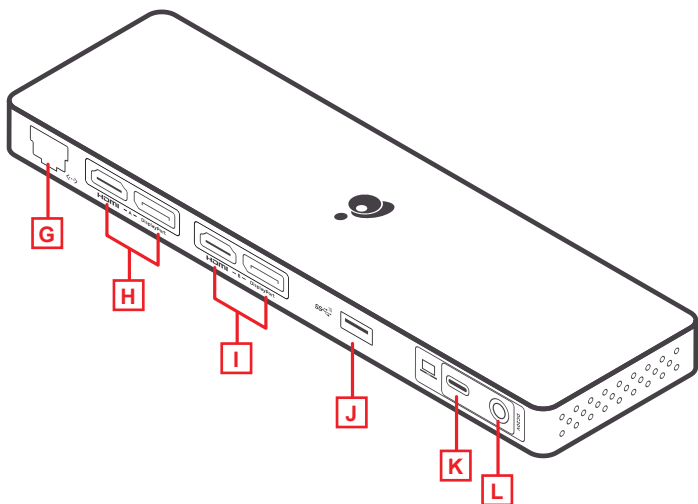
- Windows® 10, 11
- macOS® 10.13+
- DisplayLink Driver installation (<http://www.displaylink.com/downloads>)

NOTE: For M1 Mac Users, please check DisplayLink website for latest Mac Displaylink driver: <http://www.displaylink.com/downloads/macOS>

Overview



- A. USB-A 3.1 port Gen 1 (5gbps)
- B. USB-A 3.1 port Gen 1 (2.4amps)
- C. USB-C 3.1 port Gen 2 (10gbps)
- D. Headphone audio port
- E. Power button
- F. Security lock



G. Gigabit Ethernet port

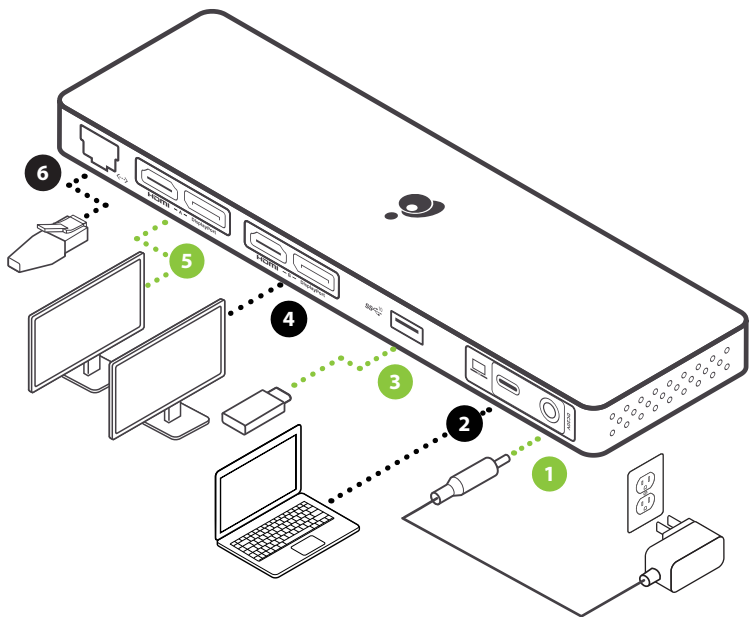
H. Video Stream A HDMI or DP (Up to 4K@60hz)

I. Video Stream B HDMI or DP (Up to 4K@60hz)

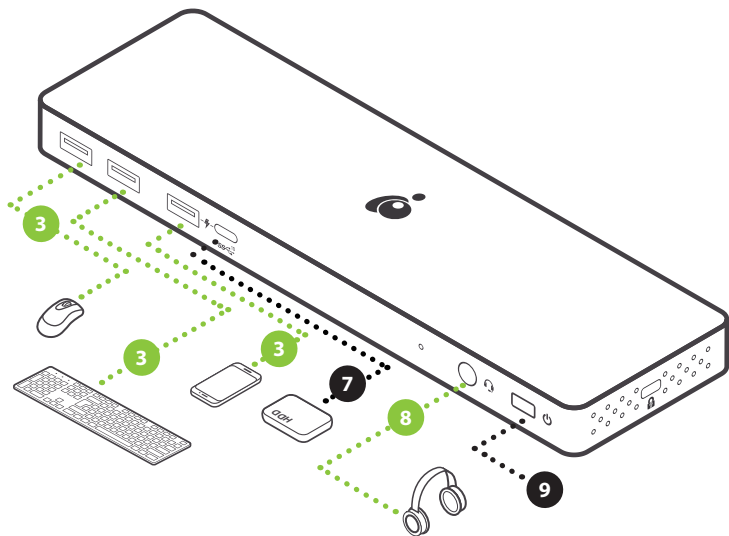
J. USB-A 3.1 port Gen 2 (10gbps)

K. USB-C connector to host laptop

L. Power adapter port



1. Connect barrel connector from power adapter into the power port
2. Connect USB-C host computer with included USB-C to C cable to USB-C host port
3. Connect a USB-A device into USB-A ports
4. Connect Video Stream 1 to Monitor 1 via HDMI or Displayport*
5. Connect Video Stream 2 to Monitor 2 via HDMI or Displayport*
6. Connect Ethernet cable to Ethernet port for network connectivity



7. Connect a USB-C device into the USB-C 3.1 Gen 2 port
8. Connect headphones into headphone audio port
9. Press Power button to turn on system

Note*

- Displaylink driver must be installed for Video Stream 1 and 2 to operate.

Video Tool Installaton

4

Please download the latest driver for your respective computer (Mac or Windows) from the DisplayLink support website at:
<https://support.displaylink.com/>

Monitor Configuration

5

Single Monitor	HDMI/DP 1	
	macOS 4096x2160 @60Hz	
	Win OS 4096x2160 @60Hz	
	HDMI/DP 2	
	macOS 4096x2160 @60Hz	
	Win OS 4096x2160 @60Hz	
Dual Monitor	HDMI/DP 1	
	macOS (mirror) 4096x2160 @60Hz	macOS (extended) 4096x2160 @60Hz
	Win OS (mirror) 4096x2160 @60Hz	Win OS (extended) 4096x2160 @60Hz
	HDMI/DP 2	
	macOS (mirror) 4096x2160 @60Hz	macOS (extended) 4096x2160 @60Hz
	Win OS (mirror) 4096x2160 @60Hz	Win OS (extended) 4096x2160 @60Hz

Limited Warranty

This product carries a limited or lifetime manufacturer's warranty.
For terms and conditions visit <https://www.iogear.com/support/warranty>

Register online at <https://www.iogear.com/register>

Important Product Information

Product Model _____

Serial Number _____

Contact Information

WE'RE HERE TO HELP YOU!
NEED ASSISTANCE SETTING UP THIS PRODUCT?

Make sure you:

1. Visit www.iogear.com for more product information
2. Visit www.iogear.com/support for live help and product support

IOGEAR

iogear.custhelp.com
support@iogear.com
www.iogear.com

Compliance Information

Federal Communication Commission Interference Statement

This equipment has been tested and found to comply with the limits for a Class B digital service, pursuant to Part 15 of the FCC rules. These limits are designed to provide reasonable protection against harmful interference in a residential installation. Any changes or modifications made to this equipment may void the user's authority to operate this equipment. This equipment generates, uses, and can radiate radio frequency energy. If not installed and used in accordance with the instructions, may cause harmful interference to radio communications. However, there is no guarantee that interference will not occur in a particular installation. If this equipment does cause harmful interference to radio or television reception, which can be determined by turning the equipment off and on, the user is encouraged to try to correct the interference by one or more of the following measures:

- Reorient or relocate the receiving antenna
- Increase the separation between the equipment and receiver
- Connect the equipment into an outlet on a circuit different from that to which the receiver is connected
- Consult the dealer or an experienced radio/TV technician for help

FCC Caution: Any changes or modifications not expressly approved by the party responsible for compliance could void the user's authority to operate this equipment.

This device complies with Part 15 of the FCC Rules. Operation is subject to the following two conditions:

- (1) this device may not cause harmful interference, and
- (2) this device must accept any interference received, including interference that may cause undesired operation.

CE Statement:

This device has been tested and found to comply with the following European Union directives: Electromagnetic Capability (2004/108/EC), Low Voltage (2006/95/EC) and R&TTED (1999/5/EC).