



# User Manual

Ethernet-2-WiFi Universal Wireless Adapter

**GWU637**

PART NO. M1357

Designed in California, USA ©2022 IOGEAR® All rights reserved. ATEN is a registered trademark of ATEN International Co., LTD. All other trademarks are the properties of their respective owners. Reproduction in whole or in part without permission is prohibited. Tested to Comply With FCC and CE Standards. FOR HOME OR OFFICE USE. Mac and the Mac logo are trademarks of Apple Computer, Inc. registered in the U.S. and other countries. Specifications subject to change without notice.

## Table of Contents

Package Contents	4
Hardware Requirements	4
Overview	5
Setting Up Your Ethernet-2-WiFi Universal Wireless Adapter	7
Compliance Information	33
Limited Warranty	35
Contact	35

## Package Contents

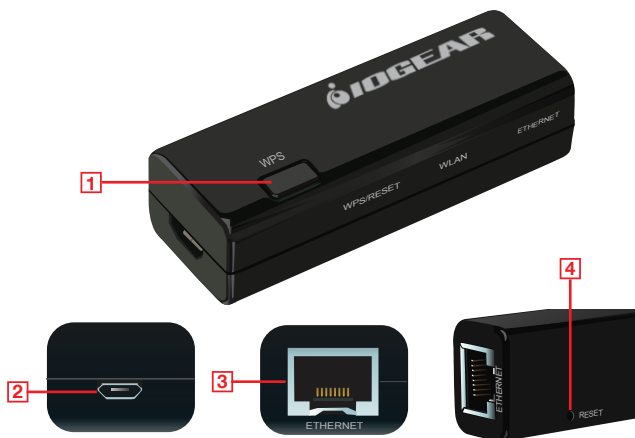
1 x GWU637 Ethernet-2-WiFi Universal Wireless Adapter  
1 x USB Power Cable  
1 x USB Power Adapter  
1 x Ethernet Cable (3ft)  
1 X Quick Start Guide  
1 x Warranty Card

## Hardware Requirements

- Ethernet enabled device
- Wireless Router with WPS Setup or Wireless Router without WPS Setup and Ethernet enabled Computer

## Overview

1. Wi-Fi Protected Setup (WPS) Button
  - Push and hold the WPS button for 3 - 5 seconds to enable the WPS feature.
2. Micro USB Port
3. Ethernet Port
4. Reset Button
  - Push and hold the reset button for 3 - 5 seconds to reset adapter to factory default settings.



## LED Indicators

### 5. WPS/Reset

- a. Solid – The unit is being reset to factory default settings
- b. Blinking – The WPS feature is enabled and active
- c. Off – The WPS feature is not active

### 6. WLAN

- a. Blinking – WLAN is transmitting or receiving data
- b. Off – WLAN is off

### 7. Ethernet

- a. Blinking – Data is being transmitted or received from connected Ethernet device
- b. Off – No active connection



## Setting Up Your Ethernet-2-WiFi Universal Wireless Adapter

### Wireless Configuration Using Wi-Fi Protected Setup (WPS)

1. Power on your Ethernet-2-WiFi adapter by connecting the included micro-USB cable to the USB power adapter and plugging into an available power outlet.
2. Refer to your wireless router's user manual for instructions to enable Wi-Fi Protected Setup.
3. Once your router enters into WPS pairing mode, press the WPS button on the Ethernet-2-WiFi adapter within two minutes to connect the adapter to your Wi-Fi network.
4. After the WPS/Reset and Ethernet LED indicators turn off, the WLAN LED will begin blinking, indicating the Wireless Protected Setup is complete and has successfully connected the adapter to your wireless network.
5. Use the included Ethernet cable to connect the Ethernet-2-WiFi adapter to your Ethernet enabled device such as a Blu-Ray player, HDTV or game console.

**Note:** Make sure to set your Ethernet device's network connection setting to **WIRED** for proper operation.

### Wireless Configuration - Windows

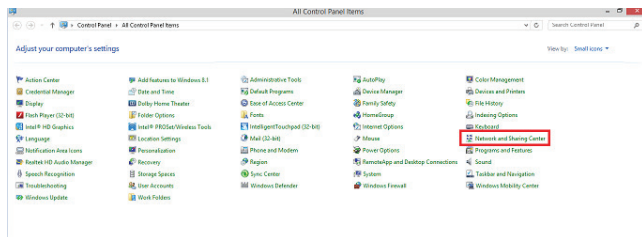
1. Start by disabling your PC's wireless connection.
2. Next, power on your Ethernet-2-WiFi adapter using either of the following methods:
  - Connect the included micro-USB cable to the USB power adapter and plug into an available power outlet. Connect the micro-USB cable to the Ethernet-2-WiFi adapter.
  - Connect the included micro-USB cable to the Ethernet-2-WiFi adapter and plug into an available USB port on your computer.

**Note:** It will take approximately 20 - 30 seconds to complete the boot-up sequence. When complete, the WLAN LED will blink to show it's ready to be configured.

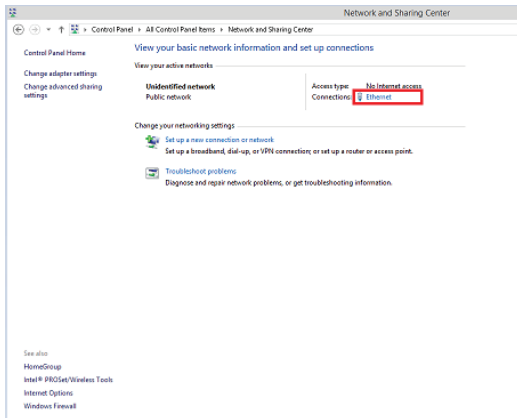
3. Connect one end of the included Ethernet cable to the Ethernet-2-WiFi adapter. Connect the other end of the Ethernet cable into the Ethernet port on your PC.

4. Open Control Panel and select **Network and Sharing Center**.

Note: Windows 10 users need to select **Network and Internet** settings before arriving at Network and Sharing Center.

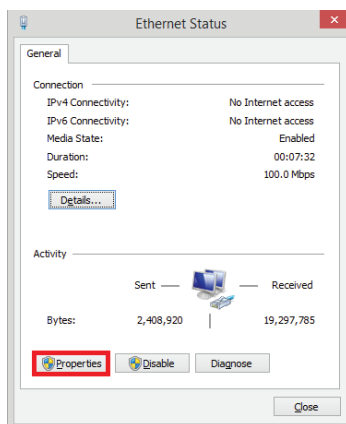


5. Click on **Ethernet**.

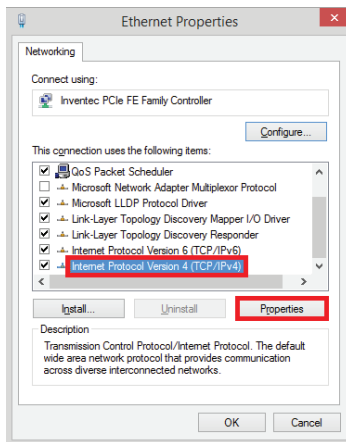




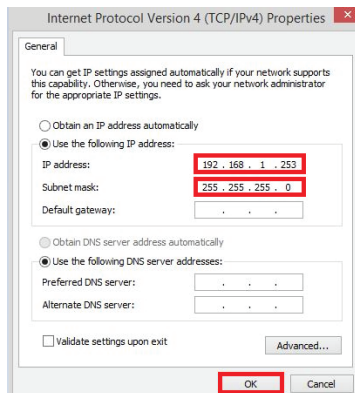
6. Select **Properties**.



7. Click to highlight **Internet Protocol Version 4 (TCP/IPv4)** and select **Properties**.



8. Choose **Use the following IP address**. Enter **192.168.1.253** in the **IP Address** field and **255.255.255.0** as **Subnet mask**. Click **OK** to continue.



9. Open an Internet Browser and enter **192.168.1.254** in the address bar.

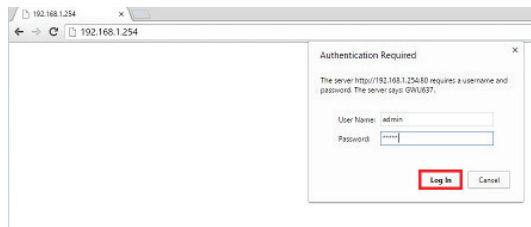


10. Enter the following factory default User Name and Password:

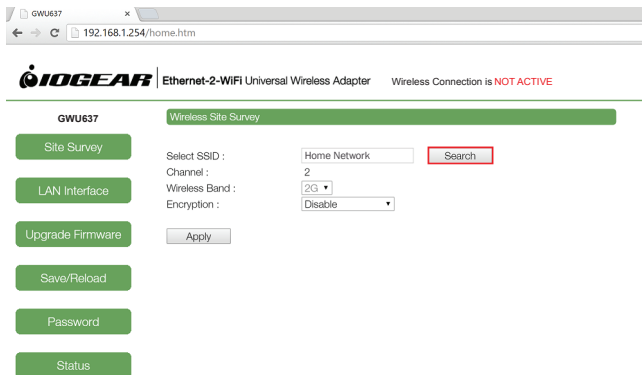
User Name: **admin**

Password: **admin**

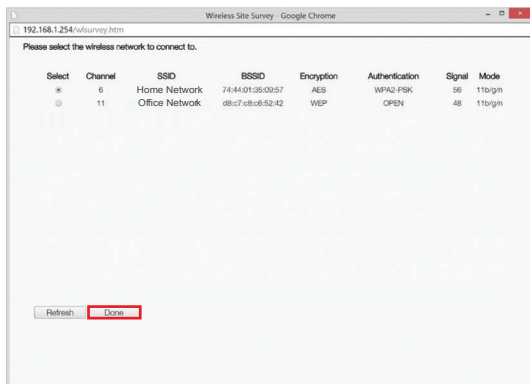
Click the **Log In** button.



11. The Ethernet-2-WiFi configuration utility will launch in your browser.  
Next, click **Search** to select the wireless network to connect the adapter to.



12. The Wireless Site Survey window will open. Select the desired wireless network to connect to and click **Done**.



13. If your wireless network is secured, choose the correct Encryption type from the dropdown menu and enter your network password. Click the **Apply** button to save settings.

GWU637 x  
192.168.1.254/home.htm

**IOGEAR** Ethernet-2-WiFi Universal Wireless Adapter Wireless Connection is **NOT ACTIVE**

GWU637 Wireless Site Survey

Site Survey

LAN Interface

Upgrade Firmware

Save/Reload

Password

Status

Select SSID : Home Network Search

Channel : 2

Wireless Band : 2G

Encryption : WPA2-PSK/AES

Pre-Shared Key : \*\*\*\*\*

Show Password: ☐

Apply

14. Click the **Finish** button to reflect the updated settings.

GWU637 x  
192.168.1.254/home.htm

**IOGEAR** Ethernet-2-WiFi Universal Wireless Adapter Wireless Connection is **NOT ACTIVE**

GWU637

Settings saved successfully.

Please press the [Finish] button if you want to apply the settings.

Finish

Site Survey

LAN Interface

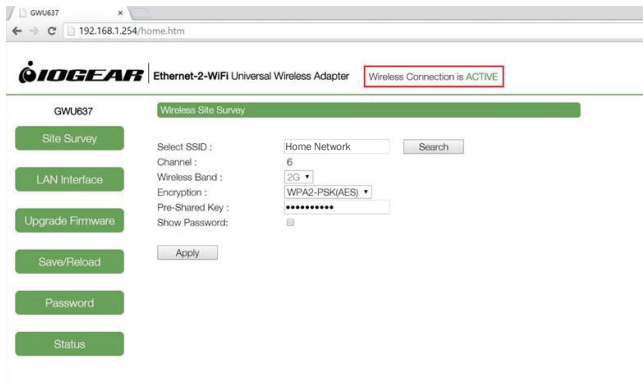
Upgrade Firmware

Save/Reload

Password

Status

15. The adapter will reboot for 90 seconds. During the reboot process, the Wireless Connection status will change to **ACTIVE**.



16. Close your browser and change the network settings on your computer back to DHCP. Refer to steps 4 through 8.
17. Your Ethernet-2-WiFi adapter configuration is complete. Use the included Ethernet cable to connect the adapter to your Ethernet enabled device such as a Blu-Ray player, HDTV or game console.

Note: Make sure to set your Ethernet device's network connection setting to **WIRED** for proper operation.

## Windows 10 Configuration

1. Press and hold down the Windows key then press "X" This will bring up a hidden pull down Menu
2. Select network connections
3. Next Select "Change Adapter Options"

Home

Find a setting

**Network & Internet**

- Status
- Wi-Fi
- Ethernet
- Dial-up
- VPN
- Airplane mode
- Mobile hotspot
- Proxy

**Status**

**Network status**

You're connected to the Internet

If you have a limited data plan, you can make this network a metered connection or change other properties.

Ethernet  
From the last 30 days  
0 MB

Properties Data usage

Show available networks  
View the connection options around you.

**Advanced network settings**

- Change adapter options  
View network adapters and change connection settings.
- Network and Sharing Center  
For the networks you connect to, decide what you want to share.
- Network troubleshooter  
Diagnose and fix network problems.

View hardware and connection properties

Windows Firewall

Network reset

Help from the web

- Finding my IP address
- Troubleshooting network connection issues
- Updating network adapter or driver

Get help

Give feedback

### Ethernet



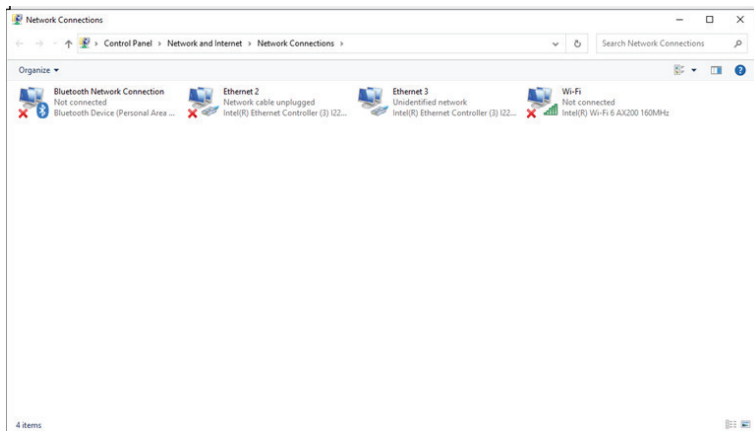
Related settings

- Change adapter options
- Change advanced sharing options
- Network and Sharing Center
- Windows Firewall

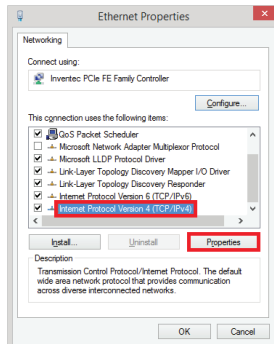
Get help

Give feedback

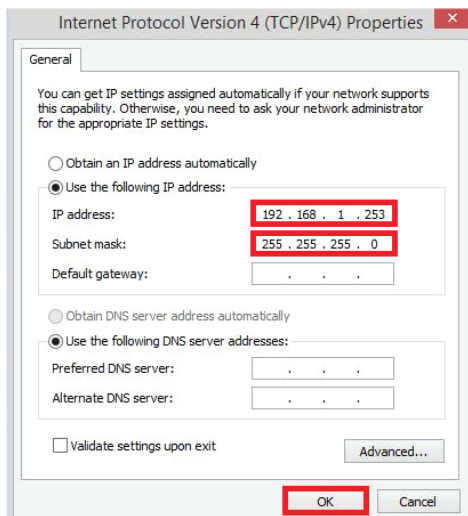
4. Right click on Ethernet and select Properties



5. This will open up the Ethernet properties window . Click to highlight Internet Protocol Version 4 (TCP/IPv4) and select Properties.



6. Choose Use the following IP address. Enter 192.168.1.253 in the IP Address field and 255.255.255.0 as Subnet mask. Click OK to continue.



Make sure you close all network boxes down before going to the next step

7. Open an Internet Browser and enter 192.168.1.254 in the address bar.



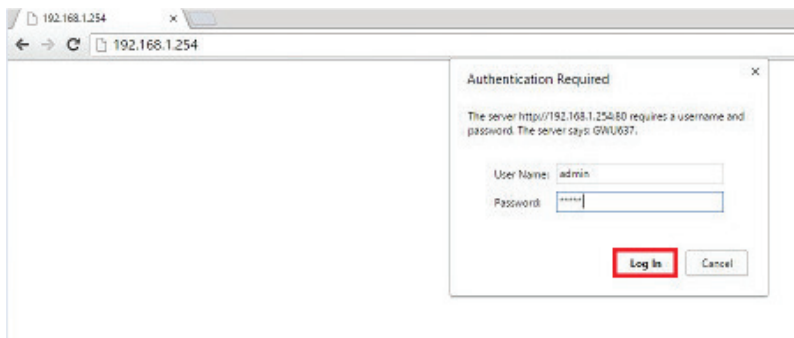


Enter the following factory default User Name and Password:

User Name: admin

Password: admin

Click the Log In button.



The Ethernet-2-WiFi configuration utility will launch in your browser.

8. Next, click Search to select the wireless network to connect the adapter to.

GWU637

192.168.1.254/home.htm

**IOGEAR** Ethernet-2-WiFi Universal Wireless Adapter Wireless Connection is NOT ACTIVE

GWU637 Wireless Site Survey

Site Survey

LAN Interface

Upgrade Firmware

Save/Reload

Password

Status

Select SSID : IOGEAR2g- Search

Channel : 2

Wireless Band : 2G

Encryption : Disable

Apply

The Wireless Site Survey window will open. Select the desired wireless network to connect to and click Done.

Wireless Site Survey - Google Chrome

192.168.1.254/wlsurvey.htm

Please select the wireless network to connect to.

Select	Channel	SSID	BSSID	Encryption	Authentication	Signal	Mode
<input type="radio"/>	6	CA-TEST	74:44:01:35:00:57	AES	WPA2-PSK	96	11b/g/n
<input type="radio"/>	11	ATE&P	88:c7:c8:c8:52:42	WEP	OPEN	48	11b/g/n

Refresh Done

If your wireless network is secured, choose the correct Encryption type from the dropdown menu and enter your network password. Click the Apply button to save settings.

The screenshot shows a web browser window with the address bar displaying "192.168.1.254/home.htm". The page header includes the IOGEAR logo and the text "Ethernet-2-WiFi Universal Wireless Adapter" and "Wireless Connection is NOT ACTIVE". The main content area is titled "Wireless Site Survey" and features a sidebar with buttons: "Site Survey", "LAN Interface", "Upgrade Firmware", "Save/Reload", "Password", and "Status". The "Site Survey" button is highlighted. The main form contains the following fields and controls:

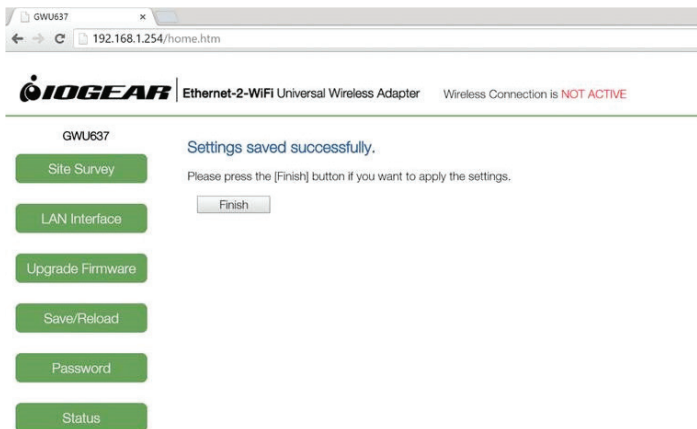
- Select SSID :
- Channel :
- Wireless Band :
- Encryption :
- Pre-Shared Key :
- Show Password : ☐
- 
- 

If your wireless network is secured, choose the correct Encryption type from the dropdown menu and enter your network password. Click the Apply button to save settings.

The screenshot shows the same web browser window, but the status has changed to "Wireless Connection is ACTIVE". The "Wireless Site Survey" page is still active, and the sidebar buttons remain the same. The main form fields are now populated with different values:

- Select SSID :
- Channel :
- Wireless Band :
- Encryption :
- Pre-Shared Key :
- Show Password : ☐
- 
-

9. Click the Finish button to reflect the updated settings.



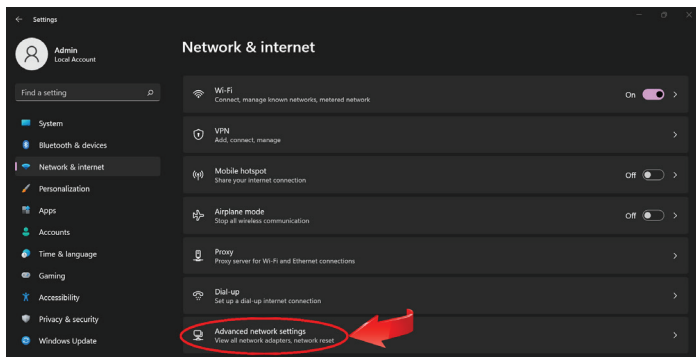
Close your browser and change the network settings on your computer back to DHCP.

Your Ethernet-2-WiFi adapter configuration is complete. Use the included Ethernet cable to connect the adapter to your Ethernet enabled device such as a Blu-Ray player, HDTV or game console.

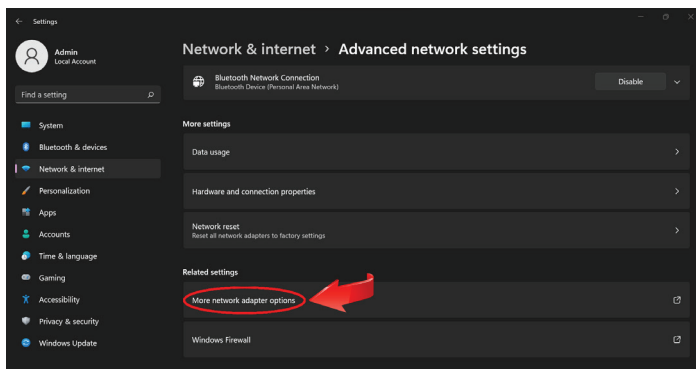
Note: Make sure to set your Ethernet device's network connection setting to WIRED for proper operation

## Windows 11 Configuration

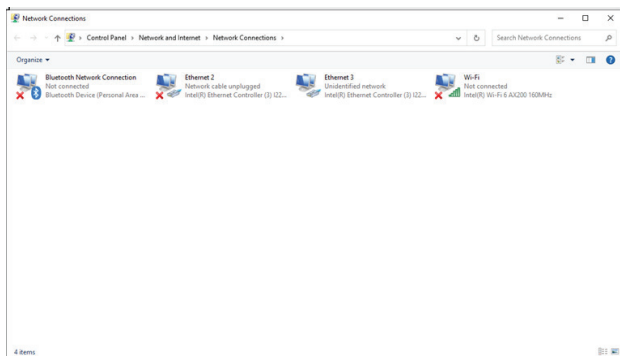
1. Press and hold down the Windows key then press "X" This will bring up a hidden pull down Menu
2. Select network connections
3. Next Select "Advanced network settings"



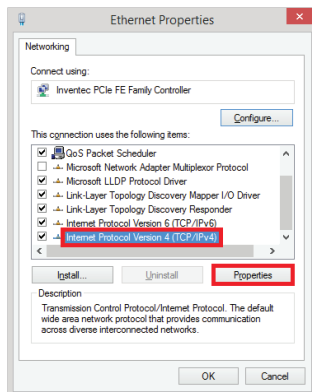
4. Scroll down and click on "More network adapter options"



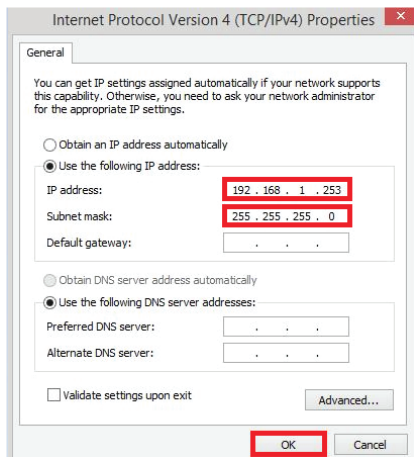
5. Right click on Ethernet and select Properties



6. This will open up the Ethernet properties window . Click to highlight Internet Protocol Version 4 (TCP/IPv4) and select Properties.



7. Choose Use the following IP address. Enter 192.168.1.253 in the IP Address field and 255.255.255.0 as Subnet mask. Click OK to continue.



Make sure you close all network boxes down before going to the next step

8. Open an Internet Browser and enter 192.168.1.254 in the address bar.

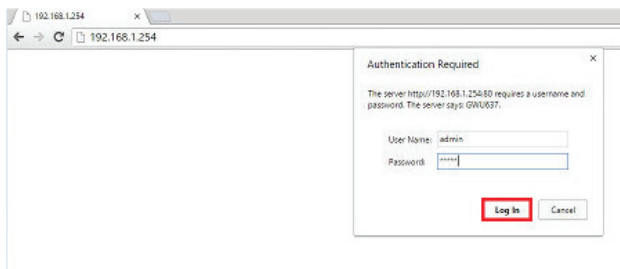


Enter the following factory default User Name and Password:

User Name: admin

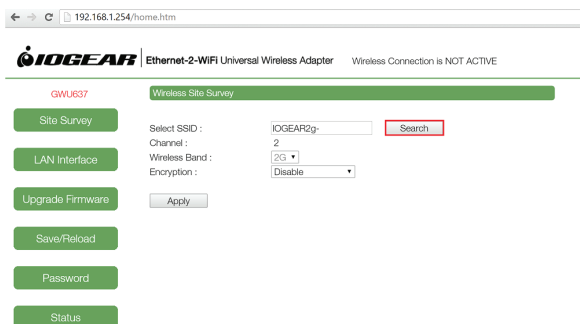
Password: admin

Click the Log In button.



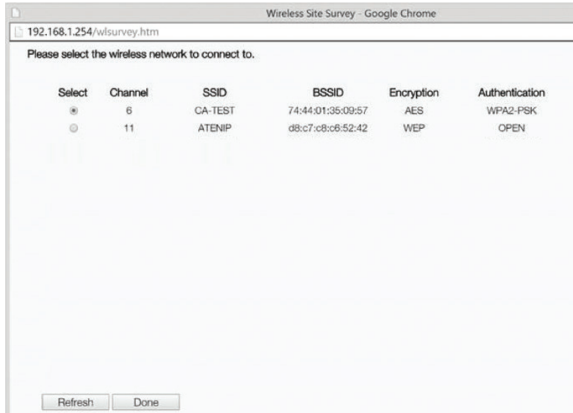
The Ethernet-2-WiFi configuration utility will launch in your browser.

9. Next, click Search to select the wireless network to connect the adapter to.





network to connect to and click Done.



Wireless Site Survey - Google Chrome

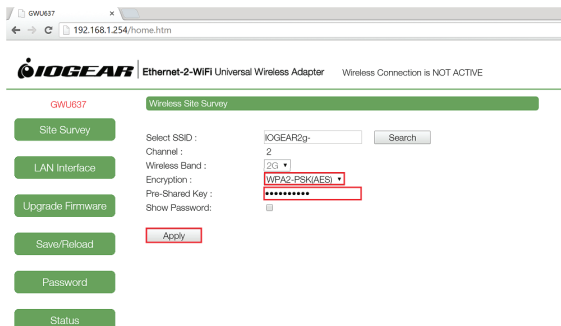
192.168.1.254/wlsurvey.htm

Please select the wireless network to connect to.

Select	Channel	SSID	BSSID	Encryption	Authentication
<input type="radio"/>	6	CA-TEST	74:44:01:35:09:57	AES	WPA2-PSK
<input type="radio"/>	11	ATENIP	d8:c7:c8:c6:52:42	WEP	OPEN

Refresh Done

If your wireless network is secured, choose the correct Encryption type from the dropdown menu and enter your network password. Click the Apply button to save settings.



IOGEAR Ethernet-2-WiFi Universal Wireless Adapter Wireless Connection is NOT ACTIVE

GWU837 Wireless Site Survey

Site Survey

LAN Interface

Upgrade Firmware

Save/Reload

Password

Status

Select SSID : JOGEAR2g Search

Channel : 2

Wireless Band : 2G

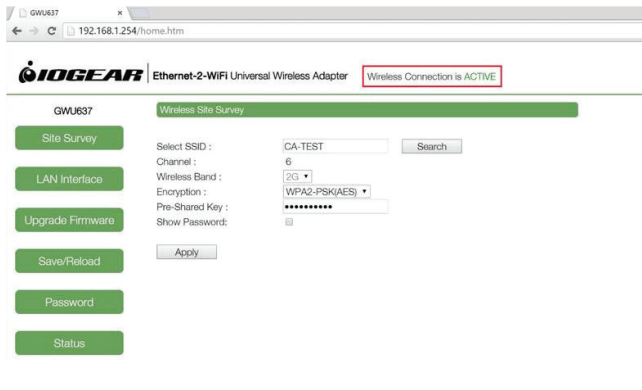
Encryption : WPA2-PSK(AES)

Pre-Shared Key : \*\*\*\*\*

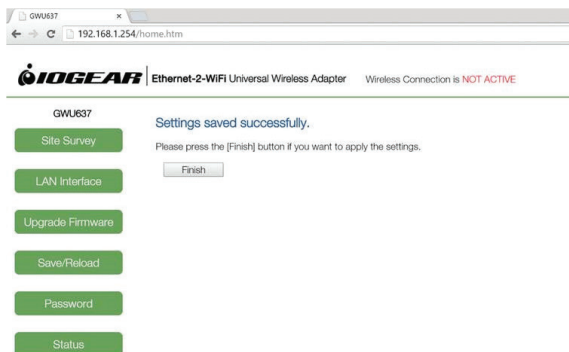
Show Password: ☐


Apply

The adapter will reboot for 90 seconds. During the reboot process, the Wireless Connection status will change to ACTIVE.



10. Click the Finish button to reflect the updated settings.





Close your browser and change the network IPv4 settings on your computer back to DHCP (obtain an IP address automatically) as shown on step 7.

Your Ethernet-2-WiFi adapter configuration is complete. Use the included Ethernet cable to connect the adapter to your Ethernet enabled device such as a Blu-Ray player, HDTV or game console.

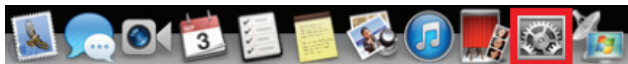
Note: Make sure to set your Ethernet device's network connection setting to WIRED for proper operation

## Wireless Configuration - MAC

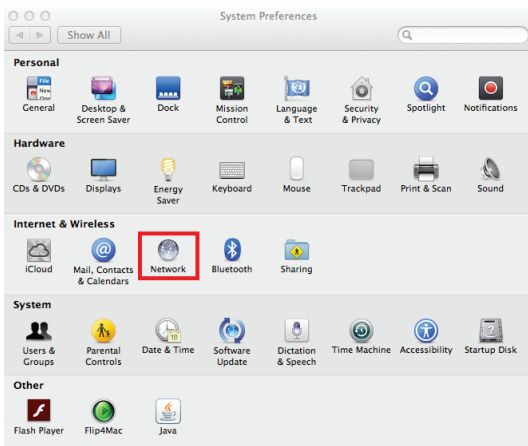
1. Start by disabling your MAC's wireless connection.
2. Next, power on your Ethernet-2-WiFi adapter using either of the following methods:
  - Connect the included micro-USB cable to the USB power adapter and plug into an available power outlet. Connect the micro-USB cable to the Ethernet-2-WiFi adapter.
  - Connect the included micro-USB cable to the Ethernet-2-WiFi adapter and plug into an available USB port on your computer.

Note: It will take approximately 20 - 30 seconds to complete the boot-up sequence. When complete, the WLAN LED will blink to show it's ready to be configured.

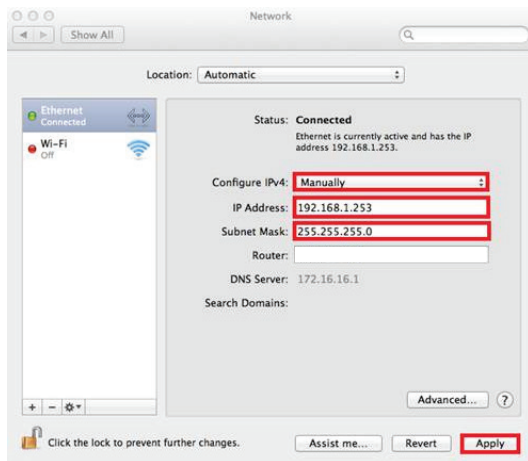
3. Connect one end of the included Ethernet cable to the Ethernet-2-WiFi adapter. Connect the other end of the Ethernet cable into the Ethernet port on your MAC.
4. Open **System Preferences** from the Dock.



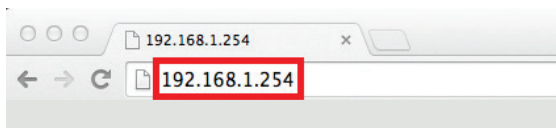
5. Select **Network**.



6. Select **Ethernet** in the left pane and select **Manually** from the Configure IPv4 dropdown menu. Enter **192.168.1.253** in the **IP Address** field and **255.255.255.0** as **Subnet Mask**. Click the **Apply** button.



7. Open an Internet Browser and enter **192.168.1.254** in the address bar.

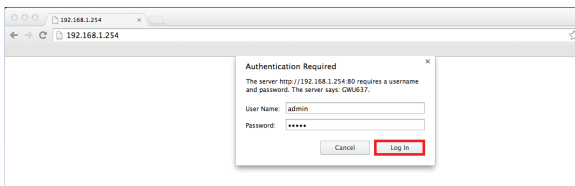


8. Enter the following factory default User Name and Password:

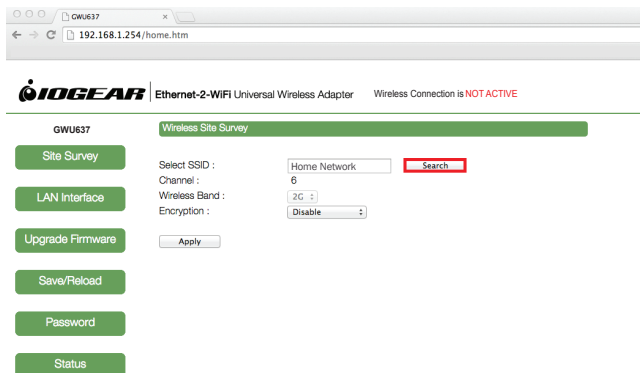
User Name: **admin**

Password: **admin**

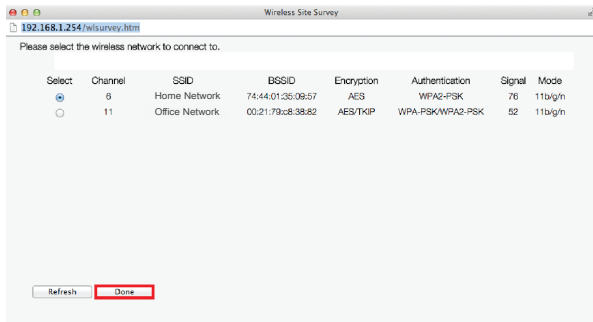
Click the **Log In** button.



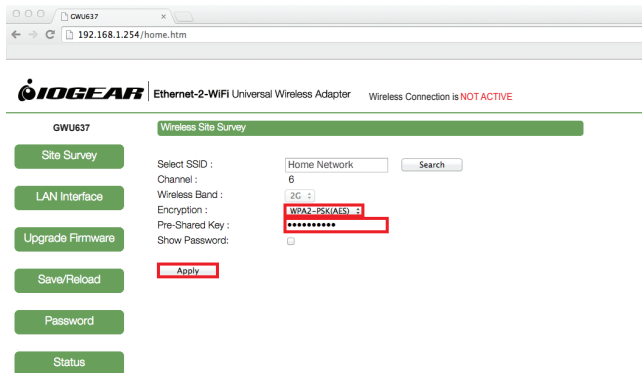
9. The Ethernet-2-WiFi configuration utility will launch in your browser. Next, click **Search** to select the wireless network to connect the adapter to.



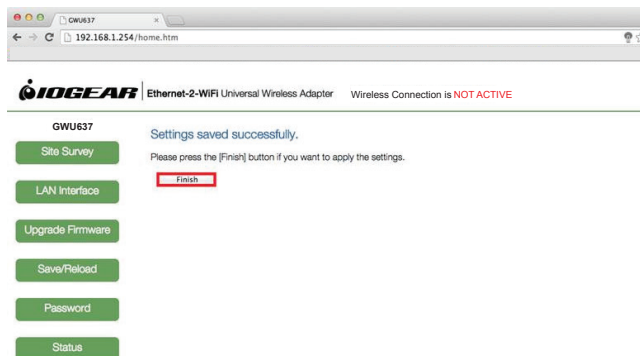
10. The Wireless Site Survey window will open. Select the desired wireless network to connect to and click **Done**.



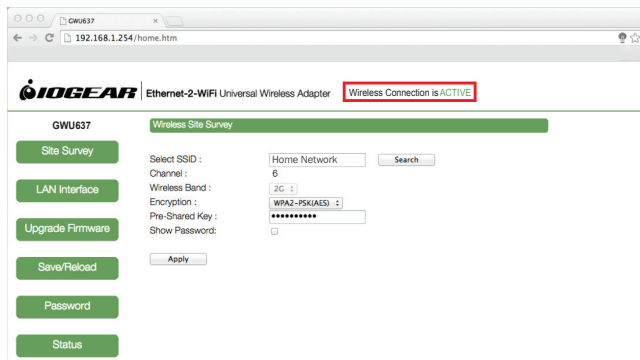
11. If your wireless network is secured, choose the correct Encryption type from the dropdown menu and enter your network password. Click the **Apply** button to save settings.



12. Settings will save. Click the **Finish** button to reflect the updated settings.



13. The adapter will reboot for 90 seconds. During the reboot process, the Wireless Connection status will change to **ACTIVE**.





14. Close your browser and change the network settings on your computer back to DHCP. Refer to steps 4 through 6.
15. Your Ethernet-2-WiFi adapter configuration is complete. Use the included Ethernet cable to connect the adapter to your Ethernet enabled device such as a Blu-Ray player, HDTV or game console.

Note: Make sure to set your Ethernet device's network connection setting to **WIRED** for proper operation.

## Compliance Information

### Federal Communication Commission Interference Statement

This device complies with Part 15 of the FCC Rules. Operation is subject to the following two conditions:

- (1) This device may not cause harmful interference, and
- (2) this device must accept any interference received, including interference that may cause undesired operation.

This equipment has been tested and found to comply with the limits for a Class B digital device, pursuant to Part 15 of the FCC Rules. These limits are designed to provide reasonable protection against harmful interference in a residential installation. This equipment generates, uses and can radiate radio frequency energy and, if not installed and used in accordance with the instructions, may cause harmful interference to radio communications. However, there is no guarantee that interference will not occur in a particular installation. If this equipment does cause harmful interference to radio or television reception, which can be determined by turning the equipment off and on, the user is encouraged to try to correct the interference by one of the following measures:

- Reorient or relocate the receiving antenna.
- Increase the separation between the equipment and receiver.
- Connect the equipment into an outlet on a circuit different from that to which the receiver is connected.
- Consult the dealer or an experienced radio/TV technician for help.

FCC Caution: Any changes or modifications not expressly approved by the party responsible for compliance could void the user's authority to operate this equipment.

This transmitter must not be co-located or operating in conjunction with any other antenna or transmitter.

FOR MOBILE DEVICE USAGE (>20cm/low power)

**Radiation Exposure Statement:**

This equipment complies with FCC radiation exposure limits set forth for an uncontrolled environment. This equipment should be installed and operated with minimum distance 20cm between the radiator & your body.

FOR COUNTRY CODE SELECTION USAGE (WLAN DEVICES)

Note: The country code selection is for non-US model only and is not available to all US model. Per FCC regulation, all WiFi product marketed in US must fixed to US operation channels only.

**CE Compliance**

This device has been tested and found to comply with the following European Union directives: Electromagnetic Capability (2004/108/EC), Low Voltage (2006/95/EC) and R&TTED (1999/5/EC).

**IC Compliance**

This device complies with Industry Canada license-exempt RSS standard(s). Operation is subject to the following two conditions:

- (1) This device may not cause interference,  
and
- (2) this device must accept any interference, including interference that may cause undesired operation of the device.

IC ID: 8740A (GWU637)

## Limited Warranty

### Warranty Information

This product carries a 1 Year Limited Warranty. For the terms and conditions of this warranty, please go to <http://www.iogear.com/support/warranty>

Register online at <http://www.iogear.com/register>

Important Product Information

Product Model \_\_\_\_\_

Serial Number \_\_\_\_\_

## Contact

### WE'RE HERE TO HELP YOU! NEED ASSISTANCE SETTING UP THIS PRODUCT?

Make sure you:

1. Visit [www.iogear.com](http://www.iogear.com) for more product information
2. Visit [www.iogear.com/support](http://www.iogear.com/support) for live help and product support

19641 Da Vinci,  
Foothill Ranch, CA 92610  
[www.iogear.com](http://www.iogear.com)  
[iogear.custhelp.com](mailto:iogear.custhelp.com)  
[support@iogear.com](mailto:support@iogear.com)

