



User Manual

2/4-port USB Peripheral Sharing Switch

GUB231/GUB431

PART NO. M1119-a/M1120-a

Table of Contents

Package Contents	4	Trouble-Shooting Guide	28
Overview	5	Specifications	30
System Requirements	6	Federal Communications Commission (FCC) Statement	32
Device Overview	7	CE Statements	33
Hardware Installation	9	Limited Warranty	34
Operation – Manual Switch	12	Contact	35
Operation – Automatic Switch Windows OS	13		
Operation – Automatic Switch Mac OS X	20		

Package Contents

GUB231

- 1 x GUB231- 2-port USB 2.0 Peripheral Sharing Switch
- 1 x 6ft USB Type A to Type B Cable
- 1 x User Manual
- 1 x Warranty/Registration Card

GUB431

- 1 x GUB431-4-port USB 2.0 Peripheral Sharing Switch
- 1 x 6ft USB Type A to Type B Cable
- 1 x User Manual
- 1 x Warranty/Registration Card

Overview

- Enables two (GUB231) or four (GUB431) computers to share one USB peripheral device
- Automatically* switch from one computer to another when connecting to a USB printer or multi-function printer
- Simply press a button to switch a USB device between computers - No software installation required
- Active-port LED indicators to show which computer has USB access
- Switch lock function to ensure data access consistency
- USB 2.0 support with data transfer rate up to 480Mbps and USB 1.1 backward compatible
- Eliminates cable clutter and no external power supply needed

*Automatic switch function requires installation of the included software. Please refer to page 18 for Windows OS operation and page 26 for Mac OS operation.

System Requirements

Hardware Requirement

- Computer with a USB-A port

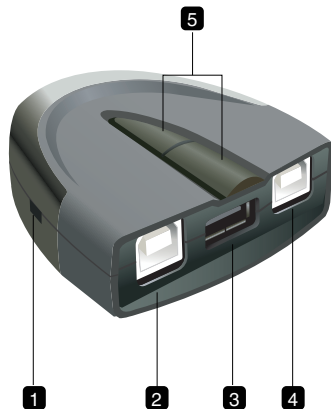
Supported Operating Systems

- Windows Windows 7/8.1/10
- Mac OS X 10.6 and above

Device Overview

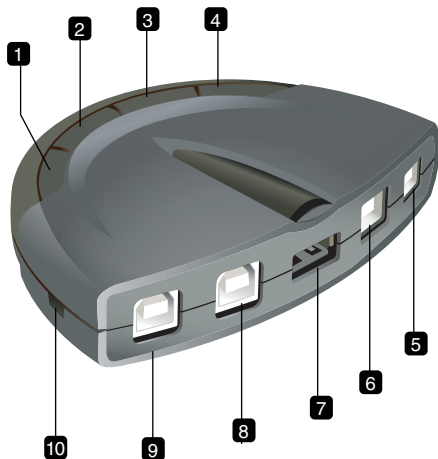
GUB231

1. Sound effect on/off
2. Console port 2
3. USB device port
4. Console port 1
5. Port Selection button



GUB431

1. Port Selection button 4
2. Port Selection button 3
3. Port Selection button 2
4. Port Selection button 1
5. Console port 1
6. Console port 2
7. USB device port
8. Console port 3
9. Console port 4
10. Sound effect on/off



Hardware Installation

Note: Make sure that the power to any device that you are connecting to is turned off.

1. Use the included USB cable and connect the Type A connector to any available Type A port on the GUB231 or GUB431, and connect the other end of the cable to any available USB port on your computer.
2. If you want to connect more than one computer to GUB231 or GUB431, you will need to purchase additional USB Type A to Type B cables and repeat Step 1.



3. Connect the USB Type A connector of the USB cable from your USB device to the Type A port on the GUB231 or GUB431.

GUB231



GUB431

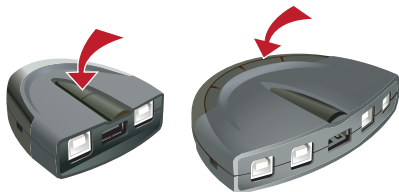


Lock

To lock the USB device connection with specific computer, press and hold the port selection button for two seconds, or until the orange LED lights up.

Unlock

To unlock the USB device connection with specific computer, press and hold the port selection button for one second, or until the orange LED turns off.



Operation – Manual Switch

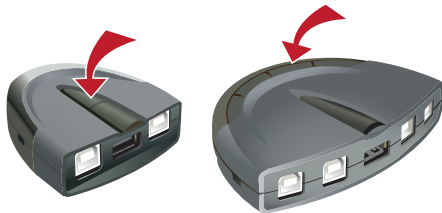
Note: Software installation is not mandatory for the USB 2.0 Peripheral Sharing Switch to function. The device supports manual operation. Manual operation and software-based operation operate independently; commands from one will not override the other.

For GUB231:

To switch the connection to the USB device between the two computers, press the port selection button located on the top center of the Sharing Switch. The selected port LED will flash and the Sharing Switch will beep. After four seconds, the flashing will stop and the LED will become steady, the port switch is completed successfully.

For GUB431:

To switch the connection to the USB device between the four computers, press the corresponding port button located on the top of the Sharing Switch. The selected port button LED will flash and the Sharing Switch will beep. After four seconds, the flashing will stop and the LED will become steady, then port switch is completed successfully.



Operation – Automatic Switch Windows OS

1. Please go to www.LOGEAR.com/support/dm/driver/GUB231 and download the latest driver

GUB231

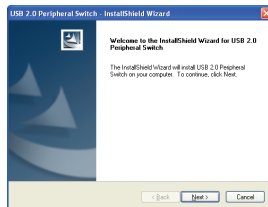
Mac Software for 10.14 works with 10.15

OS	Type
Mac OS 10.13 (High Sierra)	Software
Mac OS 10.14.x (Mojave)	
Mac OS 10.15 (Catalina)	
Mac OS 11x (Big Sur)	
Windows 10 32-bit	Driver/Software
Windows 10 64-bit	
Windows 7 32-bit	
Windows 7 64-bit	
Windows 8.1 32-bit	
Windows 8.1 64-bit	
Mac OS 10.6.x	Software
Mac OS 10.7.x	
Mac OS 10.8.x	
Mac OS 10.9.x	
Mac OS 10.10	

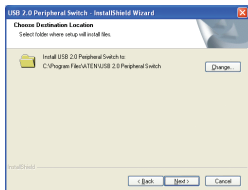
2. Run the downloaded zip drive to begin loading the software
3. Double click on Setup

Name	Type
Setup	Application
USB2.0 Peripheral Sharing Switch	Application

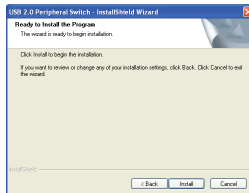
4. The software will start loading, click on **Next** to continue.



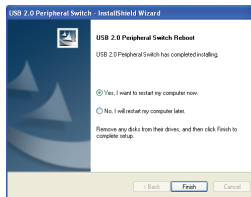
5. You can install the software into a specific folder of your choice, or just use the default folder and click on **Next** to continue.



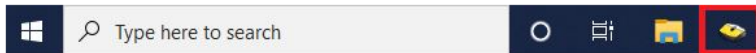
6. Click on **Install** to continue.



7. Click on **Finish** to restart your computer when the installation is completed.



Once software installation completes, you will find the utility icon located on your desktop

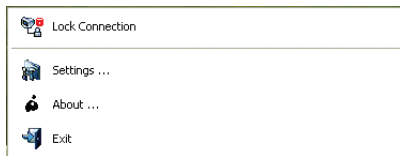


This icon on your taskbar will display in four different colors to indicate different status of your GUB231/431, below table is the definition on the various color.

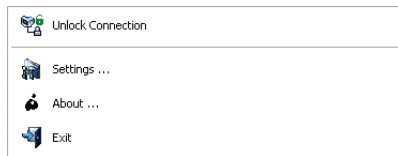
Color	Status
Green	Locked on local computer
Yellow	Connected to local computer
Red	Peripheral device not connected
Gray	Disconnected or busy

Lock / Unlock Connection

1. Click on the utility icon on the taskbar and a menu will appear. If your computer is the one that's currently connecting to the USB device, then you can choose to lock the connection by selecting **Lock Connection** from the menu.



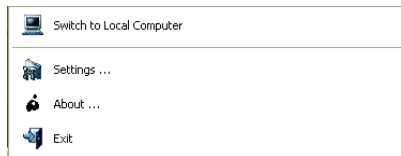
2. If you want to unlock the connection so other computers can connect to the USB device, then click on the utility icon on the taskbar of the computer that's currently connected to the USB device, and select **Unlock Connection**.



Switch to Local Computer

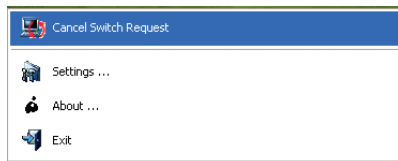
Note: In order to switch the connection of the USB device to another computer, you must unlock any active connection to the USB device from the computer that is currently connected to the USB device.

If you want to switch the connection of the USB device from one computer to another, you can click on the utility icon on the taskbar and select Switch to Local Computer.



Cancel Switch Request

If you have sent a request to switch the connection of the USB device and the USB device appears to be busy, your request is queued. To cancel the request, click on the utility icon on the taskbar and select **Cancel Switch Request**.



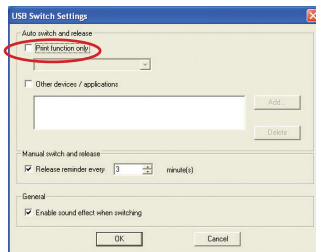
Auto Printer Sharing

Note: In order for the auto printer sharing function to work, you must unlock any connection that is currently locked by manual or software operation. Refer to P.12 for instructions on how to unlock the connection by manual operation, and P.16 for software operation.

1. Click on the utility icon located on the taskbar and select **Settings**.



2. Check the box **Print function only**, and select the correct printer from the drop-down menu. Click **OK** when finished.

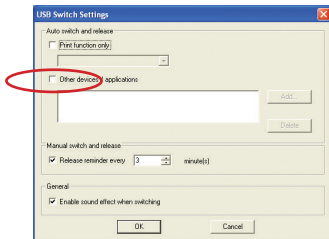


Note: If your printer does not show up on the drop-down menu, try to reinstall your printer driver. If your printer is a multifunction printer and you want to use its scan function, you must also enable the Other devices / applications and click on Add. For detail information, please see Trouble-Shooting Guide section of this user manual.

Other devices / applications

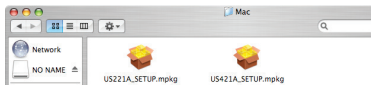
If you want to enable the auto switch function on your scanner or the scanning function on your multifunction printer, check the box for **Other devices / applications** then click on **Add**. Then you will need to browse through your computer's system files and find the applicable application program. Click on **OK** when finished.

Note: Be sure to search and select the full application path. A desktop shortcut will not work. Once a USB device and its application have been associated with the Auto Switch function, the USB 2.0 Peripheral Sharing Switch will automatically take control of the attached USB device when the utility application is opened. USB 2.0 Peripheral Sharing Switch will release the control when the utility application is closed.

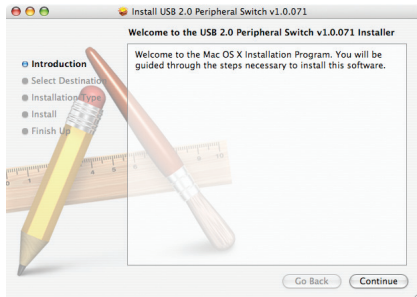


Operation – Automatic Switch Mac OS X

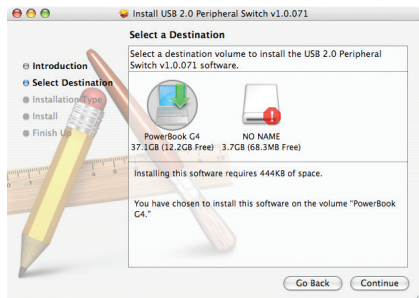
1. Please go to www.IOGEAR.com/support/dm/driver/GUB231 and download the latest driver.
2. Run the downloaded zip drive to begin loading the software.
3. You will see two installation package files in the Mac folder. US221A_SETUP.mpkg is the setup file for GUB231, and US421A_SETUP.mpkg is the setup file for GUB431. Double click on the one that is for the product you purchased.



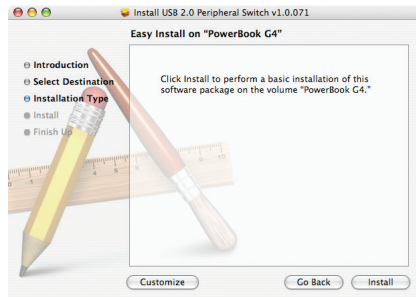
4. Click on **Continue** to begin the installation.



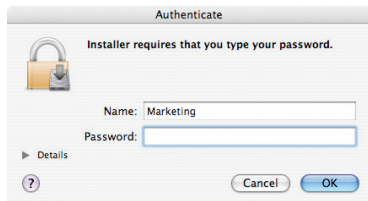
5. Select your destination volume to install the driver and click on **Continue** to proceed with installation.



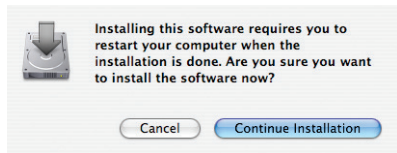
6. Click on **Install** to continue.



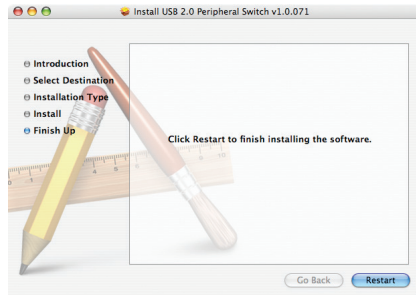
7. You will be prompted by the Authenticate window, please type in the correct user name and password of the administrator account and click on **OK** to continue.

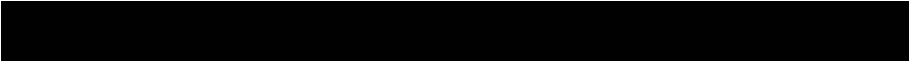


Click on **Continue** Installation to continue.



8. Click on **Restart** to restart your computer after the installation completes





Once the software installation completed, you will find the utility icon located on the top taskbar and also available in your application list.

This icon on your taskbar will display in four different colors to indicate different status of your GUB231/431, below table is the definition on the various color.

Color	Status
Green	Locked on local computer
Yellow	Connected to local computer
Red	Peripheral device not connected
Gray	Disconnected or busy

Lock / Unlock Connection

1. Click on the utility icon on the taskbar and a menu will appear. If your computer is the one that's currently connecting to the USB device, then you can choose to lock the connection by selecting **Lock Connection** from the menu.



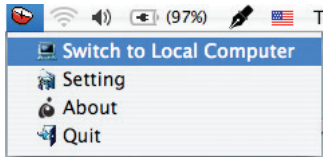
2. If you want to unlock the connection so other computers can connect to the USB device, then click on the utility icon on the taskbar of the computer that's currently connected to the USB device, and select **Unlock Connection**.



Switch to Local Computer

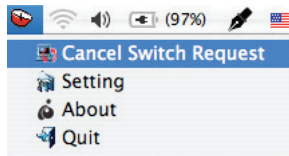
Note: In order to switch the connection of the USB device to another computer, you must unlock any active connection to the USB device from the computer that is currently connected to the USB device.

If you want to switch the connection of the USB device from one computer to another, you can click on the utility icon on the taskbar and select Switch to Local Computer.



Cancel Switch Request

If you have sent a request to switch the connection of the USB device and the USB device appears to be busy, your request is queued. To cancel the request, click on the utility icon on the taskbar and select Cancel Switch Request.



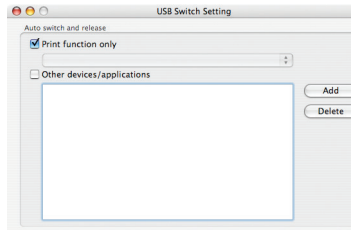
Auto Printer Sharing

Note: In order for the auto printer sharing function to work, you must unlock any connection that is currently locked by manual or software operation. Refer to P.12 for instructions on how to unlock the connection by manual operation, and P.24 for software operation.

1. Click on the utility icon located on the top taskbar and select Settings.



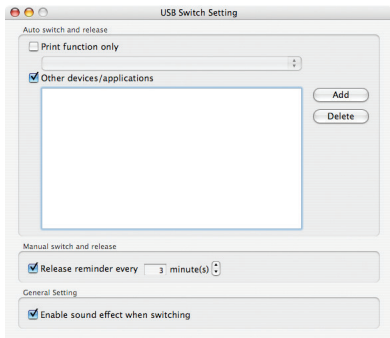
2. Check the box Print function only, and select the correct printer from the drop-down menu. Close window when finished.



Note: If your printer does not show up on the drop-down menu, try to reinstall your printer driver. If your printer is a multifunction printer and you want to use its scan function, you must also enable the Other devices / applications and click on Add. For detail information, please see Trouble-Shooting Guide section of this user manual.

Other devices / applications

If you want to enable the auto switch function on your scanner or the scanning function on your multifunction printer, check the box for Other devices / applications then click on Add. Then you will need to browse through your computer's system files and find the applicable application program. Close window when finished.



Note: Be sure to search and select the full application path. A desktop shortcut will not work. Once a USB device and its application have been associated with the Auto Switch function, the USB 2.0 Peripheral Sharing Switch will automatically take control of the attached USB device when the utility application is opened. USB 2.0 Peripheral Sharing Switch will release the control when the utility application is closed.

Trouble-Shooting Guide

Q: The USB 2.0 Peripheral Sharing Switch behaves erratically, what can I do to correct this?

A: Disconnect all USB cables from the USB 2.0 Peripheral Sharing Switch then reconnect them.

Q: My printer does not appear in the drop-down menu, what should I do?

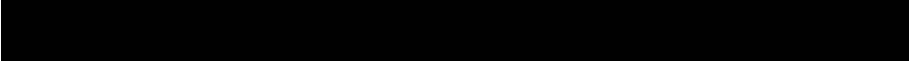
A: If your printer does not show up in the drop-down menu after you install the software, try to reinstall your printer drive again following the procedures provided by your printer's user manual. After you finish reinstalling the printer driver, restart the software and your printer should be listed in the drop-down menu.

Q: My printer's print monitoring program does not load up or respond and there is an error message about the print job can not be completed. What should I do to complete the print job?

A: Disable the "Print function only" in the software, and operates the USB 2.0 Peripheral Sharing Switch by pressing the buttons to switch between different computers.

Q: The Lock / Unlock function does not work. What should I do?

A: Try to disconnect all USB cables and reconnect them. This will reset the USB 2.0 Peripheral Sharing Switch.



Q: The “Print function only” feature does not work. What should I do?

A: Try to restart your computer, disconnect all USB cables and reconnect them. If it still does not work, then try to reinstall the USB 2.0 Peripheral Sharing Switch utility software.

Q: The USB 2.0 Peripheral Sharing Switch does not release control of other devices that are configured in the Other devices / applications, what should I do?

A: Try to manually close the utility software by pressing Ctrl + Alt + Delete.

Specifications

Function	GUB231
Computer Connections	
Direct	USB Type B to Type A
Connectors	
Console	1
Device Side	2
Environment	
Humidity	0-80% RH
Operation Temperature	41 to 104 degree Fahrenheit
Storage Temperature	-4 to 140 degree Fahrenheit
LEDs	
Port Status	Green - Online / Orange - Locked
Host Status	Orange - Online
Operating System Support	Windows 7/8.1/10; Mac OS X 10.6 and above
Power Consumption	DC 5V, 2.5W
Power Supply	USB Bus powered

Function GUB431

Computer Connections

Direct USB Type B to Type A

Connectors

Console 1

Device Side 4

Environment

Humidity 0-80% RH

Operation Temperature 41 to 104 degree Fahrenheit

Storage Temperature -4 to 140 degree Fahrenheit

LEDs

Port Status Green - Online / Orange - Locked

Host Status Orange - Online

Operating System Support Windows 7/8.1/10; Mac OS X Mac OS X 10.6 and above

Power Consumption DC 5V, 2.5W

Power Supply USB Bus powered

Federal Communications Commission (FCC) Statement

15.21

You are cautioned that changes or modifications not expressly approved by the part responsible for compliance could void the user's authority to operate the equipment.

15.105(b)

his equipment has been tested and found to comply with the limits for a Class B digital device, pursuant to part 15 of the FCC rules. These limits are designed to provide reasonable protection against harmful interference in a residential installation. This equipment generates, uses and can radiate radio frequency energy and, if not installed and used in accordance with the instructions, may cause harmful interference to radio communications. However, there is no guarantee that interference will not occur in a particular installation. If this equipment does cause harmful interference to radio or television reception, which can be determined by turning the equipment off and on, the user is encouraged to try to correct the interference by one or more of the following measures:

- Reorient or relocate the receiving antenna.
- Increase the separation between the equipment and receiver.
- Connect the equipment into an outlet on a circuit different from that to which the receiver is connected.
- Consult the dealer or an experienced radio/TV technician for help.

CE Statements

This device has been tested and found to comply with the requirements set up in the council directive on the approximation of the law of member states relating to EMC Directive 89/336/EEC, Low Voltage Directive 73/23/EEC and R&TTE Directive 99/5/EC.

The product has been approved for LVD and covered the following countries:
Belgium, Denmark, France, Germany, Italy, Portugal, U.K., Spain, Sweden

Limited Warranty

IN NO EVENT SHALL THE DIRECT VENDOR'S LIABILITY FOR DIRECT, INDIRECT, SPECIAL, INCIDENTAL OR CONSEQUENTIAL DAMAGES RESULTING FROM THE USE OF THE PRODUCT, DISK, OR ITS DOCUMENTATION EXCEED THE PRICE PAID FOR THE PRODUCT.

The direct vendor makes no warranty or representation, expressed, implied, or statutory with respect to the contents or use of this documentation, and especially disclaims its quality, performance, merchantability, or fitness for any particular purpose. The direct vendor also reserves the right to revise or update the device or documentation without obligation to notify any individual or entity of such revisions, or updates. For further inquiries please contact IOGEAR.

Contact

IOGEAR

P: 949.453.8782

F: 949.453.8785

Visit us at: www.iogear.com

