

Warranty

WE'RE HERE TO HELP YOU!
NEED ASSISTANCE SETTING UP THIS PRODUCT?

Make sure you:
1. Use the live chat at www.iogear.com to try and solve any issues you may be having with the product
2. Visit the Tech Info Library/FAQ on www.iogear.com (under the Support tab)
3. Call the 24/7 tech support line at 1-866-946-4327 (U.S. only) or 949-453-8782

Warranty Information
This product carries a 3 Year Limited Warranty. For the terms and conditions of this warranty, please go to <http://www.iogear.com/support/warranty> or call 1-866-946-4327

Register online at <http://www.iogear.com/register>

Important Product Information
Product Model _____
Serial Number _____

Contact

Toll Free 866-9-IOGEAR (USA)
Phone: 949-453-8782
23 Hubble
Irvine, CA 92618 USA
www.iogear.com
support@iogear.com



About Us

- FUN**
IOGEAR offers connectivity solutions that are innovative, fun, and stylish, helping people enjoy daily life using our high technology products.
- GREEN**
IOGEAR is an environmentally conscious company that emphasizes the importance of conserving natural resources. The use of our technology solutions helps reduce electronic waste.
- HEALTH**
IOGEAR supports healthy and fit lifestyles. By integrating products with the latest scientific developments, IOGEAR's solutions enhance the life of end-users.



© 2008 IOGEAR, INC.

Quick Start Guide
56-in-1 Memory Card Reader/Writer

GFR281
PART NO. Q1314

Package Contents

- 1 X 56-in-1 Memory Card Reader/Writer
- 1 X USB Cable (Type A – mini B)
- 1 X Quick Start Guide

If any of the items is missing or damaged, please contact us immediately.

System Requirements

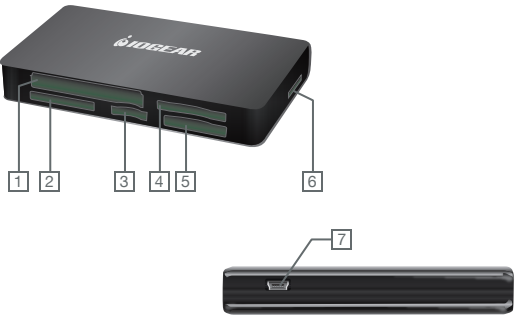
For PC Users
Windows 7, Windows 8.1 and Windows 10
Available USB Port (USB 2.0 port for Hi-Speed mode)

For Mac Users
Mac OS 10.1.2 or above
Available USB Port (USB 2.0 port for Hi-Speed mode)

Supply of this implementation of TPL's CORE Flash technology does not convey a license nor imply a right under any patent, or any other industrial or intellectual property right of TPL, to use this implementation in any finished end-user or ready-to-use final product. You are hereby notified that a license for such use is required from TPL.
Contact: coreflash@alliacense.com

Introduction

Start Here!



- 1. Compact Flash/Micro Drive**
 - CF-Type I
 - CF-Type II
 - CF-Ultra II
 - Micro Drive
 - CF-Pro II
 - CF-Extreme
 - CF-Extreme III
 - CF-PSP II
 - CF-Supper
 - CF-Ultra X
- 2. Olympus DC Card**
 - Olympus DC Card**
 - Olympus DC Card(M)**
 - Olympus DC Card (H)**
- 3. M2**
 - Memory Stick Micro (M2)**

- 4. MMC/SD**
 - SD
 - SDHC
 - SD-Pro
 - SD-Pleomax
 - SD-Pro C
 - SD-Ultra II
 - SD-Ultra II Plus
 - SD-Extreme III
 - SD-Ultra X
 - SD-Turbo
 - SD-Supper
 - SD Max
 - Mini SD* **
 - Mini SD-Pro* **
 - Mini SD-Pleomax* **
 - MMC
 - MMC-Pleomax
 - MMC Pro
 - HS-MMC
 - MMC Plus
 - MMC-Plus Turbo
 - RS MMC
 - RS MMC-Pleomax
 - RS MMC-Speed
 - RS MMC-Max
 - MMC Mobile
 - MMC Mobile-ProC
 - MMC Mobile-Pocketnet
 - MMC Micro***
- 5. Memory Stick**
 - MS
 - MS-Magic Gate
 - MS-PRO Magic Gate
 - HS-MS-PRO Magic Gate
 - MS-DUO
 - MS DUO Magic Gate
 - MS-PRO Duo
 - HS-MS-PRO Duo
 - HS-MS-PRO Duo Magic Gate
 - MS-PRO Duo-PSP
 - MS-PRO Duo-Gaming
 - Memory Stick
- 6. Micro SD**
 - Micro SD
 - T-Flash
- 7. Hi-Speed USB 2.0 Type mini-B port (Female)**
 - *Insert Mini SD into the left side of slot [4]
 - **Insert cards with contacts facing up
 - *** Adapter required

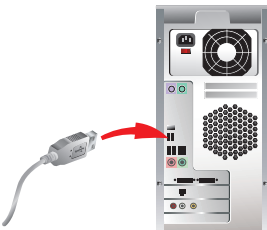
Hardware Installation

Note: Before you begin, please make sure that the power to the device and your computer has been turned off.

Step 1.
Plug the Hi-Speed USB 2.0 Cable (Type mini-B connector) into the Memory Card Reader/Writer.



Step 2.
Plug the Hi-Speed USB 2.0 Cable (Type A connector) into the computer's USB 2.0 port.



Step 3.
Turn on the computer

Step 4.
Once the computer has finished booting up, insert the desired media card.

Step 5.
To view the stored information/images on your memory cards, go to "My Computer" (for PC users) or your desktop (for Mac users).

Remember, you may view the contents of more than one memory card at a time. However, MMC/SD [4] and Micro SD [6] slots will show as one Removable Disk; M2 [3] and MS [5] slots will show as one Removable Disk. Users cannot use both slots at the same time.

Warning: Formatting your card will permanently erase all your data/images

Note: Properly insert your media into the Memory Card Reader/Writer. The module is keyed so that it will only fit into the socket in one direction. If you insert the media and it does not easily slide all the way into the socket, remove and reverse, "rotate," the position of the media, and reinsert into the socket.