



User Manual

UpStream™ Pro Dual Video Capture Adapter

GUV322

PART NO. M1634

Table of Contents

User Notice.....	4
About this Manual.....	5
Conventions	6

Introduction

Overview	7
Package Contents	8
Features	8
Planning the Installation	9
Supported Operating System and Requirements.....	9
Components	10
Front View	10
Rear View	11

Hardware Setup

Mounting the Camera Mount Adapter	12
Optional Rack Mounting	12
Connecting the Dual Video Capture Adapter Unit	13
IOGEAR UpStream Essentials App Installation	15
Phone Tray	15
Software	16
PC	16
Android Smartphone	16

Livestream / Record Setup

Livestream / Record Platform	17
Discovering Dual Video Capture Adapter on your System.....	17
Mac Operating System.....	17
Windows Operating System	20
Video and Audio Setup.....	22
Using the USB Cables.....	26
HDCP Switching.....	28
Resetting the Dual Video Capture Adapter	28

IOGEAR Upstream Essentials App

IOGEAR UpStream Essentials Application	29
Supported Systems	29
Installing the Dual Video Capture Adapter	29
Connecting the Dual Video Capture Adapter on your Mobile Device	30
Disconnecting the Dual Video Capture Adapter from your Mobile Device	31

Page Components.....	32
Information Tab.....	32
Video Mixer.....	33
Scene Editor.....	34
Overlay Button	35
Switching Video Source	36
Reset Button	36
Resize/Crop Tool	37
Resize	37
Crop	37
Audio Mixer	39
Settings Panel	42
Chroma Key	42
Selecting Color	43
Auto Switch	44
More Settings	45
Advanced	45
Resetting the Dual Video Capture Adapter	46
IOGEAR UpStream Essentials App Factory Default Settings	47
Overview	48
Downloading the Firmware Upgrade Package.....	48
Preparation.....	48

The Firmware Upgrade Utility

Starting the Upgrade	49
Upgrade Succeeded.....	51
Upgrade Failed.....	51

Appendix

Safety Instructions.....	52
General.....	52
Specification	54
Limited Warranty	56
Technical Support	57
EMC Information	58
RoHS.....	58

User Notice

All information, documentation, and specifications contained in this manual are subject to change without prior notification by the manufacturer. The manufacturer makes no representations or warranties, either expressed or implied, with respect to the contents hereof and specifically disclaims any warranties as to merchantability or fitness for any particular purpose. Any of the manufacturer's software described in this manual is sold or licensed as is.

Should the programs prove defective following their purchase, the buyer (and not the manufacturer, its distributor, or its dealer), assumes the entire cost of all necessary servicing, repair and any incidental or consequential damages resulting from any defect in the software.

The manufacturer of this system is not responsible for any radio and/or TV interference caused by unauthorized modifications to this device. It is the responsibility of the user to correct such interference.

The manufacturer is not responsible for any damage incurred in the operation of this system if the correct operational voltage setting was not selected prior to operation. PLEASE VERIFY THAT THE VOLTAGE SETTING IS CORRECT BEFORE USE.

About this Manual

This user manual is provided to help you get the most from the Dual Video Capture Adapter unit. It covers all aspects of installation, configuration, and operation. An overview of the information found in the manual is provided below.

Chapter 1, Introduction introduces you to the Dual HDMI to USB-C UVC Video Capture. Its purpose, features, installation considerations, and panel components are presented and described.

Chapter 2, Hardware Setup describes the steps that are necessary to quickly and safely set up your installation.

Chapter 3, Livestream / Record Setup explains how to find Dual Video Capture Adapter on your system and presents how to setup video and audio source using an example live-stream/record software/platform.

Chapter 4, IOGEAR UpStream Essentials App explains how to download and configure the Dual Video Capture Adapter's UpStream Essentials App.

Chapter 5, The Firmware Upgrade Utility explains how to download the Dual Video Capture Adapter's firmware and upgrade the device using the utility.


An **Appendix** provides a list of safety instructions and precautions, contact information for IOGEAR technical support, product specifications, and other technical information.

Note:

- Read this manual thoroughly and follow the installation and operation procedures carefully to prevent any damage to the unit or any connected devices.
- IOGEAR regularly updates its product documentation for new features and fixes. For up-to-date Dual Video Capture Adapter documentation, visit <https://www.iogear.com>

Conventions

This manual uses the following conventions

Monospaced	Indicates text that you should key in
[]	Indicates keys you should press. For example, [Enter] means to press the Enter key. If keys need to be chorded, they appear together in the same bracket with a plus sign between them: [Ctrl+Alt].
1.	Numbered lists represent procedures with sequential steps
■	Bullet lists provide information, but do not involve sequential steps
→	Indicates selecting the option (on a menu or dialog box, for example), that comes next. For example, Start → Run means to open the <i>Start</i> menu, then select <i>Run</i>
	Indicates critical information

Overview

The Dual Video Capture Adapter is designed to easily capture and mix the two connected 4K video sources in FHD format for livestream purpose with outstanding video effects and remarkable image quality. This video capture device combines video capture, encoding, and 2-channel video mixing and switching from HDMI source and professional line-level audio device. It helps livestreaming become unique and stand out from thousands of CDN videos. The Dual Video Capture Adapter supports easy switch between multiple connected sources and combine them for a rich information delivery in steaming. In addition, it automatically converts the sources to clean-looking USB video format in 720P or 1080P, which is sent to your laptop/smartphone via USB.

Easy to use – the Dual Video Capture Adapter provides an intuitive IOGEAR UpStream Essentials App. This App places everything you need to customize your video stream right at your fingertips. Combine, crop, and scale video to make outstanding PnP layouts. Preset up to 8 custom scenes and manage audio sources with the intuitive touch panel interface for a superior pro-level finish. Open up a world of possibilities by using the chroma keying. You can make it look like you are anywhere by changing the background for eye-popping effects.

Providing smooth video streaming workflow for dual camera or single operator setups, the Dual Video Capture Adapter allows any streamer to broadcast over internet for higher quality livestream to major streaming services or remote conferencing service such as YouTube Live, Facebook, OBS, Microsoft Teams, Microsoft Mixer, Zoom, CameraFi, and Twitch. It enables eye-popping, high-quality one stop programming streaming broadcasting capability with PC and Mac platform.

Whether you're capturing, editing or streaming, the Dual Video Capture Adapter is flexible enough to fit all independent livestreaming broadcasting environments. This micro device packs several features in one such as and its lightweight design makes it possible to fit in any case and bring it to any live event. With just the Dual Video Capture Adapter, companion app, and your laptop / smartphone, you have all the devices you need to present engaging livestreaming that will rival the most advanced streamers on social media and provides an easy-to-use solution.

Package Contents

- 1 GUV322 UpStream Pro Dual Video Capture Adapter
- 1 USB-B to USB-C Cable
- 1 USB-B to USB-A Cable 1 Power Adapter
- 1 Camera Mount Adapter Kit 1 User Instructions

*When using the UpStream Pro Dual Video Capture Adapter, if you are only detecting MJPG video, please disconnect the USB-B to USB-C cable that you connected with the host. Flip the USB-C head around and reconnect it to the host. Please refer to Using the USB Cables on page 26 for more details.

Note: Make sure that all of the components are present and in good order. If anything is missing or was damaged in shipping, contact your dealer.

Features

- Mix and capture two unencrypted 4K live videos at 1080P UVC format on PC or mobile device via USB 3.x interface with seamless transition
- Intuitive Android/iOS App control – set up your camera gear and direct your show from anywhere
- Supports real-time HDMI program video preview
- Easily identifiable chroma keys – can make the video look like you are anywhere by changing the background
- Provides audio mixer with additional dual analog audio inputs
- Supports protected video (encrypted) switching mode for regular event usage
- Compatible with USB & Thunderbolt 3 (USB-C)

Planning the Installation

Prepare the following before installing the Dual Video Capture Adapter unit:

- 2 HDMI source devices
- 1 HDMI display
- 1 XLR audio source
- 1 RCA audio source
- 1 Mobile Device (Android / iOS)

Supported Operating System and Requirements

Hardware:

- CPU: Intel® i3 Dual Core 2.8GHz or higher RAM: 4GB or more
- One USB-C Interface or USB-A Interface
- Android smartphone with UVC and USB-C Interface

Software:

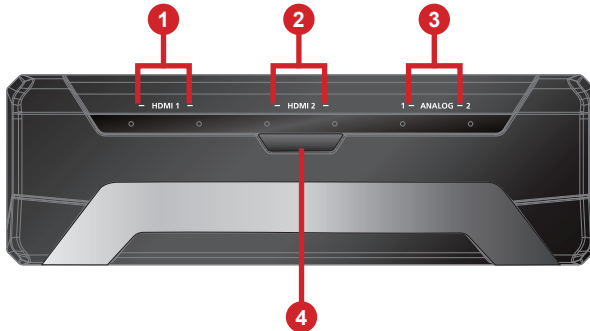
- Windows 7 with Win7_driver installed
- Windows 10 or later
- OS X 10.13 or later
- Android 5.0.1 or later with UVC support

Note: For Windows 7 users, please download and install the Win7_driver from our website. To download the driver, see Downloading the Firmware Upgrade Package, page 48.

Introduction

Components

Front View

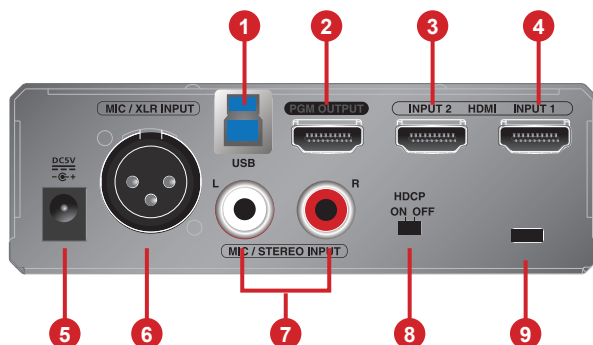


No.	Component	Description
1	HDMI 1 Video Status LED	The LED lights green to indicate the HDMI 1 video source
	HDMI 1 Audio Status LED	The LED lights green to indicate the HDMI 1 audio source
		The LED lights orange to indicate the HDMI 1 audio source connection is muted.
2	HDMI 2 Video Status LED	The LED lights green to indicate the HDMI 2 video source
	HDMI 2 Audio Status LED	The LED lights green to indicate the HDMI 2 audio source
		The LED lights orange to indicate the HDMI 2 audio source connection is muted.
3	Analog 1 Audio Status LEDs	The LED lights green to indicate the Analog 1 (RCA) audio
		The LED lights orange to indicate the Analog 1 (RCA) audio source connection is muted.
	Analog 2 Audio Status LEDs	The LED lights green to indicate the Analog 2 (XLR) audio
		The LED lights orange to indicate the Analog 2 (XLR) audio source connection is muted.
4	Bluetooth Link Pushbutton	Press to quickly switch between scene 1 and scene 2. Press and hold 3 seconds to disconnect the bluetooth connection between Dual Video Capture Adapter and your mobile device. Press and hold the Bluetooth Link Pushbutton, and power on the Dual Video Capture Adapter to perform a firmware upgrade. See <i>Preparation</i> , page 48. Press and hold the Bluetooth Link Pushbutton, power on the Dual Video Capture Adapter, and wait for 10 seconds to reset the unit. See <i>Resetting the Dual Video Capture Adapter</i> , page 28.

Note:

- All the LEDs blink at the same time to indicate that the firmware upgrade is in progress.
- The HDMI 1 Video Status LED and the HDMI 2 Video Status LED blink once every 0.5 seconds for 3 seconds when you disconnect the bluetooth connection.

Rear View



No.	Component	Description
1	USB-B UVC Output Port	Connects to a host.
2	HDMI Program Output Port	Programmed (PGM) Video Output.
3	HDMI 2 Input Port	Connects to an HDMI input.
4	HDMI 1 Input Port	Connects to an HDMI input.
5	Power Jack	The power adapter plugs here.
6	Analog 2 Input Port	Connects XLR audio source here.
7	Analog 1 Input Port (L/R)	Connects RCA audio source here.
8	HDCP Switch	Switch to display HDCP protected content.
9	Kensington Lock	Kensington security slot plugs here.

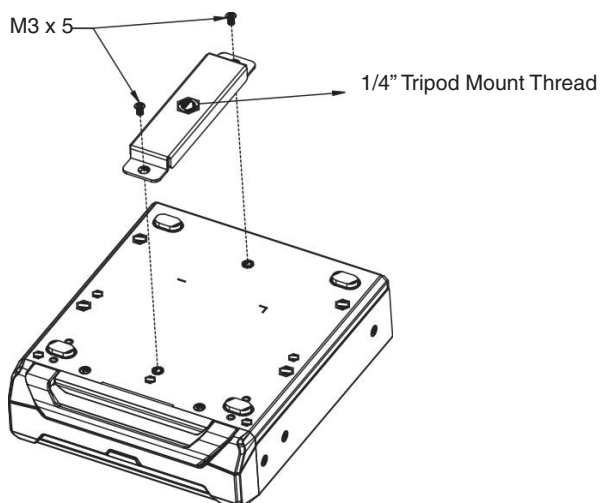
Hardware Setup



Please review the safety information regarding the placement of this device in Safety Instructions, page 52.

Mounting the Camera Mount Adapter

To mount the camera mount adapter, screw the camera mount adapter on the bottom of the Dual Video Capture Adapter with the screws provided in the Camera Mount Adapter Kit.



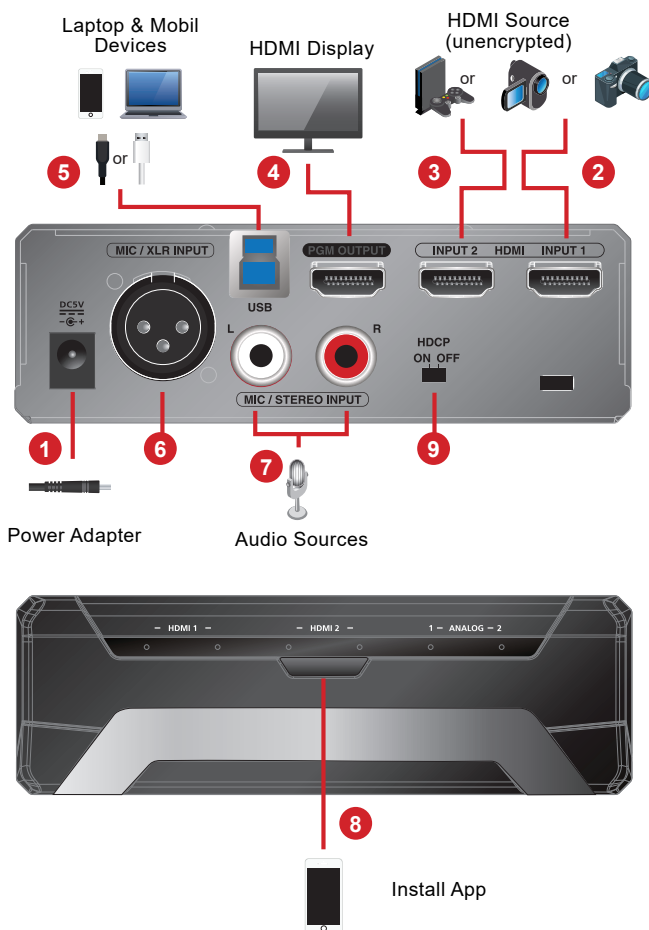
Optional Rack Mounting

For convenience and flexibility, the Dual Video Capture Adapter is compatible with the Teranex Mini Rack Shelf.

Hardware Setup

Connecting the Dual Video Capture Adapter Unit

Follow the steps below to connect the Dual Video Capture Adapter.



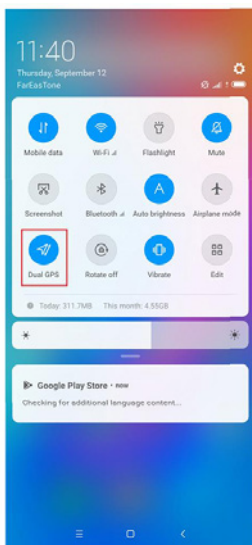
1. Plug the power adapter cable into the Power Jack.
2. Connect your first HDMI source device to the HDMI 1 Input Port.*
3. Connect your second HDMI source device to the HDMI 2 Input Port.*

Hardware Setup

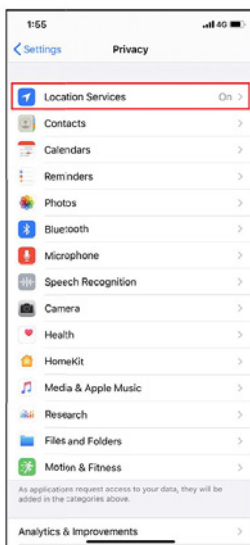
4. Connect the HDMI Program Output Port to an HDMI-enabled display using an HDMI cable (not included) to display your pre-programmed HDMI content.
5. If your laptop only has a USB-A interface, connect the USB-B to USB-A Cable (included) to your laptop. Or, if your Android mobile device / laptop only has a USB-C interface, connect the USB-B to USB-C Cable (included) to your Android mobile device / laptop respectively.
6. Connect your XLR audio source to the Analog 2 Input Port.
7. Connect your RCA audio source to the Analog 1 Input Port.
8. Open the IOGEAR UpStream Essentials App to pair up the Dual Video Capture Adapter with your app installed mobile device. For more information, see IOGEAR UpStream Essentials App page 29.

Note: Please make sure to enable the GPS function before you begin to use the IOGEAR UpStream Essentials App.

Android



iOS



9. (Optional) For video switching, to display the HDCP protected content to the connected HDMI display (without video capture), please put the HDCP Switch to ON.

Note: * The Dual Video Capture Adapter cannot capture HDCP protected content.

IOGEAR UpStream Essentials App Installation

Download and install the IOGEAR UpStream Essentials App from the Play Store to your Android mobile device. This App is designed for the GUV322 to manage and edit the program results. The IOGEAR UpStream Essentials App includes the following power features.

- Storyboard-like management
- Scenes editor
- Audio sensing switch
- Chroma keying management
- Audio mixer management

Phone Tray

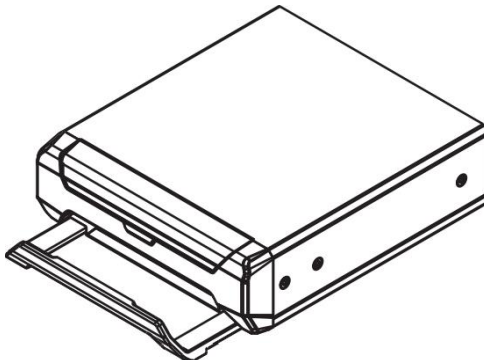
A phone tray is available for the mobile device to sit in. To use the phone tray for your mobile device, follow the steps below.

1. Simply slide the phone tray out from the Dual Video Capture Adapter.



Phone Tray

2. Place your mobile device on it.



Software

To enable Dual Video Capture Adapter, please download and install a suitable video recording or live streaming software for your requirement.

PC

Below lists some examples of supported video recording / live streaming software for PC.

All trademarks are property of their respective owners.

OBS: <https://obsproject.com>

Xsplit: <https://www.xsplit.com>

<https://www.youtube.com>

<https://www.facebook.com>

<https://www.zoom.com>

<https://www.skype.com>

<https://www.microsoft.com/en-us/microsoft-365>

Android Smartphone

Below is an example of supported video recording / live streaming for Android smartphone.

All trademarks are property of their respective owners.

<http://www.camerafi.com/supported-devices/>

A general reference of how to go about using Dual Video Capture Adapter is described in the next chapter.

Livestream / Record Platform

Below lists a few of the available live-streaming or recording software/platforms:

[OBS: https://obsproject.com](https://obsproject.com)

[Xsplit: https://www.xsplit.com](https://www.xsplit.com)

<https://www.youtube.com>

<https://www.facebook.com>

<https://www.zoom.com>

<https://www.skype.com>

<https://www.microsoft.com/en-us/microsoft-365>

All trademarks are property of their respective owners.

Discovering Dual Video Capture Adapter on your System

Dual Video Capture Adapter is a plug-and-play device, please make sure your system is able to discover it. After connecting Dual Video Capture Adapter as shown in Connecting the Dual Video Capture Adapter Unit on page 13, refer to the examples below on how your system may discover Dual Video Capture Adapter.

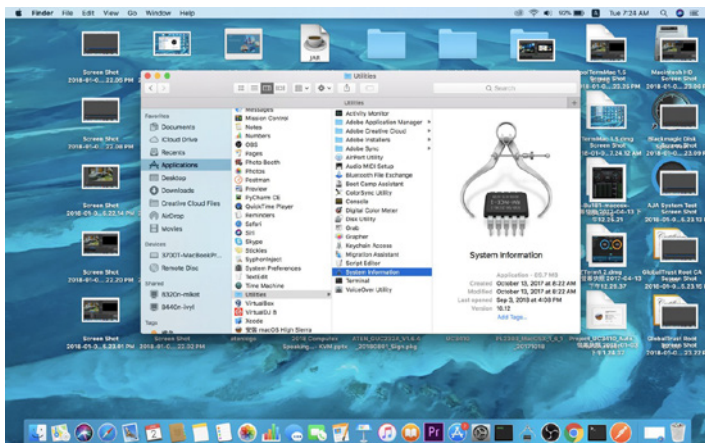
Mac Operating System

1. On the desktop, click to select “Go” followed by “Utilities”.

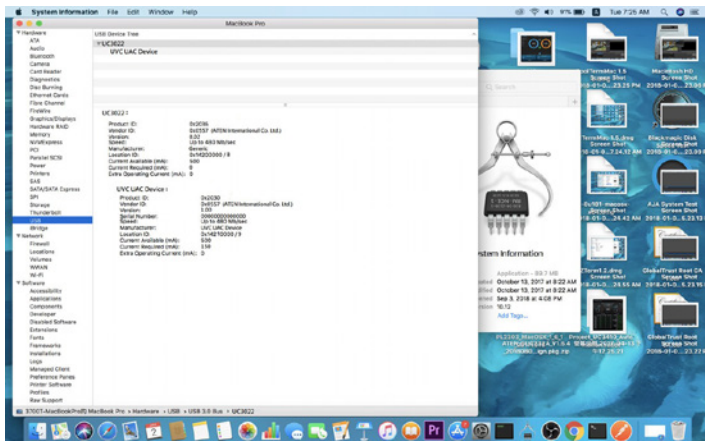


Livestream / Record Setup

2. On the “Utilities” window, double-click “System Information” to bring up the system window.

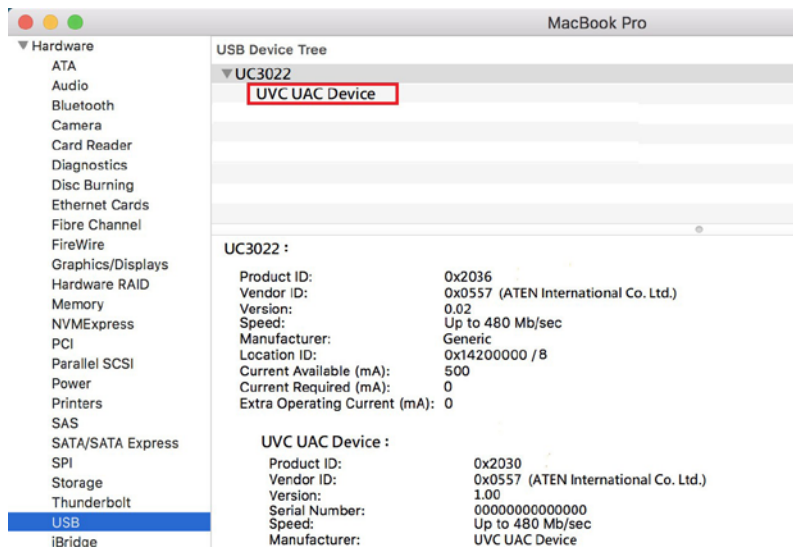


3. Go to the USB page by clicking “USB” under “Hardware”.



Livestream / Record Setup

4. Under “USB 3.0 Bus”, you should see an “UVC UAC Device”. This indicates that your system has successfully discovered Dual Video Capture Adapter.

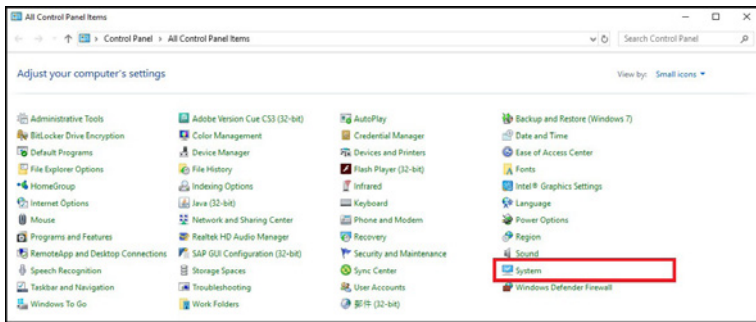


Go to the next section for an example of how to setup both video and audio for live-streaming and recording using Dual Video Capture Adapter.

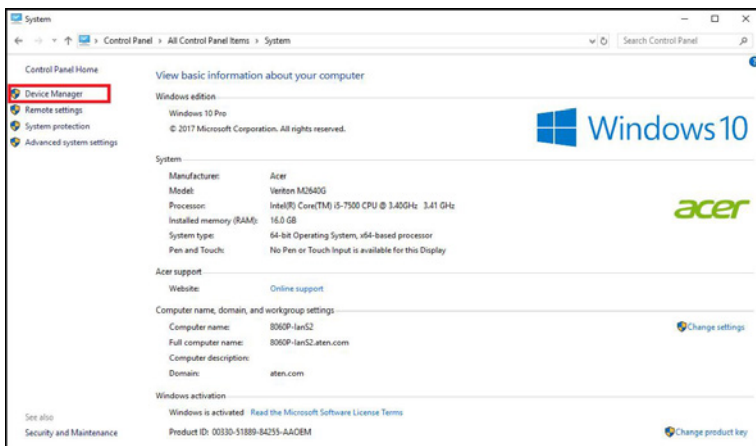
Windows Operating System

This is an example used in a Windows 10 Operating System.

1. On a Windows 10 desktop, go to **Control Panel** and select **System**.

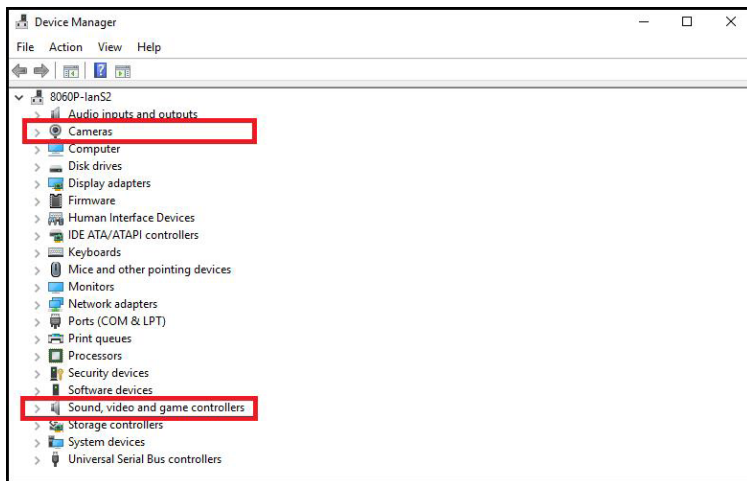


2. The System window appears, select **Device Manager**.

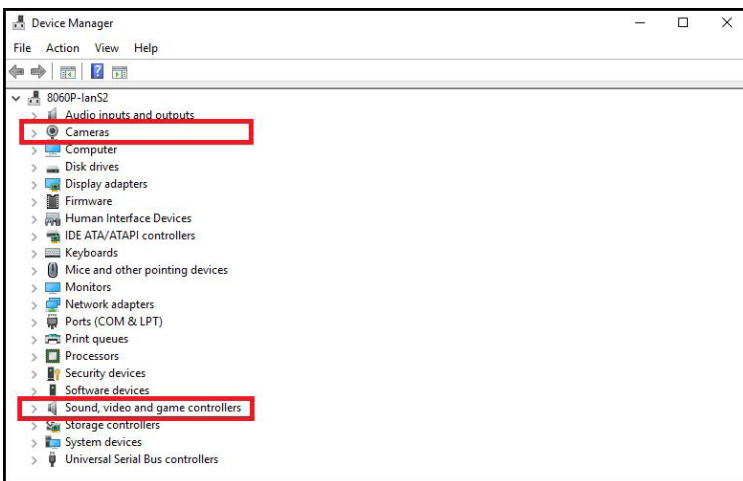


Livestream / Record Setup

3. The Device Manager window appears. Click on **Cameras** and **Sound, video and game controllers**.



4. You should see an “USB Video Device” in the Camera list, and an “USB Audio Device” in the Sound, video and game controllers list. This indicates that your system has successfully discovered Dual Video Capture Adapter.

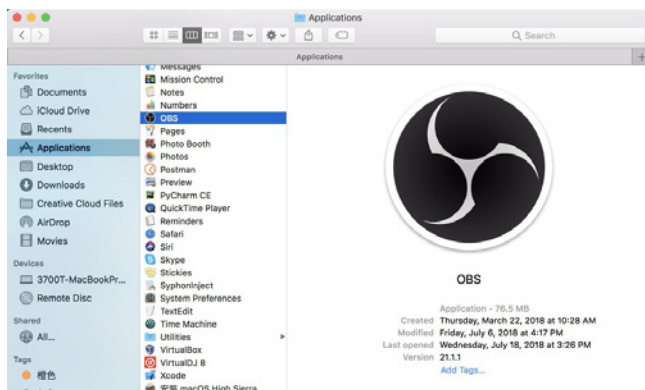


Video and Audio Setup

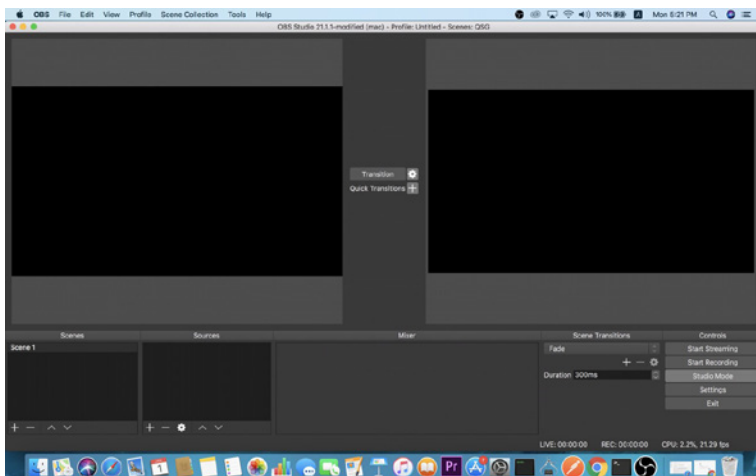
After your system discovers Dual Video Capture Adapter, choose your livestream/record platform. You will need to setup the video and audio source coming from Dual Video Capture Adapter.

Follow the steps below to setup your video and audio sources (separately).

Note: OBS software is the example used in the setup steps below.

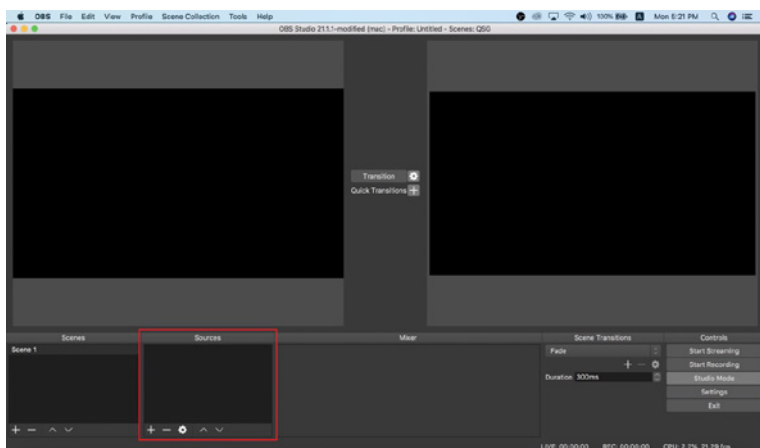


1. On your system, open the OBS software.

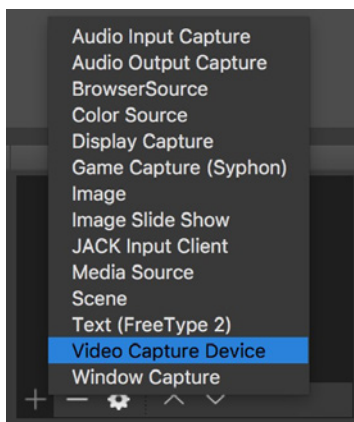


Livestream / Record Setup

2. Locate and click the “+” button on the bottom of the “Sources” pane (outlined in red in the picture below) to open the add source menu:

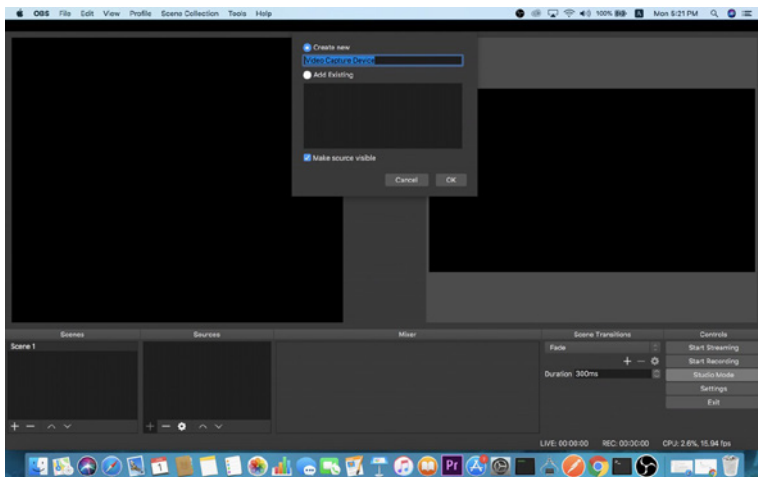


3. Select “Video Capture Device” or “Audio Capture Device”.

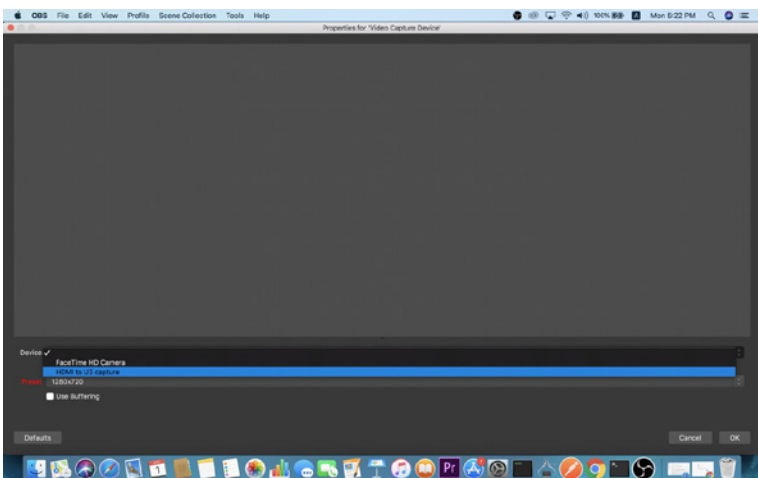


Livestream / Record Setup

4. A pop-up window will be shown for you to name the video/audio source. Click the “OK” button to continue. It is recommended that “Make source visible” is checked.



5. On the properties page, click the drop-down menu named “Device” to select Dual Video Capture Adapter’s video/audio source. Both the video and audio sources of Dual Video Capture Adapter have the name “HDMI to U3 capture”.



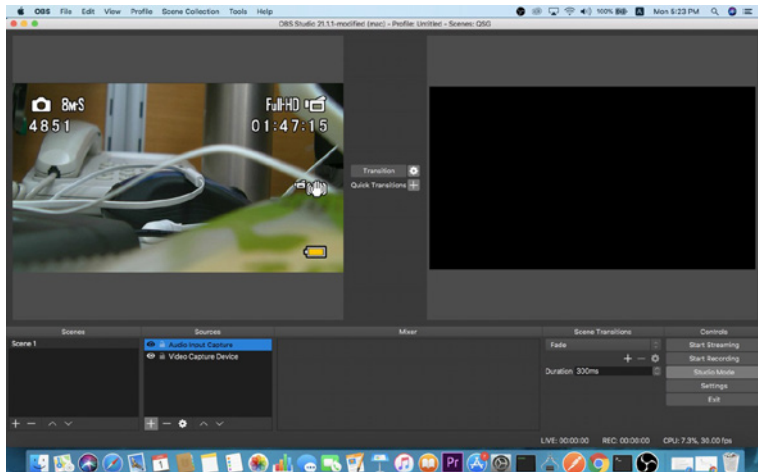
After selecting the video source, the image from Dual Video Capture Adapter should be displayed as shown below.

Livestream / Record Setup

Click the “OK” button to continue.



6. For successful setup, the sources will be shown in the “Source” panel.



Setup of video and audio sources are complete, you can now start live- streaming/ video recording.

Detailed configuration of your live-streaming/video recording software/platform is not within the scope of this user manual, please refer to the software/ platform's instruction guides/manual.

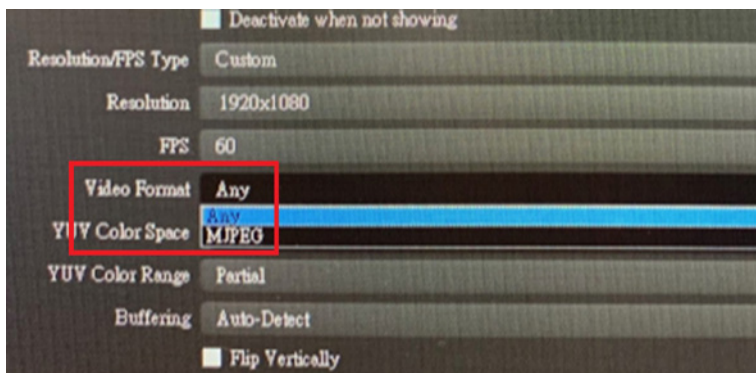
Using the USB Cables

When connecting Dual Video Capture Adapter on a PC with a USB2.0 interface, it will automatically set the provided compressed video quality to the MJPEG compression mode to fit the data bandwidth. For better video quality, we strongly recommend to connect Dual Video Capture Adapter to a USB3.1 Gen1 interface.

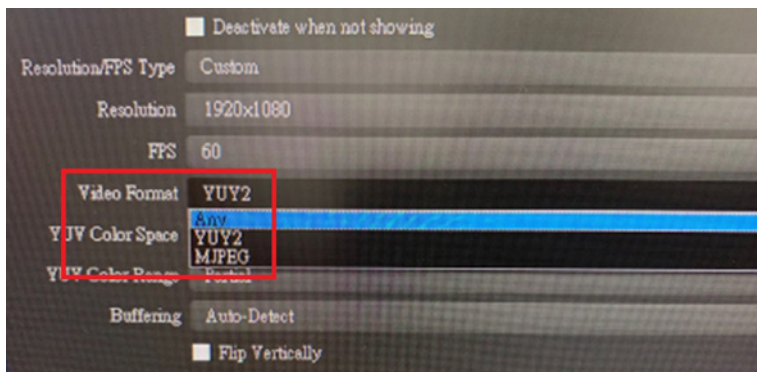
To make sure the result match your media output you wish to capture, please check the detected video format from your capture software first.

Capture device custom setting page examples displaying USB 3.1-RAW and USB2.0-MJPEG on OBS software are shown below:

- USB2.0 mode with MJPEG video format only

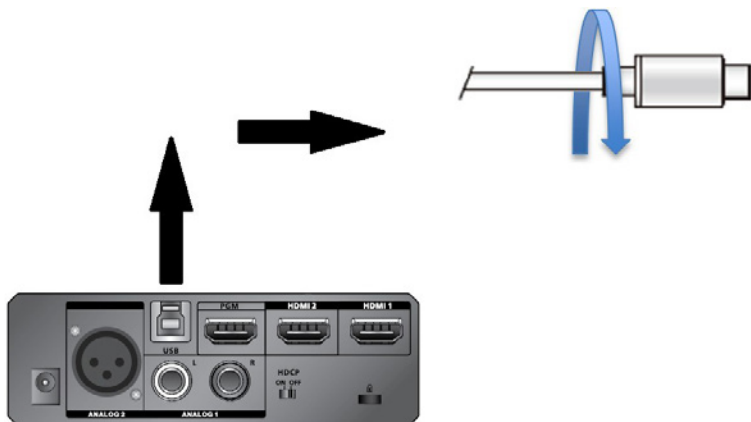


- USB3.1 mode with RAW (YUY2) and MJPEG video formats



Livestream / Record Setup

If you find that the captured media only has MJPEG format, simply flip the USB- B to USB-C Cable connector connected to the Dual Video Capture Adapter as shown in the diagram below:



HDCP Switching

To display HDCP protected content via the HDMI Program Output Port using an HDMI cable, switch the HDCP Switch to ON. The default is OFF.

Note:

1. The Dual Video Capture Adapter cannot capture HDCP protected content.
2. UVC / UAC become unavailable when the HDCP Switch is switched to ON.



HDCP Switch

HDCP	PGM HDMI Output Resolution	USB Video Output Mode	UVC Video Output Format
OFF	720p, 1080p	PC	720p, 1080p MJPEG or YUY2
		Phone	720p, 1080p MJPEG
ON	720p, 1080p, 2160p @ 30Hz	N/A	N/A

Resetting the Dual Video Capture Adapter

To reset the Dual Video Capture Adapter to its default settings, do the following:

1. Press and hold the Bluetooth Link Pushbutton.



Bluetooth Link Pushbutton

2. Plug the power adapter cable into the power jack to power on the Dual Video Capture Adapter. Wait for 10 seconds before you release the Bluetooth Link Pushbutton.
3. The front panel LEDs blink together once every 0.1 seconds and the Dual Video Capture Adapter resets itself back to default settings.

IOGEAR UpStream Essentials Application

IOGEAR UpStream Essentials App acts as the central controller for Dual Video Capture Adapter. The app's design is a control panel where you can monitor program results, edit scenes, setup video and audio settings, etc. Download the IOGEAR UpStream Essentials app from the App Store or Google Play and install it on your mobile device.

Note:




1. The maximum operation time for the IOGEAR UpStream Essentials App is 4 hours.
2. Please make sure to enable the GPS function before you begin to use the IOGEAR UpStream Essentials App.

Supported Systems

The IOGEAR UpStream Essentials App supports the following mobile operating systems:

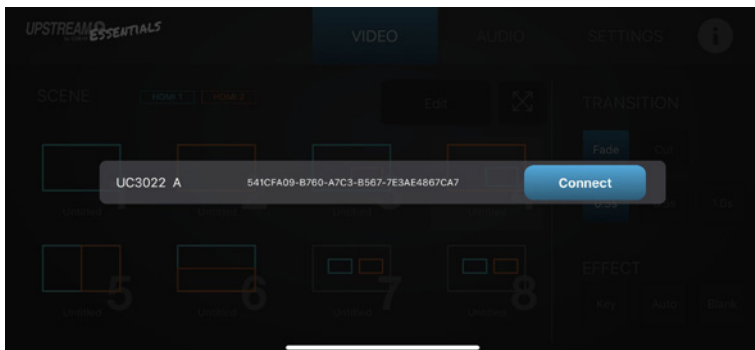
Mobile Operating System	Supported Versions
Android	version 5 or later
iOS	version 10 or later

Installing the Dual Video Capture Adapter

1. Install the Dual Video Capture Adapter App on a mobile device.
 - a. From the mobile device, tap the **App Store**  or **Google Play**  icon.
 - b. In the search box, type "Dual Video Capture Adapter".
 - c. Tap Dual Video Capture Adapter and install the app.
2. From the mobile device, tap the **UpStream Essentials** icon .
3. Follow the on-screen instructions.

Connecting the Dual Video Capture Adapter on your Mobile Device

Dual Video Capture Adapter is a plug-and-play device, after connecting Dual Video Capture Adapter as shown in Connecting the Dual Video Capture Adapter Unit on page 13. Open the UpStream Essentials, it automatically searches for the Dual Video Capture Adapter, and press Connect.

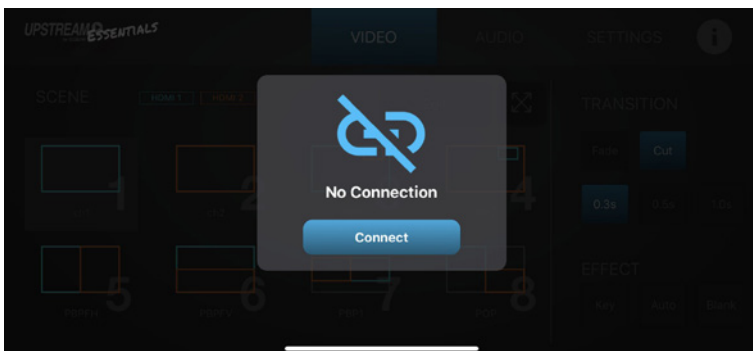


When you have connected to the Dual Video Capture Adapter successfully, the screen below appears.



IOGEAR Upstream Essentials App

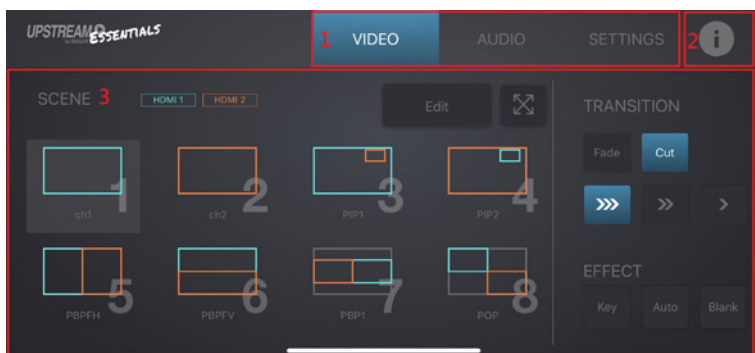
When your mobile device is out of range, a warning message below appears. To connect back to the Dual Video Capture Adapter, press **Connect** and follow the on- screen instructions as explained in page 29.



Disconnecting the Dual Video Capture Adapter from your Mobile Device


To connect another mobile device to the Dual Video Capture Adapter, press the Bluetooth Link Pushbutton for 3 seconds. HDMI1 and HDMI 2 LEDs blink together once every 0.5 seconds for 3 seconds.

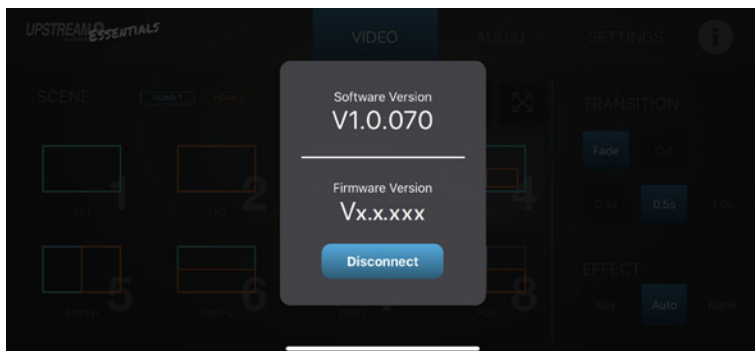
Page Components



No.	Component	Description
1	Deck Selector	Tap to select the desired configuration deck. Three decks are available: Video Mixer, Audio Mixer, and Settings.
2	Information	Tap to see the current software version, and firmware version information. See Information Tab, page 32.
3	Deck Content	The content depends on the selected deck.

Information Tab

To browse the current software and firmware version, tap  from the IOGEAR UpStream Essentials App screen.



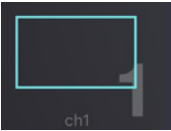

IOGEAR Upstream Essentials App

Video Mixer

The Video Mixer deck page allows you to adjust effect on your video, scene selection and editing, and transition control.

The components of the page is shown below:



No.	Component	Description
1	Scene Selector	<p>8 scenes are shown here.</p> <p>Blue outline scene = HDMI 1.</p> <p>e.g.</p>  <p>Orange outline scene = HDMI 2.</p> <p>e.g.</p>  <p>Tap a scene to put the scene into the PRV Preview section. To put the scene in PRV Preview to PGM Preview, use the Transition Control (explained below).</p>

IOGEAR Upstream Essentials App

No.	Component	Description
2	Scene Editor	You can configure each individual scene by tapping this icon. Refer to on page 34 on how to edit each scene.
3	Enlarge	
4	Transition Control	<p>Controls the switching for the current stream (PGM).</p> <p>To switch,</p> <ol style="list-style-type: none"> 1. Tap the Cut Cut button; or 2. Select a specified time between 1s, 2s, and 3s transition, and tap the Fade Fade button. <p><u>Using the Cut button</u> The transition happens immediately when you tap the Cut button.</p> <p><u>Using the Fade button</u> Tapping the Fade button will begin the transition after a specified time (1, 2, and 3 seconds).</p>
5	Effect Control	<p>Tap Key to enable the chroma key effect to the HDMI display connected on the HDMI Program Output Port. See <i>Chroma Key</i>, page 39 for more details.</p> <p>Tap Auto to switch display content for the HDMI display connected on the HDMI Program Output Port to follow the input audio source. See <i>Auto Switch</i>, page 41.</p> <p>Tap Blank to bring a blank background to the HDMI display connected on the HDMI Program Output Port.</p>

Scene Editor

To edit a scene, follow the steps below.

1. Select a scene from the scene selector.
2. Tap the **Edit** button from the Video Mixer page.


An example of a PIP2 is used and shown below:



IOGEAR Upstream Essentials App

No.	Component	Description
1	Return Button	Tap to return to the Video Mixer page
2	Scene Name	This region displays the scene name. Tap to edit the scene name.
3	Overlay Button	Tap to switch between main display and overlay display. You can also resize and crop the overlay scene.
4	Switch Video Source (Dual- View)	During dual-view, tap this button to switch video source position between HDMI 1 and HDMI 2. You can also resize and crop the switched source.
5	Reset Button	Tab to reset the current scene.
6	HDMI 2 Display and Resize Tool	Displays the HDMI 2 content with resize / crop tool. To resize the HDMI 2 content, see <i>Resize</i> , page 37. To crop the HDMI 2 content, see <i>Crop</i> , page 37.
7	HDMI 1 Display and Resize Tool	Displays the HDMI 1 content with resize / crop tool. To resize the HDMI 1 content, see <i>Resize</i> , page 37. To crop the HDMI 1 content, see <i>Crop</i> , page 37.
8	Layout Selection	Tap to select a preferred layout. You can also resize the dual-view.


Overlay Button

To view the overly display from a dual-view scene, tap  from the Scene Editor page.



IOGEAR Upstream Essentials App

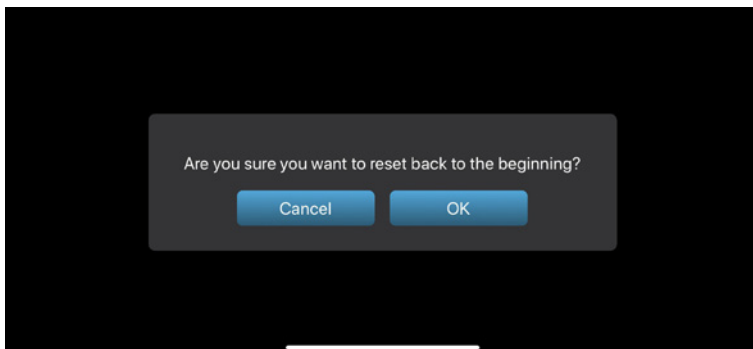
Switching Video Source

To switch the video source position between HDMI 1 and HDMI 2, tap  from the Scene Editor page.



Reset Button

To reset or undo any changes made to the selected scene, tap **Reset** from the Scene Editor page. A warning message appears, click **OK**.





Resize/Crop Tool

This section describes how to resize or crop HDMI 1 and HDMI 2 of the scene layout.

Resize



Tap and hold to drag the resize tool  to resize the displays.

To resize HDMI 1 and HDMI 2 display content, select a scene and tap **Edit** button from the Video Mixer page. A resize tool  will be visible on the HDMI 1 and HDMI 2 displays in the scene editor page. An example of a PIP2 is used and shown below:


Crop

To crop HDMI 1 and HDMI 2 display content, select a scene and tap **Edit** button from the Video Mixer page. A crop tool will be visible on the HDMI 1 and HDMI 2 displays in the scene editor page. An example of a PIP2 is used and shown below:




IOGEAR Upstream Essentials App

To crop the display content, follow the steps below.


1. Tap the crop tool  button and the screen below appears.



2. Tap the enlarge  button to crop the display content. The screen below appears.



IOGEAR Upstream Essentials App

3. Tap and hold to drag the cropping tool point  to adjust the cropping area. Tap and hold to relocate the cropping area.

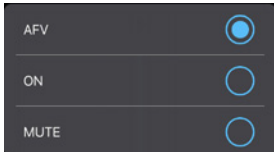

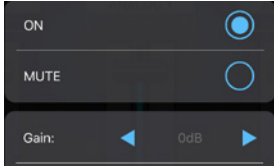


4. When completed, tap **Done**.

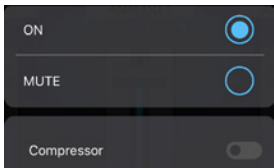


Audio Mixer

The components of the Audio Mixer deck page is shown below:



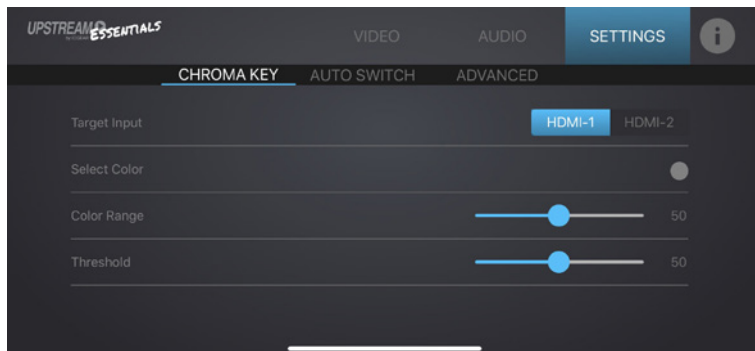
No.	Component	Description
1	Audio Level Control	Slide the volume slider to control the volume of each audio source.
2	Audio Control	<p>Tap to select and adjust audio control. For the LEDs status indication, see Front View, page 4.</p> <p>HDMI1 and HDMI2:</p> <p>Tap to select an audio control for HDMI 1 and HDMI 2 between AFV, ON, and MUTE.</p>  <p>AFV (Audio-Follow-Video): Broadcasting the source's video and audio at the same time. ON: The audio is turned on (unmuted). MUTE: The audio is turned off (muted).</p> <p>ANALOG 1:</p> <p>Tap to select an audio control for ANALOG 1 between ON, and MUTE.</p>  <p>ON: The audio is turned on (unmuted). MUTE: The audio is turned off (muted).</p> <p>ANALOG 2:</p> <p>Tap to select an audio control and adjust MIC Gain settings for ANALOG 2 between ON, and MUTE.</p>  <p>ON: The audio is turned on (unmuted). MUTE: The audio is turned off (muted). Gain: Select the threshold between 0dB, +6dB, +12dB, +18dB, +24dB, and +30dB. Type: Select between Mono and Stereo.</p>

IOGEAR Upstream Essentials App

No.	Component	Description
		<p>PGM:</p> <p>Tap to select an audio control and adjust compressor settings for PGM between ON, and MUTE.</p>  <p>ON: The audio is turned on (unmuted). MUTE: The audio is turned off (muted).</p> <p>Compressor: Tap to enable or disable the compressor function and drag the dial to adjust the threshold. The default setting is disable.</p> <p>The Compressor looks like this  when it is disabled.</p> <p>The Compressor looks like this  when it is enabled.</p>
3	L/R Balance Control	Tap and hold to drag and control which side of the sound source is to be more emphasized.
4	PGM Level Control	Slide the volume slider to control the volume of PGM.

Settings Panel

The Settings deck page is shown below:

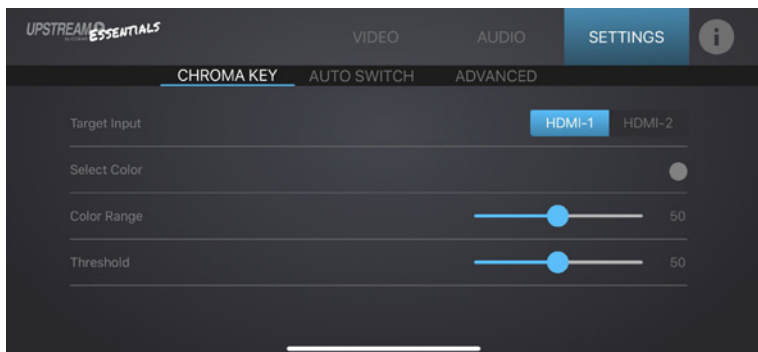


Chroma Key

Chroma key allows user to composite two HDMI sources based on a color range, it usually goes hand-in-hand with a green screen. Our IOGEAR UpStream Essentials App removes the color screen background and fill in the area with the HDMI sources.



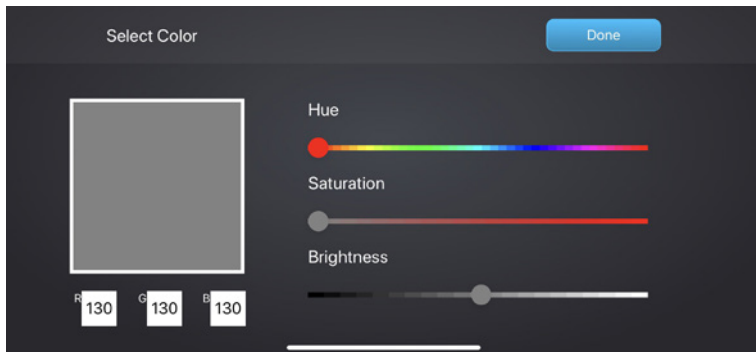
IOGEAR Upstream Essentials App



No.	Component	Description
1	Target Input	Selects a target input for the Chroma Key.
2	Select Color	Selects a color background for the HDMI input source to be fully transparent.
3	Color Range	Adjust the color range for the colored background.
4	Threshold	Adjust the threshold for the colored background.

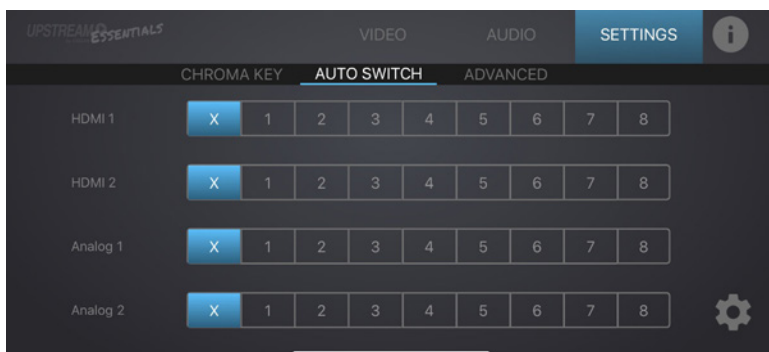
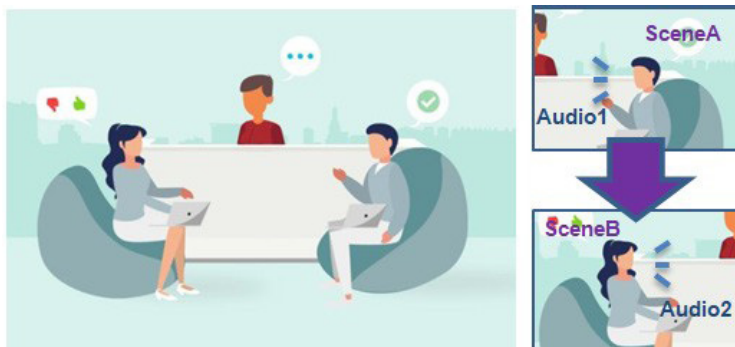
Selecting Color

Selects a color background for the target input by adjusting the Hue, Saturation, and Brightness. When completed, tap **Done**.



Auto Switch

Auto switch allows user to switch the HDMI display content connected on the HDMI Program Output Port to automatically follow with the input audio source. You can select a scene for each audio input source for the auto switch.




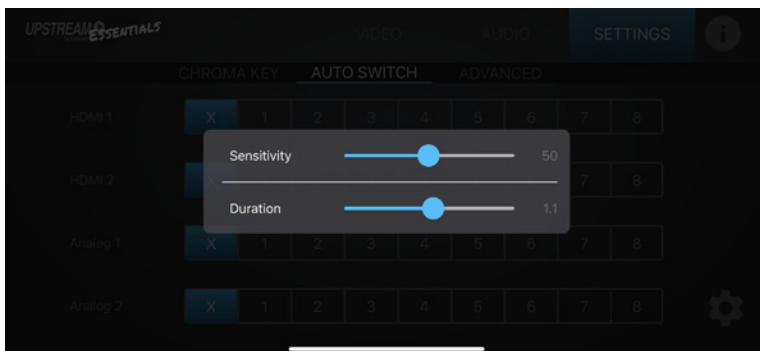
Note: See Scene Selector, page 29 for more details.

No.	Component	Description
1	HDMI 1	Selects a scene for the HDMI 1.
2	HDMI 2	Selects a scene for the HDMI 2.
3	ANALOG 1	Selects a scene for the ANALOG 1.
4	ANALOG 2	Selects a scene for the ANALOG 2.

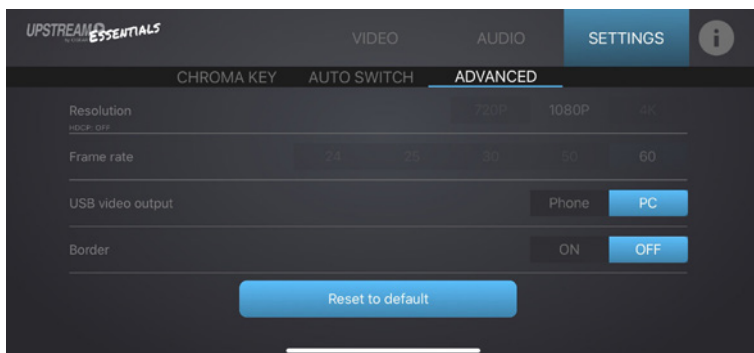
IOGEAR Upstream Essentials App

More Settings

Tap on the  to adjust the audio sensitivity and duration.



Advanced

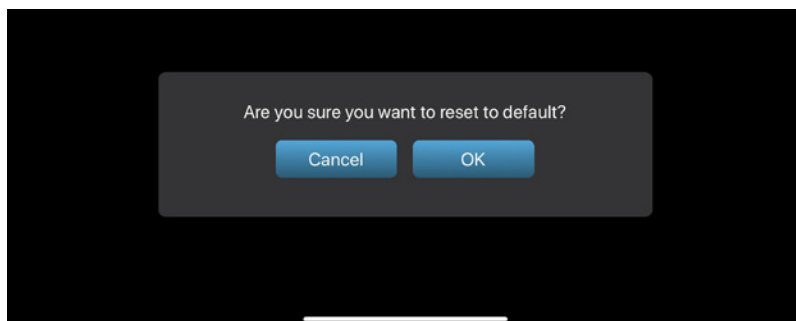


No.	Component	Description
1	Resolution	Selects a resolution for the HDMI display content when the HDCP is turned on. Note: 4K resolution is not supported when the HDCP is turned off, see HDCP Switching, page 28 for details.
2	Frame Rate	Selects a frame rate for the HDMI display content when the HDCP is turned on.
3	USB Video Output	Selects a USB video output between Phone and PC.
4	Border	Sets a video border for the HDMI display content.

IOGEAR Upstream Essentials App

Resetting the Dual Video Capture Adapter

To reset the Dual Video Capture Adapter back to the factory settings, tap [Reset to default](#). A warning message appears, click **OK**.



IOGEAR UpStream Essentials App Factory Default Settings

The UpStream Essentials App factory default settings are as follows:

Deck	Component	Setting	Default
Video	Layout Name	1	ch1
		2	ch2
		3	PIP1
		4	PIP2
		5	PBPFH
		6	PBPFV
		7	PBP1
		8	POP
	Transition	Effect	Cut
		Duration	0.3 seconds
Audio	HDMI 1	Volume	AFV, 0dB
	HDMI 2	Volume	AFV, 0dB
	ANALOG 1 (RCA)	Volume	On, 0dB
	ANALOG 2 (XLR)	Volume	On, 0dB
		Gain	0dB
		Type	Mono
	PGM	Volume	On, 0dB
		Compressor	Off, 0dB
Settings	CHROMA KEY	Target Input	HDMI 1
		Select Color	130 / 130 / 130
		Color Range	50
		Threshold	50
	AUTO SWITCH	HDMI 1	X
		HDMI 2	X
		Analog 1	X
		Analog 2	X
		Sensitivity	50
		Duration	1
	ADVANCED	Resolution	1080p (HDCP On)
		Frame Rate	60
		Border	Off
		USB Video Output	PC

The Firmware Upgrade Utility

Overview

The purpose of the Firmware Upgrade Utility is to provide an easy process for users to upgrade the Dual Video Capture Adapter unit to either support PC video capture, or Android smartphone video capture capability.

As new firmware versions become available, new firmware upgrade packages are posted on our website. Check the website regularly to find the latest information and packages.

Downloading the Firmware Upgrade Package

To download the firmware upgrade package:

1. On our Website, go to Support Center - Download and choose the device model, or from the Dual Video Capture Adapter product page, click on the Support and Downloads tab, and go to Software & Drivers. A list of available firmware upgrade packages appears.
2. Choose the firmware upgrade package that you wish to install (usually the most recent) and download it to your computer.

Note: For Windows 7 users, please download and install the Win7_driver from on our website after the upgrade is successful. See Starting the Upgrade, page 49.

Preparation

To prepare for the firmware upgrade, do the following:

1. Press and hold the Bluetooth Link Pushbutton.

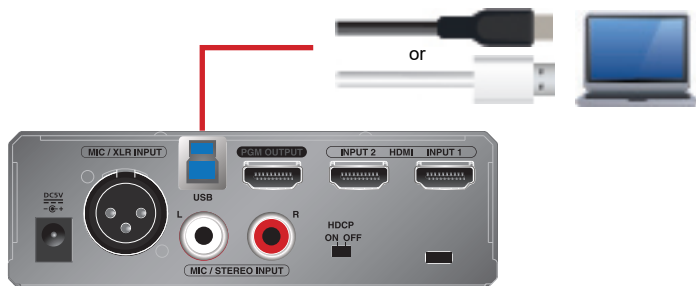


Bluetooth Link Pushbutton

2. Plug the power adapter cable into the power jack to power on the Dual Video Capture Adapter. The front panel LEDs blink together once every 0.5 seconds to indicate Firmware Upgrade Mode is in effect.

The Firmware Upgrade Utility

3. Connect the USB-B UVC Output Port to the host. If your laptop only has a USB-A interface, connect the (included) USB-B to USB-A adapter between the host and the USB-B UVC Output Port.

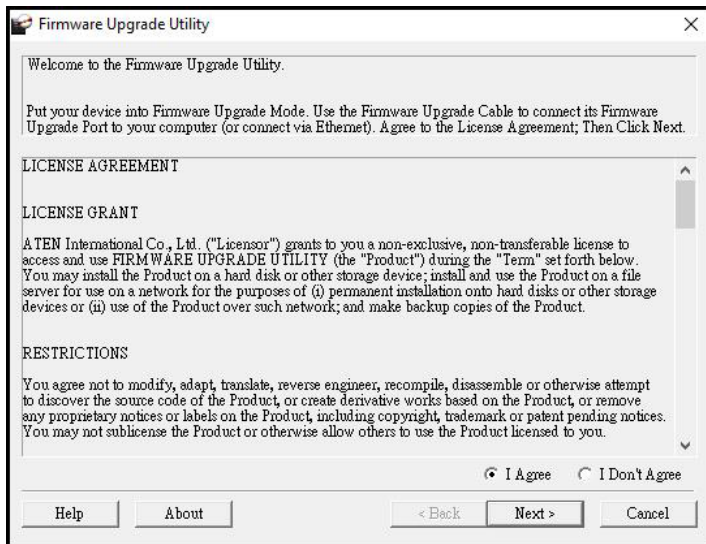


Starting the Upgrade

To upgrade the Dual Video Capture Adapter, follow the steps below:

1. Run the downloaded Firmware Upgrade Package file – either by double clicking the file icon, or by opening a command line and entering the full path to it.

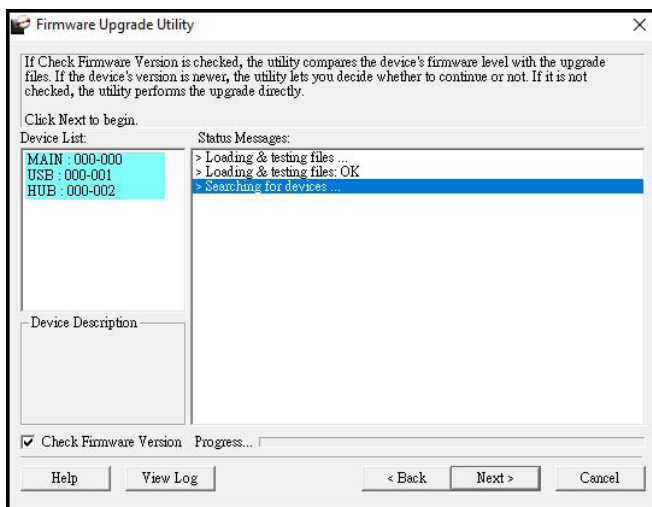
The **Firmware Upgrade Utility** Welcome screen appears:



Note: The screens shown in this section are for reference only. The wording and layout of the actual screens put up by the Firmware Upgrade Utility may vary slightly from these examples.

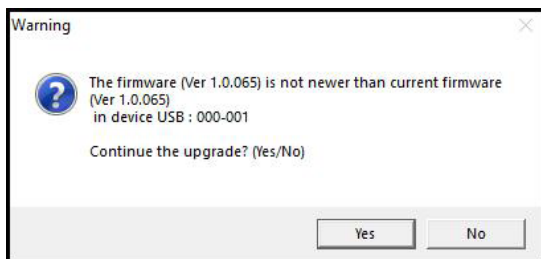
The Firmware Upgrade Utility

2. Read the License Agreement (enable the **I Agree** radio button).
3. Click **Next** to continue. The Firmware Upgrade Utility main screen appears:



The Utility inspects your installation. All the devices capable of being upgraded by the package are listed in the **Device List** panel.

4. Click **Next** to perform the upgrade.



If you enabled Check Firmware Version, the Utility compares the device's firmware level with that of the upgrade files. If it finds that the device's version is higher than the upgrade version, it brings up a dialog box informing you of the situation and gives you the option to Continue or Cancel.

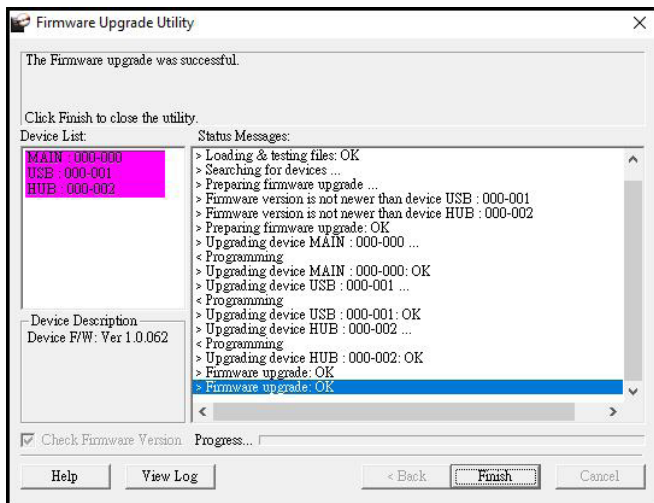
If you didn't enable Check Firmware Version, the Utility installs the upgrade files without checking whether they are a higher level, or not.

As the Upgrade proceeds, status messages appear in the Status Messages panel, and the progress toward completion is shown on the Progress bar.

The Firmware Upgrade Utility

Upgrade Succeeded

After the upgrade has completed, a screen appears to inform you that the procedure was successful:



Click **Finish** to close the Firmware Upgrade Utility.

After a successful completion, the Dual Video Capture Adapter exit Firmware Upgrade Mode, and resets itself.

Note: For Windows 7 users, please download and install the Win7_driver from on our website after the upgrade is successful. To download the driver, see [Downloading the Firmware Upgrade Package](#), page 48.

Upgrade Failed

If the **Upgrade Succeeded** screen doesn't appear, it means that the upgrade failed to complete successfully, in which case you should do the following:

1. Power off the Dual Video Capture Adapter by removing the power jack.
2. Invoke Firmware Upgrade Mode by holding down the **Bluetooth Link Pushbutton** on the front panel (see **HDMI 2 Audio Status LED**, page 4), and power on the Dual Video Capture Adapter. The front LEDs flash together.
3. Do the firmware upgrade procedure again.

Safety Instructions

General

- This product is for indoor use only.
- Read all of these instructions. Save them for future reference.
- Follow all warnings and instructions marked on the device.
- Do not place the device on any unstable surface (cart, stand, table, etc.). If the device falls, serious damage will result.
- Do not use the device near water.
- Do not place the device near, or over, radiators or heat registers.
- The device cabinet is provided with slots and openings to allow for adequate ventilation. To ensure reliable operation, and to protect against overheating, these openings must never be blocked or covered.
- The device should never be placed on a soft surface (bed, sofa, rug, etc.) as this will block its ventilation openings. Likewise, the device should not be placed in a built in enclosure unless adequate ventilation has been provided.
- Never spill liquid of any kind on the device.
- Unplug the device from the wall outlet before cleaning. Do not use liquid or aerosol cleaners. Use a damp cloth for cleaning.
- The device should be operated from the type of power source indicated on the marking label. If you are not sure of the type of power available, consult your dealer or local power company.
- The device is designed for IT power distribution systems with 230V phase- to-phase voltage.
- To prevent damage to your installation it is important that all devices are properly grounded.
- The device is equipped with a 3-wire grounding type plug. This is a safety feature. If you are unable to insert the plug into the outlet, contact your electrician to replace your obsolete outlet. Do not attempt to defeat the purpose of the grounding-type plug. Always follow your local/national wiring codes.
- Do not allow anything to rest on the power cord or cables. Route the power cord and cables so that they cannot be stepped on or tripped over.
- If an extension cord is used with this device make sure that the total of the ampere ratings of all products used on this cord does not exceed the extension cord ampere rating. Make sure that the total of all products plugged into the wall outlet does not exceed 15 amperes.
- To help protect your system from sudden, transient increases and decreases in electrical power, use a surge suppressor, line conditioner, or uninterruptible power supply (UPS).
- Position system cables and power cables carefully; Be sure that nothing rests on any cables.

Appendix

- Never push objects of any kind into or through cabinet slots. They may touch dangerous voltage points or short out parts resulting in a risk of fire or electrical shock.
- Do not attempt to service the device yourself. Refer all servicing to qualified service personnel.
- If the following conditions occur, unplug the device from the wall outlet and bring it to qualified service personnel for repair.
 - The power cord or plug has become damaged or frayed.
 - Liquid has been spilled into the device.
 - The device has been exposed to rain or water.
 - The device has been dropped, or the cabinet has been damaged.
 - The device exhibits a distinct change in performance, indicating a need for service.
 - The device does not operate normally when the operating instructions are followed.
- Only adjust those controls that are covered in the operating instructions. Improper adjustment of other controls may result in damage that will require extensive work by a qualified technician to repair.

Specification

Function	Dual Video Capture Adapter
Connectors	
Video In	2 x HDMI Type A Female (Black)
USB Port	USB 3.2 Gen1 Type-B Male (Blue) Note: USB-B to USB-C and USB-B to USB-A cables included in the package.
Video Output	1 x HDMI Type A Female (PGM Video, Black)
Audio Inputs	1 x Balanced Analog Audio via XLR Connectors 1 x Unbalanced Audio via RCA Connectors
Video Resolution	
Video Input (HDMI 1.4b support)	720p50, 720p60, 1080p24, 1080p25, 1080p30, 1080p50, 1080p60, 2160p24, 2160p25, 2160p30
PGM Video Output (HDMI 1.4b support)	UVC Capture Enabled: 720p50, 720p60, 1080p24, 1080p25, 1080p30, 1080p50, 1080p60 (HDCP disabled)
	UVC Capture Disabled: 720p50, 720p60, 1080p24, 1080p25, 1080p30, 1080p50, 1080p60, 2160p24, 2160p25, 2160p30 (HDCP enabled)
Audio Sampling	16-bit PCM audio, 44.1KHz and 48KHz
UVC Output	Uncompressed 720p60, 1080p60 UVC Video Stream with UAC Audio (Uncompressed video stream is only available on USB3.1 connection)
Environmental	
Operating Temperature	0 - 40 °C
Storage Temperature	-20 – 60 °C
Humidity	0 - 80% RH, Non-Condensing
Minimum Hardware Requirement	PC/Mac: <ul style="list-style-type: none"> • CPU: Intel® i3 Dual Core 2.8Ghz or higher • RAM: 4GB or more • One USB-C Interface or USB-A Interface Smartphone*: <ul style="list-style-type: none"> • Android smartphone with UVC and USB-C Interface <p>Note: For detail UVC compatible device list, please review the following link of third part App.</p> http://www.camerasoft.com/supported-devices/
Connection	Bluetooth Low Energy (BLE) Technology

Appendix

Function	Dual Video Capture Adapter
OS Support	Windows 7 and later Mac OS X 10.13 and later Android 5.0.1 and later with UVC support Note: For Windows 7 users, please download and install the Win7_driver from on our website. To download the driver, see Downloading the Firmware Upgrade Package, page 47.
Physical Properties	
Housing	Metal
Weight	0.68 kg (1.50 lb)
Dimensions (L x W x H)	13.00 x 15.18 x 4.25 cm (5.12 x 5.98 x 1.67 in.)

Limited Warranty

IOGEAR warrants its hardware in the country of purchase against flaws in materials and workmanship for a Warranty Period of two [2] years (warranty period may vary in certain regions/countries) commencing on the date of original purchase. This warranty period includes the LCD panel of IOGEAR LCD KVM switches. Select products are warranted for an additional year (see A+ Warranty for further details). Cables and accessories are not covered by the Standard Warranty.

What is covered by the Limited Hardware Warranty

IOGEAR will provide a repair service, without charge, during the Warranty Period. If a product is defective, IOGEAR will, at its discretion, have the option to (1) repair said product with new or repaired components, or (2) replace the entire product with an identical product or with a similar product which fulfills the same function as the defective product. Replaced products assume the warranty of the original product for the remaining period or a period of 90 days, whichever is longer. When the products or components are replaced, the replacing articles shall become customer property and the replaced articles shall become the property of IOGEAR.

For the terms and conditions of this warranty, please go to <https://www.iogear.com/support/warranty>

Register online at <https://www.iogear.com/registration>

Technical Support

- For online technical support – including troubleshooting, documentation, and software updates: **www.iogear.com/support**
- For telephone support: **1-888-999-IOGEAR ext 4988 or 1-949-428-1111**
- Email at: **support@iogear.com**
- Visit: **www.iogear.com**

When you contact us, please have the following information ready beforehand:

- Product model number, serial number, and date of purchase
- Your computer configuration, including operating system, revision level, expansion cards, and software
- Any error messages displayed at the time the error occurred
- The sequence of operations that led up to the error
- Any other information you feel may be of help

EMC Information

FEDERAL COMMUNICATIONS COMMISSION INTERFERENCE STATEMENT:

This equipment has been tested and found to comply with the limits for a Class B digital service, pursuant to Part 15 of the FCC rules. These limits are designed to provide reasonable protection against harmful interference in a residential installation. Any changes or modifications made to this equipment may void the user's authority to operate this equipment. This equipment generates, uses, and can radiate radio frequency energy. If not installed and used in accordance with the instructions, may cause harmful interference to radio communications. However, there is no guarantee that interference will not occur in a particular installation.

This device complies with Part 15 of the FCC Rules. Operation is subject to the following two conditions: (1) this device may not cause harmful interference, and (2) this device must accept any interference received, including interference that may cause undesired operation.

If this equipment does cause harmful interference to radio or television reception, which can be determined by turning the equipment off and on, the user is encouraged to try to correct the interference by one or more of the following measures:

- Reorient or relocate the receiving antenna.
- Increase the separation between the equipment and receiver.
- Connect the equipment into an outlet on a circuit different from that to which the receiver is connected.
- Consult the dealer or an experienced radio/TV technician for help.

FCC Caution: Any changes or modifications not expressly approved by the party responsible for compliance could void the user's authority to operate this equipment.

The frequency and maximum EIRP Power in EU are listed as below
2402MHz~2480MHz:0.32dBm

You are cautioned that changes or modifications not expressly approved by the part responsible for compliance could void the user's authority to operate the equipment.

FCC RF Radiation Exposure Statement:

1. This Transmitter must not be co-located or operating in conjunction with any other antenna or transmitter.
2. This equipment complies with FCC RF radiation exposure limits set forth for an uncontrolled environment. This equipment should be installed and operated with a minimum distance of 20 centimeters between the radiator and your body.

Radiation Exposure Statement: This equipment complies with IC radiation exposure limits established for an uncontrolled environment. This equipment must be installed and operated with a minimum distance of 20 cm between the radiation source and your body.

RoHS

This product is RoHS compliant.

