



## Quick Start Guide

18.5" Widescreen Short Depth VGA LCD  
KVM Console

---

**GCL1900W**  
PART NO. Q1602

# Package Contents

1

- 1 x 18.5" Widescreen Short Depth VGA LCD KVM Console
- 1 x USB VGA KVM Cable
- 1 x Firmware Upgrade Cable
- 1 x Grounding Wire
- 1 x Power Cord
- 1 x Standard Rack Mounting Kit
- 1 x Quick Start Guide

## System Requirements

### Computers:

- VGA, SVGA, or MultiSync video graphics card with an HDB-15 port
- Type-A USB port
- Audio port (optional)

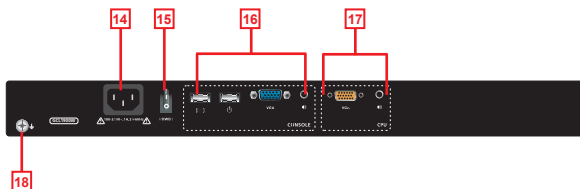
### External Console:

- VGA monitor
- Standard 2 or 3-button wired USB mouse
- Standard 104-key wired USB keyboard
- Speaker (optional)

## Front View



## Rear View

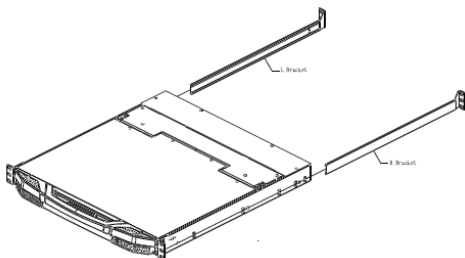


1. Upper Handle with Release Bar
2. LCD Module
3. LCD Controls
4. LCD ON/OFF Button
5. Firmware Upgrade Switch
6. Firmware Upgrade Port
7. Reset Switch
8. Lock LEDs
9. Rack Mounting tabs

10. Power LED
11. USB Port
12. Touchpad
13. Keyboard Module
14. Power Socket
15. Power Switch
16. External Console Section
17. KVM Port Section to CPU
18. Grounding Terminal

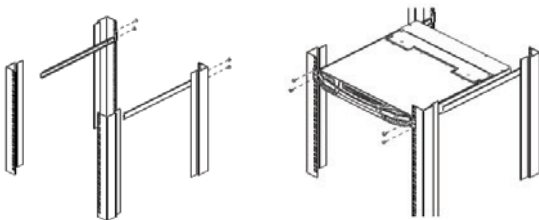
## Standard Rack Mounting

1. Please use the included standard rack mounting kit to mount the GCL1900W in a rack with a depth of 16.5"-28.3"



### Note:

- a. We highly recommend two people to mount the module: one to hold it in place and the other person to screw the module in
  - b. The included standard rack mounting kit does not include screws or cage nuts. Please contact your sales representative for additional screws or cage nuts
2. Attach the left and right mounting brackets to the back of the rack, installing four screws into the tabs to secure the brackets in place



3. While one person inserts the GCL1900W into place by sliding its left and right side bars into the mounting brackets (on the rack), have the second person install four screws in the front tabs to secure the module to the front of the rack

### Note:

Please allow at least 2" on each side for proper ventilation and at least 5" at the back for the power cord and cable clearance

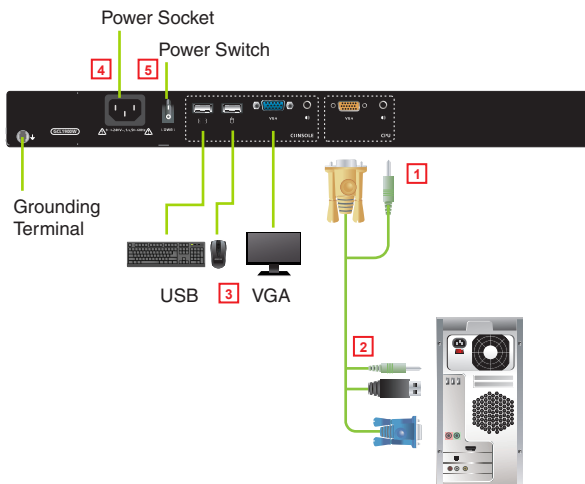
## Connecting Cables

1. Connect the VGA and audio connectors of the included KVM cable into the KVM ports located in the CPU section on the rear of the GCL1900W

Note:

The GCL1900W supports speakers only. It does not support microphones. Connect the KVM cable's speaker jack (green) to the GCL1900W's audio port

2. Connect the USB, VGA and audio connectors of the KVM cable into their respective ports of a computer
3. If an external console is needed, connect the keyboard, mouse, VGA monitor and speakers (microphone not supported) into their respective ports on the Console Section of the GCL1900W
4. Connect the GCL1900W to an AC power source using the included power cord
5. Turn on the GCL1900W power

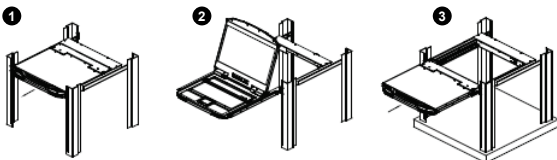


## Opening the Console

1. Pull on the Release bar on the Upper Handle
2. Slide the console module out until it clicks in place then raise the LCD Module lid

## Closing the Console

3. Lower the LCD Module until it lies flat and slide the full console in



## Operating Precautions

The maximum load bearing capacity of the keyboard module is 66 lb. Failure to heed below information can result in damage to the keyboard module

<p>The diagram shows a person's hands resting lightly on the keyboard module of the console. The console is open, and the person is using the keyboard.</p>	<p><b>Right!</b></p> <p>Rest your hands and arms lightly on the keyboard module as you work.</p>
<p>The diagram shows a person leaning their body weight on the keyboard module. A diagonal line with an arrow pointing to the keyboard module indicates this is an incorrect and potentially damaging action.</p>	<p><b>Wrong!</b></p> <ul style="list-style-type: none"> <li>• DO NOT lean your body weight on the keyboard module</li> <li>• DO NOT place heavy objects on the keyboard module.</li> </ul>

Combination	Action
[Ctrl][Alt][Shift][P][C][Enter]	To select normal mode (PC, etc)
[Ctrl][Alt][Shift][M][A][C][Enter]	To select Mac
[Ctrl][Alt][Shift][S][U][N][Enter]	To select SUN
[Ctrl][Alt][Shift][L][Enter]	Activates the Firmware Upgrade Mode  Note: this Hotkey sequence only works when the Firmware Upgrade Recovery Switch is in NORMAL position
[Ctrl][Alt][Shift][L][Enter]	Enable Local (LCD) console  Disable 2nd console or external console video
[Ctrl][Alt][Shift][R][Enter]	Enable 2nd console or external video  Disable Local (LCD) console
[Ctrl][Alt][Shift][L][R][Enter] or [Ctrl][Alt][Shift][R][L][Enter]	Enable both consoles (default)
[Ctrl][Alt][Shift][U][M][Enter]	Configures the front USB port to mouse mode (Mouse functionality is immediate upon switching to USB mouse mode)  USB mouse mode [U][M] is the default
[Ctrl][Alt][Shift][U][P][Enter]	Configures the front USB Port to peripheral mode
[Ctrl][Alt][Shift][F4][Enter]	Print the switch's current settings via a text editor or word processor
[Ctrl][Alt][Shift][F11][F][Enter]	Set the KVM port to USB full speed
[Ctrl][Alt][Shift][F11][L][Enter]	Set the KVM port to USB low speed

## Limited Warranty

This product carries a 3 Year Limited Warranty. For the terms and conditions of this warranty, please go to <https://www.iogear.com/support/warranty>

Register online at <https://www.iogear.com/register>

### Important Product Information

Product Model \_\_\_\_\_

Serial Number \_\_\_\_\_



## Contact

### **WE'RE HERE TO HELP YOU! NEED ASSISTANCE SETTING UP THIS PRODUCT?**

Make sure you:

1. Visit [www.iogear.com](http://www.iogear.com) for more product information
2. Visit [www.iogear.com/support](http://www.iogear.com/support) for live help and product support

### **IOGEAR**

<https://iogear.custhelp.com>

[support@iogear.com](mailto:support@iogear.com)

[www.iogear.com](http://www.iogear.com)

## EMC Information

### **Federal Communications Commission Statement (FCC) Statement:**

This equipment has been tested and found to comply with the limits for a Class A digital service, pursuant to Part 15 of the FCC rules. These limits are designed to provide reasonable protection against harmful interference in a residential installation. Any changes or modifications made to this equipment may void the user's authority to operate this equipment. This equipment generates, uses, and can radiate radio frequency energy. If not installed and used in accordance with the instructions, may cause harmful interference to radio communications. However, there is no guarantee that interference will not occur in a particular installation. If this equipment does cause harmful interference to radio or television reception, which can be determined by turning the equipment off and on, the user is encouraged to try to correct the interference by one or more of the following measures:

- Reorient or relocate the receiving antenna.
- Increase the separation between the equipment and receiver.
- Connect the equipment into an outlet on a circuit different from that to which the receiver is connected.
- Consult the dealer or an experienced radio/TV technician for help.

### **CE Statement**

This device has been tested and found to comply with the following European Union directives: Electromagnetic Capability (2004/108/EC), Low Voltage (2006/95/EC) and R&TTED (1999/5/EC).