



User Manual

2-Port Cable KVM Switch with HDMI® Support

GCS2HU/GCS62HU
PART NO. M1130-a

www.iogear.com

© 2023 IOGEAR® Part No. M1130-a

All rights reserved. IOGEAR and the IOGEAR logo are registered trademarks of Aten Technology, Inc. HDMI and related logo are trademarks or registered trademarks of HDMI Licensing Administrator, Inc. (or affiliate) in the United States and other countries. Windows is either a registered trademark or trademark of Microsoft Corporation in the United States and/or other countries. Mac and macOS are a trademark of Apple Inc., registered in the U.S. and other countries. All other trademarks, names, logos and brands are the properties of their respective owners. Reproduction in whole or in part without permission is prohibited.

Table of Contents

Package Contents	4	Firmware Upgrade	19
System Requirements	5	Upgrade Fail	23
Overview	6	Compliance Information	24
Standard Installation	7	Limited Warranty	25
Advanced Installation	9	Contact	26
LED Indication	12		
Port Switching	13		
Hotkeys Summary Table	14		
Hotkeys Summary Table Cont.	15		
Autoscan Interval Table	16		
Mac Keyboard Emulation	17		
Factory Default Settings	18		

Package Contents

- 1 x 2-Port Cable KVM Switch with HDMI Support
- 1 x Manual
- 1 x Warranty Card

System Requirements

Console

- 1 x HDMI display
- 1 x Standard 104 Key wired USB keyboard
- 1 x Standard 2 or 3 button wired mouse
- Powered speakers and microphone (optional)

Computers

- 1 x HD port
- 2 x USB ports
- 3.5mm audio ports (optional)

Operating System

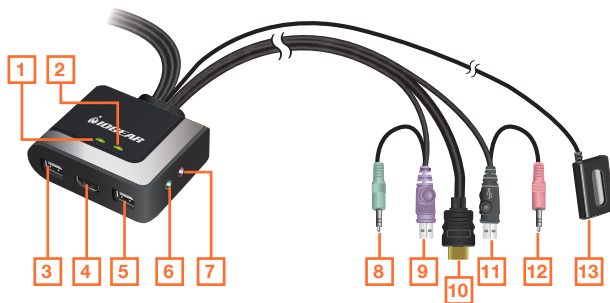
- Windows Vista®
- Windows® 7
- Windows® 8.1
- Windows® 10
- Mac OS® X or greater
- Sun Solaris workstation
- Linux®, UNIX and other USB supported systems*

*Additional drivers and support may be needed



Overview

1. PC 1 LED
2. PC 2 LED
3. Console USB Mouse Port
4. Console HD Port
5. Console USB Keyboard Port
6. Console Speaker Port
7. Console Microphone Port
8. CPU Audio connector
9. CPU USB Keyboard connector
10. CPU HD connection
11. CPU USB Keyboard connector
12. CPU Microphone connector
13. Remote Switch Button



Standard Installation

Step 1

Please make sure your computers and monitor are powered off before you start.

Step2

Connect the HD cable from your monitor to the console HD monitor port. Then, turn on the monitor.



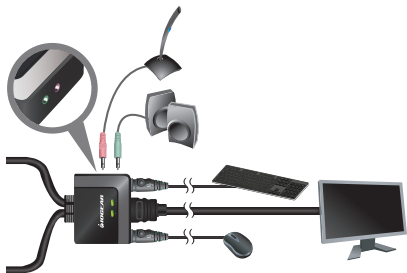
Step 3

Connect your USB keyboard and mouse to the console USB keyboard port and console USB mouse port.



Step 4

Connect your powered speaker and microphone to the console audio port and console microphone port.

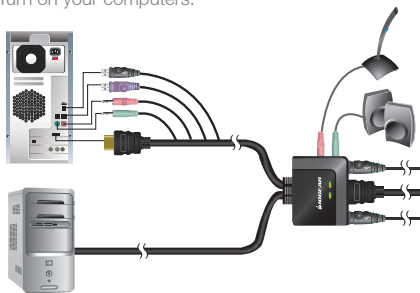


Step 5

Connect a set of your molded KVM cable to each of your computers – HD cable to the HD output, USB cables to open USB ports from your computer, audio cable to your audio output and mic. cable to the mic. Input.

Final Step

Turn on your computers.



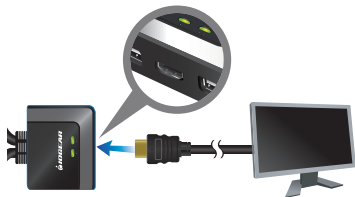
Advanced Installation

Step 1

Please make sure your computers and monitor are powered off before you start.

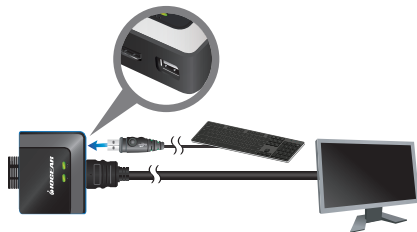
Step2

Connect the HD cable from your monitor to the console HD monitor port. Then, turn on the monitor.



Step 3

Connect your USB keyboard to the console USB keyboard port.



Step 4

Connect a powered USB hub to the console mouse port, then connect the mouse to any available USB port in the hub. Then, connect any peripherals that you want to share between your computers to the other available USB ports in the hub.

Note: Please make sure mouse emulation has been disabled for this setup to function correctly.



Step 5

Connect your powered speaker and mic. to the console audio port and console mic. port.

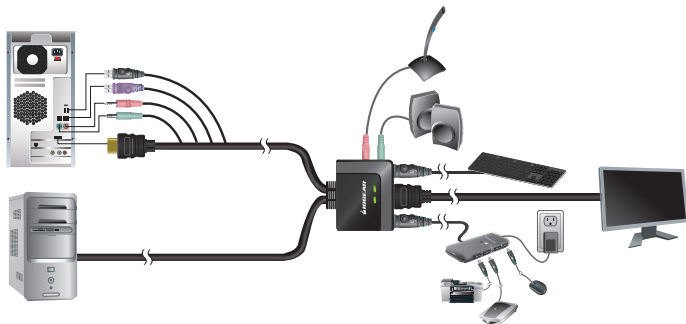


Step 6

Connect a set of your molded KVM cable to each of your computers – HD cable to the HD output, USB cables to open USB ports from your computer, audio cable to your audio output and mic. cable to the mic. input.

Final Step

Turn on your computers.



LED Indication

- LED will light up in Green indicating port on focus.
- Both LEDs will be flashing together when the KVM is in Firmware Upgrade Mode.

Port Switching

You can switch port via remote switch button, mouse or hotkey commands.

Port Switching via Remote Switch Button

Simply press the remote switch button once to switch focus to the next port.

Port Switching via Mouse

Simply press scroll wheel button twice rapidly to switch focus to the next port.*

*Note: This feature requires a mouse that has a scroll wheel. Also, this feature can only be used when both Mouse Emulation Mode and Mouse Port-Switching Mode are enabled.

Port Switching via Hotkey Commands

To trigger a Hotkey Mode, simply press [Scroll Lock] [Scroll Lock]. Please refer to Hotkey Summary Table for details.

**Note: If there is a conflict using [Scroll Lock] [Scroll Lock] sequence, you can change to the alternative sequence [Ctrl] [Ctrl] by press and holding the remote switch button for 3 seconds. When you press and hold the remote switch button for 3 second when the sequence is [Ctrl] [Ctrl], it will change the sequence back to [Scroll Lock] [Scroll Lock].

Hotkeys Summary Table

Hotkey combination	Description
[Scroll Lock] [Scroll Lock] + or [Ctrl] [Ctrl]* + *Note: If alternative hotkey sequence is chosen	[Enter]
	[k] [Enter]
	[s] [Enter]
	[a] [Enter]
	[a] [Enter] [n]
	[x] [Enter]
	[m] [Enter]
	[n] [Enter]
	[d] [Enter]
	[w] [Enter]
	[F2] [Enter]
Switch KVM and audio focus to the next port	
Switch KVM focus to the next port	
Switch audio focus to the next port	
Activate Autoscan Mode. It will toggle between the two computers every 5 seconds	
Activate Autoscan Mode. It will toggle between the two computers with the specific time depending on the interval [n] that you have input. Please see Autoscan Interval Table for details.	
Change hotkey sequence to the alternative sequence	
Enable/disable mouse emulation	
Enable/disable Keyboard emulation Note: Disabling keyboard emulation allows the use of gaming keyboards.	
Capture and store monitor's EDID on specific port	
Enable/disable mouse port-switching function Note: If you enable this feature when Mouse Emulation Mode is disabled, Mouse Emulation Mode will be enabled automatically	
Enable Mac keyboard emulation	

Hotkeys Summary Table Cont.








Hotkey combination		Description
[Scroll Lock] [Scroll Lock] + or [Ctrl] [Ctrl]* + *Note: If alternative hotkey sequence is chosen	[F4] [Enter]	List out current settings Note: Please have a Notepad or word document opened before you trigger this function.
	[F5] [Enter]	Perform a USB keyboard and mouse reset
	[F6][nn] [Enter]	Sets the keyboard language layout. Note: nn is a two digit number that represents one of the following keyboard languages. US English 33; French 08; Japanese 15.
	[F10] [Enter]	Auto detect keyboard operating system
	[r] [Enter]	Resets to factory default settings

Autoscan Interval Table

n	Description
1	3 seconds
2	5 seconds (default)
3	10 seconds
4	20 seconds

Mac Keyboard Emulation

The PC compatible (101/104 key) keyboard can emulate the functions of the Mac keyboard. The emulation mappings are listed in the table below.

PC Keyboard	Mac Keyboard	[Alt]	Alt
[Shift]	Shift	[Print Screen]	F13
[Ctrl]	Ctrl	[Scroll Lock]	F14
	⌘		=
[Ctrl] [1]		[Enter]	Return
[Ctrl] [2]		[Backspace]	Delete
[Ctrl] [3]		[Insert]	Help
[Ctrl] [4]		[Ctrl] 	F15

*Note: When using key combinations, press and release the first key (Ctrl), then press and release the second key.

Factory Default Settings

Function	Default Setting
Autoscan Interval	5 seconds
Hotkeys	[Scroll Lock] [Scroll Lock]
Keyboard Operating Platform	PC compatible
Mouse Emulation	On
Mouse Port-Switching	Off
Keyboard Emulation	On

Firmware Upgrade

Note: In order to perform a firmware upgrade, you need to use a computer that's not connected to the KVM.

Step 1

Go to www.iogear.com to download the latest available firmware or the specific firmware that you wish to upgrade to.

Step 2

Please disconnect all computers from the KVM.

Step 3

Press and hold the remote switch button of the KVM while connecting the 2 USB connections of a set of KVM cable to the computer that you will use to perform the firmware upgrade. When you see the 2 LEDs are flashing on the KVM, you can now release the remote switch button.

Note: The computer that you use to perform the firmware upgrade must be powered on before you connect the 2 USB connections to it.

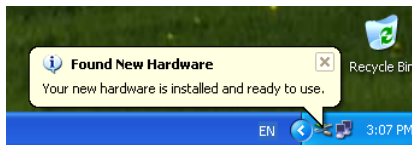
Step 4

Windows will now install all the required drivers. You may see the below message popup in tray icon area.



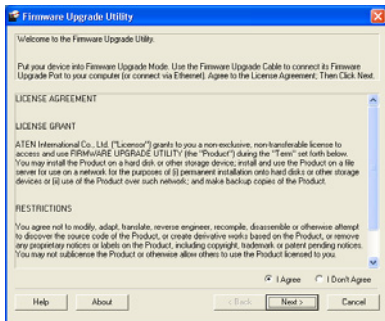
Step 5

After you see the below message "Your new hardware is installed and ready to use.", extract the downloaded file with WinRAR or compatible software. Then double click on the execute file to begin with the Firmware Upgrade Utility.



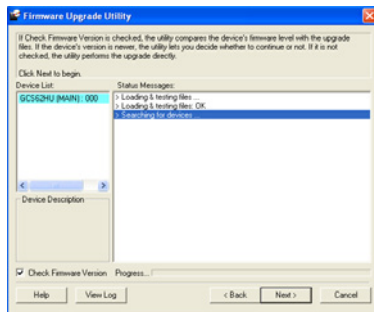
Step 6

Read the License Agreement and click “I Agree” then click “Next” if you wish to continue with the firmware upgrade. Otherwise, click “Cancel” to exit.



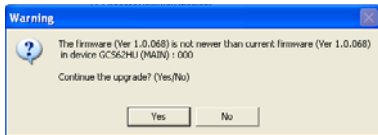
Step 7

Choose the correct KVM that you wish to perform firmware upgrade from the “Device List” and then click “Next” to continue. Then the Firmware Upgrade Utility will verify if there is a KVM connected to the computer by the firmware upgrade cable. (Check Firmware Version checkbox is optional)



Step 8

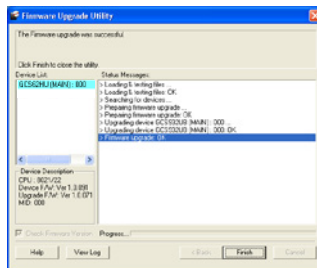
If you have checked the “Check Firmware Version” checkbox, then the utility will check the current firmware that is on your KVM. If the current firmware is newer than the firmware that you wish to upgrade to, a window will popup and prompt you to ask if you wish to proceed. Simply click “Yes” to start the upgrade and “No” to cancel the upgrade.



Note: If you did not check the “Check Firmware Version” checkbox, utility will perform the upgrade automatically no matter what version of firmware you have in the KVM.

Step 9

When the firmware upgrade is done, you will see “Firmware upgrade OK” in the “Status Messages” window. Then simply click “Finish” to complete the whole firmware upgrade process.



Final Step

Now the KVM will reset by itself and it will be ready for usage after the reset.

Upgrade Fail

Unplug the 2 USB connections from your computer that has performed the firmware upgrade. Then, repeat the firmware upgrade process by following the procedure of Firmware Upgrade section starting from step 3.

Compliance Information

FCC Statement

This equipment has been tested and found to comply with the limits for a Class B digital device, pursuant to Part 15 of the FCC Rules. These limits are designed to provide reasonable protection against harmful interference when the equipment is operated in a commercial environment. This equipment generates, uses, and can radiate radio frequency energy and, if not installed and used in accordance with the instruction manual, may cause harmful interference to radio communications. Operation of this equipment in a residential area is likely to cause harmful interference in which case the user will be required to correct the interference at his own expense.

The device complies with Part 15 of the FCC Rules. Operation is subject to the following two conditions:

- (1) this device may not cause harmful interference, and
- (2) this device must accept any interference received, including interference that may cause undesired operation.

Limited Warranty

IN NO EVENT SHALL THE DIRECT VENDOR'S LIABILITY FOR DIRECT, INDIRECT, SPECIAL, INCIDENTAL OR CONSEQUENTIAL DAMAGES RESULTING FROM THE USE OF THE PRODUCT, DISK, OR ITS DOCUMENTATION EXCEED THE PRICE PAID FOR THE PRODUCT.

The direct vendor makes no warranty or representation, expressed, implied, or statutory with respect to the contents or use of this documentation, and especially disclaims its quality, performance, merchantability, or fitness for any particular purpose. The direct vendor also reserves the right to revise or update the device or documentation without obligation to notify any individual or entity of such revisions, or updates. For further inquiries please contact IOGEAR.



Contact

WE'RE HERE TO HELP YOU! NEED ASSISTANCE SETTING UP THIS PRODUCT?

Make sure you:

1. Visit www.iogear.com for more product information
2. Visit www.iogear.com/support for live help and product support

IOGEAR

www.iogear.com
iogear.custhelp.com
support@iogear.com







