



User Manual

Universal Wireless-n Adapter

GWU627

PART NO. M1161-b

www.iogear.com

© 2018 IOGEAR® Part No. M1161-b

IOGEAR, the IOGEAR logo, are trademarks or registered trademarks of IOGEAR. Microsoft and Windows are registered trademarks of Microsoft Corporation. All other brand and product names are trademarks or registered trademarks of their respective holders. IOGEAR makes no warranty of any kind with regards to the information presented in this document. All information furnished here is for informational purposes only and is subject to change without notice. IOGEAR assumes no responsibility for any inaccuracies or errors that may appear in this document.

Table of Contents

Package Contents	4	Firmware Upgrade	46
System Requirements	5	Compliance Information	51
Product Overview	6	SJ/T 11364-2006	53
Installation	8	Limited Warranty	54
Installation without WPS - Windows XP	10	Contact	55
Installation without WPS - Windows Vista	16		
Installation without WPS - Windows 7	24		
Installation without WPS - Linux	32		
Installation without WPS - Mac	37		
Manual Set Up	42		

Package Contents

- 1x GWU627 client adapter
- 1x USB power cable
- 1x Ethernet cable
- 1x Power adapter with USB port
- 1x User Manual
- 1x Warranty Card

System Requirements

- Operating System
 - Windows XP, Windows Vista, Windows 7
 - Mac OS X v10.4 and above
- Wireless network with WPS setup
- Wireless network without WPS setup and computer

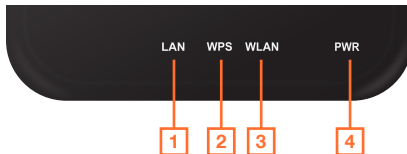
Product Overview

- | | |
|-------------------|--|
| 1. Ethernet Port | The Ethernet port allows a LAN connection through Cat 5 cables. Supports auto-sensing at 10/100M speed, half/ full duplex. |
| 2. Mini USB Power | The Mini USB cable provides power. |
| 3. WPS Button | Push and hold the WPS button for 5~10 seconds to enable the WPS feature. |
| 4. Reset Button | Push and hold the reset button for 5~10 seconds to reset the adapter to factory default settings. |



LED Indicator State Description

- | | |
|--------------|---|
| 1. Power LED | On - The WLAN Broadband Router is powered on.
Off - The WLAN Broadband Router is powered off. |
| 2. WLAN LED | Flashing - WLAN is transmitting or receiving data.
Off - WLAN is off |
| 3. WPS LED | Flashing - The WPS feature is enables and in use.
Off - The WPS feature is not in use. |
| 4. LAN LED | Flashing - Data is transmitting or receiving on the LAN interface.
On - Port linked.
Off - No link. |



Installation

Wireless Setup with WPS

Step 1: Power on your Universal WiFi Adapter using **either** of these methods:

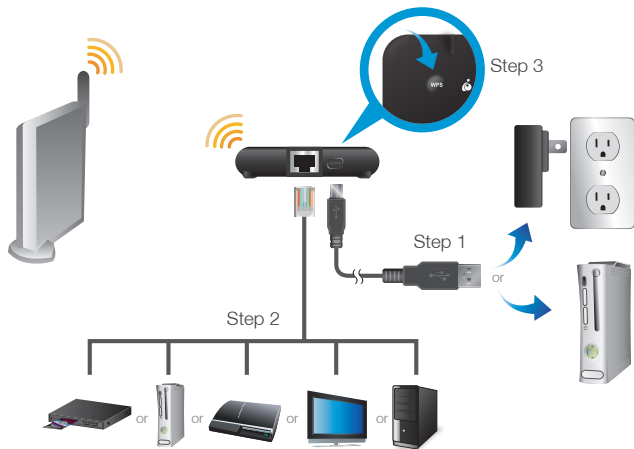
- Connect the mini-USB cable to a device that provides Type A USB connection. Make sure that the device where you connect the USB cable is powered on.
- Connect the WiFi adapter to an electrical outlet with the included power adapter.

Note: It will take about 50 seconds to complete the boot-up sequence. When complete, PWR (power) LED will be active, and the WLAN Activity LED will be blinking to show the WLAN interface is enabled.

Step 2: Use the included RJ-45 Ethernet cable to connect the WiFi adapter with your device such as Blu-ray player, HDTV, or game console.

Step 3: Refer to your wireless router's user manual to enable the WPS function, then press "WPS" button on the top of WiFi adapter.

Your installation is complete. If asked for the type of connection, make sure "WIRED" is selected on your device.



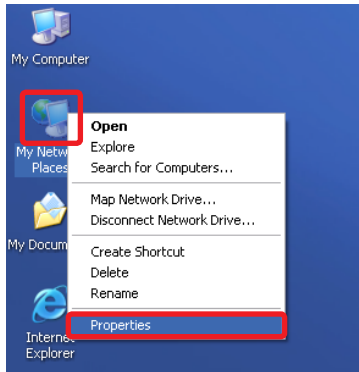
Installation without WPS - Windows XP

Step 1: Turn off your computer's wireless connection (if applicable) and disconnect the Ethernet cable currently connect to your computer (if applicable).

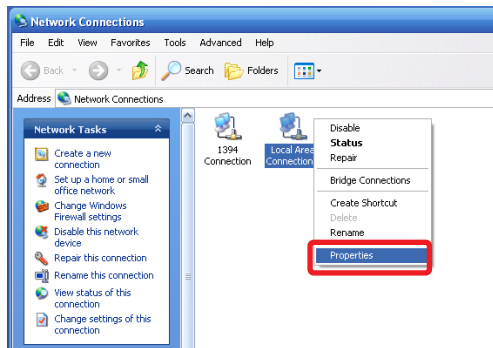
Step 2: Use both the included RJ-45 Ethernet cable and the USB cable to connect the WiFi adapter with your computer.

Step 3: Set your computer with a static IP address.

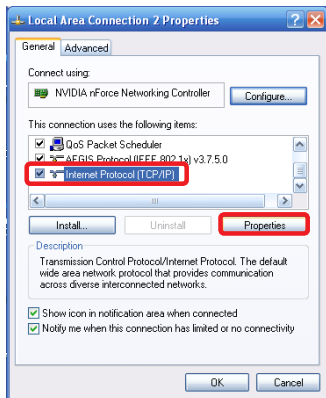
- a. Right click on **"My Network Places"** and select **"Properties"**.



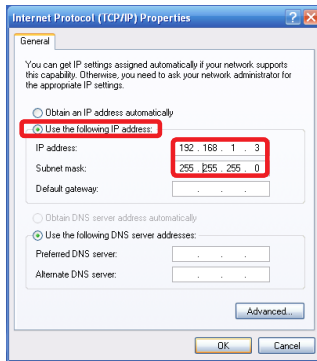
b. Next, right click on **“Local Area Connection”** and select **“Properties”**.



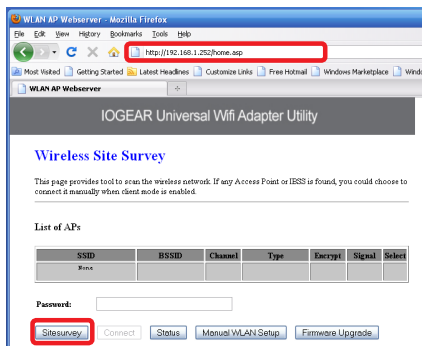
- c. Select **“Internet Protocol (TCP/IP)”** then select **“Properties”**.



- D. Select **“Use the following IP address”** and enter 192.168.1.3 in the IP address section. Next enter 255.255.255.0 in the Subnet Mask. Click OK.



Step 4: Open your web browser and enter **192.168.1.252**. This will bring up the configuration utility. Click **“Site Survey”** to scan for your wireless network.



Step 5: Select the AP you want to connect to and enter the password if the network is secured. Click the **“Connect”** button to establish the connection.

If your network security settings are set to not broadcast your SSID, then you will need to manually set up the SSID and the wireless security (WEP or WPA). (Please see Page. 37)

IOGEAR Universal Wifi Adapter Utility

Wireless Site Survey

This page provides tool to scan the wireless network. If any Access Point or IBSS is found, you could choose to connect it manually when client mode is enabled.

List of APs

SSID	BSSID	Channel	Type	Encrypt	Signal	Select
Office	00f0b38b49	9 (E)	AP	WEP	52	

Password:

Site survey

Connect

Status

Manual WLAN Setup

Firmware Upgrade

IOGEAR Universal Wifi Adapter Utility

Connection Successful!



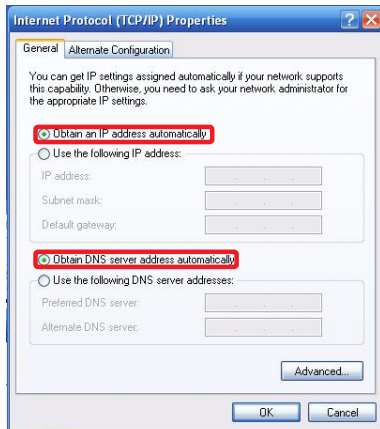
Step 6: Close your browser and change the network settings on your computer back to DHCP (Obtain an IP address Automatically & Obtain DNS server address automatically). Refer to steps 3a through 3d. Also do not forget to enable your wireless connection if you disabled it.

Step 7: Disconnect the Ethernet and USB cables from your computer.

Step 8: Use the included RJ-45 Ethernet cable to connect the WiFi adapter with your device such as a Blu-Ray player, HDTV, or game console.

Step 9: Power on your adapter using the USB cable or AC adapter.

The installation is complete. Your device is now wireless. If the device asks for the type of internet connection, make sure "WIRED" is selected.



Installation without WPS - Windows Vista

Step 1: Turn off your computer's wireless connection (if applicable) and disconnect the Ethernet cable currently connect to your computer (if applicable).

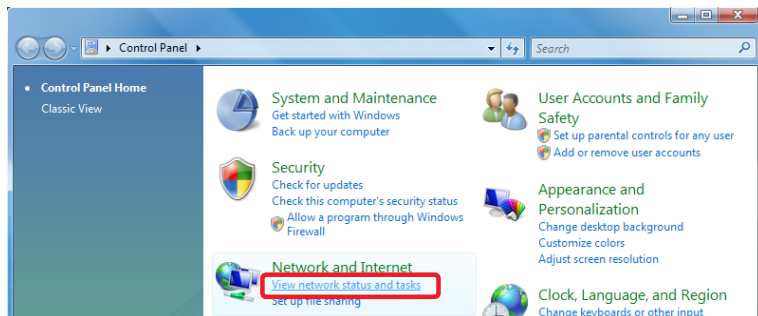
Step 2: Use both the included RJ-45 Ethernet cable and the USB cable to connect the WiFi adapter with your computer.

Step 3: Set your computer with a static IP address.

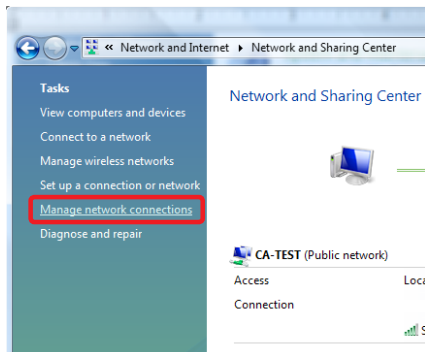
a. Click the start button, then click on Control Panel.



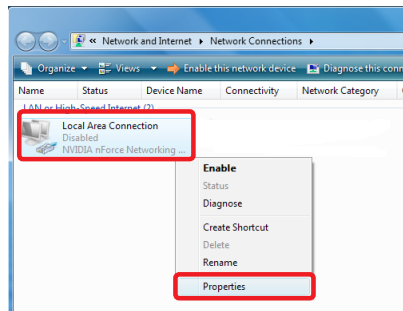
b. Under Network and Internet, click **“View network status and tasks”**.



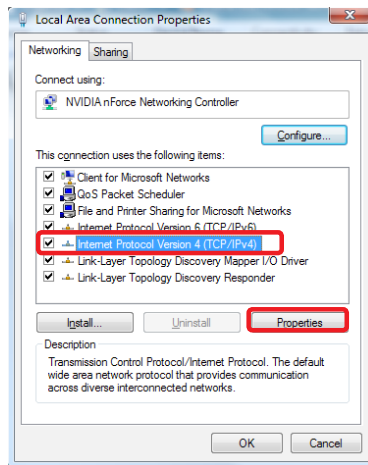
c. Under Tasks in the left pane, click **“Manage network connections”**.



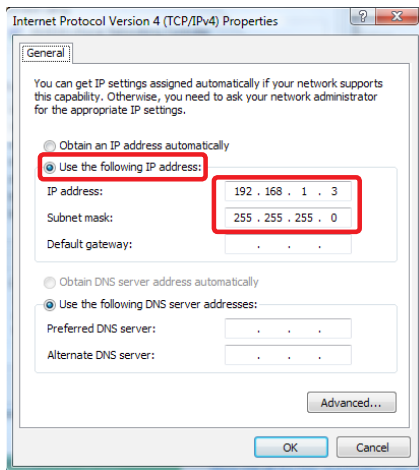
d. Next, right click on **“Local Area Connection”** and click **“Properties”**.



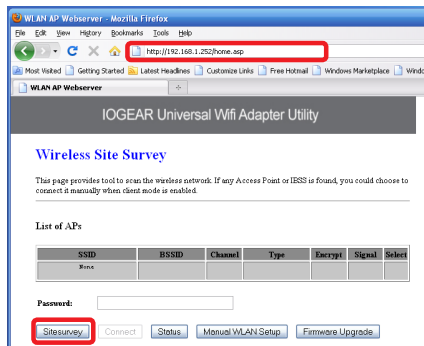
- e. Next, select **“Internet Protocol Version 4 (TCP/IPv4)”** and click **“Properties”**



- f. Select **“Use the following IP address”** and enter **192.168.1.3** in the IP address section. Next enter **255.255.255.0** in the Subnet Mask. Click OK.



Step 4: Open your web browser and enter **192.168.1.252**. This will bring up the configuration utility. Click “**Site Survey**” to scan for your wireless network.



Step 5: Select the AP you want to connect to and enter the password if the network is secured. Click the **“Connect”** button to establish the connection.


If your network security settings are set to not broadcast your SSID, then you will need to manually set up the SSID and the wireless security (WEP or WPA). (Please see Page. 37)

IOGEAR Universal Wifi Adapter Utility

Wireless Site Survey

This page provides tool to scan the wireless network. If any Access Point or IBSS is found, you could choose to connect it manually when client mode is enabled.

List of APs

SSID	BSSID	Channel	Type	Encrypt	Signal	Select
Office	00F0E3B8b49	9 (E)	AP	WEP	52	

Password:

Site survey **Connect** Status Manual WLAN Setup Firmware Upgrade

IOGEAR Universal Wifi Adapter Utility

Connection Successful!

OK

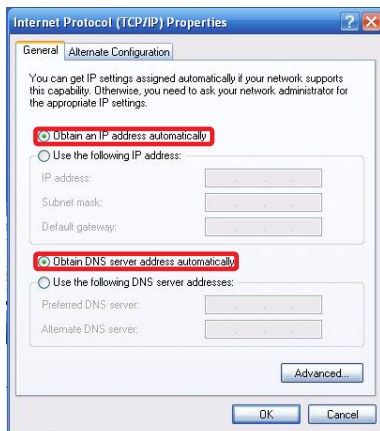
Step 6: Close your browser and change the network settings on your computer back to DHCP (Obtain an IP address Automatically & Obtain DNS server address automatically). Refer to steps 3a through 3d. Also do not forget to enable your wireless connection if you disabled it.

Step 7: Disconnect the Ethernet and USB cables from your computer.

Step 8: Use the included RJ-45 Ethernet cable to connect the WiFi adapter with your device such as a Blu-Ray player, HDTV, or game console.

Step 9: Power on your adapter using the USB cable or AC adapter.

The installation is complete. Your device is now wireless. If the device asks for the type of internet connection, make sure “WIRED” is selected.



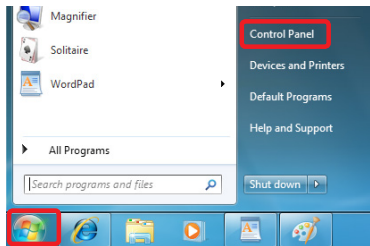
Installation without WPS - Windows 7

Step 1: Turn off your computer's wireless connection (if applicable) and disconnect the Ethernet cable currently connect to your computer (if applicable).

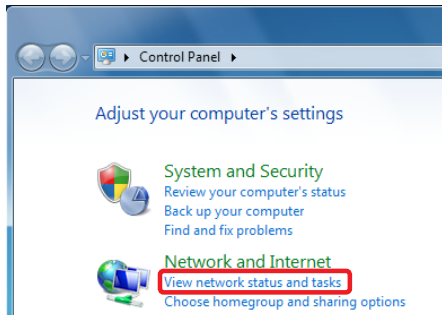
Step 2: Use both the included RJ-45 Ethernet cable and the USB cable to connect the WiFi adapter with your computer.

Step 3: Set your computer with a static IP address.

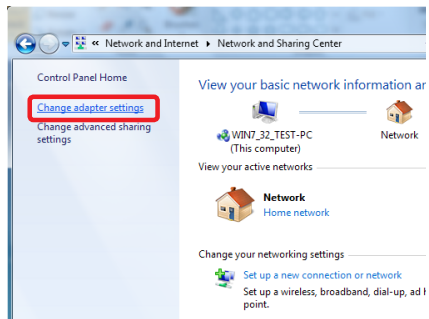
a. Click the start button, the click on **Control Panel**.



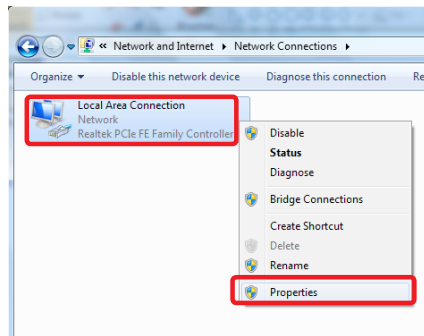
b. Under Network and Internet, click **“View network status and tasks”**.



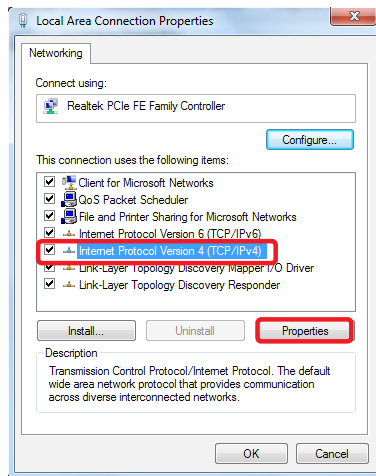
c. Under Tasks in the left pane, click **“Change Adapter Settings”**.



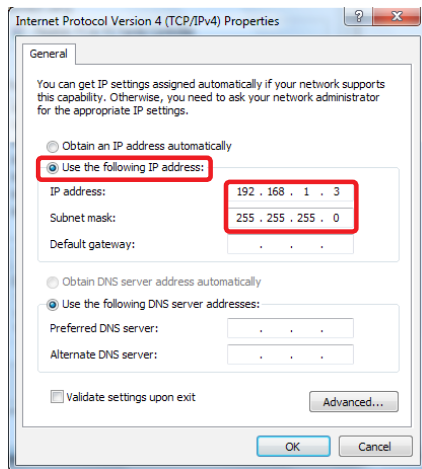
d. Next, right click on **“Local Area Connection”** and click **“Properties”**.



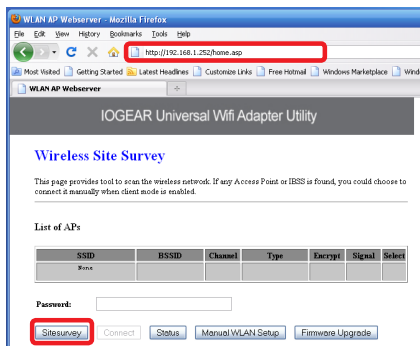
- e. Next, select **“Internet Protocol Version 4 (TCP/IPv4)”** and click **“Properties”**



- f. Select **“Use the following IP address”** and enter **192.168.1.3** in the IP address section. Next enter **255.255.255.0** in the Subnet Mask. Click OK.



Step 4: Open your web browser and enter **192.168.1.252**. This will bring up the configuration utility. Click **“Site Survey”** to scan for your wireless network.



Step 5: Select the AP you want to connect and enter the password if the network is secured. Click **“Connect”** button to establish the connection.

If your network security settings are set to not broadcast your SSID, then you will need to manually set up the SSID and the wireless security (WEP or WPA). (Please see Page. 37)

IOGEAR Universal Wifi Adapter Utility

Wireless Site Survey

This page provides tool to scan the wireless network. If any Access Point or IBSS is found, you could choose to connect it manually when client mode is enabled.

List of APs

SSID	BSSID	Channel	Type	Encrypt	Signal	Select
Office	00E838b49	9 (B)	AP	WEP	52	

Password:

Site survey

Connect

Status

Manual WLAN Setup

Firmware Upgrade

IOGEAR Universal Wifi Adapter Utility

Connection Successful!

OK

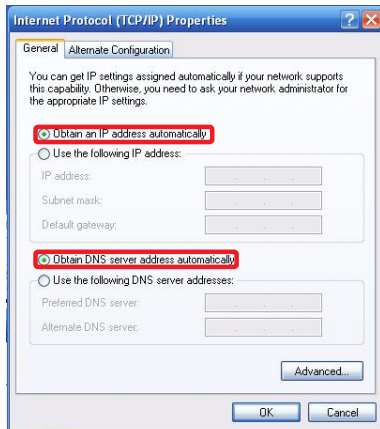
Step 6: Close your browser and change the network settings on your computer back to DHCP (Obtain an IP address Automatically & Obtain DNS server address automatically). Refer to steps 3a through 3d. Also do not forget to enable your wireless connection if you disabled it.

Step 7: Disconnect the Ethernet and USB cables from your computer.

Step 8: Use the included RJ-45 Ethernet cable to connect the WiFi adapter with your device such as a Blu-Ray player, HDTV, or game console.

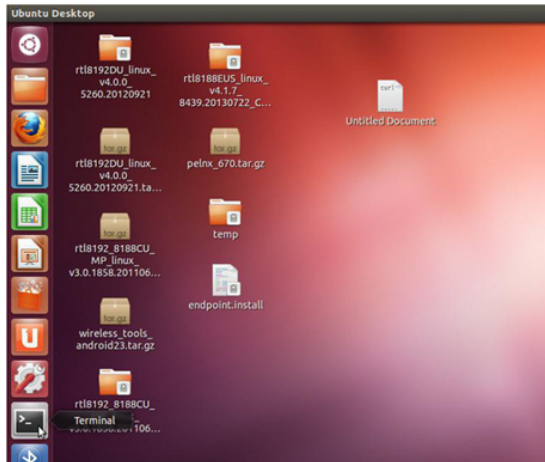
Step 9: Power on your adapter using the USB cable or AC adapter.

The installation is complete. Your device is now wireless. If the device asks for the type of internet connection, make sure “WIRED” is selected.



Installation without WPS - Linux

Step 1: Open the Terminal on Ubuntu



Step 2: Assign one static IP to the Ethernet port. The IP segment should be 192.168.1.x (x is any number from 1 through 255 that remains open in this segment). The example here is using 192.168.1.2

Step 3: Execute command below
sudo ifconfig

This command is to identify available Ethernet interface on your LINUX, ethX, where X represents a numeric value. In our example, it appears as eth0

```
root@RDubuntu: /home/rdubuntu/Pictures# sudo ifconfig
eth0      Link encap:Ethernet  HWaddr 00:16:36:42:d3:d0
          inet addr:192.168.101.125  Bcast:192.168.101.255  Mask:255.255.255.0
          inet6 addr: fe80::216:36ff:fe42:d3d0/64 Scope:Link
          UP BROADCAST RUNNING MULTICAST  MTU:1500  Metric:1
          RX packets:4764 errors:0 dropped:0 overruns:0 frame:0
          TX packets:5188 errors:0 dropped:0 overruns:0 carrier:0
          collisions:0 txqueuelen:1000
          RX bytes:971648 (971.6 KB)  TX bytes:3886740 (3.8 MB)

lo        Link encap:Local Loopback
          inet addr:127.0.0.1  Mask:255.0.0.0
          inet6 addr: ::1/128 Scope:Host
          UP LOOPBACK RUNNING  MTU:16436  Metric:1
          RX packets:9171 errors:0 dropped:0 overruns:0 frame:0
          TX packets:9171 errors:0 dropped:0 overruns:0 carrier:0
          collisions:0 txqueuelen:0
          RX bytes:1470192 (1.4 MB)  TX bytes:1470192 (1.4 MB)

pan1      Link encap:Ethernet  HWaddr fa:18:87:a0:16:64
          inet addr:10.10.10.2  Bcast:10.10.10.255  Mask:255.255.255.0
          inet6 addr: fe80::f818:87ff:fea0:1664/64 Scope:Link
          UP BROADCAST RUNNING MULTICAST  MTU:1500  Metric:1
          RX packets:0 errors:0 dropped:0 overruns:0 frame:0
          TX packets:114 errors:0 dropped:0 overruns:0 carrier:0
          collisions:0 txqueuelen:0
          RX bytes:0 (0.0 B)  TX bytes:18965 (18.9 KB)
```

Step 4: Next, execute command
sudo ifconfig eth0 192.168.1.2

This command is to assign the IP address selected in step2 to available Ethernet interface eth0

```
root@RDubuntu:/home/rdubuntu/Pictures# sudo ifconfig eth0 192.168.1.2
root@RDubuntu:/home/rdubuntu/Pictures# sudo ifconfig eth0
eth0      Link encap:Ethernet  HWaddr 00:16:36:42:d3:d0
          inet addr:192.168.1.2  Bcast:192.168.1.255  Mask:255.255.255.0
          inet6 addr: fe80::216:36ff:fe42:d3d0/64 Scope:Link
          UP BROADCAST RUNNING MULTICAST  MTU:1500  Metric:1
          RX packets:4776 errors:0 dropped:0 overruns:0 frame:0
          TX packets:5212 errors:0 dropped:0 overruns:0 carrier:0
          collisions:0 txqueuelen:1000
          RX bytes:972713 (972.7 KB)  TX bytes:3890982 (3.8 MB)
```

Step 5: Launch Firefox browser and enter 192.168.1.252. This will bring up the configuration utility. Click **"Site Survey"** to scan for your wireless network.

The screenshot shows a Mozilla Firefox browser window titled "WLAN AP Webserver - Mozilla Firefox". The address bar shows "192.168.1.252/home.asp". The page header is "IOGEAR Universal Wifi Adapter Utility". The main heading is "Wireless Site Survey" in blue. Below it, a paragraph states: "This page provides tool to scan the wireless network. If any Access Point or IBSS is found, you could choose to connect it manually when client mode is enabled." Below this is a section titled "List of APs" containing a table with columns: SSID, BSSID, Channel, Type, Encrypt, Signal, and Select. The first row has "None" in the SSID column. Below the table is a "Password:" label and an empty input field. At the bottom, there are six buttons: "Sitesurvey", "Connect", "Status", "Manual WLAN Setup", "LAN Setup", and "Firmware Upgrade".

WLAN AP Webserver - Mozilla Firefox

WLAN AP Webserver

192.168.1.252/home.asp

IOGEAR Universal Wifi Adapter Utility

Wireless Site Survey

This page provides tool to scan the wireless network. If any Access Point or IBSS is found, you could choose to connect it manually when client mode is enabled.

List of APs

SSID	BSSID	Channel	Type	Encrypt	Signal	Select
None						

Password:

Step 6: After finish setup, GWU627 will be connected to wireless router.

Execute command below to obtain the IP address from router and the installation is now completed.

sudo dhclient eth0

```
rdubuntu@RDubuntu:~$ dhc
dhclient          dhclient3          dhclient-script  dhcpd
rdubuntu@RDubuntu:~$ dhc
dhclient          dhclient3          dhclient-script  dhcpd
rdubuntu@RDubuntu:~$ dhclient eth0
RTNETLINK answers: Operation not permitted
rdubuntu@RDubuntu:~$ sudo dhclient eth0
Rather than invoking init scripts through /etc/init.d, use the service(8)
utility, e.g. service smbd reload

Since the script you are attempting to invoke has been converted to an
Upstart job, you may also use the reload(8) utility, e.g. reload smbd
rdubuntu@RDubuntu:~$ ifconfig eth0
eth0      Link encap:Ethernet  HWaddr 00:16:36:42:d3:d0
          inet addr:192.168.101.125  Bcast:192.168.101.255  Mask:255.255.255.0
          inet6 addr: fe80::216:36ff:fe42:d3d0/64 Scope:Link
          UP BROADCAST RUNNING MULTICAST  MTU:1500  Metric:1
          RX packets:1300 errors:0 dropped:0 overruns:0 frame:0
          TX packets:816 errors:0 dropped:0 overruns:0 carrier:0
          collisions:0 txqueuelen:1000
          RX bytes:270660 (270.6 KB)  TX bytes:167183 (167.1 KB)

rdubuntu@RDubuntu:~$ ping -c 2 www.google.com
PING www.google.com (108.177.97.147) 56(84) bytes of data:
64 bytes from tn-in-f147.1e100.net (108.177.97.147): icmp_req=1 ttl=43 time=13.3 ms
64 bytes from tn-in-f147.1e100.net (108.177.97.147): icmp_req=2 ttl=43 time=12.8 ms

--- www.google.com ping statistics ---
2 packets transmitted, 2 received, 0% packet loss, time 1001ms
rtt min/avg/max/ndev = 12.892/13.143/13.394/0.251 ms
rdubuntu@RDubuntu:~$
```

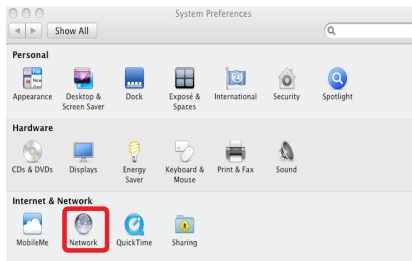
Installation without WPS - Mac

Step 1: Turn off your computer's wireless connection (if applicable) and disconnect the Ethernet cable currently connect to your computer (if applicable).

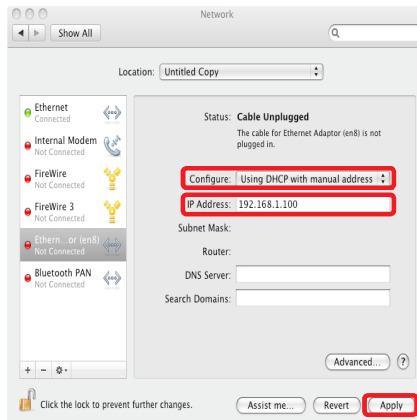
Step 2: Use both the included RJ-45 Ethernet cable and the USB cable to connect the WiFi adapter with your computer.

Step 3: Set your computer with a static IP address.

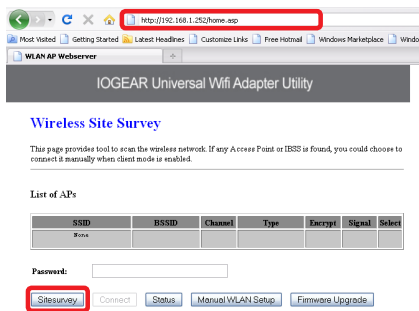
a. Open system preferences and select "Network".



- b. Select your Ethernet connection in the left pane. Next change configure to Manual and enter IP address 192.168.1.100 and Subnet Mask 255.255.255.0. Remove any entries in the Router and DNS boxes then click Apply.



Step 4: Open your web browser and enter **192.168.1.252**. This will bring up the configuration utility. Click **“Site Survey”** to scan for your wireless network.



Step 5: Select the AP you want to connect to and enter the password if the network is secured. Click the **“Connect”** button to establish the connection.


If your network security settings are set to not broadcast your SSID, then you will need to manually set up the SSID and the wireless security (WEP or WPA). (Please see Page. 37)

IOGEAR Universal Wifi Adapter Utility

Wireless Site Survey

This page provides tool to scan the wireless network. If any Access Point or IBSS is found, you could choose to connect it manually when client mode is enabled.

List of APs

SSID	BSSID	Channel	Type	Encrypt	Signal	Select
Office	00ff08:58:b49	9 (B)	AP	WEP	52	

Password:

Site survey

Connect

Status


Manual WLAN Setup

Firmware Upgrade

IOGEAR Universal Wifi Adapter Utility

Connection Successful!

OK



Step 6: Close your browser and change the network settings on your computer back to DHCP. Refer to steps 3a through 3b.

Step 7: Disconnect the Ethernet and USB cables from your computer.

Step 8: Use the included RJ-45 Ethernet cable to connect the WiFi adapter with your device such as a Blu-Ray player, HDTV, or game console.

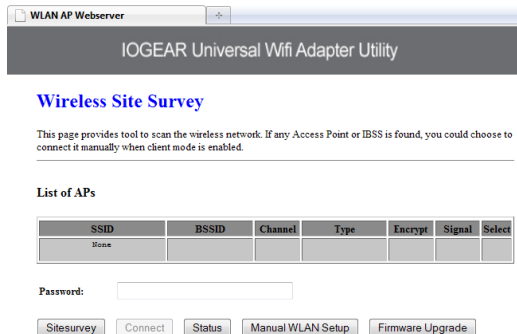
Step 9: Power on your adapter using the USB cable or AC adapter.

The installation is complete. Your device is now wireless. If the device asks for the type of internet connection, make sure “WIRED” is selected.

Manual Set Up

If your network security settings are set to not broadcast your SSID, then you will need to manually set up the SSID and the wireless security (WEP or WPA).

Step 1: Click “Manual WLAN Setup” to start the Setup Wizard



The screenshot shows a web browser window titled "WLAN AP Webserver". The main heading is "IOGEAR Universal Wifi Adapter Utility". Below this is a section titled "Wireless Site Survey" in blue text. A paragraph explains that the tool scans for wireless networks and allows manual connection if found. A table titled "List of APs" is shown with columns: SSID, BSSID, Channel, Type, Encrypt, Signal, and Select. The first row has "None" in the SSID column. Below the table is a "Password:" label and an empty text box. At the bottom are five buttons: "Sitesurvey", "Connect", "Status", "Manual WLAN Setup", and "Firmware Upgrade".

WLAN AP Webserver

IOGEAR Universal Wifi Adapter Utility

Wireless Site Survey

This page provides tool to scan the wireless network. If any Access Point or IBSS is found, you could choose to connect it manually when client mode is enabled.

List of APs

SSID	BSSID	Channel	Type	Encrypt	Signal	Select
None						

Password:

Step 2: Click “Next”

WLAN AP Webserver

IOGEAR Universal Wifi Adapter Utility

Setup Wizard

The setup wizard will guide you to configure access point for first time. Please follow the setup wizard step by step.

Welcome to Setup Wizard.

The Wizard will guide you the through following steps. Begin by clicking on Next.

1. Set Wireless Network Name
2. Select Wireless Security Mode

Next>>

Step 3: Enter your networks SSID and click “Next”

WLAN AP Webserver

IOGEAR Universal Wifi Adapter Utility

1. Set Wireless Network Name

You can enter the Wireless Network Name of AP.

Wireless Network Name(SSID):

Cancel <<Back Next>>

Step 4: Enter your encryption information and click “Finished”



2. Select Wireless Security Mode

This page allows you setup the wireless security. Turn on WEP or WPA by using Encryption Keys could prevent any unauthorized access to your wireless network.

Encryption: WPA2 ▼

Pre-Shared Key Format:

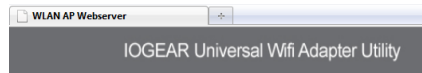
Passphrase ▼

Pre-Shared Key:

1234567890

Cancel <<Back Finished


Step 5: The Universal Wi-Fi Adapter will now reboot.



Settings Changed Successfully!

Do not turn off or reboot the Device during this time.

Please wait 13 seconds ...



Step 6: Close your browser and change the network settings on your computer back to DHCP (Obtain an IP address Automatically & Obtain DNS server address automatically). Also do not forget to enable your wireless connection if you disabled it.

Step 7: Disconnect the Ethernet and USB cables from your computer.

Step 8: Use the included RJ-45 Ethernet cable to connect the WiFi adapter with your device such as a Blu-Ray player, HDTV, or game console.

Step 9: Power on your adapter using the USB cable or AC adapter.

The installation is complete. Your device is now wireless. If the device asks for the type of internet connection, make sure “WIRED” is selected.

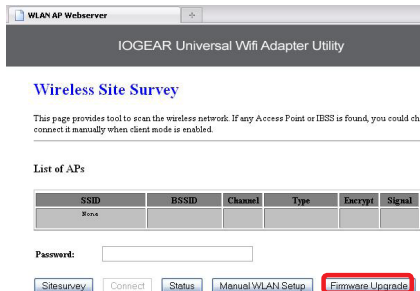
Firmware Upgrade

Step 1: Turn off your computer's wireless connection (if applicable) and disconnect the Ethernet cable currently connect to your computer (if applicable).

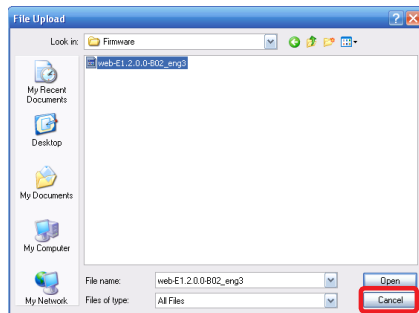
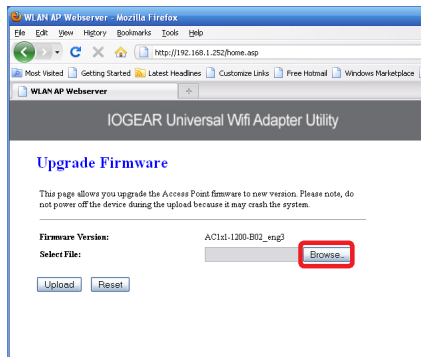
Step 2: Use both the included RJ-45 Ethernet cable and the USB cable to connect the WiFi adapter with your computer.

Step 3: Set your computer with a static IP address.

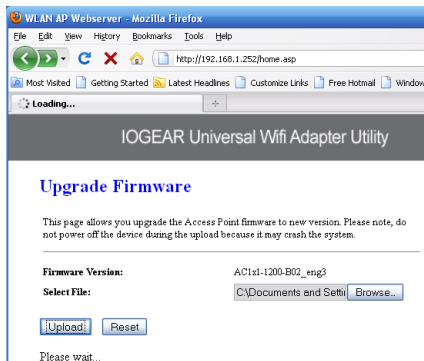
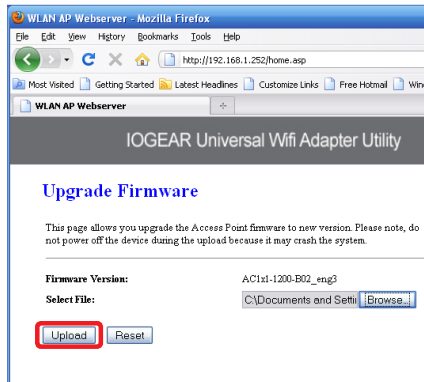
Step 4: Open your web browser and enter **192.168.1.252**. This will bring up the configuration utility. Click the **"Firmware Upgrade"** button.



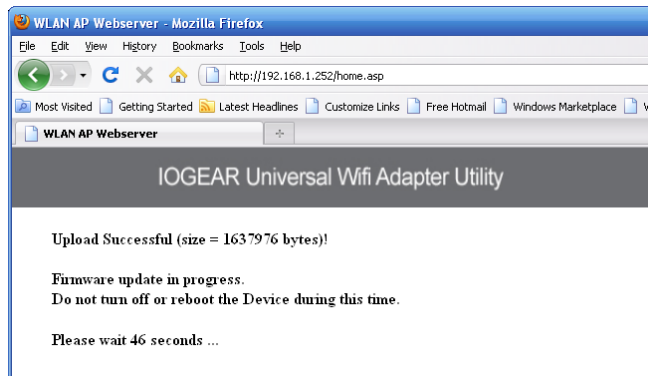
Step 5: Click **“Browse”** and located your firmware file, select it, and click **“Open”**.



Step 6: Click **“Upload”** to start the firmware upgrade process.



Firmware update complete. Wait for the device to reboot before disconnecting.



Once the device is finished rebooting, you will see a status screen. Check your settings. After a firmware upgrade, the Universal Wifi Adapter may reset back to factory settings and need to be set up for your network again.

Access Point Status

This page shows the current status and some basic settings of the device.

System	
Uptime	0day:0h:2m:46s
Firmware Version	AC1x1-1200-B02_eng1
Build Time	Fri Nov 19 15:48:58 CST 2010
Wireless Configuration	
Mode	Infrastructure Client
Band	2.4 GHz (B+G+N)
SSID	TV
Channel Number	6
Encryption	Disabled
BSSID	00:00:00:00:00:00
Status	Scanning
TCP/IP Configuration	
Attain IP Protocol	Fixed IP
IP Address	192.168.1.252
Subnet Mask	255.255.255.0
Default Gateway	0.0.0.0
DHCP Server	Disabled
MAC Address	00:02:72:97:89:7f

SiteSurvey

Compliance Information

FCC Statement

This equipment has been tested and found to comply with the limits for a Class B digital device, pursuant to Part 15 of the FCC Rules. These limits are designed to provide reasonable protection against harmful interference in a residential setting. This product generates, uses, and can radiate radio frequency energy and, if not installed and used as directed, it may cause harmful interference to radio communications. Although this product complies with the limits for a Class B digital device, there is no guarantee that interference will not occur in a particular installation.

CE Compliance

This device has been tested and found to comply with the following European Union directives: Electromagnetic Capability (89/336/EMC), Low Voltage (73/23/EEC) and R&TTED (1999/5/EC).



Industry Canada Statement

This device complies with Industry Canada licence-exempt RSS standard(s). Operation is subject to the following two conditions: (1) this device may not cause interference, and (2) this device must accept any interference, including interference that may cause undesired operation of the device.

SJ/T 11364-2006

The following contains information that relates to China.

部件名称	有毒有害物质或元素					
	铅 (Pb)	汞 (Hg)	镉 (Cd)	六价 (Cr(VI))	多溴联苯 (PBB)	多溴二苯醚 (PBDE)
电器部件	●	○	○	○	○	○
机构部件	○	○	○	○	○	○

○:表示该有毒有害物质在该部件所有均质材料中的含量均在SJ/T 11363-2006规定的限量要求之下。

●:表示符合欧盟的豁免条款，但该有毒有害物质至少在该部件的某一均质材料中的含量超出SJ/T 11363-2006的限量要求。

x:表示该有毒有害物质至少在该部件的某一均质材料中的含量超出SJ/T 11363-2006的限量要求。



Limited Warranty

This product carries a 3 Year Limited or Lifetime Warranty.
For the terms and conditions of this warranty, please go to
<http://www.iogear.com/support/warranty>

Register online at <http://www.iogear.com/register>

Important Product Information

Product Model: GWU627

Serial Number: _____

Contact

WE'RE HERE TO HELP YOU!
NEED ASSISTANCE SETTING UP THIS PRODUCT?

Make sure you:

1. Visit www.iogear.com for more product information
2. Visit www.iogear.com/support for live help and product support

IOGEAR

iogear.custhelp.com
support@iogear.com
www.iogear.com

