



## Quick Start Guide

Wireless RF2.4 Keyboard w/Trackball

---

**GKB635**

PART NO. Q1506

# Package Contents

1

- 1 x GKB635W Keyboard
- 1 x GKB635W USB RF Receiver
- 2 x AA Batteries
- 1 x Quick Start Guide
- 1 x Warranty Card

## System Requirements

### Hardware:

- Compatible device with USB Type-A Port

### Operating System

- Windows® 7, Windows® 8.1 and above
- Mac OS X 10.6 and above

## Overview

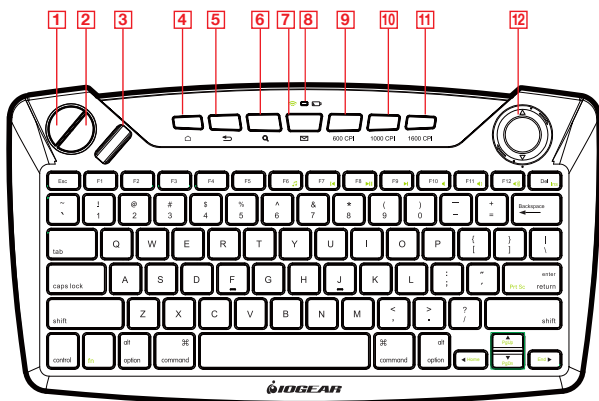
### Keyboard Front View

1. Mouse Left Click
2. Mouse Right Click
3. Scroll Wheel
4. Default Homepage (Internet Explorer)
5. Return to previous screen
6. Search
7. Email
8. Low Battery Indicator
9. 600CPI
10. 1000CPI
11. 1600CPI
12. Laser Trackball

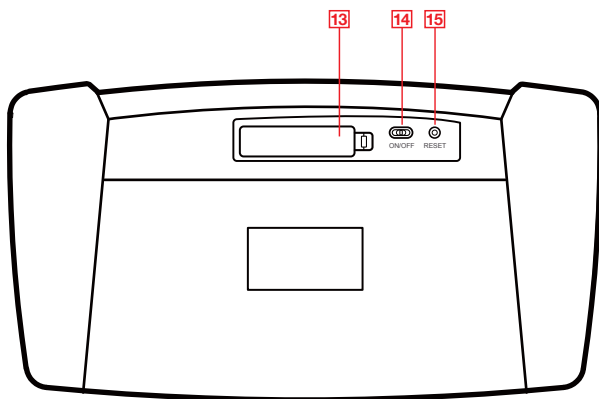
### Keyboard Back View

13. Battery Cover
14. ON/OFF Switch
15. RESET

## Keyboard Front View



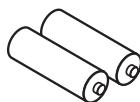
## Keyboard Back View



## USB RF Receiver



## AA Batteries



STEP 1 Remove battery cover on the underside of the keyboard.

STEP 2 Install the 2 AA batteries (included in the kit).

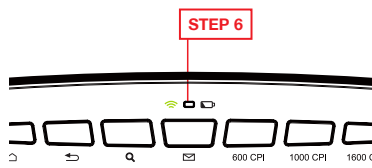
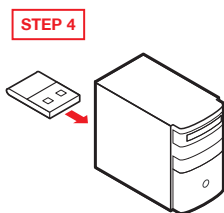
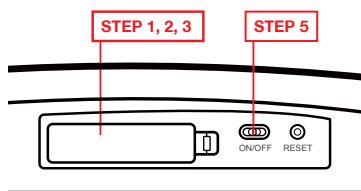
STEP 3 Close the battery cover.

STEP 4 Insert the receiver into a USB port of the computer.

STEP 5 Turn on the switch on the underside of the keyboard.

STEP 6 The LED at the top center of the keyboard will start to blink blue, when it is out the keyboard and the receiver are now paired and ready to use.

Note: If the LED is blinking red, this is an indication of a low battery condition.



## Pairing (Optional)

# 4

The keyboard and receiver have already been pre-paired at the factory. In case the 2 units are not paired, please follow the instructions below.

### STEP 1

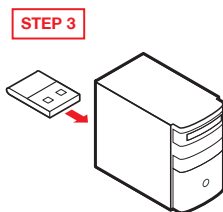
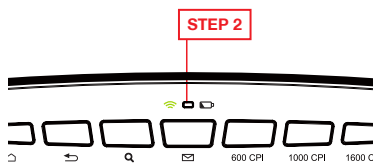
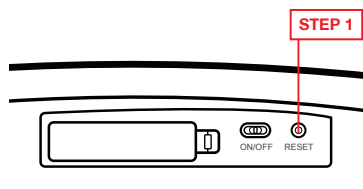
Press the pairing switch located underneath the keyboard.

### STEP 2

The LED will start blinking blue; at this point the transmitter is waiting for the connection to the receiver to establish.

### STEP 3

Plug in the receiver into your computer USB port, the LED will stop blinking and connection is now established.



Q Keyboard and receiver will not connect

- A
1. Make sure that the LED is not blinking red indicating low battery
  2. Please check if the wireless connection light is on and blinking
  3. Move closer and see if connection is now established

Q Keyboard not responding

- A The keyboard could be in sleep mode, click on the left mouse button to wake it up.  
Keyboard will automatically go into sleep mode after 6 minutes of no input.

Q My mouse pointer moves too slow

- A Change the cpi (clicks per inch) from 600 to 1000 or 1600cpi

## Operation

To make it more convenient there are some shortcut key combinations that can be used for certain keyboard functions. In order to control certain controls on your computer such as volume or DVD functions, a combination of key strokes are indicated below.

### Hot Key Functions

Hot Key	Description
Fn+F6	Previous Track
Fn+F7	Play/Pause
Fn+F8	Next Track
Fn+F9	Mute
Fn+F10	Volume Down
Fn+F11	Volume Up
Fn+F12	Print Screen
Fn+Delete	Insert
Fn+4+Arrow Keys	Home (Left arrow), End (Right arrow), PgUp (Up arrow), PgDn (Down arrow)

## Compliance Information

### FCC Statement

This equipment has been tested and found to comply with the limits for a Class B digital device, pursuant to Part 15 of the FCC Rules. These limits are designed to provide reasonable protection against harmful interference in a residential setting. This product generates, uses, and can radiate radio frequency energy and, if not installed and used as directed, it may cause harmful interference to radio communications. Although this product complies with the limits for a Class B digital device, there is no guarantee that interference will not occur in a particular installation.

### CE Statement

This device has been tested and found to comply with the following European Union directives: Electromagnetic Capability (2004/108/EC), Low Voltage (2006/95/EC).

## Limited Warranty

### Warranty Information

This product carries a 1 Year Limited or Lifetime Warranty. For the terms and conditions of this warranty, please go to <http://www.iogear.com/support/warranty>

Register online at <http://www.iogear.com/register>

Important Product Information

Product Model

Serial Number

## Contact

### WE'RE HERE TO HELP YOU! NEED ASSISTANCE SETTING UP THIS PRODUCT?

Make sure you:

1. Visit **[www.iogear.com](http://www.iogear.com)** for more product information
2. Visit **[www.iogear.com/support](http://www.iogear.com/support)** for live help and product support

#### **IOGEAR**

[iogear.custhelp.com](http://iogear.custhelp.com)

[support@iogear.com](mailto:support@iogear.com)

[www.iogear.com](http://www.iogear.com)