



Quick Start Guide

Ultra Long Range Wireless Video Transmitter

GWLRVGATX / GWL RHDTX / GWLRDVITX
PART NO. Q1486

Package Contents

1

- 1 x Ultra Long Range Wireless Transmitter
- 1 x IR In Cable
- 1 x IR Out Cable
- 1 x Video Cable
- 1 x Audio Cable (Included for GWLRVGATX only)
- 1 x Power Adapter
- 1 x Quick Start Guide

System Requirements

2

Display:

- HDTV, HD Display or HD Projector with:
- VGA (GWLRVGARX) input
- HDMI (GWL RHDRX) input
- DVI (GWLRDVIRX) input

Media Source:

- VGA (GWLRVGATX) output
- HDMI (GWL RHDTX) output
- DVI (GWLRDVITX) output

Cables:

- VGA cable (GWLRVGATX)
- HDMI cable (GWL RHDTX)
- DVI cable (GWLRDVITX)

Receiver compatibility table:

GWLRHDRX	GWL RHDTX, GWLRDVITX
GWLRDVIRX	GWL RHDTX, GWLRDVITX
GWLRVGARX	GWLRVGATX

Transmitter compatibility table:

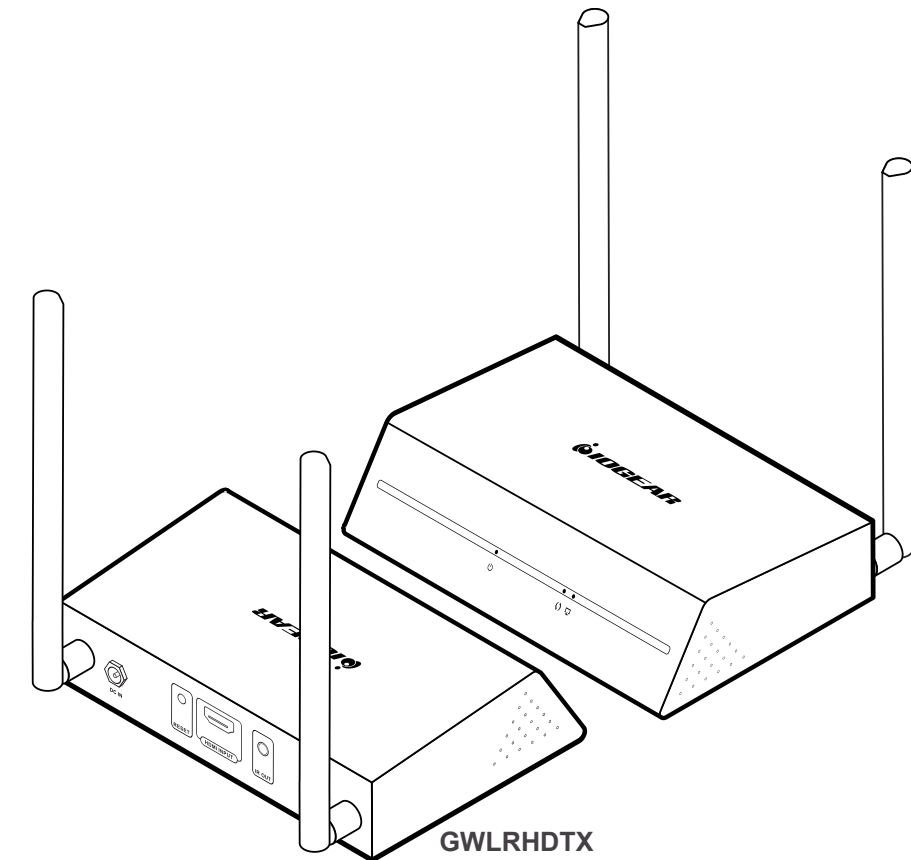
GWL RHDTX	GWLRHDRX, GWLRDVIRX
GWLRDVITX	GWLRHDRX, GWLRDVIRX
GWLRVGATX	GWLRVGARX, GWLRHDRX, GWLRDVIRX

Overview

3

Note that you will need a separate audio transmission when using DVI transmitter and/or receiver. If you use a GWLRVGATX, you can connect the audio cable (provided).

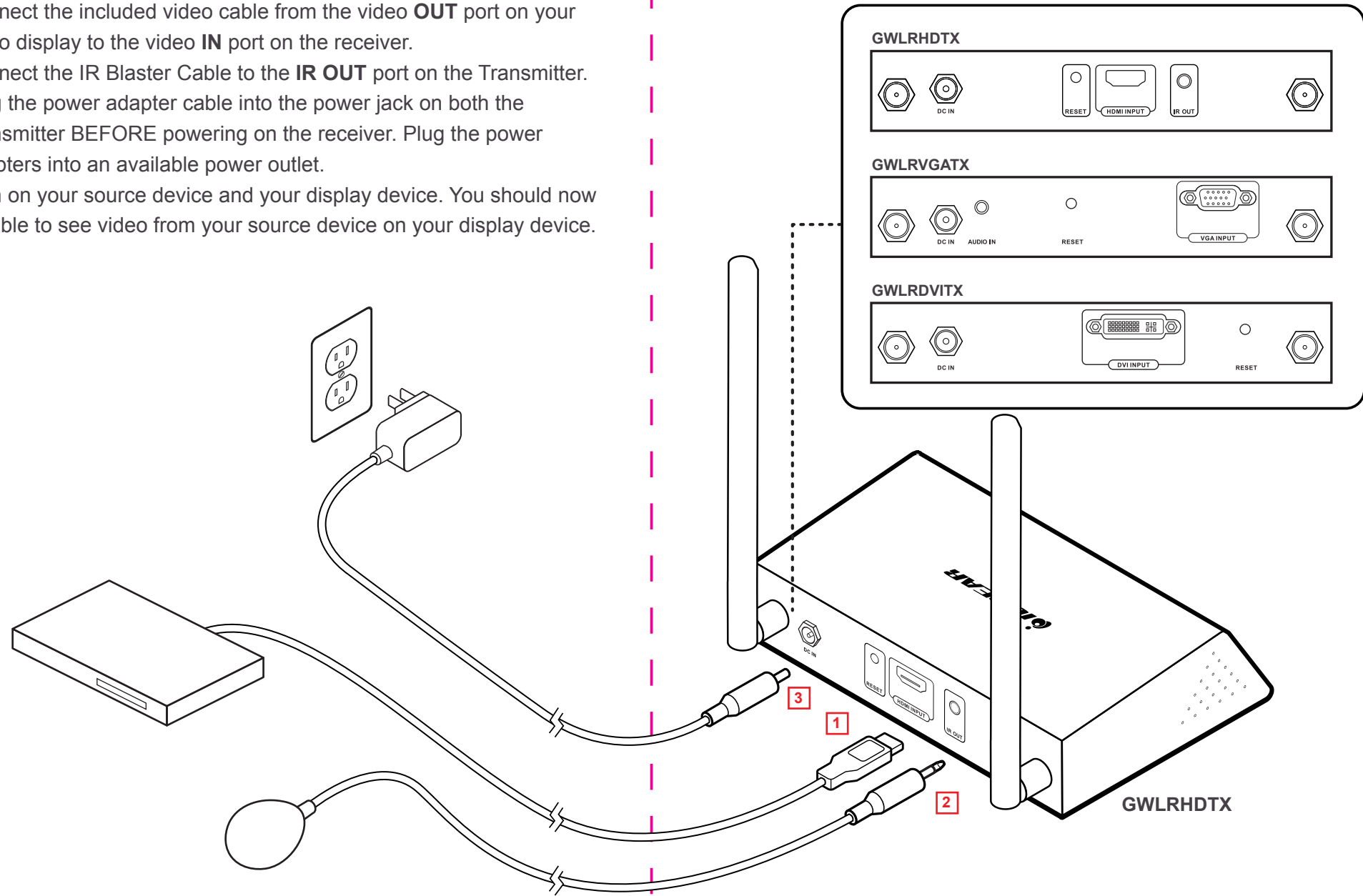
Please note that this Quick Start Guide covers multiple models, please refer to your model numbers for your specific video connection. GWL RHDTX/RX for HDMI video connection, GWLRDVITX/RX for DVI video connection and GWLRVGATX/RX for VGA video connection.



Hardware Installation

4

1. Connect the included video cable from the video **OUT** port on your video display to the video **IN** port on the receiver.
2. Connect the IR Blaster Cable to the **IR OUT** port on the Transmitter.
3. Plug the power adapter cable into the power jack on both the Transmitter BEFORE powering on the receiver. Plug the power adapters into an available power outlet.
4. Turn on your source device and your display device. You should now be able to see video from your source device on your display device.



Compliance Information

FCC Statement
This equipment has been tested and found to comply with the limits for a Class B digital device, pursuant to Part 15 of the FCC Rules. These limits are designed to provide reasonable protection against harmful interference in a residential setting. This product generates, uses, and can radiate radio frequency energy and, if not installed and used as directed, it may cause harmful interference to radio communications. Although this product complies with the limits for a Class B digital device, there is no guarantee that interference will not occur in a particular installation.

CE Statement
This device has been tested and found to comply with the following European Union directives: Electromagnetic Capability (2004/108/EC), Low Voltage (2006/95/EC) and R&TTED (1999/5/EC).

Limited Warranty

This product carries a 1 Year Limited or Lifetime Warranty. For the terms and conditions of this warranty, please go to <http://www.iogear.com/support/warranty>

Register online at <http://www.iogear.com/register>

Important Product Information

Product Model _____

Serial Number _____

Contact

WE'RE HERE TO HELP YOU!
NEED ASSISTANCE SETTING UP THIS PRODUCT?

- Make sure you:
1. Visit www.iogear.com for more product information
 2. Visit www.iogear.com/support for live help and product support

IOGEAR
iogear.custhelp.com
support@iogear.com
www.iogear.com