



Quick Start Guide

Portable Laptop Console Crash Cart Adapter

GUC211V

PART NO. Q1458

Package Contents

1

- 1 x GUC211V Portable Laptop Console Crash Cart Adapter
- 1 x USB Type A to USB Mini B Cable
- 1 x QSG

System Requirements

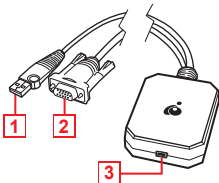
- A laptop with a USB Type A Port
- A computer with a VGA and USB Type A Port

Note:

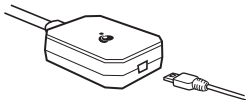
1. IOGEAR's GUC211V only controls the target computer through a direct cable connection. The crash cart adapter cannot be used to control two standalone PCs, as it provides a one-to-one direct KVM console access.
2. User must know the login credentials of the target computer if it is part of that computer's system requirement

Overview

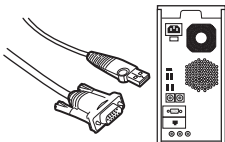
1. USB Type A Connector
2. VGA Connector
3. USB Mini B Port



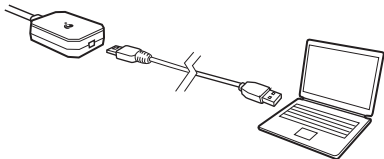
STEP 1. Connect the included USB Mini-B cable to the GUC211V.



STEP 2. Connect the bonded VGA and USB connector from the GUC211V to the target computer/server/kiosk.

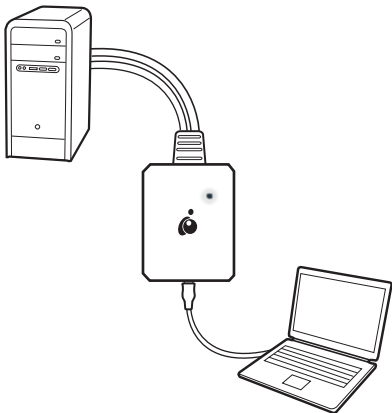


STEP 3. Connect the USB Type-A cable to your laptop.



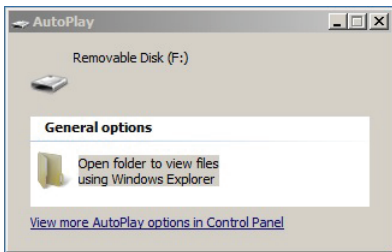
STEP 4. Make sure both the laptop computer and the target computer/server/kiosk are powered on.

STEP 5. When the target computer/server/kiosk/ and laptop are connected, the blue LED light on the unit lights up. At this point, a removable disk drive will be mounted onto your laptop with an executable file.



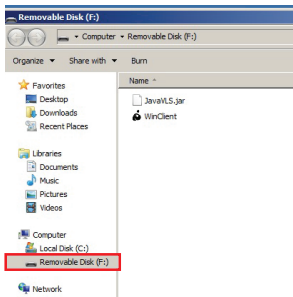
Connecting to Target Computer/Server/Kiosk

1. After the GUC211V is connected to the target computer and the laptop, a new Removable Disk drive will appear on the laptop.

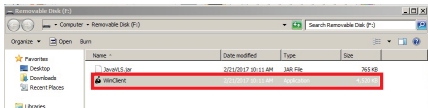


Note: If the Removable Disk does not appear, please check the cable connection between the GUC211V, connected laptop, and target computer.

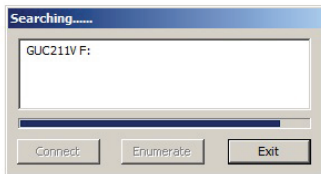
2. Open File Explorer window and click on the Removable Disk



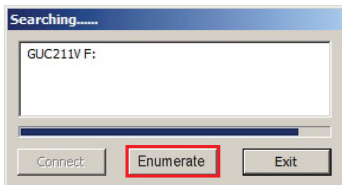
3. Double click WinClient.exe to open the executable file.



4. When WinClient opens, it will search for the target computer and will open a remote desktop window once connection is established.



5. Note: If the computer cannot be found, check the cable connections and click **Enumerate**



Remote Desktop Toolbar

WinClient interface provides a convenient remote desktop toolbar which is hidden at top center of the remote desktop window. Drag mouse over the top center to open the toolbar.

- | | |
|-----------------------|-------------------|
| 1. Screen Capture | 5. Mouse Pointer* |
| 2. Video Capture | 6. Zoom |
| 3. Video Sync | 7. Settings |
| 4. On-Screen Keyboard | |



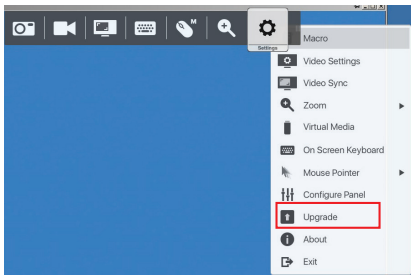
*Note: If mouse pointer appear to be stuck in the remote desktop window, press **[F4][F5]** from the laptop keyboard to show local cursor

Firmware Upgrade

1. Download the latest GUC211V firmware upgrade package from www.iogear.com/product/GUC211V/ to the laptop.
2. From the remote desktop toolbar, select **Settings**.



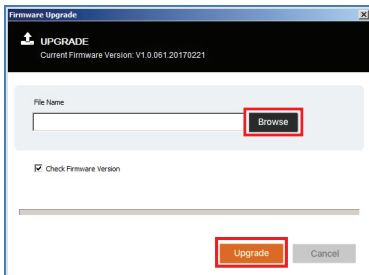
3. On Settings, select Upgrade



4. When Check Firmware Version is enabled, the current firmware level will be compared with that of the updated firmware upgrade.

Note: If the current firmware version is equal to or higher than the upgrade version, a message will appear to inform of the situation and stops the upgrade procedure. If Check Firmware Version is not enabled, the firmware upgrade file will be installed without checking its version compared to the current firmware file

5. Browse and select Firmware Upgrade package and Click Upgrade



6. Remote desktop window will close once upgrade is complete.

Compliance Information

CE Compliance

This device has been tested and found to comply with the following European Union directives: Electromagnetic Capability (2004/108/EC), Low Voltage (2006/95/EC) and R&TTED (1999/5/EC).

Limited Warranty

Warranty Information

This product carries a 1 Year Limited Warranty. For the terms and conditions of this warranty, please go to <http://www.iogear.com/support/warranty>

Register online at <http://www.iogear.com/register>

Important Product Information

Product Model _____

Serial Number _____

Contact

WE'RE HERE TO HELP YOU! NEED ASSISTANCE SETTING UP THIS PRODUCT?

Make sure you:

1. Visit **www.iogear.com** for more product information
2. Visit **www.iogear.com/support** for live help and product support

IOGEAR

iogear.custhelp.com

support@iogear.com

www.iogear.com