



# Quick Start Guide

## Bluetooth Serial Adapter

---

**GBC232A**

PART NO. Q1375

## Package Contents

- 1 x GBC232A Bluetooth Serial Adapter
- 1 x RS232 Extension Cable
- 1 x Null Modem Adapter (Female)
- 1 x Power Adapter
- 1 x Installation CD
- 1 x Quick Start Guide
- 1 x Warranty Card

## System Requirements

### PC Requirements

- Built-in Bluetooth, Bluetooth USB Adapter or additional IOGEAR Bluetooth Serial Adapter

### Operating System

- For PC: Windows Vista®, Windows® 7, Windows® 8.1, Windows® 10

## Overview

Right View:

1. Power Slide Switch
2. Bluetooth LED
3. Mode LED
4. Power LED



Left View:


- 5. Mode Button
- 6. DC Power Jack






## Setting Up Your Bluetooth Serial Adapter

The Bluetooth Serial Adapter is compatible with DTE – Data Terminal Equipment (i.e. PC) RS-232 devices. Use the provided Null Modem Adapter to connect to DCE – Data Communications Equipment serial devices (i.e. modem). Follow the steps below to configure the adapter for initial use.

### Configuring the Bluetooth Serial Adapter on Your PC

1. Windows® Vista: Press the  button on the desktop taskbar, go to **Settings** and select **Control Panel**.

Windows® 7: Press the  button on the desktop taskbar and select **Control Panel**.

Windows® 8.1 / Windows® 10: Press the  +  keys and select **Control Panel**.

## 2. Windows Vista: Select **Hardware and Sound**



### System and Maintenance

Get started with Windows  
Back up your computer



### Security

Check for updates  
Check this computer's security status  
Allow a program through Windows Firewall



### Network and Internet

View network status and tasks  
Set up file sharing



### Hardware and Sound

Play CDs or other media automatically  
Printer  
Mouse



### Programs

Uninstall a program  
Change startup programs



### User Accounts and Family Safety

Set up parental controls for any user  
Add or remove user accounts



### Appearance and Personalization

Change desktop background  
Customize colors  
Adjust screen resolution



### Clock, Language, and Region

Change keyboards or other input methods  
Change display language



### Ease of Access

Let Windows suggest settings  
Optimize visual display



### Additional Options

Windows 7 / Windows 8.1 / Windows 10: Change view to **Category**.  
Select **View devices and printers** under Hardware and Sound.

Adjust your computer's settings

View by: **Category**



### System and Security

Review your computer's status  
Save backup copies of your files with File History  
Find and fix problems



### Network and Internet

View network status and tasks  
Choose homegroup and sharing options



### Hardware and Sound

View devices and printers  
Add a device  
Adjust commonly used mobility settings



### Programs

Uninstall a program



### User Accounts and Family Safety

Change account type  
Set up Family Safety for any user



### Appearance and Personalization

Change the theme  
Change desktop background  
Adjust screen resolution



### Clock, Language, and Region

Add a language  
Change input methods  
Change date, time, or number formats



### Ease of Access

Let Windows suggest settings  
Optimize visual display

3. Windows Vista: Scroll down to “Bluetooth Devices” and click on **Set up a Bluetooth enabled device**.



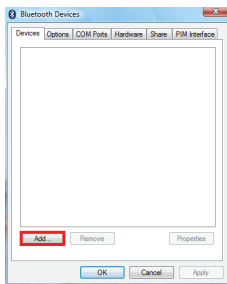
### Bluetooth Devices

Set up a Bluetooth enabled device

Change settings for a Bluetooth enabled device

Windows 7 / Windows 8.1 / Windows 10: Skip to step 5.

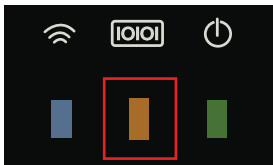
4. Windows Vista: Click the **Add** button.



5. Connect the included power adapter to the DC Power Jack on the Bluetooth Serial Adapter. Push and hold the CFG / RST button for one second.



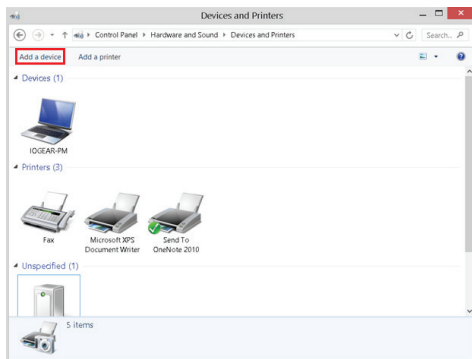
6. The device will enter Configuration mode when the Mode LED lights solid orange.



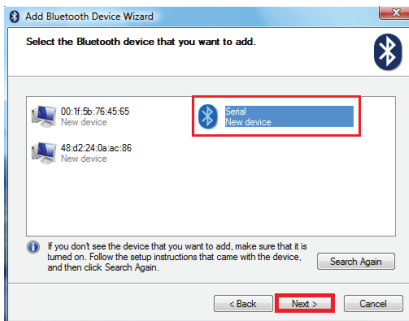
7. Windows Vista: Check the box next to “My device is set up and ready to be found” and click **Next**.



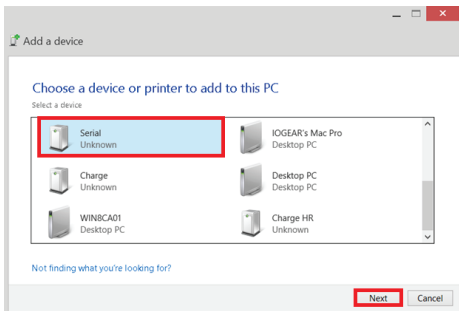
Windows 7 / Windows 8.1 / Windows 10: Click on **Add a device**.



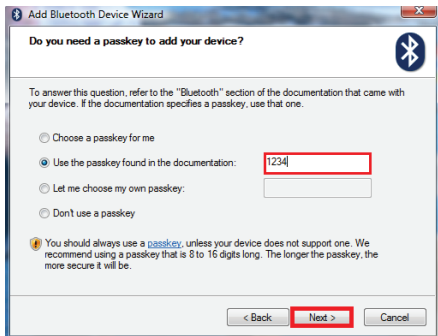
8. Windows Vista: Select **Serial** when it appears and click **Next**.



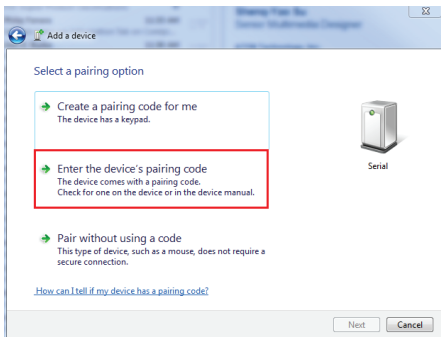
Windows 7 / Windows 8.1 / Windows 10: Select **Serial** when it appears and click **Next**.



9. Windows Vista: Click on **Use the passkey found in the documentation** and enter **1234**. Press the **Next** button.



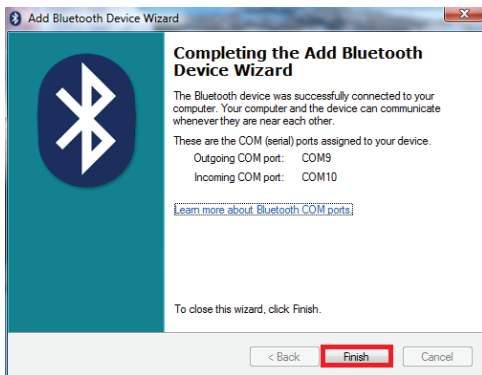
- Windows 7: Click on **Enter the device's pairing code**.



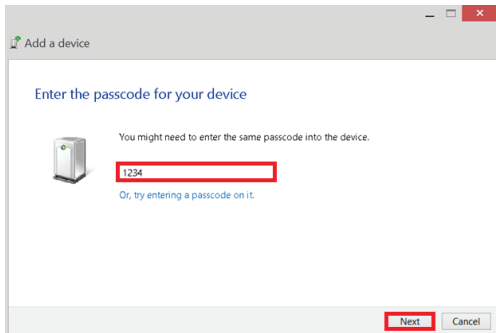
- Windows 8.1 / Windows 10: Skip to Step 10.



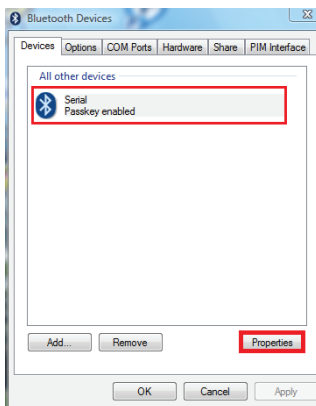
10. Windows Vista: Click the **Finish** button.



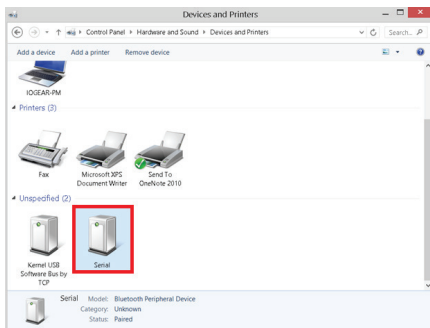
Windows 7 / Windows 8.1 / Windows 10: Enter passcode **1234** and click **Next** to complete pairing.



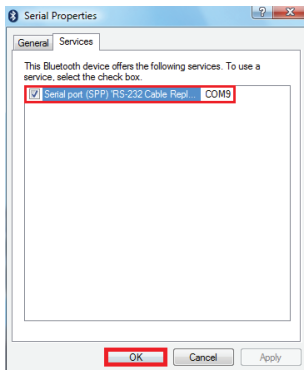
11. Windows Vista: From the **Bluetooth Devices** window in the desktop background, select **Serial** and click on the **Properties** button.



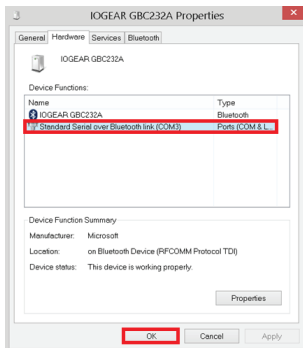
- Windows 7 / Windows 8.1 / Windows 10: Right click on **Serial** icon and select **Properties**.



12. Windows Vista: Select the **Services** tab to identify which COM port is being used. Press the **OK** button.

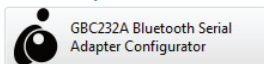


- Windows 7 / Windows 8.1 / Windows 10: Select the **Hardware** tab to identify which COM port is being used. Press the **OK** button.

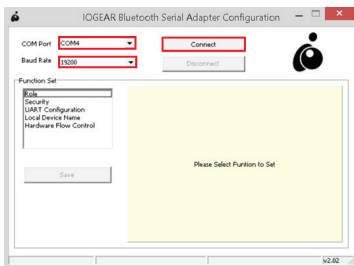


13. Insert Installation CD. When an explorer window pops up, right click on the **GBC232A Bluetooth Serial Adapter Configurator** file and select **"Run as administrator"**.

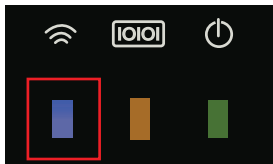
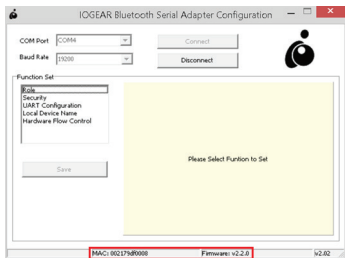
Files Currently on the Disc (1)



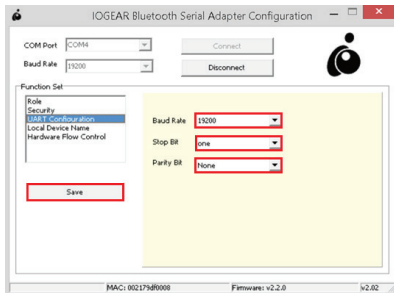
14. Select the COM Port identified in Step 12 from the COM Port dropdown menu and **19200** from the Baud Rate menu. Next, click on the **Connect** button.



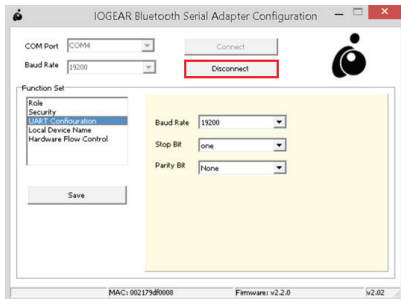
15. The connection is successful when the MAC address and Firmware version appear at the bottom of the configuration window and the Bluetooth LED lights solid blue.



16. Select “UART Configuration” and confirm that Baud Rate is set to **19200**, Stop Bit is set to **one**, and Parity Bit is set to **None**. Click the **Save** button to save your settings.



17. Click on the **Disconnect** button and close the IOGEAR Bluetooth Serial Adapter Configuration tool.



18. Push the CFG / RST button for one second and release. The orange Mode LED light will turn off. You have successfully completed configuration of the Bluetooth Serial Adapter.
19. Open your preferred terminal program and configure the settings to match your serial device.

## Compliance Statement

### **FCC Statement**

This equipment has been tested and found to comply with the limits for a Class B digital device, pursuant to Part 15 of the FCC Rules. These limits are designed to provide reasonable protection against harmful interference in a residential setting. This product generates, uses, and can radiate radio frequency energy and, if not installed and used as directed, it may cause harmful interference to radio communications. Although this product complies with the limits for a Class B digital device, there is no guarantee that interference will not occur in a particular installation.

## Limited Warranty

### Warranty Information

This product carries a 1 Year Limited Warranty. For the terms and conditions of this warranty, please go to <http://www.iogear.com/support/warranty>

Register online at <http://www.iogear.com/register>

### Important Product Information

Product Model \_\_\_\_\_

Serial Number \_\_\_\_\_

## Contact

### **WE'RE HERE TO HELP YOU! NEED ASSISTANCE SETTING UP THIS PRODUCT?**

Make sure you:

1. Visit [www.iogear.com](http://www.iogear.com) for more product information
2. Visit [www.iogear.com/support](http://www.iogear.com/support) for live help and product support

IOGEAR

[iogear.custhelp.com](http://iogear.custhelp.com)

[support@iogear.com](mailto:support@iogear.com)

[www.iogear.com](http://www.iogear.com)

19641 Da Vinci, Foothill Ranch, CA 92610