

## Warranty

### WE'RE HERE TO HELP YOU! NEED ASSISTANCE SETTING UP THIS PRODUCT?

Make sure you:

1. Use the live chat at [www.iogear.com](http://www.iogear.com) to try and solve any issues you may be having with the product.
2. Visit the Tech Info Library/FAQ on [www.iogear.com](http://www.iogear.com) (under the Support tab).
3. Call the 24/7 tech support line at 1-866-946-4327 (U.S. only) or 1-949-453-8782.

#### Warranty Information

This product carries a 1 Year Limited Warranty. For the terms and conditions of this warranty, please go to <http://www.iogear.com/support/warranty> or call 1-866-946-4327.

Register online at <http://www.iogear.com/register>

#### Important Product Information

Product Model \_\_\_\_\_  
Serial Number \_\_\_\_\_

#### About Us

• **FUN**  
IOGEAR offers connectivity solutions that are innovative, fun, and stylish, helping people enjoy daily life using our high technology products.

• **GREEN**  
IOGEAR is an environmentally conscious company that emphasizes the importance of conserving natural resources. The use of our technology solutions helps reduce electronic waste.

• **HEALTH**  
IOGEAR supports healthy and fit lifestyles. By integrating products with the latest scientific developments, IOGEAR's solutions enhance the life of end-users.



## QuickStart Guide

### 3 Port USB Hub and Card Reader Combo

GL4C87

PART NO. Q1541

## Requirements

PC or Mac with two available USB ports

## Flash Card Compatibility List

**MS:** MS / MS Pro / MS Duo / MS Pro Duo / MS MQ / MS MG Pro / Extreme III MS Pro / Ultra II MS Pro / HS MS Pro / HS MS Pro Duo / MS Rom / MS Select / MS PRO Duo MARK / M2 / MS Pro HG Duo

**MMC:** MMC / RS MMC / MMC Mobile / MMC 4.0 / RS MMC 4.0 / MMC Plus / MMC Micro

**T-Flash:** Micro SD / microSDHC Class2 / microSDHC Class4 / microSDHC Class6 / T-Flash

**SD:** SD / SD Class2 / SD Class4 / SD Class6 / SD Class10 / Mini SD / miniSDHC Class2 / miniSDHC Class4 / miniSDHC Class6 / SDHC Class2 / SDHC Class4 / SDHC Class6 / SDHC Class10 / Extreme SD / Extreme III SD / Ultra II SD / Ultra speed SD / SD HS / SD Pro HS / SD Ultra

**CF:** CF / CF Type I / CF Type II / Microdrive / CF Ultra / CF Ultra II / CF Extreme / CF Extreme II / CF Extreme III / CF Extreme IV

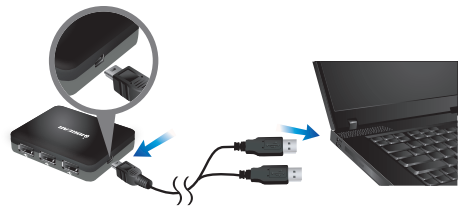
## Device Overview

1. Mini-B USB port
2. Slot for SD/MMC
3. Slot for CF
4. Slot for microSD/M2
5. Slot for MS
6. USB 2.0 ports



## Hardware Installation

1. Plug in the mini-B USB connector end of the included USB Y-Cable into the mini-B port of the Hub and Card Reader combo. And plug the two USB Type A connectors of the included USB Y-Cable to any two available USB ports of your computer.



Note: Please make sure to plug in both USB Type A connectors into your computer to ensure optimal performance. Having only single USB Type A connector plugged into your computer might cause the product not to function correctly.

2. Plug the USB Type A connector of any of your USB device to one of the three USB ports of the Hub and Card Reader Combo.



3. Insert compatible flash media cards to one of the four card slots on the Hub and Card Reader Combo. Please refer to the compatibility list to find out if you have the compatible flash card.



## Federal Communications Commission (FCC) Statement

15.21

You are cautioned that changes or modifications not expressly approved by the part responsible for compliance could void the user's authority to operate the equipment.

15.105(b)

This equipment has been tested and found to comply with the limits for a Class B digital device, pursuant to part 15 of the FCC rules. These limits are designed to provide reasonable protection against harmful interference in a residential installation. This equipment generates, uses and can radiate radio frequency energy and, if not installed and used in accordance with the instructions, may cause harmful interference to radio communications. However, there is no guarantee that interference will not occur in a particular installation. If this equipment does cause harmful interference to radio or television reception, which can be determined by turning the equipment off and on, the user is encouraged to try to correct the interference by one or more of the following measures:

Reorient or relocate the receiving antenna.  
Increase the separation between the equipment and receiver.  
Connect the equipment into an outlet on a circuit different from that to which the receiver is connected.  
Consult the dealer or an experienced radio/TV technician for help.

Operation is subject to the following two conditions:  
this device may not cause interference and  
this device must accept any interference, including interference that may cause undesired operation of the device.  
FCC RF Radiation Exposure Statement:  
This equipment complies with FCC radiation exposure limits set forth for an uncontrolled environment. End users must follow the specific operating instructions for satisfying RF exposure compliance. This transmitter must not be co-located or operating

in conjunction with any other antenna or transmitter.  
This device has been tested and found to comply with the requirements set up in the council directive on the approximation of the law of member states relating to EMC Directive 89/336/EEC, Low Voltage Directive 73/23/EEC and R&TTE Directive 99/5/EC.

## CE Statement

This device has been tested and found to comply with the requirements set up in the council directive on the approximation of the law of member states relating to EMC Directive 89/336/EEC, Low Voltage Directive 73/23/EEC and R&TTE Directive 99/5/EC.