



# Quick Start Guide

Gear Power 7000mAh Mobile Power Station

---

**GMP7K**

PART NO. Q31073-b

# Package Contents

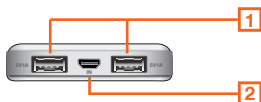
# 1

1 x Mobile Power Station  
1 x 3' USB Charging Cable  
1 x 5V 1A Power Adapter

1 x Carrying Pouch  
1 x Quick Start Guide  
1 x Warranty / Registration Card

## Overview

1. USB Type A Female Port (Output: 1A with each port charging, or 2.1A with only 1 device charging)
2. Micro-USB Female Port (Input)
3. LED Charging/Capacity Indicator
4. Battery Capacity Button

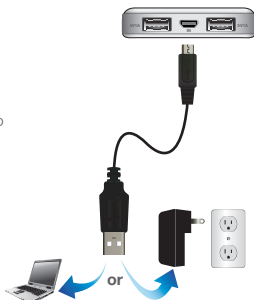


## Charging GearPower

Connect the GearPower Mobile Power Station to a power source using the included Micro USB cable and power adapter.

1. Plug the USB type A connector into the USB port of the 5V 1A power adapter. Plug power adapter into power outlet
2. Insert the Micro USB connector into the Micro USB port of the Mobile Power Station.
3. The LED charging indicator will light up "Green" and blink. Once the Mobile Power Station is fully charged, all four LED charging indicators will light up solid "Green".

The USB charging cable can be plugged in to your computer's available USB port, however it will charge at a slower rate than when plugged into the included 5V 1A power adapter.



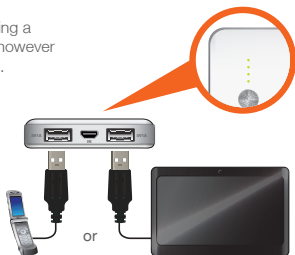
# Charging Mobile Devices

2

Connect mp3 players, cameras, smartphones and tablets to either USB port. The GMP7K can fast-charge two standard USB devices such as iPhone® and other smartphones (up to 1A per device) simultaneously, or fast-charge a single high current (2.1A) USB device such as an iPad® or tablet.

NOTE: The GMP7K is capable of charging a smartphone and tablet simultaneously, however the maximum output will be 1A per port.

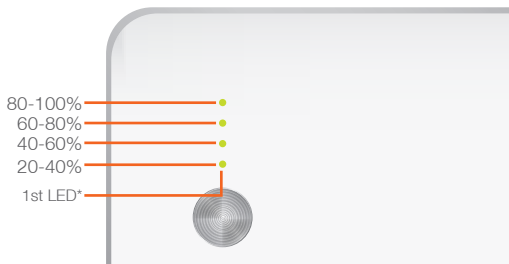
1. Connect the USB Type A connection end of the charging cable to either output port
2. Connect the other end to your mobile device
3. Press the battery capacity button to begin charging



## LED Battery Indicator

This chart shows the various stages of power availability and consumption on Mobile Power Station's LED battery indicator.

\*When 1st LED flashes, there is < 20% power.



**Do not damage the rechargeable battery. A damaged battery can cause an explosion or fire, and can result in personal injury and/or property damage. To prevent injury or damage:**

- Do not use or charge the battery if it appears to be damaged. Signs of damage include, but are not limited to, discoloration, warping, and leaking battery fluid.
- Do not expose the battery to fire, high temperature, or direct sunlight.
- Do not immerse the battery in water.
- Do not use or store the battery inside a vehicle during hot weather.
- Do not drop or puncture the battery.
- Do not open the battery or short-circuit its contacts.
- Keep Mobile Power Station dry and away from moisture and corrosive materials.
- Do not wash Mobile Power Station

**Use the battery only for its intended use and according to the instructions in the product documentation.**

**Avoid contact with the rechargeable battery if it appears to be leaking. Battery fluid is corrosive, and contact with it can result in personal injury and/or property damage. To prevent injury or damage:**

- If the battery leaks, avoid contact with the battery fluid.
- If battery fluid gets into your eyes, immediately rinse your eyes with clean water and seek medical attention. Do not rub your eyes!
- If battery fluid gets onto your skin or clothing, immediately use clean water to wash off the battery fluid.

**Charge and use the rechargeable battery only in strict accordance with the instructions.**

- Charging or using the battery in unauthorized equipment can cause an explosion or fire, and can result in personal injury and/or equipment damage. To prevent injury or damage:
- Do not charge or use the battery if it appears to be damaged or leaking.
- Discontinue charging a battery that gives off extreme heat or a burning odor.
- Use the battery only in the equipment that is specified to use it.
- Re-charge Mobile Power Station once every three months when not in use.

**Never dispose of batteries in the garbage. Disposal of batteries in the garbage is unlawful under state and federal environmental laws and regulations. Always take used batteries to your local battery-recycling center.**

## FCC Statement

This equipment has been tested and found to comply with the limits for a Class B digital device, pursuant to Part 15 of the FCC Rules. These limits are designed to provide reasonable protection against harmful interference in a residential setting. This product generates, uses, and can radiate radio frequency energy and, if not installed and used as directed, it may cause harmful interference to radio communications. Although this product complies with the limits for a Class B digital device, there is no guarantee that interference will not occur in a particular installation.

## CE Compliance

This device has been tested and found to comply with the following European Union directives: Electromagnetic Capability (2004/108/EC), Low Voltage (2006/95/EC) and R&TTE (1999/5/EC).

# Limited Warranty

## **WE'RE HERE TO HELP YOU! NEED ASSISTANCE SETTING UP THIS PRODUCT?**

Make sure you:

1. Visit [www.iogear.com](http://www.iogear.com) for more product information
2. Visit [www.iogear.com/support](http://www.iogear.com/support) for live help and product support

### **Warranty Information**

This product carries a 1 Year Limited Warranty. For the terms and conditions of this warranty, please go to <http://www.iogear.com/support/warranty>  
Register online at <http://www.iogear.com/register>

### **Important Product Information**

Product Model \_\_\_\_\_

Serial Number \_\_\_\_\_

# Contact

Toll Free: 866-946-4327 (USA)

Phone: 949-453-8782

Address: 19641 Da Vinci, Foothill Ranch, CA 92610, USA

Web Site: [www.iogear.com](http://www.iogear.com)

E-mail: [support@iogear.com](mailto:support@iogear.com)