



Quick Start Guide

Wireless AC1200 Dual-Band USB Adapter

GWU735

PART NO. Q1262

© 2014 IOGEAR® Part No. Q1262

IOGEAR, the IOGEAR logo, are trademarks or registered trademarks of IOGEAR. Microsoft and Windows are registered trademarks of Microsoft Corporation. All other brand and product names are trademarks or registered trademarks of their respective holders. IOGEAR makes no warranty of any kind with regards to the information presented in this document. All information furnished here is for informational purposes only and is subject to change without notice. IOGEAR assumes no responsibility for any inaccuracies or errors that may appear in this document.

Table of Content

Package Contents	4
System Requirements	4
Overview	5
Software Installation – PC	6
Wireless Network Configuration – PC	7
Software Installation – MAC	16
Wireless Network Configuration – MAC	20
FCC Statement	27
CE Statement	27
Limited Warranty	28
CE Statement	28

Package Contents

- 1 x Wireless AC1200 Dual-Band USB Adapter
- 1 x Quick Start Guide
- 1 x Driver Installation CD
- 1 x Warranty Card

System Requirements

Operating System

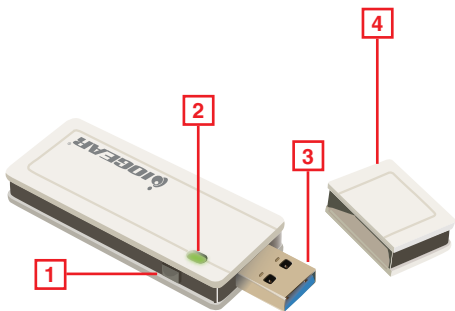
- Windows Vista®, Windows® 7, Windows® 8, Windows® 8.1
- Mac OS X 10.4 or above

Available USB 1.1, USB 2.0, or USB 3.0 port*

***Note:** For best results, connect the wireless AC1200 Dual-Band USB adapter to a USB 3.0 port.

Overview

1. WPS Button
2. LED Status Indicator
 - a. 1 flash/sec. – Wireless LAN Adapter is active
 - b. 3 flashes/sec. – Adapter is connecting to an Access Point
 - c. Off – Wireless LAN adapter is disabled
3. USB Connector
4. Cap



Software Installation – PC

1. Insert the driver installation CD into your CD-ROM Drive. Double-click on **Setup.exe** to start the installation.



2. Wizard is ready to install driver and utility. Click **Next** to begin installation.



3. Click **Finish** to restart your computer for the installation to be in effect.



Wireless Network Configuration – PC

Insert the USB Adapter




1. After the computer has restarted, insert the GWU735 Wireless AC1200 Dual-Band USB Adapter into an available USB port.*



***Note:** For optimal performance, connect to a USB 3.0 port.

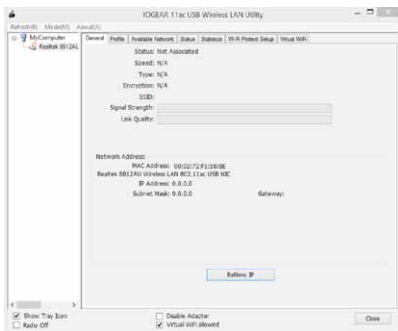
2. A new icon will appear in your system tray once the computer finishes the driver installation.



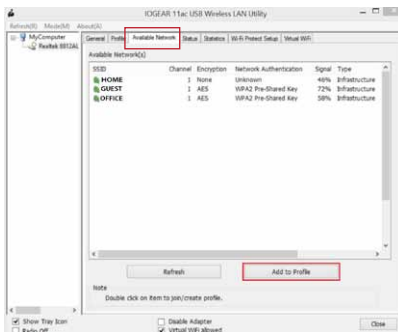
-  - Client mode utility running, but GWU735 is not plugged into computer.
-  - Client mode utility running, GWU735 is plugged in and can now scan for an available Access Point (AP).
-  - Client mode utility running, GWU735 is now connected to your wireless AP.

Connect to a Wireless Network

1. Double-click the wireless utility icon on your desktop to open the IOGEAR USB Wireless LAN Utility.



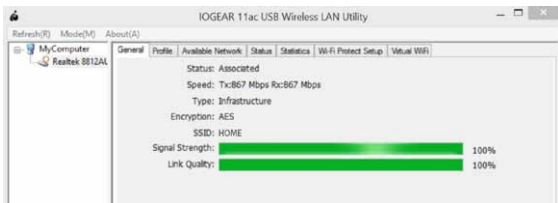
2. Select the **Available Network** tab and wait for the utility to search for available wireless networks. The available networks will be listed in the table. Select the desired network and click **Add to Profile**.



3. Next, the **Wireless Network Properties** window will appear. Enter the network key, then click **OK** to continue.



4. Once connected, the utility will display the **Signal Strength** and **Link Quality**.



5. To set the currently connected network as your default, select the profile tab and click “**Set Default**”.



Wi-Fi Protected Setup™

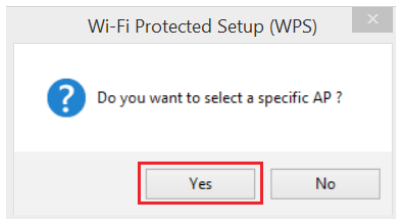
Wi-Fi Protected Setup (WPS) is a simple and secure way to connect to an existing network. Before you start, make sure your wireless router / Access Point (AP) supports WPS. This optional certification feature provides two connection methods: **PIN Input Configuration (PIN)** or **Push-Button Configuration (PBC)**.

Option 1: PIN Input Configuration (PIN) method:

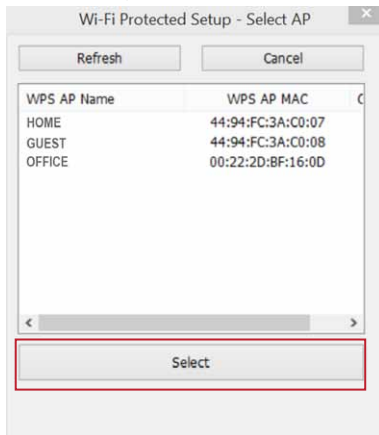
1. Open the Configuration program for your wireless router / Access Point and select the **WPS Client** set-up option.
2. Next, select the **Wi-Fi Protected Setup** tab in the IOGEAR USB Wireless LAN Utility, click the **Pin Input Config (PIN)** button.



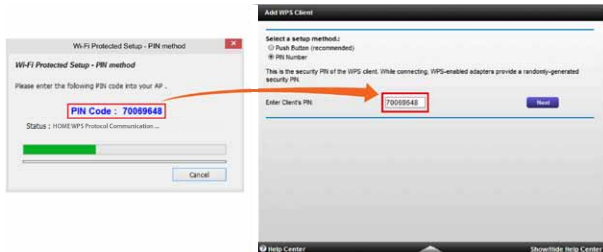
2. Click **Yes** to select a specific AP.



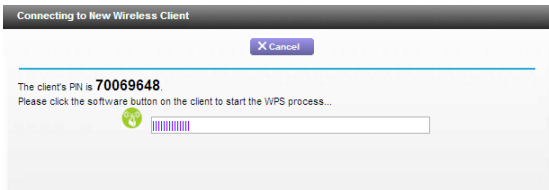
3. Choose the AP to configure, then click **Select**.



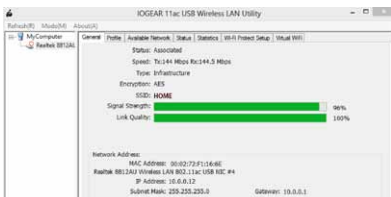
4. Enter the pre-generated PIN code into the Wireless AP WPS client setting. Please refer to your router's user manual for more instructions on how to add a WPS client. The WPS client screen you see may vary depending on your router.



5. Allow it to configure the security setting of your wireless router / AP.



6. You have now successfully added your computer to your router's network.



Success

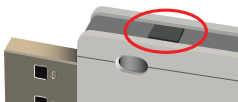
The wireless client **'Windows1'** (00:02:72:F1:16:8E) has been added to the network successfully.

Click OK to go back to the Wi-Fi Protected Setup screen....

OK

Option 2: Push Button Configuration (PBC) method:

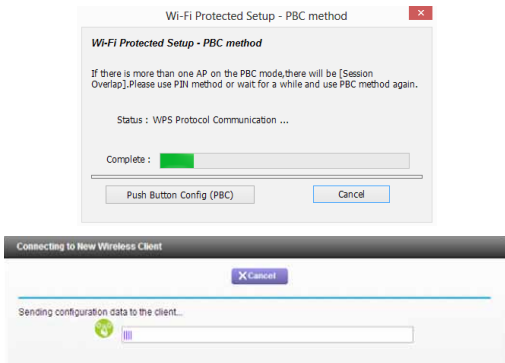
1. Press and hold the WPS button on the side of the GWU735 adapter for 5 seconds or click **Push Button Config (PBC)** button under the **Wi-Fi Protect Setup** tab in the utility.



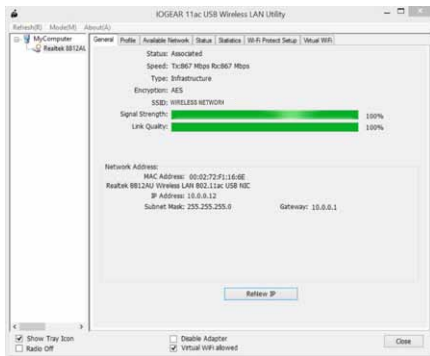
2. Next, press the physical WPS button on your wireless router / AP or virtual button on the WPS configuration page of the wireless router / AP configuration software. The WPS client screen you see may vary depending on your router.



3. Allow it to configure the security setting of your wireless router / AP. The WPS client screen you see may vary depending on your router.



4. You have now successfully added your computer to your router's network.



Success

The wireless client 'Windows1' (00:02:72:F1:16:6E) has been added to the network successfully.

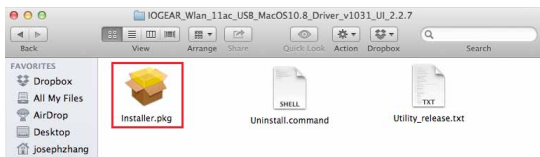
Click OK to go back to the Wi-Fi Protected Setup screen....

OK

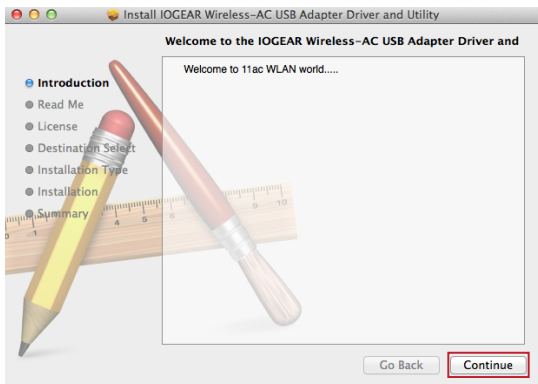
Software Installation – MAC

Note: Do not connect GWU735 Wireless AC1200 Dual-Band Adapter until prompted.

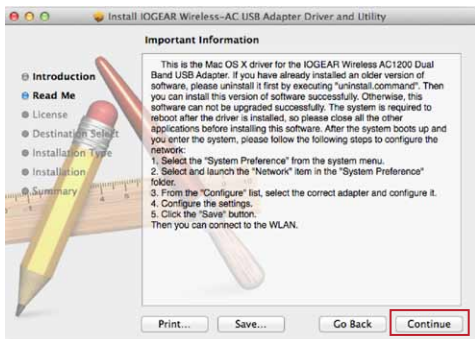
1. Insert the driver installation CD into your computer's CD-ROM drive, open the **MAC** folder, then select the driver folder for your Mac OS system. Double-click **Installer.pkg** to begin the installation.



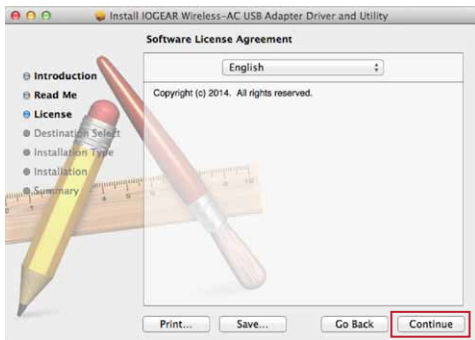
2. On the introduction page, click **Continue** to proceed.



3. Read the important information and click **Continue** to proceed.



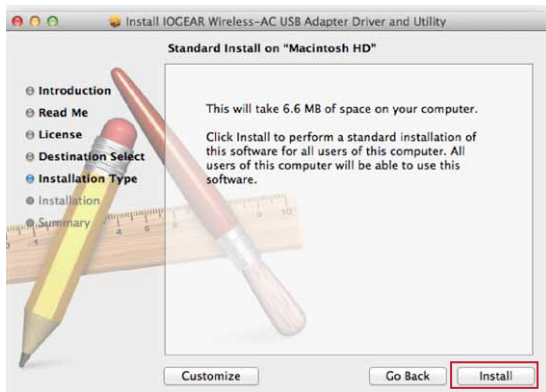
4. Select your language and click **Continue** to proceed.



5. Click **Agree** to continue.



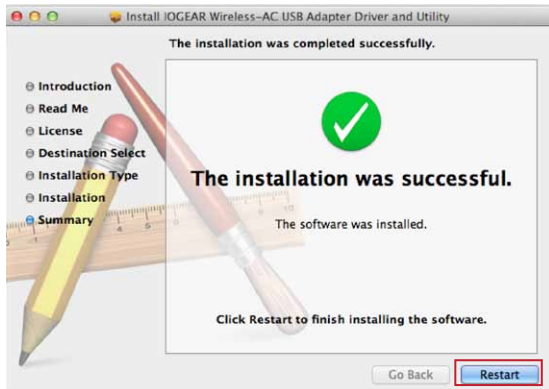
6. Click **Install** to start the driver and utility installation.



7. When prompted, click **Continue Installation** to proceed.



8. Once the installation is successful, click **Restart** to complete the installation process.



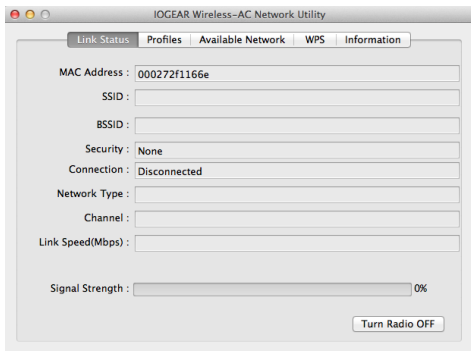
Wireless Network Configuration – MAC

Connecting to a Network

1. After restarting, open the Applications folder on your Mac and the **IOGEAR Wireless-AC Network Utility** will appear.

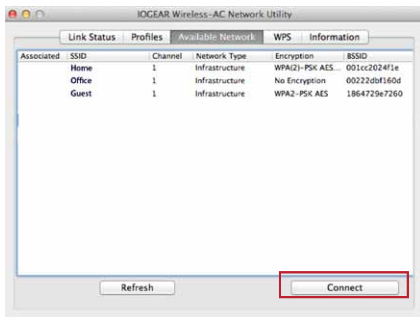


2. Insert GWU735 into an available USB port*, then open the **IOGEAR Wireless-AC Network Utility** in your Applications folder.

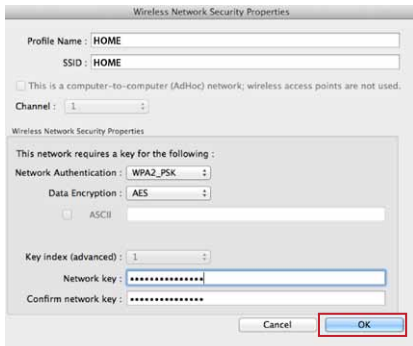


***Note:** For optimal performance, connect to a USB 3.0 port.

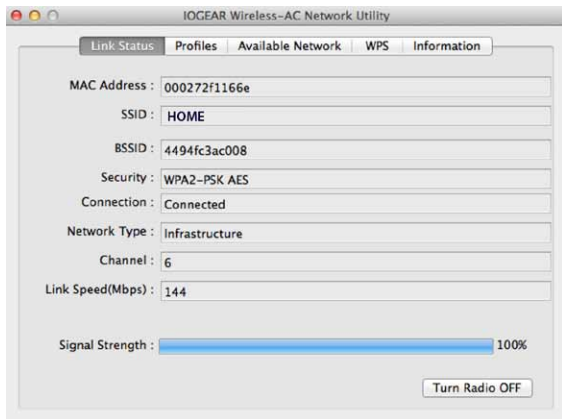
3. To connect to an available network, click the **Available Network** tab, select the desired network, and click **Connect**.



4. Next the **Wireless Network Security Properties** window will appear. Enter the network key, then click **OK** to continue.



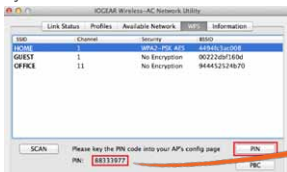
5. Once successfully connected, the utility will display the signal strength of the network.



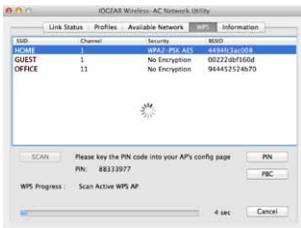
Wi-Fi Protected Setup (WPS) is a simple and secure way to connect your Mac to an existing network. Before you start, make sure your wireless router / Access Point (AP) supports WPS. This optional certification feature provides two connection methods: **PIN Input Configuration (PIN)** or **Push-Button Configuration (PBC)**.

Option 1: PIN Input Configuration Method:

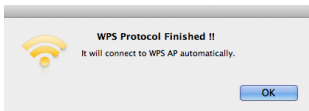
1. Open the configuration program for your Wireless Router / Access Point and select the **WPS Client Setup**. Then select the **PIN Configuration** option.
2. Next, select the **WPS** tab in the **IOGEAR Wireless-AC Network Utility** and enter the pre-generated **PIN** into the **Client PIN** field in your router / AP software.



3. Allow it to configure the security setting of your wireless router / AP. The WPS client screen you see may vary depending on your router.



4. You have now successfully added your computer to your router's network.



Success

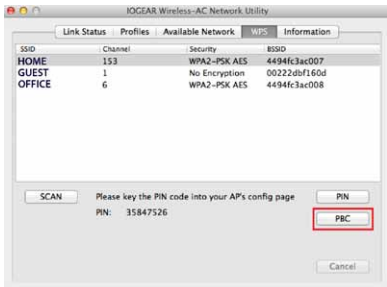
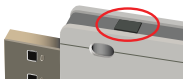
The wireless client 'MAC1'(00:02:72:F1:16:6E) has been added to the network successfully.

Click OK to go back to the Wi-Fi Protected Setup screen...

OK

Option 2: Push-Button Configuration (PBC) Method

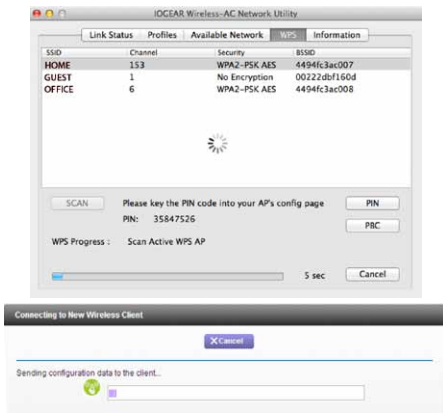
1. Press and hold the WPS Button on the side of the GWU735 adapter for 5 seconds or you can press the virtual **PBC** button under the **WPS** tab of the **IOGEAR Wireless-AC Network Utility**, as shown below.



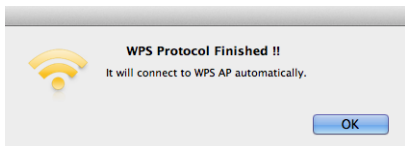
- Next, press the physical WPS button on your wireless router / AP or the virtual button on the WPS configuration page of the wireless router / AP configuration software. The WPS Client screen you see may vary depending on your wireless router.



- Allow it to configure the security setting of your wireless router / AP.



4. You have now successfully added your computer to your router's network.



Federal Communications Commission (FCC) Statement

This equipment has been tested and found to comply with the limits for a Class B digital device, pursuant to Part 15 of the FCC Rules. These limits are designed to provide reasonable protection against harmful interference in a residential setting. This product generates, uses, and can radiate radio frequency energy and, if not installed and used as directed, it may cause harmful interference to radio communications. Although this product complies with the limits for a Class B digital device, there is no guarantee that interference will not occur in a particular installation.

CE Statement

This device has been tested and found to comply with the following European Union directives: Electromagnetic Capability (2004/108/EC), Low Voltage (2006/95/EC) and R&TTED (1999/5/EC).

Limited Warranty

WE'RE HERE TO HELP YOU!
NEED ASSISTANCE SETTING UP THIS PRODUCT?

Make sure you:

1. Visit www.iogear.com for more product information
2. Visit www.iogear.com/support for live help and product support

Warranty Information

This product carries a 3 Year Limited. For the terms and conditions of this warranty, please go to <http://www.iogear.com/support/warranty>

Register online at <http://www.iogear.com/register>

Important Product Information

Product Model _____

Serial Number _____

CE Statement

IOGEAR

iogear.custhelp.com

support@iogear.com

www.iogear.com

19641 Da Vinci, Foothill Ranch, CA 92610



