



# Quick Start Guide

## Wireless Mobile and PC to HDTV

---

**GWAVR**

PART NO. Q1228-b

## Package Contents

1

1 x Wireless A / V Receiver  
1 x HDMI Cable  
1 x Power Adapter

1 x Quick Start Guide  
1 x Warranty/Registration Card

## System Requirements

### PC / Intel® WiDi Technology:

- Intel® WiDi compatible laptop with 3rd Gen Intel® Core™ i3/i5/i7 2.0 GHz processor (CPU) and above, and Intel® WiDi® Technology (Version 3.5 and higher).
- 2GB system memory - 3GB recommended
- Microsoft Windows® 7, Windows® 8 and Windows® 8.1

### Wi-Fi CERTIFIED Miracast™:

- Wi-Fi Miracast enabled mobile devices - Samsung AllShare Certified Devices

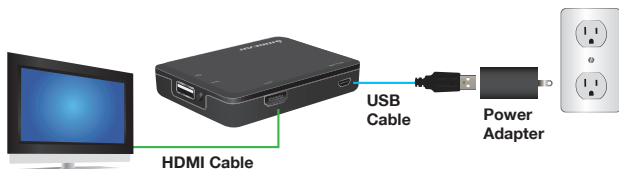
## Overview

1. Power LED
2. USB Type-A
3. Mode Button
4. USB Micro-B Port (Power)
5. HDMI Out Port (Display)



## Hardware Installation

1. Connect the Power Adapter to the GWAVR's Micro-B Port.
2. Connect the display to the GWAVR's HDMI port using an HDMI cable.



3. To switch modes from Intel Wireless Display / Miracast mode to the AirFun / Non-Miracast mode, please press the mode button, wait a second and then press the mode button again.



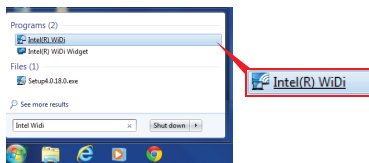
## Connect with Intel WiDi

1. Turn on your HDTV and select the correct HDMI source input.
2. Turn on the GWAVR and it will automatically load in the Intel WiDi mode, and will be ready for connection.



3. Turn on your laptop and launch the Intel WiDi application.\*

Go to Start menu, search for Intel WiDi, and open the application.

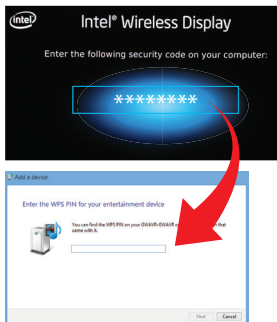


4. Locate and connect to the GWAVR.



\*Note: To update to latest Intel WiDi version, please visit:  
<http://www.intel.com/support/wireless/wtech/iwd/sb/CS-031109.htm>

5. A security code will display if it is the first time you connect your laptop to the GWAVR. Input the code into the Intel WiDi application window.



6. Your HDTV is now wirelessly connected and displaying your laptop screen.

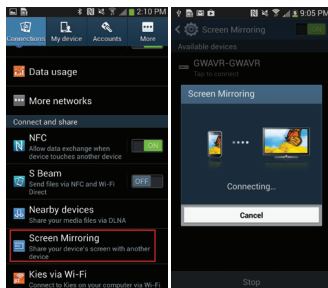


## Connect with Miracast

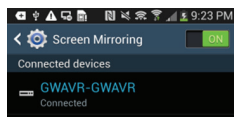
1. Turn on your HDTV and select the correct HDMI source input.
2. Turn on the GWAVR and it will automatically load in the Intel WiDi mode, and will be ready for connection.



3. On your Wi-Fi certified Miracast laptop, tablet, or smartphone, find and launch the wireless application. The name and location of the application may vary depending on device, example shown here is Screen Mirroring for Samsung Galaxy S IV.\*



4. Find and connect to the GWAVR.



5. Your HDTV is now wirelessly connected and displaying your device.



\*Note: For a list of known Miracast-certified devices, please visit:  
<http://www.wi-fi.org/wi-fi-certified-miracast%E2%84%A2>

1. For users with an iPhone, iPad, iPod Touch or a Non-Miracast certified device, go to the Apple App Store / Google Play Store to download the free app "iMediaShare Personal."



**iMediaShare** personal

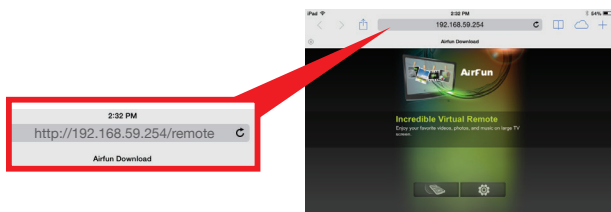
2. Turn on your HDTV, select the correct HDMI source input and turn on GWAVR. When WiDi mode appears on your screen, press the mode button twice until the AirFun screen appears with "Ready for Connection."



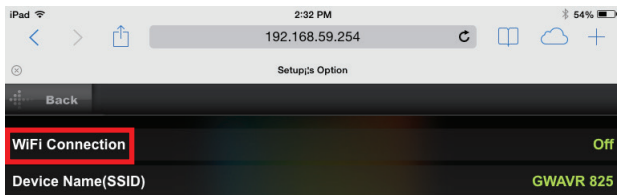
3. Once the GWAVR is in the correct mode, go to your device's Wi-Fi settings and connect to the GWAVR.



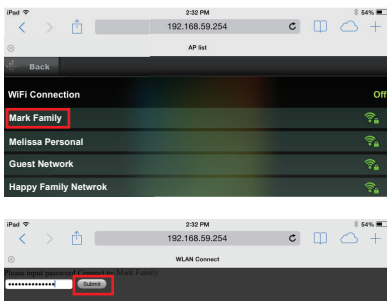
4. Once connected to the GWAVER, open your web browser on your device and type in the setup address on the TV screen (<http://192.168.59.254/remote>). This is the virtual remote that will control the Advanced Settings for the GWAVER.



5. Click on the setup icon to get to the Advanced Settings options menu and then select the "WiFi Connection" option.



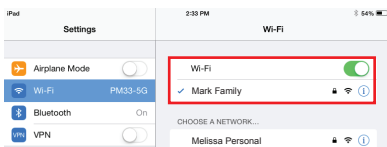
6. Next, select an available network, type in the network password and click Submit to connect.



7. A message will appear which will tell you to connect your device to the same network as the GWAVR.

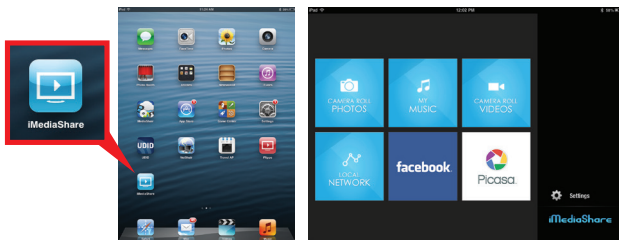


8. Once the GWAVR is connected to your wireless network, go back to your device's Wi-Fi settings and connect to the same network as the GWAVR.

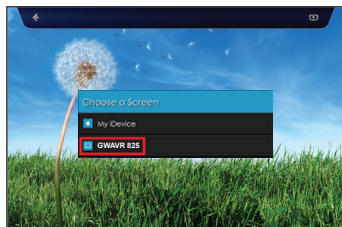




9. Next, open and launch the iMediaShare Personal app on your device. Your device can now stream your photos, videos, music and more wirelessly on your HDTV using this free app.



10. To begin streaming from your device, select the type of content from the options screen and choose the file you would like to display. Select the GWAVER as the screen you would like to display on.



Your content is now displaying on your HDTV!

## Compliance Information

### FCC Statement

This equipment has been tested and found to comply with the limits for a Class B digital device, pursuant to Part 15 of the FCC Rules. These limits are designed to provide reasonable protection against harmful interference in a residential setting. This product generates, uses, and can radiate radio frequency energy and, if not installed and used as directed, it may cause harmful interference to radio communications.

### CE Compliance

This device has been tested and found to comply with the following European Union directives: Electromagnetic Capability (2004/108/EC), Low Voltage (2006/95/EC) and R&TTED (1999/5/EC).

## Limited Warranty

### WE'RE HERE TO HELP YOU! NEED ASSISTANCE SETTING UP THIS PRODUCT?

Make sure you:

1. Visit [www.iogear.com](http://www.iogear.com) for more product information
2. Visit [www.iogear.com/support](http://www.iogear.com/support) for live help and product support

### Warranty Information

This product carries a 1 Year Limited Warranty. For the terms and conditions of this warranty, please go to

<http://www.iogear.com/support/warranty>

Register online at <http://www.iogear.com/register>

### Important Product Information

Product Model \_\_\_\_\_

Serial Number \_\_\_\_\_

## Contact

19641 Da Vinci,  
Foothill Ranch, CA 92610  
[www.iogear.com](http://www.iogear.com)

[iogear.custhelp.com](http://iogear.custhelp.com)  
[support@iogear.com](mailto:support@iogear.com)