



# Quick Start Guide

## Bluetooth Desktop Dock

---

**GKMB01**  
PART NO. Q1220

# Package Contents

1

1 x Bluetooth Desktop Dock main unit  
1 x Device back support

1 x Quick Start Guide  
1 x Warranty/Registration Card

## System Requirements:

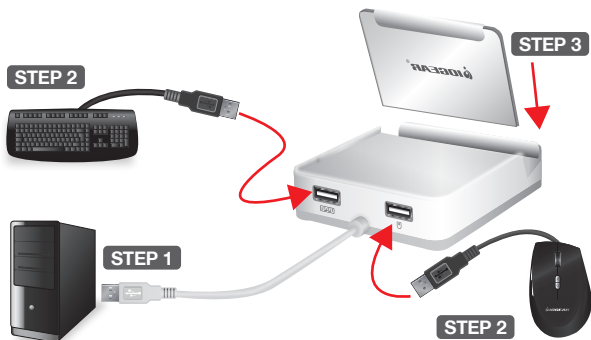
- Mobile Devices: Support Bluetooth HID profile\*
- iOS Devices: iOS 4.2 and up
- Android Devices: 3.0 and up
- Computer: With minimum 1 type A USB port; Windows 2000 and up & Mac OS 10.6 and up
- Keyboard and Mouse: USB based keyboard and mouse
- USB Power Adapter (optional): The Bluetooth Desktop Dock is powered by a computer USB port or a an optional USB power supply when not plugged into a computer

\* Some mobile devices do not support mouse function, please consult your mobile device manufacturers for details.

## Overview

1. Port LED's
2. Keyboard Port
3. Mouse Port
4. USB Cable to the PC
5. Device Back Support





## STEP 1

Plug the Bluetooth Desktop Dock's USB cable into the computer. If it is the first time install, please allow a few seconds for the computer to load the drivers.

## STEP 2

Unplug the USB keyboard and mouse from the computer, and plug them into the Bluetooth Desktop Dock. Perform a quick test by typing a few words to make sure the keyboard and mouse work fine with the computer.

## STEP 3

Install the plastic back support on the Bluetooth Desktop Dock and place your mobile device on the dock.

## STEP 4

Now it is time to connect your Bluetooth mobile devices to the Bluetooth Desktop Dock. If this is the 1st time connection please see Bluetooth pairing. To change out a previously paired devices, you must first delete the previous devices by pressing "**ALT + F6**". The Bluetooth Desktop Dock allows 2 Bluetooth mobile devices to be connected. If you wish to change out both paired devices, press "**ALT + F7**".

# Bluetooth Pairing

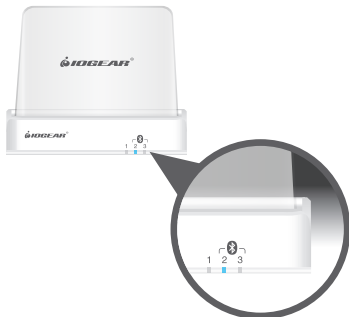
3

## STEP 1

To connect a Bluetooth mobile device, choose either port #2 or port #3 by pressing either “**ALT+F2**” for port #2 or “**ALT+F3**” for port #3.

## STEP 2

Using port 2 as an example, you should see the LED #2 flashing at the front of the Bluetooth Desktop Dock, indicating the unit is searching for other Bluetooth devices to connect.



## STEP 3

Using iPad as an example of the mobile device, select Settings from the home screen of iPad, then select General, and turn on the Bluetooth. (Screen shot 1)

## STEP 4

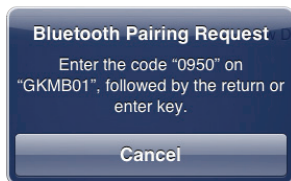


With Bluetooth turned on, the iPad will search for the surrounding Bluetooth devices, you should see GKMB01 as one of the Bluetooth devices in the range. You can see that GKMB01 is not paired with the iPad.



### STEP 5

Select GKMB01, a message will appear on the iPad screen with the PIN code. Type the Pin code on the keyboard and press Enter.



You should see your iPad is connected to the GKMB01.



GKMB01's default connection is to port 1, which is the computer port. To switch to port 2 to type on the mobile device wirelessly connected to port via Bluetooth, type "**ALT + F2**", you can see the LED flashes then turns solid, the keyboard should work on that mobile device now. To switch to port 3, type "**ALT+F3**", you can see the LED #3 flashes then turns solid, the keyboard should work on that port.

To switch back to the computer, type "**ALT+F1**".

Note: Some mobile devices such as iPad do not support mouse function, you need to use the touch screen to navigate to where you need to type.

## Advanced Operation

- View GKMB01 settings: Open a text editor such as Word or Notepad, press **ALT + Context Menu Key**, the GKMB01's settings will automatically type out within the text editor.
- Reset settings: Press **ALT+F7** will clear the current setting and set GKMB01 back to the factory default settings.

## FCC Statement

This equipment has been tested and found to comply with the limits for a Class B digital device, pursuant to Part 15 of the FCC Rules. These limits are designed to provide reasonable protection against harmful interference in a residential setting. This product generates, uses, and can radiate radio frequency energy and, if not installed and used as directed, it may cause harmful interference to radio communications. Although this product complies with the limits for a Class B digital device, there is no guarantee that interference will not occur in a particular installation.

## CE Compliance

This device has been tested and found to comply with the following European Union directives: Electromagnetic Capability (2004/108/EC), Low Voltage (2006/95/EC) and R&TTED (1999/5/EC).

## Limited Warranty

### **WE'RE HERE TO HELP YOU! NEED ASSISTANCE SETTING UP THIS PRODUCT?**

Make sure you:

1. Visit [www.iogear.com](http://www.iogear.com) for more product information
2. Visit [www.iogear.com/support](http://www.iogear.com/support) for live help and product support

### **Warranty Information**

This product carries a 3 Year Limited Warranty. For the terms and conditions of this warranty, please go to <http://www.iogear.com/support/warranty>  
Register online at <http://www.iogear.com/register>

### **Important Product Information**

Product Model \_\_\_\_\_

Serial Number \_\_\_\_\_

## Contact

Toll Free: 866-946-4327 (USA)

Phone: 949-453-8782

Address: 19641 Da Vinci, Foothill Ranch, CA 92610, USA

Web Site: [www.iogear.com](http://www.iogear.com)

E-mail: [support@iogear.com](mailto:support@iogear.com)