



Quick Start Guide

Gear Power Ultra Capacity Mobile Power Station

GMP10K

PART NO. Q1363

Package Contents

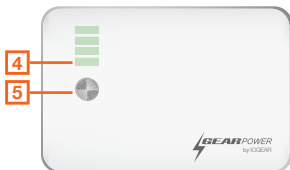
1

1 x Mobile Power Station
1 x 3' USB Charging Cable
1 x 5V 1A Power Adapter

1 x Carrying Pouch
1 x Quick Start Guide
1 x Warranty / Registration Card

Overview

1. USB Type A Female port (Output) (1A)
2. Micro-USB Female port (Input)
3. USB Type A Female port (Output) (2.1A)
4. LED Charging/Capacity indicator
5. Battery capacity button

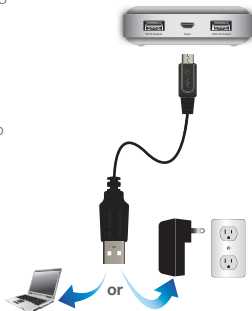


Charging GearPower

Connect the GearPower Mobile Power Station to a power source using the included Micro USB cable and power adapter.

1. Plug the USB type A connector into the USB port of the 5V 1A power adapter. Plug power adapter into power outlet
2. Insert the Micro USB connector into the Micro USB port of the Mobile Power Station.
3. The LED charging indicator will light up "Green" and blink. Once the Mobile Power Station is fully charged, all four LED charging indicators will light up solid "Green".

The USB charging cable can be plugged in to your computer's available USB port or any wall-plug style power source with the included 5V 1A power adapter.



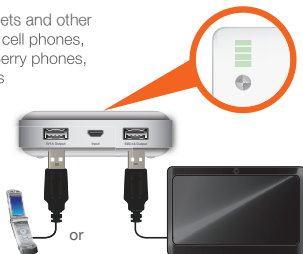
Charging Mobile Devices

2

Users need to identify the power supply current they need for their devices. It usually can be found in the mobile device manual.

- 1A output port supports: cell phones, smartphones, iPhones, iPods, BlackBerry phones, digital cameras and most MP3 players and other devices which require 1A power supply (This port will not support devices requiring 2.1A power source)
- 2.1A output port supports: iPads, tablets and other devices which require 2.1A as well as cell phones, smartphones, iPhones, iPods, BlackBerry phones, digital cameras and most MP3 players

1. Connect the USB Type A connection end of the charging cable to the desired power output port (1A or 2.1A)
2. Connect the other end to your mobile device
3. Press the battery capacity button to begin charging



Product Caring

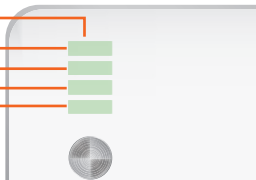
- Keep Mobile Power Station dry and away from moisture and corrosive materials.
- Do not wash Mobile Power Station
- Re-charge Mobile Power Station once every three months when not in use.

LED Battery Indicator

This chart shows the various stages of power availability and consumption on Mobile Power Station's LED battery indicator.

*When 1st LED flashes, there is < 20% power.

1st LED*	
20-40%	
40-60%	
60-80%	
80-100%	



Do not damage the rechargeable battery. A damaged battery can cause an explosion or fire, and can result in personal injury and/or property damage. To prevent injury or damage:

- Do not use or charge the battery if it appears to be damaged. Signs of damage include, but are not limited to, discoloration, warping, and leaking battery fluid.
- Do not expose the battery to fire, high temperature, or direct sunlight.
- Do not immerse the battery in water.
- Do not use or store the battery inside a vehicle during hot weather.
- Do not drop or puncture the battery.
- Do not open the battery or short-circuit its contacts.

Use the battery only for its intended use and according to the instructions in the product documentation.

Avoid contact with the rechargeable battery if it appears to be leaking. Battery fluid is corrosive, and contact with it can result in personal injury and/or property damage. To prevent injury or damage:

- If the battery leaks, avoid contact with the battery fluid.
- If battery fluid gets into your eyes, immediately rinse your eyes with clean water and seek medical attention. Do not rub your eyes!
- If battery fluid gets onto your skin or clothing, immediately use clean water to wash off the battery fluid.

Charge and use the rechargeable battery only in strict accordance with the instructions.

- Charging or using the battery in unauthorized equipment can cause an explosion or fire, and can result in personal injury and/or equipment damage. To prevent injury or damage:
 - Do not charge or use the battery if it appears to be damaged or leaking.
 - Discontinue charging a battery that gives off extreme heat or a burning odor.
 - Use the battery only in the equipment that is specified to use it.

Never dispose of batteries in the garbage. Disposal of batteries in the garbage is unlawful under state and federal environmental laws and regulations. Always take used batteries to your local battery-recycling center.

FCC Statement

This equipment has been tested and found to comply with the limits for a Class B digital device, pursuant to Part 15 of the FCC Rules. These limits are designed to provide reasonable protection against harmful interference in a residential setting. This product generates, uses, and can radiate radio frequency energy and, if not installed and used as directed, it may cause harmful interference to radio communications. Although this product complies with the limits for a Class B digital device, there is no guarantee that interference will not occur in a particular installation.

CE Compliance

This device has been tested and found to comply with the following European Union directives: Electromagnetic Capability (2004/108/EC), Low Voltage (2006/95/EC) and R&TTED (1999/5/EC).

Limited Warranty

WE'RE HERE TO HELP YOU! NEED ASSISTANCE SETTING UP THIS PRODUCT?

Make sure you:

1. Visit www.iogear.com for more product information
2. Visit www.iogear.com/support for live help and product support

Warranty Information

This product carries a 3 Year Limited Warranty. For the terms and conditions of this warranty, please go to <http://www.iogear.com/support/warranty>
Register online at <http://www.iogear.com/register>

Important Product Information

Product Model _____

Serial Number _____

Contact

Toll Free: 866-946-4327 (USA)

Phone: 949-453-8782

Address: 19641 Da Vinci, Foothill Ranch, CA 92610, USA

Web Site: www.iogear.com

E-mail: support@iogear.com