

Federal Communications Commission (FCC) Statement

This product has been tested and found to comply with the limits for a Class B device, pursuant to part 15 of the FCC Rules. It is intended for use in residential setting, but may also be used in commercial or industrial setting.

CE Compliance

This device has been tested and found to comply with the following European Union directives: Electromagnetic Capability (89/336/EMC), Low Voltage (73/23/EEC) and R&TTED (1999/5/EC).

Limited Warranty

WE'RE HERE TO HELP YOU! NEED ASSISTANCE SETTING UP THIS PRODUCT?

Make sure you:

1. Use the live chat at www.iogear.com to try and solve any issues you may be having with the product
2. Visit the Tech Info Library/FAQ on www.iogear.com (under the Support tab)
3. Call the tech support line at 1-866-946-4327 (U.S. only) or 949-453-8782

Warranty Information

This product carries a 3 Year Limited Warranty. For the terms and conditions of this warranty, please go to <http://www.iogear.com/support/warranty> or call 1-866-946-4327

Register online at
<http://www.iogear.com/register>

Important Product Information

Product Model _____
Serial Number _____

Limited Warranty

Toll Free: 866-946-4327 (USA)
Phone: 949-453-8782
Address: 19641 Da Vinci,
Foothill Ranch, CA 92610, USA

Web Site: www.iogear.com
E-mail: support@iogear.com

About Us



FUN

IOGEAR offers connectivity solutions that are innovative, fun, and stylish, helping people enjoy daily life using our high technology products.



GREEN

IOGEAR is an environmentally conscious company that emphasizes the importance of conserving natural resources. The use of our technology solutions helps reduce electronic waste.



QuickStart Guide

SuperSpeed USB 3.0 4-Port Hub

Package Content

- 1 x SuperSpeed USB 3.0 4-Port Hub
- 1 x SuperSpeed USB 3.0 Cable (Micro-B to Standard-A)
- 1 x Power Adapter
- 1 x Quick Start Guide
- 1 x Warranty Card

CE Compliance

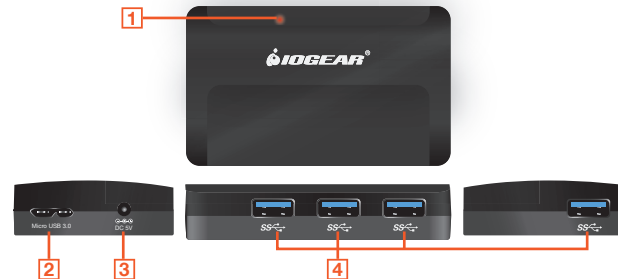
PC

- Windows XP, Windows Vista, and Windows 7
- Available USB port (USB 3.0 port for SuperSpeed mode)

Mac

- Works with USB 2.0 and 1.1

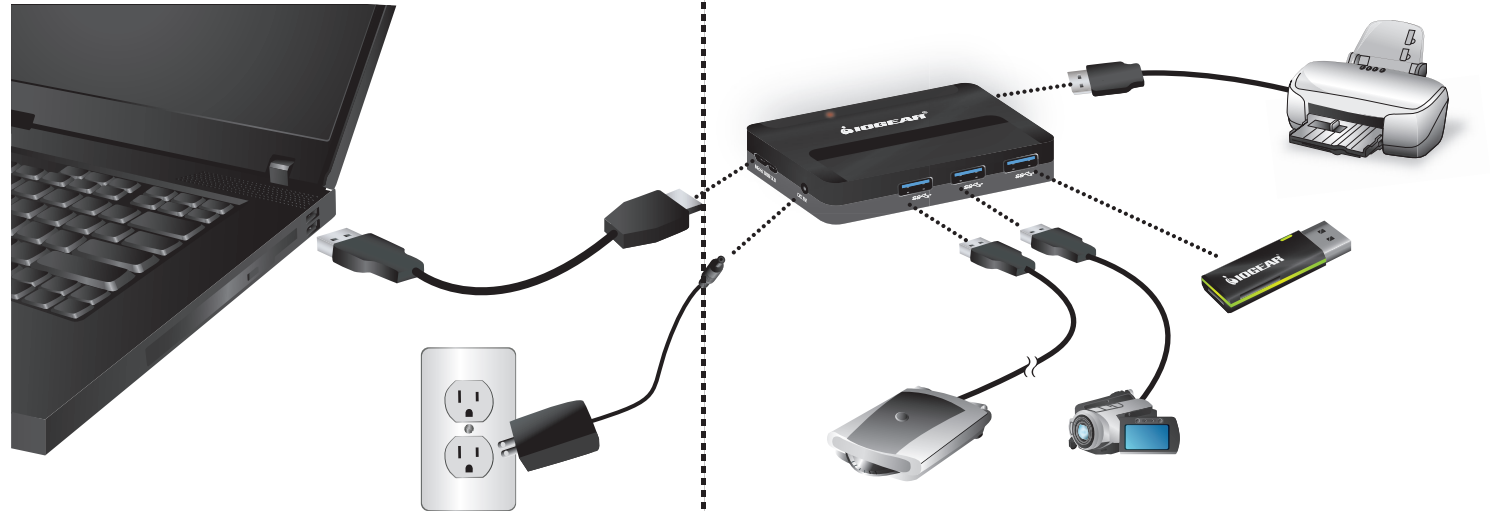
Product Overview



1. Power indicator LED
2. USB 3.0 Micro-B port
3. Power jack
4. USB 3.0 Standard-A ports

Hardware Installation

1. Plug the AC Power Adapter into a power outlet and the opposing end of the cable into the hub's AC power jack
2. Connect the hub to your computer using the included USB 3.0 cable
 - Plug Micro-B connector, labeled "B" on connector, into the hub
 - Plug the Standard-A connector, labeled "SS" on connector, into your computer's SS USB 3.0 port.*



3. Red LED light will indicate hub is receiving power
4. Plug the USB devices** you wish to connect to your computer into the hub

* Hub is compatible with USB 3.0, 2.0, and 1.1.

** SuperSpeed rates are possible when hub is plugged into a computer's USB 3.0 port and the peripherals connected to the hub are USB 3.0 devices.