

FCC Statement

This product has been tested and found to comply with the limits for a Class B device, pursuant to part 15 of the FCC Rules. It is intended for use in residential setting, but may also be used in commercial or industrial setting.

CE Compliance

This device has been tested and found to comply with the following European Union directives: Electromagnetic Capability (89/336/EMC), Low Voltage (73/23/EEC) and R&TTE (1999/5/EC).

Limited Warranty

WE'RE HERE TO HELP YOU! NEED ASSISTANCE SETTING UP THIS PRODUCT?

Make sure you:

1. Use the live chat at www.iogear.com to try and solve any issues you may be having with the product
2. Visit the Tech Info Library/FAQ on www.iogear.com (under the Support tab)
3. Call the tech support line at 1-866-946-4327 (U.S. only) or 1-949-453-8782

Warranty Information

This product carries a 3 Year Limited Warranty. For the terms and conditions of this warranty, please go to <http://www.iogear.com/support/warranty> or call 1-866-946-4327

Register online at <http://www.iogear.com/register>

Contact

Address: 19641 Da Vinci, Foothill Ranch, CA 92618 USA
Toll Free: 866-9-IOGEAR
Phone: 949-453-8782
Web site: www.iogear.com
Email: support@iogear.com

About Us



FUN

IOGEAR offers connectivity solutions that are innovative, fun, and stylish, helping people enjoy daily life using our high technology products.



GREEN

IOGEAR is an environmentally conscious company that emphasizes the importance of conserving natural resources. The use of our technology solutions helps reduce electronic waste.

© 2011 IOGEAR®



Quick Start Guide

USB 2.0 Fast Ethernet Adapter

GU2100
Q1178-a

Package Contents

- 1 x USB 2.0 Ethernet Adapter
- 1 x CD Driver
- 1 x Quick Start Guide
- 1 x Warranty Card

System Requirements

PC:

- Microsoft Windows® 7, Windows Vista® or Windows® XP (32 & 64-bit)
- One available USB port

MAC:

- Mac compatible Mac OS 10.3 and above (No driver needed for Mac OS 10.6 or above)
- One available USB port

Overview

Start Here!

1. Network LED Indicators
2. Ethernet Port
3. USB Type A Connector



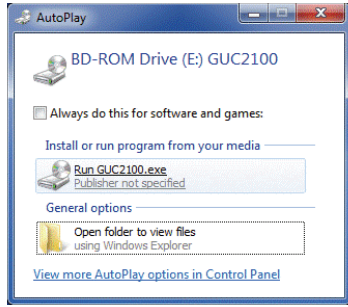
1

Windows Software Installation

1. Insert CD into the CD drive

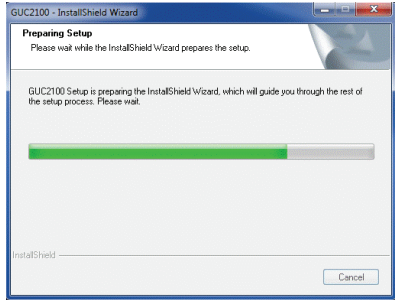


2. Click **Run GUC2100.exe**

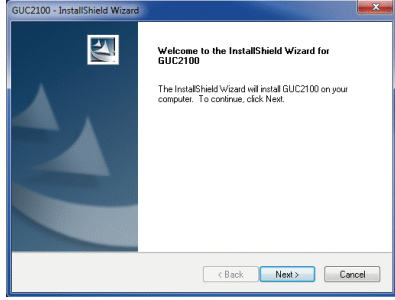


2

3. GUC2100 Setup will be prepared in InstallShield Wizard

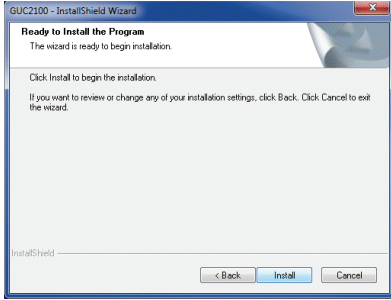


4. Click **Next** to begin the installation process

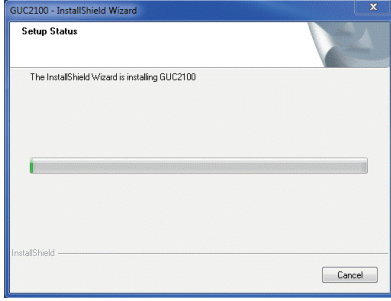


3

5. Click **Install** to start installation on your computer



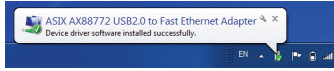
6. InstallShield Wizard will quickly install the driver software and window will close



4

PC Hardware Installation

1. Once the GUC2100 software driver is installed successfully, plug the GUC2100 into the available USB port in your PC. Your PC Taskbar will indicate successful driver installation.



2. Connect the Ethernet cable from your network hub, switch, or router to the Ethernet port on the GUC2100.

The Network LED should light up green to indicate a proper physical connection between the adapter and network. If the Network LED does not light up, please verify the cable connection between all network devices.



5

Mac Software Installation

Note: Mac OS 10.5 and earlier users must install CD driver prior to hardware installation.

1. Insert CD-ROM into the CD drive



2. Double-click on GUC2100 CD image on desktop



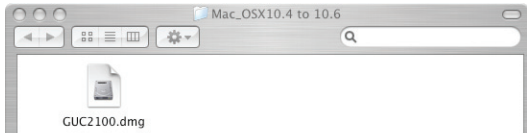
3. Double-click **Mac** Folder



4. Double-click the folder which represents your operating system



5. Double-click on the **GUC2100.dmg** icon

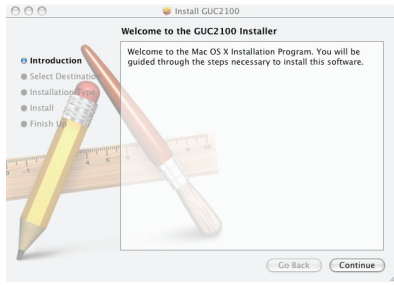


6. Double-click on the **GUC2100.pkg** icon

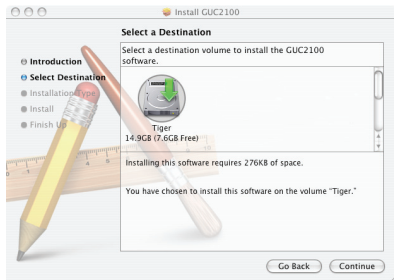


6

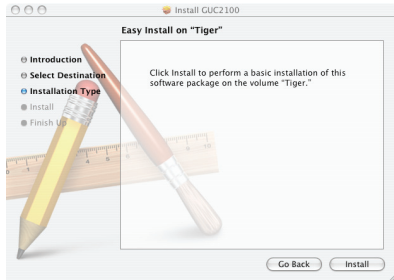
6. Click **Continue** after reading the introduction message



7. Click **Continue** on destination you wish to install this driver



8. Click **Install**

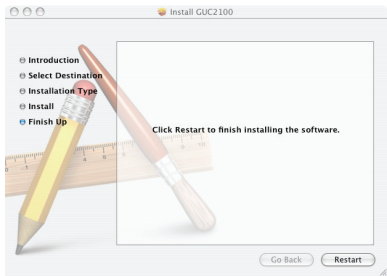


7

9. Click **Continue Installation** after reading restart message

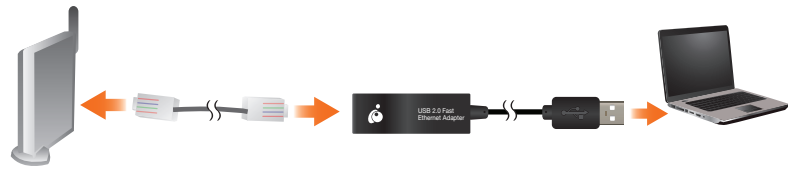


10. Click **Restart** to continue installation process (Computer will shut down and restart)



Mac Hardware Installation

1. Once the Mac has rebooted from the Restart, plug in the USB 2.0 Fast Ethernet adapter into the available USB 1.1 or 2.0 port.
2. Connect your Ethernet cable from your network hub, switch, or router to the Ethernet port on the USB 2.0 Fast Ethernet adapter.

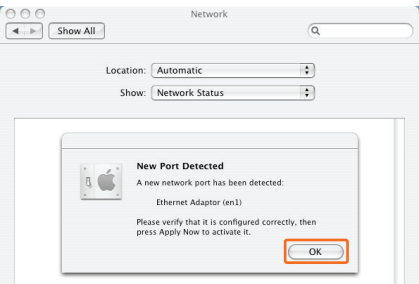


8

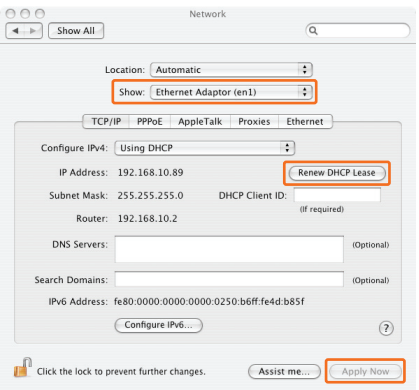
3. Verify the driver in **System Preferences > Network**, Click **Network**



4. Click **OK** to acknowledge new port detection



5. **Show:** Select **Ethernet Adaptor (en1)** from dropdown menu. Click **Renew DHCP Lease**. Click **Apply Now**



The Network LED should light up green to indicate a proper physical connection between the adapter and network. If the Network LED does not light up, please verify the cable connection between all network devices.

Note: Mac OS 10.5 and earlier users must install CD driver prior to hardware installation.

9