

Warranty

WE'RE HERE TO HELP YOU! NEED ASSISTANCE SETTING UP THIS PRODUCT?

Make sure you:

1. Use the live chat at www.iogear.com to try and solve any issues you may be having with the product
2. Visit the Tech Info Library/FAQ on www.iogear.com (under the Support tab)
3. Call the tech support line at 1-866-946-4327 (U.S. only) or 1-949-453-8782

Warranty Information

This product carries a Three Year Limited Warranty. For the terms and conditions of this warranty, please go to <http://www.iogear.com/support/warranty> or call 1-866-946-4327

Register online at <http://www.iogear.com/register>

Important Product Information

Product Model _____

Serial Number _____

About Us

FUN

IOGEAR offers connectivity solutions that are innovative, fun, and stylish, helping people enjoy daily life using our high technology products.

GREEN

IOGEAR is an environmentally conscious company that emphasizes the importance of conserving natural resources. The use of our technology solutions helps reduce electronic waste.



© 2010 IOGEAR®



QuickStart Guide

50-in-1 Portable Card Reader

GFR210
PART NO. Q1342-a

Package Content

- 1 x Portable Card Reader
- 1 x Quick Start Guide
- 1 x Warranty / Registration Card

Requirements

PC or Mac with one available USB port

Flash Card Compatibility List

CF: CF / CF Type I / CF Type II / Microdrive / CF Ultra / CF Ultra II / CF Ultra X / CF Pro II / CF Extreme / CF Extreme II / CF Extreme III / CF PSP II / CF Super

Olympus® DC card: Olympus DC card / DC card (M) / DC card (H)

SD: SD / SDHC / miniSD* / miniSDHC* / Extreme SD / Extreme III SD / Ultra II SD / Ultra II Plus SD / SD HS / SD Pro / SD Pro C / SD Pleomax / SD Pro HS / SD Ultra X / SD Turbo / SD Super

MMC: MMC / MMC Pleomax / MMC Pro / HS MMC / RS MMC / RS MMC Pleomax / RS MMC Speed / RS MMC Max / MMC Mobile / MMC Mobile ProC / MMC Plus / MMC Micro*

T-Flash: microSD / microSDHC / T-Flash

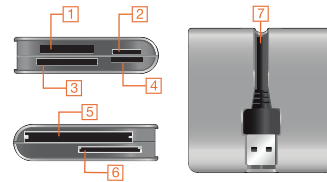
MS: Memory Stick / MS Pro / MS Duo / MS Pro Duo / MS MG / MS MG Pro / HS MS Pro / HS MS Pro Duo

M2: MS Micro

*Need adapter

Device Overview

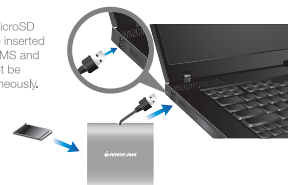
1. MS slot (card facing up)
2. M2 slot (card facing down)
3. SD slot (card facing down)
4. microSD slot (card facing down)
5. CF slot (card facing up)
6. Olympus DC slot (card facing down)
7. USB Type A connector



Hardware Installation

1. Plug in the USB Type A connector to the available USB port.
2. Insert compatible memory cards to the specific slots. Please refer to the image on the back of the device for proper card insert directions.
3. You can access multiple cards at the same time.

Note: SD and microSD cards cannot be inserted simultaneously; MS and M2 cards cannot be inserted simultaneously.



Federal Communications Commission (FCC) Statement

This equipment has been tested and found to comply with the limits for a Class B digital device, pursuant to Part 15 of the FCC Rules. These limits are designed to provide reasonable protection against harmful interference in a residential setting. This product generates, uses, and can radiate radio frequency energy and, if not installed and used as directed, it may cause harmful interference to radio communications. Although this product complies with the limits for a Class B digital device, there is no guarantee that interference will not occur in a particular installation.

CE Compliance

This device has been tested and found to comply with the following European Union directives: Electromagnetic Compatibility (89/336/EMC), Low Voltage (73/23/EEC) and R&TTE (1999/5/EC).