



QuickStart Guide

Wireless HD Computer to TV Kit

GUWAVKIT2
PART NO. Q1142-b

Package Contents

Start Here!

- 1** 1 x Wireless A / V Receiver (device adapter + A / V base)
- 2** 1 x Wireless USB Transmitter (for computer)
- 3** 1 x Power Adapter
 - 1 x Quick Start Guide
 - 1 x Installation CD
 - 1 x Warranty / Registration Card



1



2



3

Requirements

- Microsoft Windows® 7, Windows Vista® SP2 or Windows® XP (32-bit) SP3
- 1.6 GHz processor (CPU) with 1GB of system memory (RAM) with available USB 2.0 port
- Flat-panel (LCD / Plasma / DLP) TV display or Projector with HDMI, VGA (RGB / D-sub 15-pin / PC), or DVI port (HDMI cable, VGA cable and DVI adapter not included). Does NOT work with CRT tube TV
- TV or audio system with HDMI®, 3.5mm audio jack, or RCA Connectors


"HDMI, the HDMI Logo, and High-Definition Multimedia Interface are trademarks of HDMI Licensing LLC in the United States and other countries."

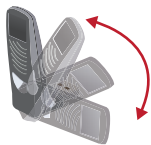
Software Installation

1. Insert the CD-ROM and follow the instructions to install the driver software.
2. A new Wireless USB icon will appear in the system tray after the installation.
3. Restart your system for the configuration changes made to fully take effect.



Transmitter Installation

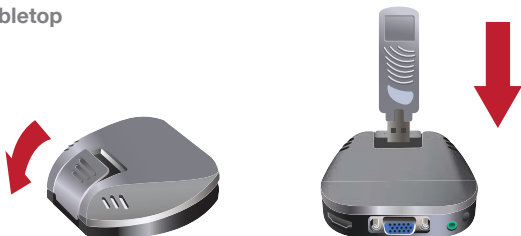
1. Plug the Wireless USB Transmitter to a USB 2.0 port on your computer (the tray icon will change from Gray to Red ).
2. Please keep the Transmitter in upright position only.



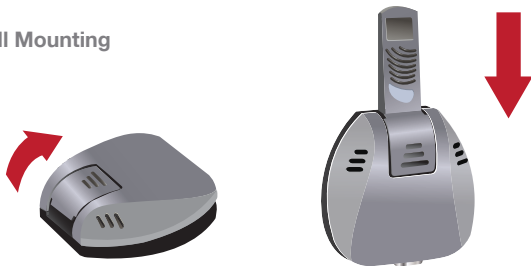
Receiver Installation

1. Depending on your installation application, slide the shutter to show the USB port.
2. Insert the Device Adapter.
3. Keep Device Adapter in upright position only.



Tabletop



Wall Mounting





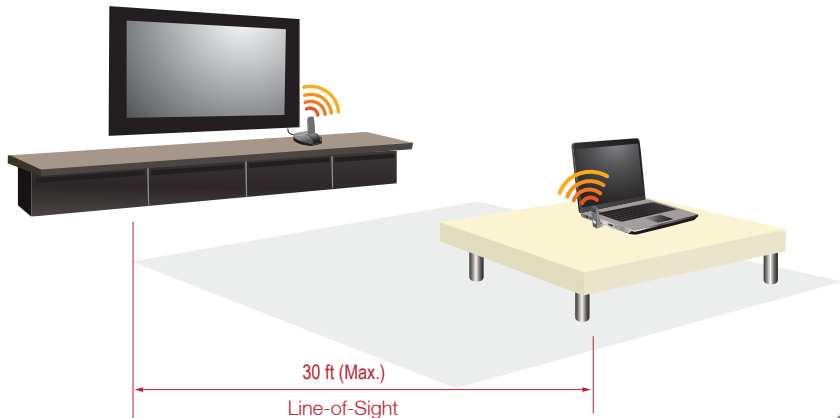
Cords and Cables

1. Connect the A / V Base using the HDMI cable or a combination of VGA and audio (3.5mm) cables (sold separately).
2. Slide in the prong changer to the AC adapter first. Connect the power cable to the Black port. Tray icon turns Green  and the display icon  appears.
3. Change your TV's input source setting accordingly (HDMI or VGA). Refer to the operating instructions supplied with your TV or display. .



Configuration

1. Keep your Wireless Transmitter & Receiver at Max 30 ft. within line-of-sight.
2. Now you should be able to watch the same content as your laptop's screen on your HDTV - **Mirror** mode is set as default.
3. In Mirror Mode, the screen resolution is chosen automatically for both the laptop and the HDTV. For better resolution and performance, you may change the setting to Extended mode under the display icon  in the system tray. This mode creates an extended desktop environment for you to drag and drop various applications to your preferred monitor or TV. For example, you can watch video on your TV while working on the spreadsheet from your laptop.
4. Refer to your TV's manual to adjust TV's aspect ratio to show the full screen. You can also use the "Fit to TV" function from the display icon  to match your TV's resolution.



Troubleshooting

General Troubleshooting

Minor issues can generally be resolved by checking the following:

- Make sure that the TV was set on the correct “Input” source, such as “HDMI 1”
- Detach and reattach the transmitter from your computer’s USB port, wait for the connection to re-establish (may take a few seconds)
- Power cycle the Wireless HD receiver
- Change the display mode via the Displaylink GUI, or OS’ Display Properties between “Extended” and “Mirror” mode



Extended Mode

(extend your desktop area)



Mirror Mode

(duplicates what is on the primary display)

Audio Setting

- After the installation, your computer should direct the Audio to the AV adapter. If not, please verify that the “USB PnP Sound Device” is selected as your Default Sound Playback Device:
- Right click on the Speaker icon at the right corner of your system tray, or go to Start -> Control Panel -> Sounds and Audio Devices, then select Audio tab.

If there is still no sound coming from the TV, restart the media player, reload the Website, or reopen the media file.

Troubleshooting

Video Playback

Under the display icon in the tray 



- If available it is recommended to use "Optimize for Video"
- Use "Extended Mode", and limit the extended screen resolution to 720p (1280 x 720)

Online Video streaming: Windows XP

- Make sure to disable "Hardware Acceleration" on your Flash Player
- Right click on the video you're watching, choose "Settings"
- Uncheck "Enable hardware acceleration" box




Windows Vista / Windows 7 Users

- Right click the desktop and select "Personalize"
- Select "Windows Color and Appearance", then select "Windows Aero" from the Color scheme list

Known Issues

- Many DVD and Blu-ray movie discs have copy protection mechanisms that prevent playback on this Wireless TV kit. However, you can play discs containing the personal content you created.

*Need more info? Right-click the Wireless USB Manager taskbar icon  and select "Help" or view the Tutorial Video included in the software CD-ROM

Federal Communications Commission (FCC) Statement

This product has been tested and found to comply with the limits for a Class B device, pursuant to part 15 of the FCC Rules. It is intended for use in residential setting, but may also be used in commercial or industrial setting.

Limited Warranty

WE'RE HERE TO HELP YOU! NEED ASSISTANCE SETTING UP THIS PRODUCT?

Make sure you:

1. Use the live chat at www.iogear.com to try and solve any issues you may be having with the product
2. Visit the Tech Info Library/FAQ on www.iogear.com (under the Support tab)
3. Call the tech support line at 1-866-946-4327 (U.S. only) or 949-453-8782

Warranty Information

This product carries a 1 Year Limited Warranty.

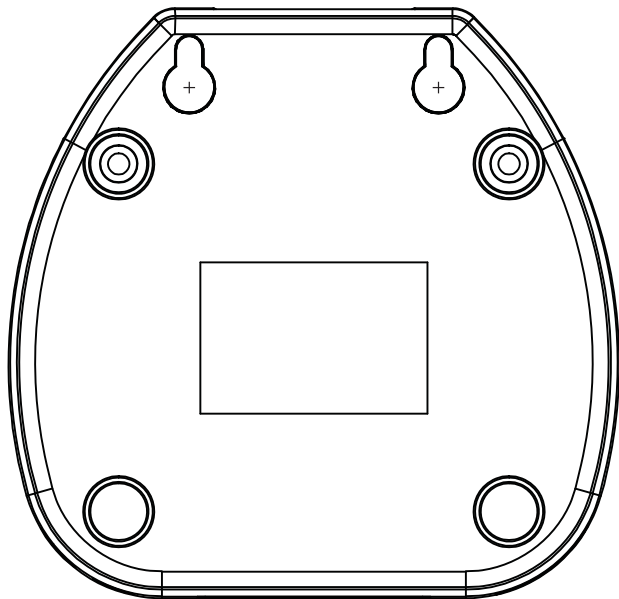
For the terms and conditions of this warranty, please go to <http://www.iogear.com/support/warranty> or call 1-866-946-4327

Contact

Toll Free 866-946-4327 (USA)
Phone: 949-453-8782
19641 Da Vinci
Foothill Ranch, CA 92610

A / V Base Mounting Template

For your convenience, you may use this drill template for easy marking of hole positions for mounting the A / V base. Please make sure the chosen screws / fixtures are suitable for use in the wall to which they are to be attached.





About Us



FUN

IOGEAR offers connectivity solutions that are innovative, fun, and stylish, helping people enjoy daily life using our high technology products.



GREEN

IOGEAR is an environmentally conscious company that emphasizes the importance of conserving natural resources. The use of our technology solutions helps reduce electronic waste.