

Wireless-G USB 2.0 Flex Adapter

GWU513 Quick Start Guide

Read this guide thoroughly and follow the installation and operation procedures carefully to prevent any damage to the unit and/or any of the devices it connects to.

GWU513 package contains:

- 1 802.11g USB Adapter
- 1 Quick Start Guide
- 1 Installation & Manual CD-ROM
- 1 Warranty/Registration Card

Copyright © 2003 IOGEAR®

All brand names and trademarks are the registered property of their respective owners

PKG-M0095/QS



1. Welcome

Thank you for choosing IOGEAR® to serve your wireless needs. In no time you will be sharing files or surfing the Internet wirelessly. We hope you will have as much fun using your IOGEAR® Wireless-G USB 2.0 Flex Adapter, as we had designing it.

Rest assured, your IOGEAR® Wireless-G USB 2.0 Flex Adapter is built rock-solid to ensure maximum up-time for you to stay up-and-running. If for any reason you have a problem, we stand behind our products with an industry-leading 3 year factory warranty, so you can have peace-of-mind with your current and future IOGEAR® purchases.

We want you to be happy with your purchase, so we have made every effort to ensure product quality, reliability, and ease-of-use.

Note:

Your order has been carefully packaged and inspected, and we hope you are pleased with the IOGEAR® product you purchased. Please inspect the contents of the package to ensure that you have received all items and that nothing has been damaged. If you discover a problem, please contact your dealer immediately for assistance.

Contact Information:

949-453-8782

23 Hubble

Irvine, CA 92618

USA

www.iogear.com

support@iogear.com

2. Hardware Requirements & Features

Requirements

- Pentium® class PC with 200MHz or faster CPU
- Microsoft® Windows® 98/ME/2000/XP
- Available USB 2.0 port
- CD-ROM Drive

Features

- Dual-axial design allows the adapter to bend and pivot for maximum reception and flexibility in different working environments
- 54 Mbps wireless connection speed - up to five times faster than previous 802.11b technology
- Hi-Speed USB 2.0 technology allows for the maximum wireless data transfer speed possible
- Backward compatible with 802.11b wireless networks, access points, hot spots and other devices
- Ultra-easy installation in just a few simple steps
- Solid 3-year manufacturer warranty - built to last!

3. Installation

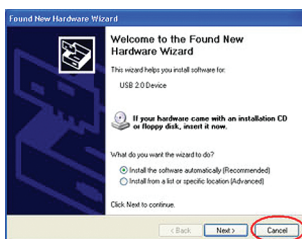
To have your Wireless-G USB 2.0 Flex Adapter appropriately installed, please read this guide carefully.

Step. 1 ▼

Plug your Wireless-G USB 2.0 Flex Adapter into a USB 2.0 port on your PC.

Step. 2 ▼

Your system will detect the device, and the Found New Hardware Wizard dialog box will appear. Choose **Cancel** to proceed.

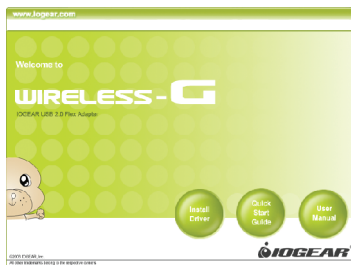


Step. 3 ▼

Insert the supplied Setup CD into your CD-ROM drive, and the Setup Wizard will run automatically. If it does not, please manually execute Index.htm.

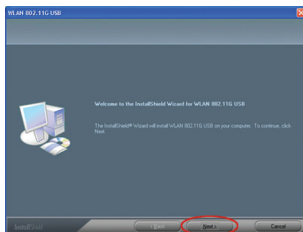
Step. 4 ▼

From the prompted startup window, choose Install Driver to begin the installation.



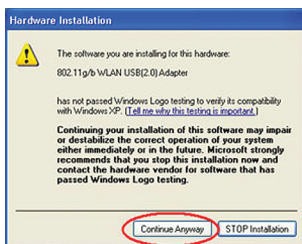
Step. 5

Click Next in the WLAN 802.11G USB window to proceed. The system will start to copy the drivers found.



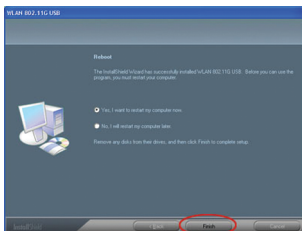
Step. 6

Windows will notify you that the driver has not passed the Windows Logo testing. Because the USB adapter has been tested to work with Windows XP, please choose Continue Anyway in the Hardware Installation dialog box.








Step. 7

On the Reboot screen, you may choose either Yes, I want to restart my computer now or No, I will restart my computer later. Then click Finish to complete the installation.



Step. 8 ▼

After rebooting, you will find the Wireless-G Configuration Tool tray icon, appeared in the system tray. Note that different colors of the tray icon reveal different status of the Internet connection. Check the table below to learn more:

ICON	QUALITY
	Excellent Link Quality 100%
	Data Frame Errors – Check WEP Settings
	Fair Link Quality
	Poor Link Quality or Not Linked
	Radio Off

The installation is entirely finished at the moment. Double-click the icon to launch the application and open the Wireless Settings dialog box, in which you may freely arrange your network connection afterwards.

Note: For more details about Wireless-G Configuration Tool, please refer to the User Manual from the supplied CD.

4. Verifying a Successful Installation

To confirm that your Wireless-G USB 2.0 Flex Adapter is properly installed, please follow the procedures below.

Step. 1 ▼

Right-click the My Computer desktop icon and choose Properties from the menu.

Step. 2 ▼

In the System Properties dialog box, click the Hardware tab, and then choose the Device Manager button.

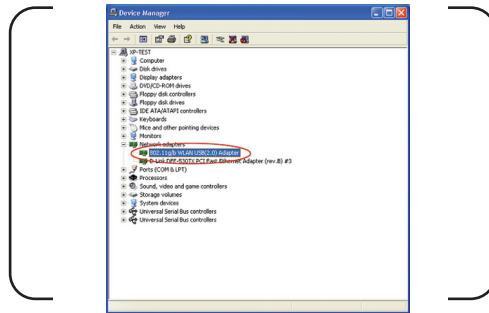
Step. 3 ▼

In the opened window, expand Network adapters to find the USB network adapter - 802.11g/b USB(2.0) Adapter. Right-click over the item and choose Properties.

Step. 4

From the opened dialog box, on the General tab, find the descriptions under the Device Status pane to learn if the module is working properly. However, if there's an error message shown, please choose Uninstall from the opened menu while right-clicking over the USB Adapter item, to which a red or yellow icon is attached beside, in the Device Manager dialog box. Then restart your system and go through the installation procedures again.

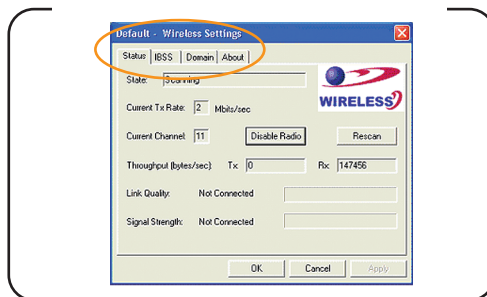
The following picture indicates a successful installation of the Wireless-G USB 2.0 Flex Adapter.



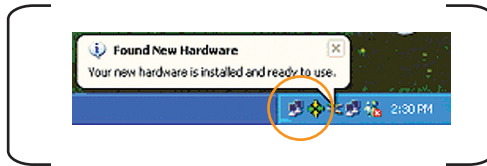
5. Installation Notes (Windows® XP)

If your system is running Windows XP, you shall find that four tabs are contained in the Wireless Settings dialog box after you've followed the instructions above and successfully installed the drivers. However, normally, the dialog box should be consisted of seven tabs. This is because Windows XP has its built-in configuration tools - **Windows XP Zero Configuration** to assist you in networking activities. It is recommended to utilize the attached **Wireless-G Configuration Tool** to enjoy more of the benefits it brings.

Thus, to employ your Wireless-G Configuration Tool under Windows XP, please proceed to the next step to change the default settings of Windows Zero Configuration to Wireless-G Configuration Tool.

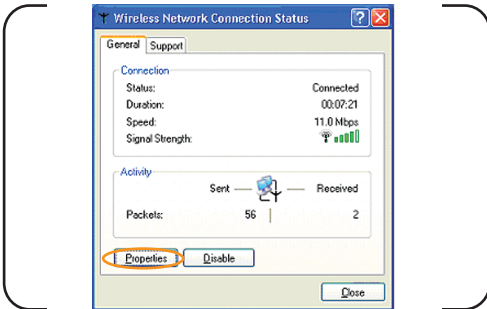


The Wireless Settings Dialog Box



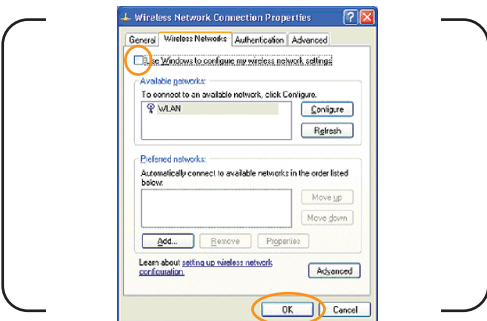
The Wireless-G Configuration Tool Tray Icon

- a) Right-click the Network Connections icon at the task bar to open the Wireless Network Connection Status dialog box, and then select Properties.



The Wireless Network Connection Status Dialog Box

- b) Choose the Wireless Networks tab in the Wireless Network Connection Properties dialog box, and remove the check from the Use Windows to configure my wireless network settings checkbox.



The Wireless Network Connection Properties Dialog Box

- c) Click OK. Now, you have successfully removed the Windows Zero Configuration.

6. Radio and TV Interference

This equipment has been tested and found to comply with the limits for a Class B digital device, pursuant to Part 15 of the FCC Rules. These limits are designed to provide reasonable protection against harmful interference in a residential installation. This equipment generates, uses and can radiate radio frequency energy and if not installed and used in accordance with the instructions, may cause harmful interference to radio communications. However, there is no guarantee that interference will not occur in a particular installation

IN NO EVENT SHALL THE DIRECT VENDOR'S LIABILITY EXCEED THE PRICE PAID FOR THE PRODUCT FROM DIRECT, INDIRECT, SPECIAL, INCIDENTAL, OR CONSEQUENTIAL DAMAGES RESULTING FROM THE USE OF THE PRODUCT, DISK OR ITS DOCUMENTATION.

The direct vendor makes no warranty or representation, expressed, implied, or statutory with respect to the contents or use of this documentation, and especially disclaims its quality, performance, merchantability, or fitness for any particular purpose.

The direct vendor also reserves the right to revise or update the device or documentation without obligation to notify any individual or entity of such revisions, or update. For further inquiries, please contact your direct vendor.

7. Warranty

IN NO EVENT SHALL THE DIRECT VENDOR'S LIABILITY FOR DIRECT, INDIRECT, SPECIAL, INCIDENTAL OR CONSEQUENTIAL DAMAGES RESULTING FROM THE USE OF THIS PRODUCT, DISK, OR ITS DOCUMENTATION EXCEED THE PRICE PAID FOR THE PRODUCT.

The direct vendor makes no warranty or representation, expressed, implied, or statutory with respect to the contents or use of this documentation, and especially disclaims its quality, performance, merchantability, or fitness for any particular purpose.

The direct vendor also reserves the right to revise or update the device or documentation without obligation to notify any individual or entity of such revisions, or updates. For further inquiries please contact your direct vendor.