

USB Print Server

User Manual (GPSU01)





Welcome

Thank you for purchasing this 1-port USB Print Server that allows any networked computer to share a USB printer. It complies with USB 1.1 specifications, and provides users with an auto-sensing 10/100Base-T port. It works with either 10BaseT or 100BaseT networks. This unit also supports multiple protocols and multiple operating systems, and it integrates Internet Printing Protocol (IPP) to allow users to print from any computer over a LAN/WAN or the Internet by specifying the device's URL. The built-in web management feature provides more convenience by allowing the user to configure, monitor and even reset the print server via a web browser. This eliminates the need to place the printer right next to the computer. Print jobs can be sent to a printer in another country just as easily as to a printer in the same office. Why bother sending a degraded fax image while you can print an original at the destination?

We hope that you will enjoy using your Print Server and find it to be a useful solution.

©2002 IOGEAR. All Rights Reserved. PKG-M0045

IOGEAR, the IOGEAR logo, MiniView, VSE are trademarks or registered trademarks of IOGEAR, Inc. Microsoft and Windows are registered trademarks of Microsoft Corporation. IBM is a registered trademark of International Business Machines, Inc. Macintosh, G3/G4 and iMac are registered trademarks of Apple Computer, Inc. IOGEAR makes no warranty of any kind with regards to the information presented in this document. All information furnished here is for informational purposes only and is subject to change without notice. IOGEAR, Inc. assumes no responsibility for any inaccuracies or errors that may appear in this document.

Table of Contents

Package Contents.....	02
Features.....	03
Requirements.....	04
Installation and Configuration.....	05
Printer Configuration for Mac OS.....	28
Setting up Print Server Remotely.....	31
Glossary.....	34
Technical Support.....	35
Limited Warranty.....	36

Package Contents

This package contains:

- (1) Print Server
- (1) External AC Power Adapter
- (1) Driver CD
- (1) User's Manual
- (1) Warranty Registration Card

* If any items are damaged or missing, please contact your dealer.

Features

- Easily connects your USB printer to a network
- Allows multiple computers to share one USB printer on the network
- Print from any computer on your network or from across the Internet
- Supports DHCP Client and multiple network protocols
- 10/100Mbps auto-sensing
- Supports Telnet and Web Management software

System Requirements

This USB print server supports:

- Windows 98SE/ME/NT/2000/XP
- Novell(iBindery/NDS)
- Mac OS 8.6 or Later
- Unix/Linux
- Printer with USB connection

Installation and Configuration

Hardware Setup

1. Connect the USB cable from the USB printer to the USB port on the print server;
2. Connect one end of the CAT5 patch cable to the CAT5 port on the print server;
3. Connect the other end of the CAT5 cable to the network. This print server works with various networks such as LAN, WAN, or Internet. It can be plugged into various type of ports, such as:
 - Network switch/hub;
 - Router;
 - Network outlets;
 - Bridges, such as the HomePlug Ethernet bridge.
4. Connect the AC adapters to the print server.

Setup Procedure for Windows 98/Me/2000/XP

1. Turn off the printer power.
2. Install protocol in Windows 2000/XP

Note: Although multiple protocols can be installed, it is preferred to install only one. The three most used network protocols are IPX/SPX, TCP/IP or NetBEUI (see glossary for further information on these protocols). TCP/IP has become the most commonly used protocol today.

Installation and Configuration

The procedure is as follows:

Select Control Panel >> Network and Dial-up Connections >> Local Area Connection >> Properties >> Install >> Protocol >> Add. Choose the protocol that you need.

3. Install driver for Print Server in Windows 2000/XP

a: Insert Setup disk and go to the corresponding drive using My Computer on your desktop. Follow this setup program to install the Network Print Monitor on your computer. The first window



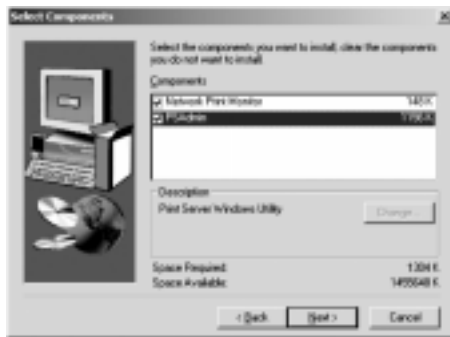
Installation and Configuration

Click Next on the following window to proceed to the Component Selection window:



Installation and Configuration

At the Component selection window, make sure both Network Print Monitor and PSAdmin are checked. Click Next to proceed to start installing these components.



Installation and Configuration

This process may take a few minutes.



Click Finish on the following window when the above process is complete.



Installation and Configuration

Install printer driver

1. If you are adding a new printer, or just allowing more computers to share a printer, you will have to install the printer driver on all the computers that you wish to print from. To install the printer drive, select Control Panel >> Printers >> select “Add Printer.”



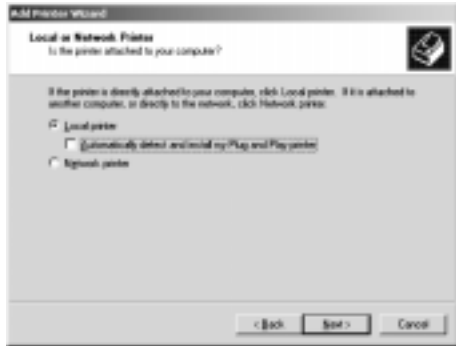
Installation and Configuration

Follow the “Add Printer Wizard.”



Installation and Configuration

2. Select Local Printer. Make sure that the box: "Automatically detect and install my Plug and Play printer" is unchecked.



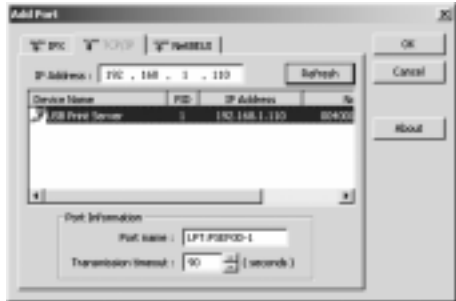
Installation and Configuration

3. Check "Create a new port," and select "Network Print Port," and click Next,



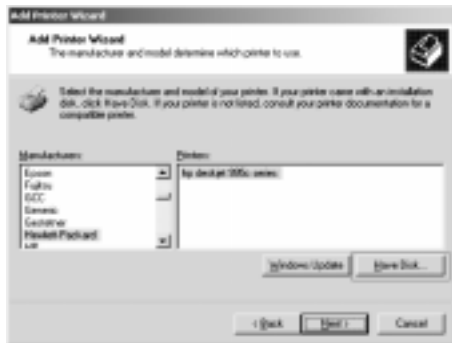
Installation and Configuration

4. Select your Print Server. If there are two print servers in your network, confirm their IP addresses. If the IP address is incorrect, type in the correct IP address and click "Refresh." Then click "OK."



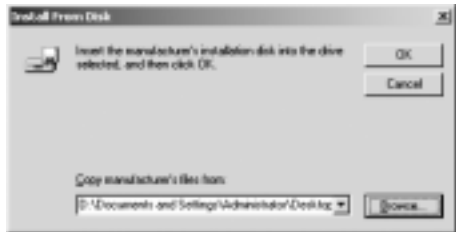
Installation and Configuration

5. Select the printer. Click “Have Disk” if you have an installation disk, or download the driver onto your computer.



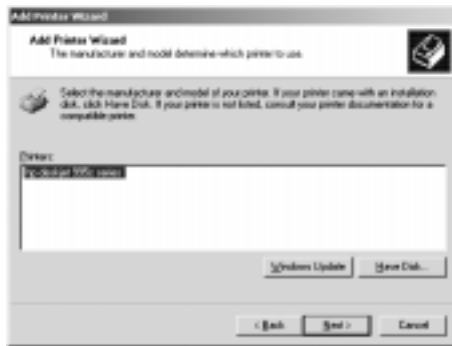
Installation and Configuration

Select the corresponding drive where the driver is located, or "Browse" for the driver. Click OK when the driver location is confirmed.



Installation and Configuration

6. Click Next to proceed with the Add Printer Wizard.



Installation and Configuration

7. Type the name of the printer or use default name provided by the printer manufacturer. If you have only one printer on the network, you should select this printer as the default printer. If you are adding a printer on the network, you will have to decide if you want to use it as the default printer. In the example below, the added printer is not selected as a default printer.



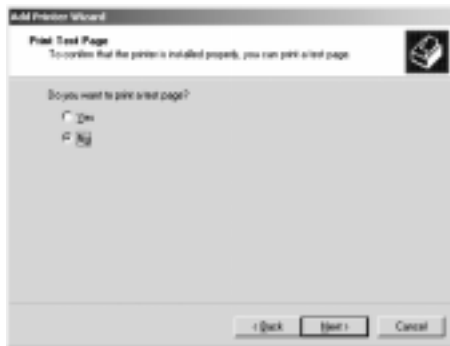
Installation and Configuration

8. Since the printer is connected to the network directly, not through any particular computer, select "Do not share this printer" in the following window.



Installation and Configuration

You can either select Yes or No on printing a test page in the following window, and then click Next.



Installation and Configuration

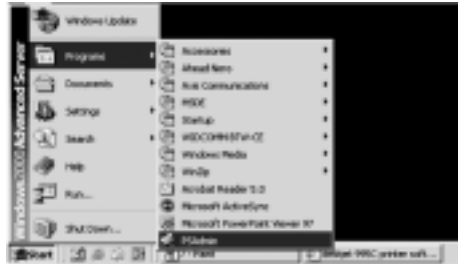
The installation of the driver is completed. Click Finish in the following window.



Installation and Configuration

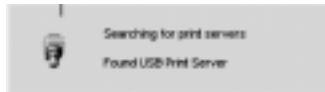
Confirm Print Server Property Settings

1. Now that you have installed the driver, you want to confirm the settings for this Print Server is appropriate. Select “Start” >> “Programs” >> “PSAdmin”



Installation and Configuration

2. Your computer will search for the Print Server



3. Select your Print Server and double click on it.



Installation and Configuration

4. You will now view the Print Server Properties. The “General” section allows you to view the name of your Print Server and assign/change the password.



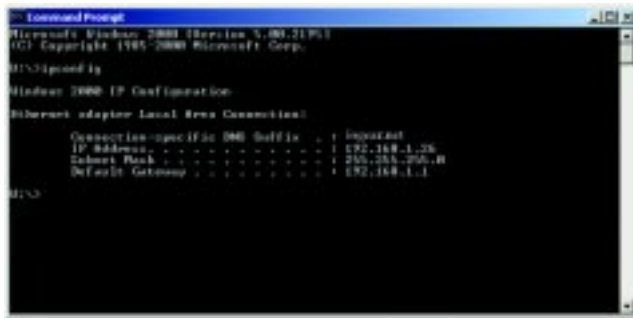
Installation and Configuration

5. Clicking the “TCP/IP” button in the General window allows you to view the IP address of your Print Server. You can either obtain a dynamic IP address from the DHCP server automatically, or assign a fixed IP address.



Installation and Configuration

Note: If you don't know the gateway address, you can contact the network administrator, or use the following procedure to find the Gateway address: click "Start" >> "Programs" >> "Accessories">> "Command Prompt," then type "ipconfig"; you will be able to see the default Gateway address from a window similar to the following:



```
Microsoft Windows [Version 5.00.2195]
(C) Copyright 1985-2000 Microsoft Corp.

C:\>ipconfig

Microsoft Windows IP Configuration

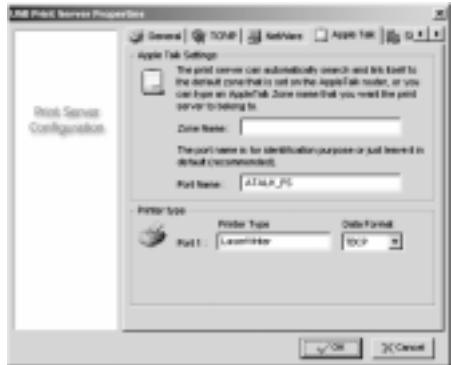
Ethernet adapter Local Area Connection:

    Connection-specific DNS Suffix . . . : localnet
    IP Address . . . . . : 192.168.1.26
    Subnet Mask . . . . . : 255.255.255.0
    Default Gateway . . . . . : 192.168.1.1

C:\>
```

Installation and Configuration

6. “Netware,” “AppleTalk,” “SNMP” and “Advanced” are other protocols in which you may configure your Print Server. Clicking these buttons at the Configuration window will lead you to these particular configurations. The selection of the protocols is based upon the type of the printers, for instance, some postscript printers use Appletalk. You may need to contact the printer manufacturer if you are not certain about the protocol of that particular printer.



7. The “Advanced” window is designed to control the speed of the parallel port only; this option would not affect the performance of the USB print servers.

Installation and Configuration

Printer Configuration for Mac OS

NOTE: The USB print server ONLY supports post-script printers under Mac OS 8.6 or higher which are supported by LaserWriter. Please refer to the Apple website www.apple.com for a complete list of supported post-script printers.

1. Go to the Print Center by going to Macintosh HD > Applications > Utilities > Print Center.
2. Click on Add Printer.



Installation and Configuration

3. Change Directory Service to AppleTalk and make sure that the AppleTalk Network is set to Local AppleTalk Zone.



4. Select the available Print Server (e.g. ATALK_PS_40EFOD-1) and click on Add.

Installation and Configuration

5. A list of post-script printers will appear. Select the appropriate printer and click on Add.



6. The necessary files will be installed. The process may take a few minutes.

7. Congratulations! The printer setup for your Mac is now complete.

Installation and Configuration

Setting up print server remotely

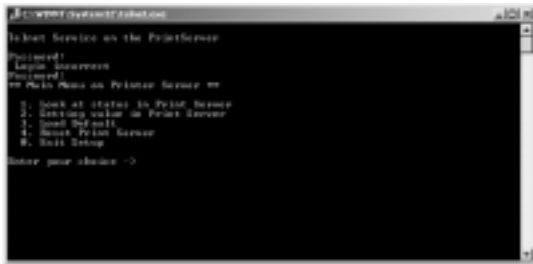
Telnet Access

You can obtain access to the Print Server menu by using telnet:

1. Select “Start” >> “Run”
2. In the “open” command, type: “telnet IP address (IP address of the Print Server)”. For example, “telnet 192.168.1.110”.
3. When the prompt asks you to enter a password, press Enter.

Installation and Configuration

4. Now you should be able to view the following screen and make your selections. The steps of setting up is similar to the steps of setting it up locally.



Web-based Access

Another method to set up the Print Server remotely is through an Internet browser.

1. Type the IP address of the Print Server in the browsers window
(<http://IP address>, for instance, <http://192.169.1.110>)

Installation and Configuration

2. You should be able to view the following screen and make your selections. The set up step is similar the steps to set up the print server locally.



Once the print server is set up remotely, printing remotely will be very similar to printing locally.

IPX/SPX: Internetwork **P**acket **E**xchange (IPX) is a networking protocol used by the Novell NetWare operating systems. It is a datagram protocol used for connectionless communications. **S**equenced **P**acket **E**xchange (SPX) is a transport layer protocol (layer 4 of the OSI Model) also used in Novell NetWare networks. The SPX layer sits on top of the IPX layer (layer 3) and provides connection-oriented services between two nodes on the network. SPX is used primarily by client/server applications. Whereas the IPX protocol is similar to IP, SPX is similar to TCP. Therefore, IPX/SPX together provides a connection services similar to TCP/IP. It is routable and can be used to create large professional networks. Usually, it is not used in home-networks, unless explicitly required by some computer games.

TCP/IP: Transmission **C**ontrol **P**rotocol/**I**nternet **P**rotocol (TCP/IP) is the suite of communications protocols used to connect hosts on the Internet. It utilizes several protocols (the two main ones being TCP and IP). TCP/IP is built into the UNIX operating system and is used by the Internet, making it the de facto standard for transmitting data over networks.

NetBEUI: **N**et**B**ios **E**nhanced **U**ser **I**nterface is an enhanced version of the NetBIOS protocol used by network operating systems such as LAN Manager, LAN Server, Windows 95/NT and Windows for Workgroups. This is considered to be a very fast protocol as long as the computer name and workgroup are defined correctly and is a good choice for small home-networks. However it is not routable, it can not be used to connect networks in different locations and it is not supported by Microsoft on Windows XP.

Technical Support

If you need technical support, please check out our IOGEAR Tech Info Library (T.I.L.) at www.iogear.com/support for the latest tips, tricks, and troubleshooting. The IOGEAR T.I.L. was designed to provide you with the latest technical information about our products. Most of the answers to your questions can be found here, so please try it out before contacting technical support.

Technical support is available Monday through Friday from 8:00 am to 5:00 pm PST and can be reached at (949) 428-1111

Limited Warranty

IN NO EVENT SHALL THE DIRECT VENDOR'S LIABILITY FOR DIRECT, INDIRECT, SPECIAL, INCIDENTAL OR CONSEQUENTIAL DAMAGES RESULTING FROM THE USE OF THE PRODUCT, DISK OR ITS DOCUMENTATION EXCEED THE PRICE PAID FOR THE PRODUCT.

The direct vendor makes no warranty or representation, expressed, implied, or statutory with respect to the contents or use of this documentation, and especially disclaims its quality, performance, merchantability, or fitness for any particular purpose.

The direct vendor also reserves the right to revise or update the device or documentation without obligation to notify any individual or entity of such revisions, or updates. For further inquires please contact your direct vendor.



Contact info.

23 Hubble • Irvine, CA 92618 • (P) 949.453.8782 • (F) 949.453.8785 • www.iogear.com