

A solid green vertical bar is positioned to the left of the title text.

User Manual

1-port USB 2.0 Print Server

GPSU21

PART NO. M1210-b

www.iogear.com



Welcome

Thank you for purchasing this 1-port USB 2.0 Print Server that allows any networked computer to share a USB printer. It complies with USB 2.0 specifications (and is backward compatible with USB 1.1), and provides an auto-sensing Ethernet port that works with either 10Base-T or 100Base-T networks. This unit also supports multiple protocols and multiple operating systems, and it integrates Internet Printing Protocol (IPP) to allow users to print from anywhere using the internet. The built-in web management feature provides more convenience by allowing the user to configure, monitor and even reset the print server via a web browser. This eliminates the need to place the printer right next to the computer. Print jobs can be sent to a printer in another country just as easily as to a printer in the same office. Why bother sending a degraded fax image while you can print an original at the destination?

We hope that you will enjoy using your Print Server and find it to be a useful solution.

Table of Contents

Package Contents	5	Setup Internet Printing – Windows Vista	32
Features	6	Technical Support	39
System Requirements	7	Federal Communications Commission (FCC) Statement	40
Hardware Installation	8	CE Compliance	41
Software Installation – Windows XP	9	Limited Warranty	42
Software Installation – Windows Vista	17	Contact	43
Software Installation - Mac	27		
Setup Internet Printing – Windows XP	29		

Package Contents

This package should contain:

1 x USB 2.0 Print Server

1 x CAT5 Patch Cable

1 x Power Adapter

1 x Installation & Manual CD

1 x Warranty/Registration Card

* If any items are damaged or missing, please contact your dealer.

Features

- Easily connects your USB printer to a network
- Allows multiple computers to share one USB printer on the network
- Print from any computer on your network or from across the Internet
- Supports DHCP Client and multiple network protocols
- 10Base-T/100Base-T auto-sensing
- Supports Telnet and Web Management software

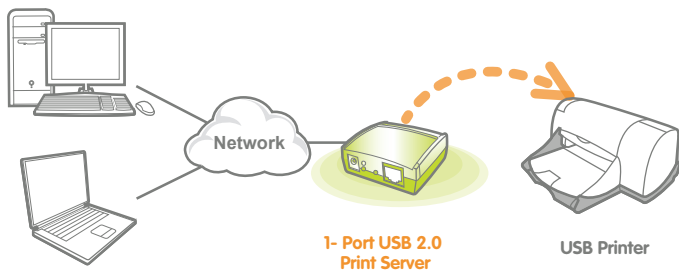
System Requirements

This USB 2.0 Print Server supports:

- Windows® 2000, Windows XP, Windows 2003, Windows 7, Windows 8, and Windows10
- Mac OS 9.22 or later
- Unix/Linux
- Printer with a USB connection

Hardware Installation

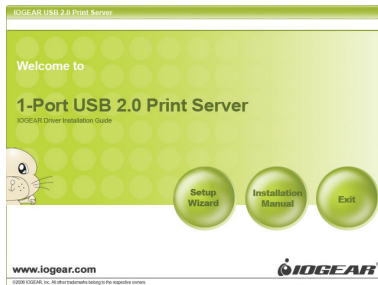
1. Connect a USB cable from the printer to the USB port on the print server.
2. Connect one end of the ethernet patch cable to the ethernet port on the print server.
3. Connect the other end of the ethernet cable to the network. It can be plugged into a router, ethernet switch/hub, or bridge.
4. Connect the Power adapter to the print server.



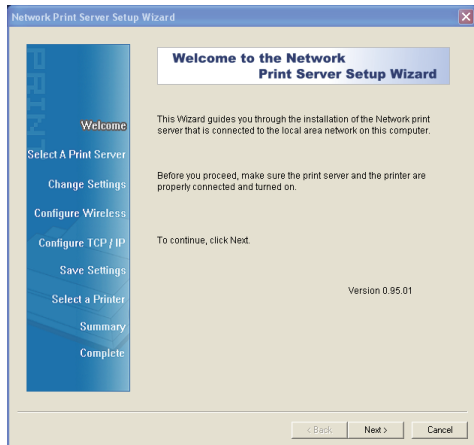
Software Installation – Windows XP

Important Note: Please make sure your printer driver is properly installed on your system before installing the software for print server.

1. Insert the installation CD into the CD-ROM of your computer. The setup utility will launch automatically. If it does not, browse to your CD drive and launch the autorun.exe file from the CD. Click the **Setup Wizard** option from the main menu.

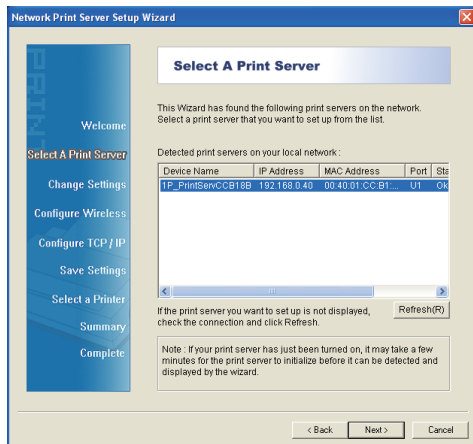


2. A wizard will guide you through the entire process for Windows XP computers. Click **Next** to continue.

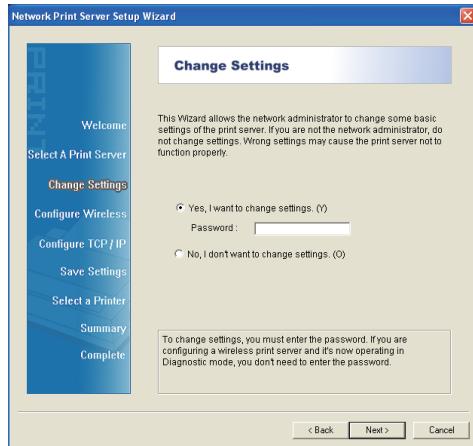


3. The wizard will scan your network for the print server and display results in the list. If no server is found, disable all firewall software and any extra network cards (such as a wireless adapter) on your computer except the one that connects to the network the print server is on, then click **Refresh** to search again.

Select the available print server in the list and click **Next** to continue.



4. Changing the network settings of the print server to a fixed IP address is not necessary but will provide more performance stability, especially in the event of a power outage. It can also be useful if you are setting up IPP (Internet Printing Protocol) to print over the Internet. Click **Next** and skip to step 9 if you do not need to specify an IP address. Otherwise, select the option to change settings (no password is needed by default) and then click **Next**.



5. Here you can specify the network settings the print server will use. If you will be printing from the Internet, it is important that the Gateway IP Address is set to the IP of your router. Please visit your router's user manual for more details. Click **Next** to continue.

The screenshot shows the 'Network Print Server Setup Wizard' window. On the left is a blue sidebar with a list of steps: 'Welcome', 'Select A Print Server', 'Change Settings', 'Configure Wireless', 'Configure TCP / IP' (highlighted in orange), 'Save Settings', 'Select a Printer', 'Summary', and 'Complete'. The main area is titled 'TCP/IP Settings' and contains the following text: 'Specify TCP/IP settings for the print server. The print server can be set up either to obtain IP address from a DHCP server on the network or to use a static IP address.' Below this text are two radio buttons: 'Obtain an IP address automatically (use DHCP)' and 'Specify an IP address' (which is selected). Under the selected option, there are three input fields: 'IP Address' with the value '192.168.1.60', 'Mask IP Address' with the value '255.255.255.0', and 'Gateway IP Address' with the value '192.168.1.1'. At the bottom of the main area, a note states: 'It's highly recommended that you set up the print server to use a static IP address. Make sure the IP address is correctly entered for the print server to work properly.' At the bottom of the window are three buttons: '< Back', 'Next >', and 'Cancel'.

Network Print Server Setup Wizard

TCP/IP Settings

Specify TCP/IP settings for the print server. The print server can be set up either to obtain IP address from a DHCP server on the network or to use a static IP address.

☐ Obtain an IP address automatically (use DHCP)

☒ Specify an IP address

IP Address: 192.168.1.60

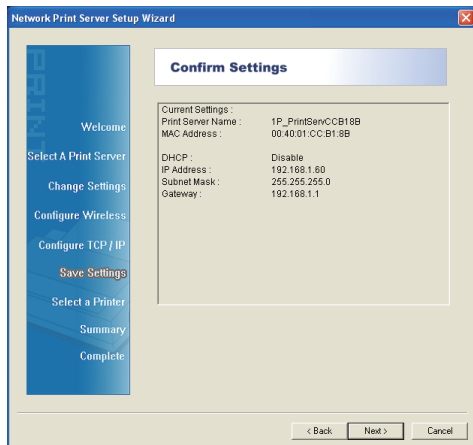
Mask IP Address: 255.255.255.0

Gateway IP Address: 192.168.1.1

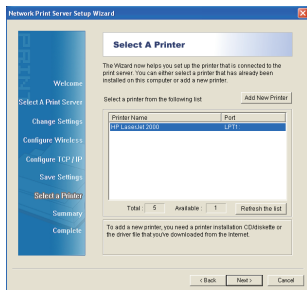
It's highly recommended that you set up the print server to use a static IP address. Make sure the IP address is correctly entered for the print server to work properly.

< Back Next > Cancel

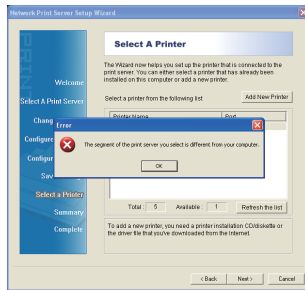
6. A summary screen will show the name of the printer to be modified and the IP of the print server which will be used. If this information is correct click **Next**.



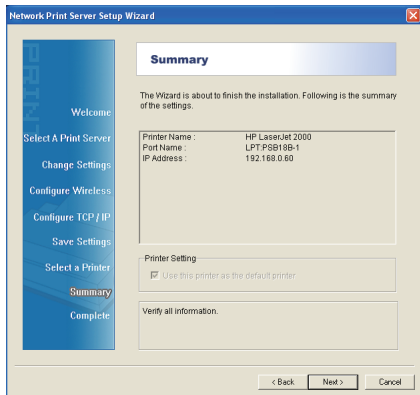
7. All existing printers installed on your computer will show up in this list. Select the model that is now attached to the print server and click **Next** to continue. If the printer you are setting up does not show up in the list, click **Add New Printer** and install your printer's drivers as needed. If asked which port to use, choose LPT1 but do NOT print a test page yet. The printer will be changed to the correct port in the next step.



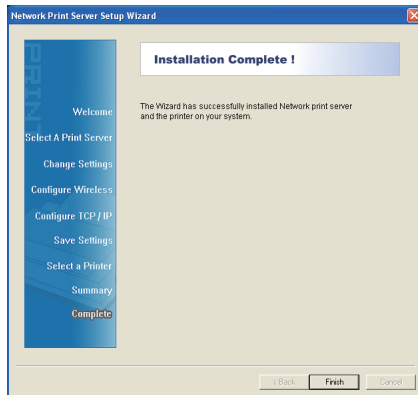
8. If you get the following message, the print server's IP settings are not set up correctly for your network. Click **Back** until you see the screen in step 4, then change the print server's network settings. You may use DHCP to set them automatically if the print server is connected to a router.



9. Setup of your print server is now complete.
Click **Finish** to close the wizard.



10. Setup of your print server is now complete.
Click **Finish** to close the wizard.



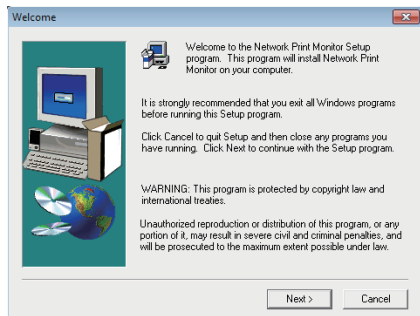
Software Installation – Windows Vista

Important Note: Please make sure your printer driver is properly installed on your system before installing the software for print server.

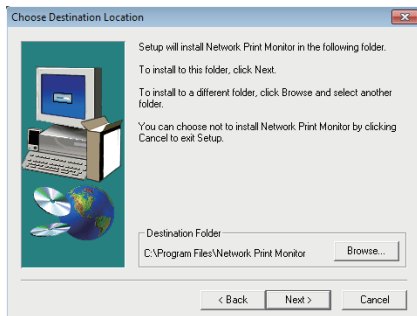
1. Insert the installation CD into the CD-ROM of your computer. The setup utility will launch automatically. If it does not, browse to your CD drive and launch the autorun.exe file from the CD. Click the **Setup Wizard** option from the main menu.



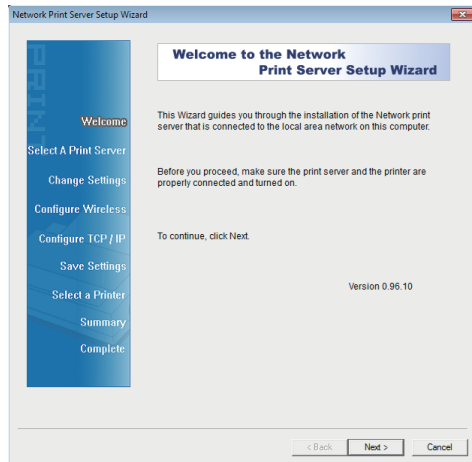
2. The installation wizard will take you through the installation process for Windows Vista computers. Click **Next** to continue.



3. The installation wizard will install the files to the designated folder, but you may also change the destination folder of your choice. Otherwise, click **Next** to continue.

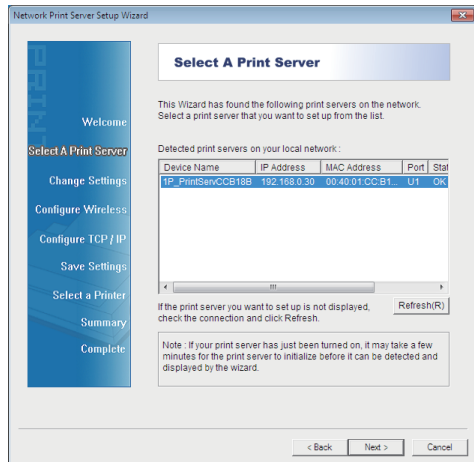


4. The print server setup wizard will then guide you through the entire process on Windows Vista computers. Click **Next** to continue.

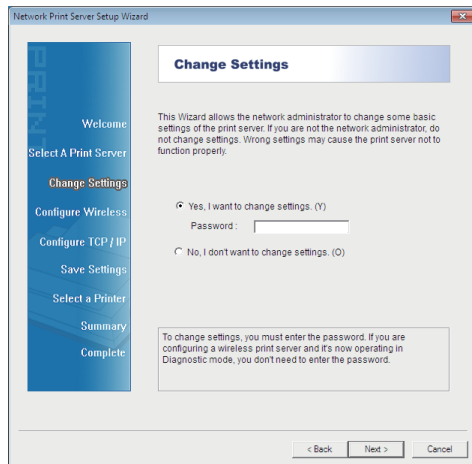


5. The wizard will scan your network for the print server and display results in the list. If no server is found, disable all firewall software and any extra network cards (such as a wireless adapter) on your computer except the one that connects to the network the print server is on, then click **Refresh** to search again.

Select the available print server in the list and click **Next** to continue.



6. Changing the network settings of the print server to a fixed IP address is not necessary but will provide more performance stability, especially in the event of a power outage. It can also be useful if you are setting up IPP (Internet Printing Protocol) to print over the Internet. Click **Next** and skip to step 9 if you do not need to specify an IP address. Otherwise, select the option to change settings (no password is needed by default) and then click **Next**.



7. Here you can specify the network settings the print server will use. If you will be printing from the Internet, it is important that the Gateway IP Address is set to the IP of your router. Please visit your router's user manual for more details. Click **Next** to continue.

The screenshot shows the 'Network Print Server Setup Wizard' window. On the left is a blue sidebar with a vertical list of steps: 'Welcome', 'Select A Print Server', 'Change Settings', 'Configure Wireless', 'Configure TCP / IP' (highlighted in orange), 'Save Settings', 'Select a Printer', 'Summary', and 'Complete'. The main area is titled 'TCP/IP Settings'. It contains the instruction: 'Specify TCP/IP settings for the print server. The print server can be set up either to obtain IP address from a DHCP server on the network or to use a static IP address.' There are two radio buttons: 'Obtain an IP address automatically (use DHCP)' and 'Specify an IP address' (which is selected). Below the radio buttons are three text input fields: 'IP Address' with the value '192.168.0.40', 'Mask IP Address' with the value '255.255.255.0', and 'Gateway IP Address' with the value '192.168.0.1'. At the bottom of the main area is a note in a box: 'It's highly recommended that you set up the print server to use a static IP address. Make sure the IP address is correctly entered for the print server to work properly.' At the bottom of the window are three buttons: '< Back', 'Next >', and 'Cancel'.

Network Print Server Setup Wizard

TCP/IP Settings

Specify TCP/IP settings for the print server. The print server can be set up either to obtain IP address from a DHCP server on the network or to use a static IP address.

☐ Obtain an IP address automatically (use DHCP)

☒ Specify an IP address

IP Address: 192.168.0.40

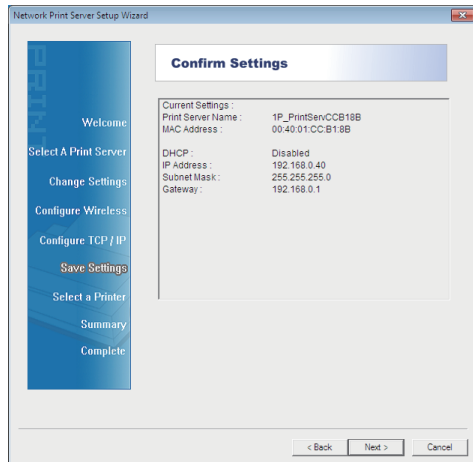
Mask IP Address: 255.255.255.0

Gateway IP Address: 192.168.0.1

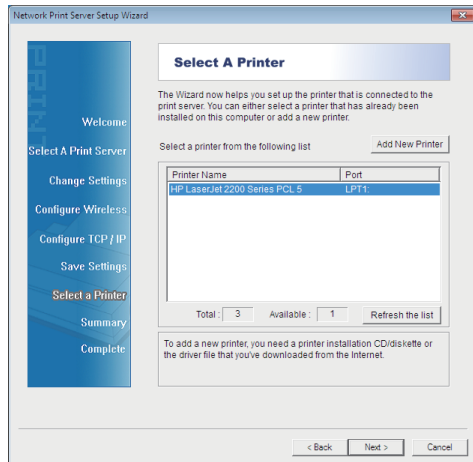
It's highly recommended that you set up the print server to use a static IP address. Make sure the IP address is correctly entered for the print server to work properly.

< Back Next > Cancel

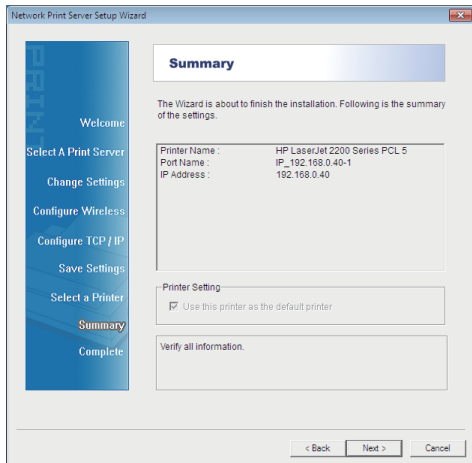
8. Review the settings you have entered carefully and click **Next** to confirm that they are correct and save them to the print server.



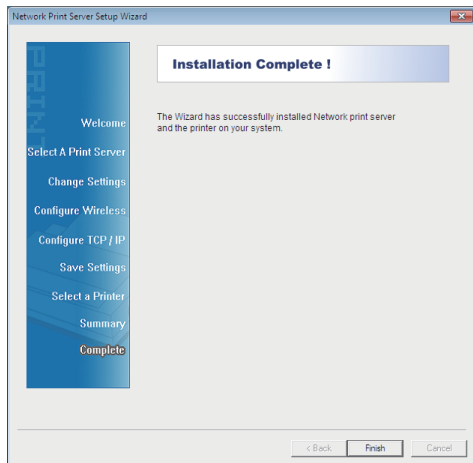
9. All existing printers installed on your computer will show up in this list. Select the model that is now attached to the print server and click **Next** to continue. If the printer you are setting up does not show up in the list, click **Add New Printer** and install your printer's driver as needed. If asked which port to use, choose LPT1 but DO NOT print a test page yet. The printer will be changed to the correct port in the next step.



10. A summary screen will show the name of printer to be modified and the IP of the print server which will be used. If this information is correct, click **Next** to continue.



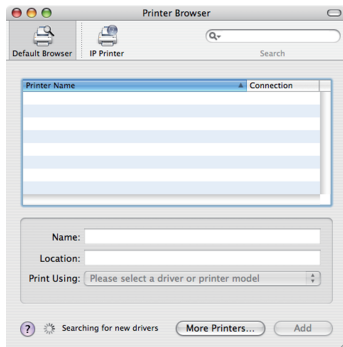
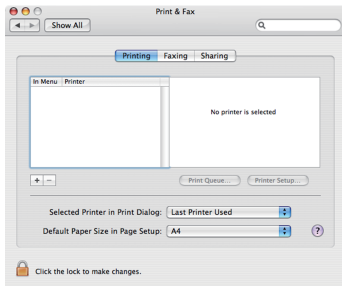
11. Setup of your print server is now completed.
Click **Finish** to close the wizard.



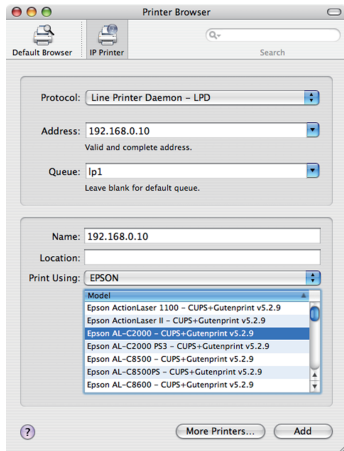
Software Installation - Mac

Software Installation - Mac

1. No software from the Setup CD is needed on Macintosh systems. Simply open the **Print and Fax settings** from your System Preferences window. Click the plus (+) button to setup a new printer.
2. At the top of the Printer Browser, click the icon for IP printer.



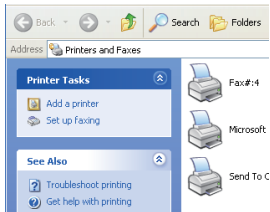
3. Select the LPD protocol, then type in the IP address of the print server. Type **"lp1"** with lowercase letters for the name of the Queue. Name the new printer and select the model below. Click **Add** when you are finished, and you are ready to print.



Setup Internet Printing – Windows XP

Software Installation - IPP

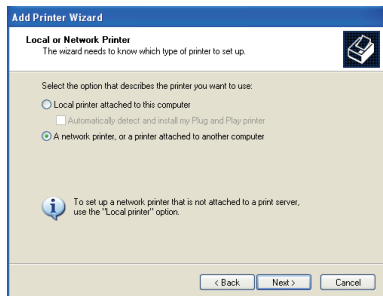
1. To print from a remote location, you will first need to make sure port 631 is forwarded through your router's firewall to the print server. Then simply set up IPP using the address `http://(print-server-ip):631/lp1` as shown here on an example Windows XP system. Click **Add** a printer from your printers and faxes window to begin.



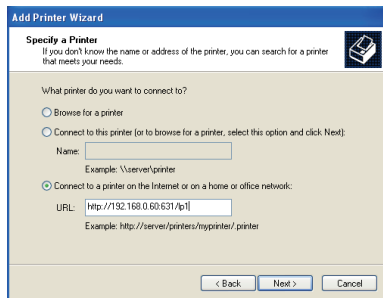
2. Click **Next** when the Add Printer Wizard appears.



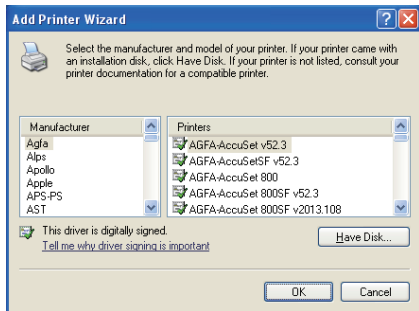
3. Select the option for a network printer, then click **Next**.



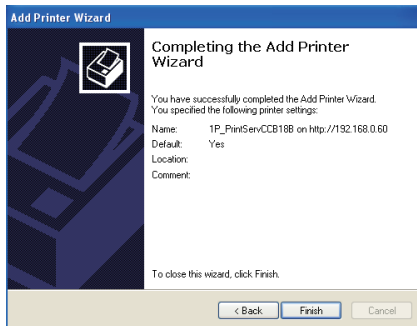
4. Select the option to connect to a printer on the internet, and type in the full IPP address as shown. You must use the external, or WAN, IP address of your router if the print server is behind one. You must also specify port 631 and queue name "lp1" in lowercase. Click **Next** to continue.



5. The wizard will ask you to choose the model of your printer. Click **OK** when you have chosen the appropriate driver.



6. Click **Finish** to complete the wizard and begin printing to your home or office printer from anywhere in the world.

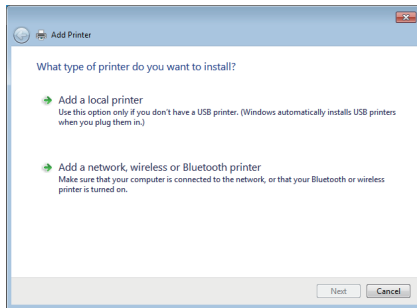


Setup Internet Printing – Windows Vista

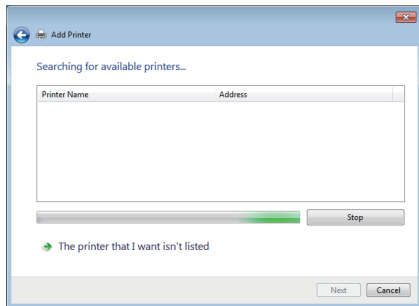
1. Click on the Vista logo, select Control Panel, then double click on Printers. Click on **Add a printer** to continue.



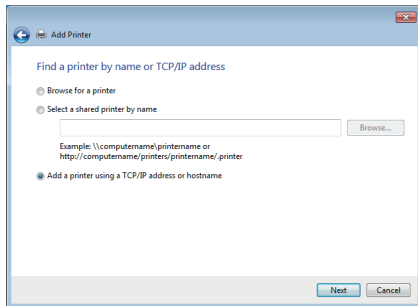
2. Click on **Add a network, wireless or Bluetooth printer** to continue.



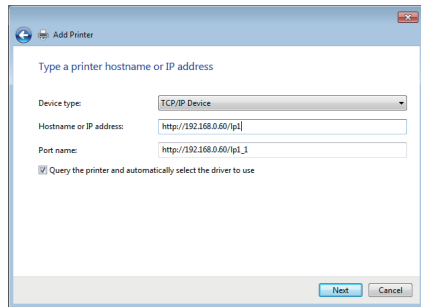
3. Since we are setting up a new IPP connection, click on **The printer that I want isn't listed** to continue.



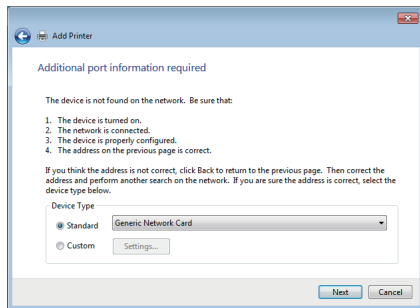
4. Select the option **Add a printer using a TCP/IP address or hostname**, then click on **Next** to continue.



5. From the Device type drop down menu, select **TCP/IP** Device from the list. For the Hostname or IP address, please put in “**http://(router ip):631/lp1**”. The router IP address is the WAN IP address on your router, please refer to the user manual of your router for detail information. The 631 is a special port number that is needed for standard IPP service. After putting in all these information, click on **Next** to continue.

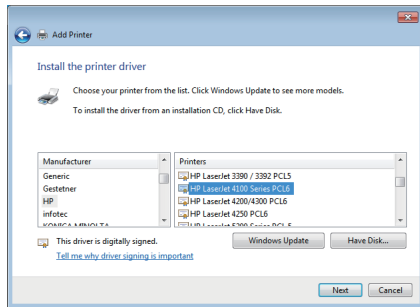


6. If you get the following message, please select the correct network card from the Standard drop down menu. If you are connecting through standard RJ-45 Ethernet connection, then select Generic Network Card. Otherwise, please make sure to select the correct device type then click on **Next** to continue.

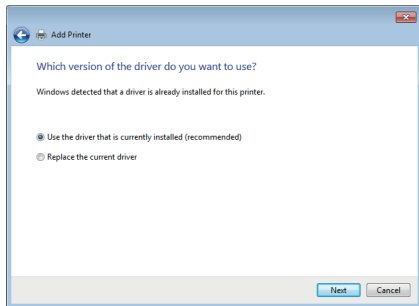


7. If you had installed the driver for your printer, then select the manufacturer of your printer from the Manufacturer list and select the correct model from the Printers list. Click on **Next** to continue.

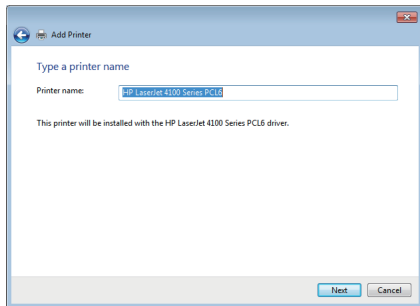
If you have not installed the driver for your printer, click on **Have Disk...**, insert the driver CD that comes with your printer into your computer, then follow the on screen prompts to finish the printer driver installation.



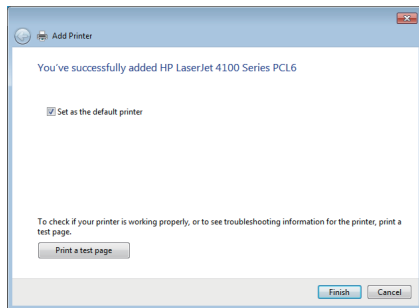
8. If you already have the driver installed, then select the option Use the driver that is currently installed (recommended) and click on **Next** to continue.



9. You can choose to change the printer name here if you like to, or you may leave it as the default name as displayed in the text box. Click on **Next** to continue.



10. You can choose to print a test page by clicking on the **Print a test page** to verify the connection is established correctly. After a test page is printed, then click on **Finish** to complete the setup.



Technical Support

If you need technical support, please check out our IOGEAR Tech Info Library (TIL) at <http://www.iogear.com/support> for the latest tips, tricks, and troubleshooting. The TIL is designed to provide you with the latest technical information about our products. Most of the answers to your questions can be found here, so please try it out before contacting technical support.

Technical support is available Monday through Friday from 8:00 am to 5:00 pm PST by calling our toll-free number 866-9-IOGEAR (866-946-4327). International callers may need to use the number 949-453-8782. Help is also available by e-mailing us at support@iogear.com.

Federal Communications Commission (FCC) Statement

This equipment has been tested and found to comply with the limits for a Class B digital device, pursuant to Part 15 of the FCC Rules. These limits are designed to provide reasonable protection against harmful interference in a residential setting. This product generates, uses, and can radiate radio frequency energy and, if not installed and used as directed, it may cause harmful interference to radio communications. Although this product complies with the limits for a Class B digital device, there is no guarantee that interference will not occur in a particular installation.

CE Compliance

This device has been tested and found to comply with the following European Union directives: Electromagnetic Capability (2004/108/EC), Low Voltage (2006/95/EC) and R&TTED (1999/5/EC).

Limited Warranty

WE'RE HERE TO HELP YOU!
NEED ASSISTANCE SETTING UP THIS PRODUCT?

Make sure you:

1. Visit www.iogear.com for more product information
2. Visit www.iogear.com/support for live help and product support

Warranty Information

This product carries a 3 Year Limited Warranty. For the terms and conditions of this warranty, please go to <http://www.iogear.com/support/warranty>

Register online at <http://www.iogear.com/register>

Important Product Information

Product Model _____

Serial Number _____

Contact

IOGEAR

iogear.custhelp.com
support@iogear.com
www.iogear.com

© 2018 IOGEAR® Part No. M1210-b

IOGEAR, the IOGEAR logo, are trademarks or registered trademarks of IOGEAR. Microsoft and Windows are registered trademarks of Microsoft Corporation. All other brand and product names are trademarks or registered trademarks of their respective holders. IOGEAR makes no warranty of any kind with regards to the information presented in this document. All information furnished here is for informational purposes only and is subject to change without notice. IOGEAR assumes no responsibility for any inaccuracies or errors that may appear in this document.

