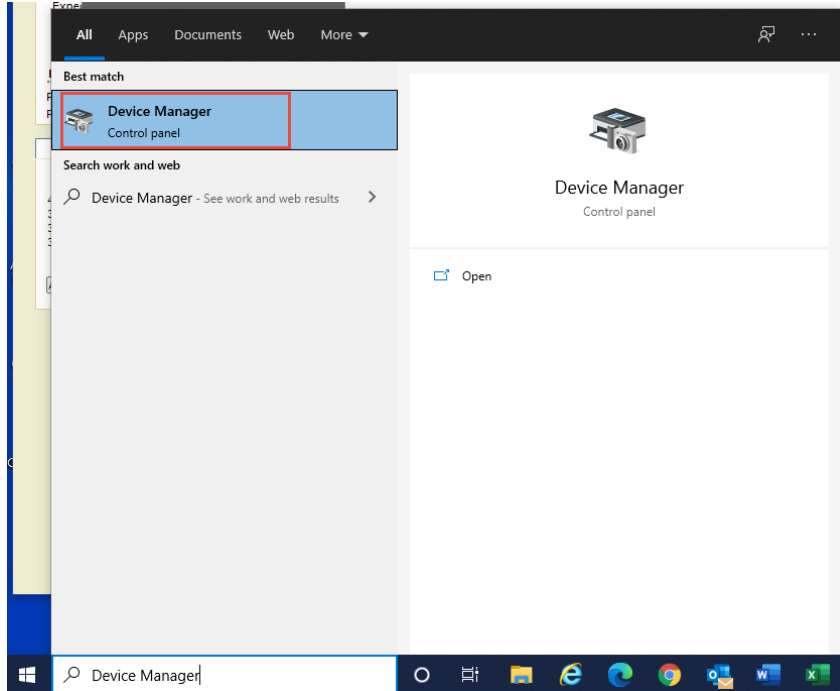


GBU521 Windows 10 12.0.1.820 Driver Install Steps

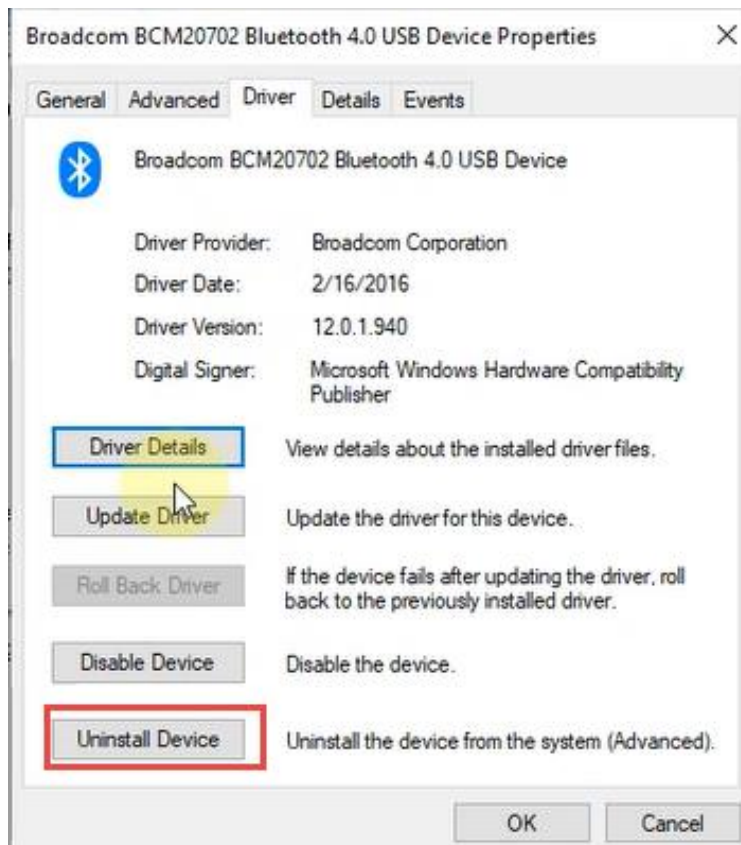
1. Plug in GBU521 to computer.
2. First, please make sure that any previous drivers are uninstalled. Open Device Manager by typing in Device manager into your search bar.



If you do not see it under Bluetooth and is showing under **Other Devices** as “**BCM20702A0**” you may skip to step 3.

If you see “**Broadcom BCM20702 Bluetooth 4.0 USB Device**” listed under **Bluetooth**, follow steps below to uninstall:

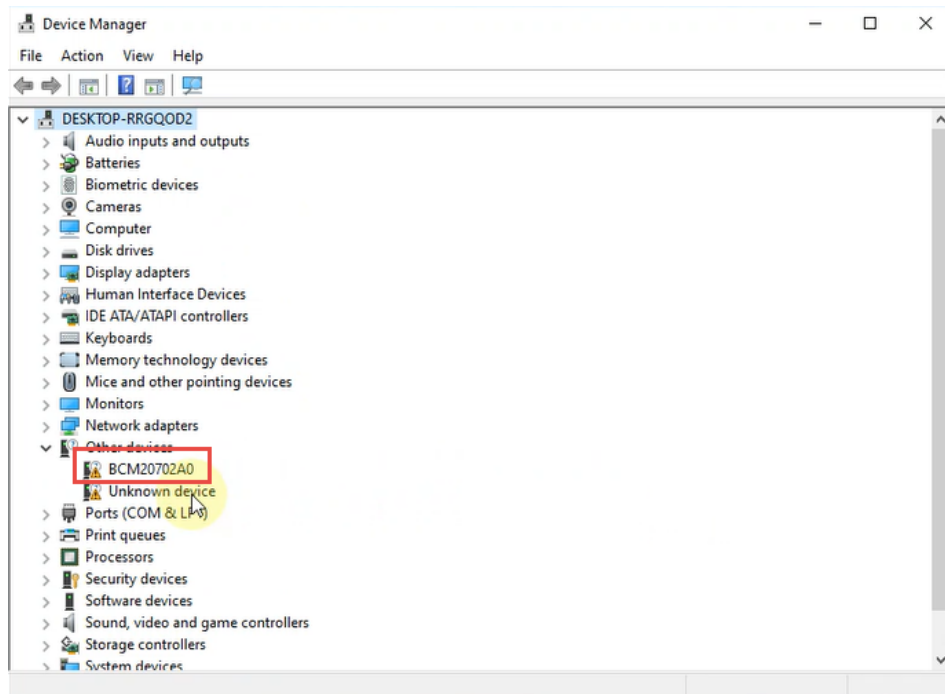
- Double click on “**Broadcom BCM20702 Bluetooth 4.0 USB Device**” to show its properties and select the “**Driver**” tab.
- Click on “**Uninstall Device**”



- Make sure “**Delete the driver software for this device**” is checked, then click **Uninstall**.

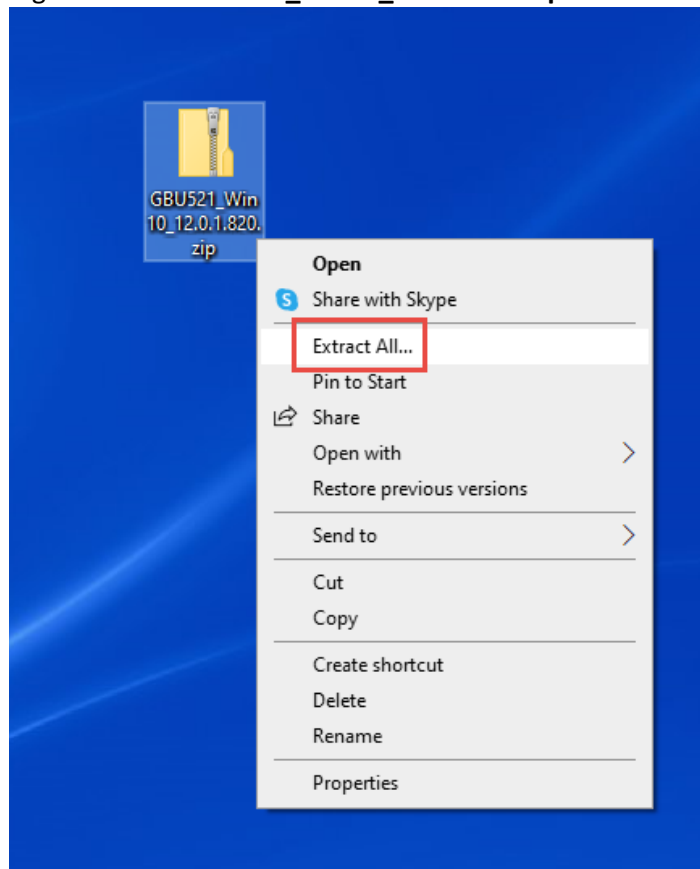


- After Uninstall is finished “**Device Manager**” should now show “**BCM20702A0**” under **Other devices**.



3. Next, we will install **GBU521 Windows 10 12.0.1.820 Driver**.

- Right click on “**GBU521_Win10_12.0.1.820.zip**” and select **Extract All**




← Extract Compressed (Zipped) Folders

Select a Destination and Extract Files


Files will be extracted to this folder:



☒ Show extracted files when complete

- Open extracted folder “**GBU521_Win10_12.0.1.820**”

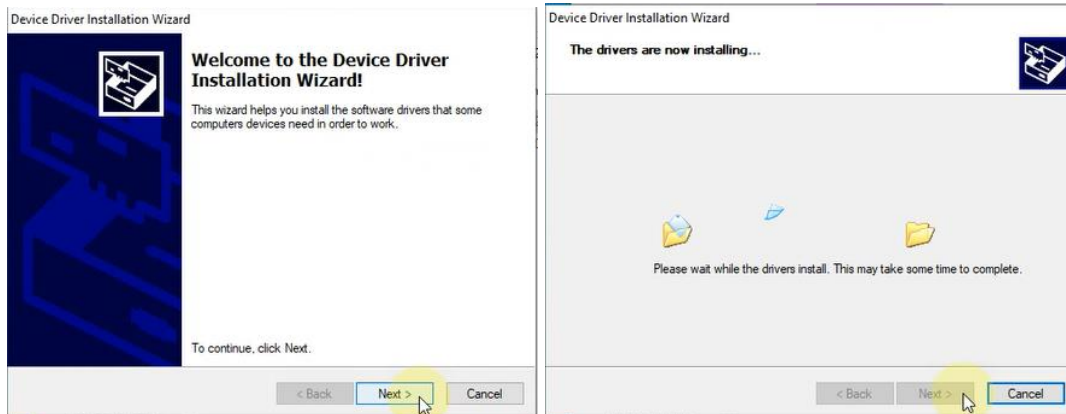
Name	Date modified	Type	Size
 GBU521_Win10_12.0.1.820	4/7/2021 1:36 PM	File folder	

- Open “**Setup**” folder and then double click on “**Setup.exe**” file.

Name	Date modified	Type	Size
 Setup	4/7/2021 1:36 PM	File folder	

Name	Date modified	Type	Size
 setup.exe	11/21/2015 5:59 AM	Application	25,944
 setup.ini	9/19/2013 1:20 AM	Configuration sett...	1

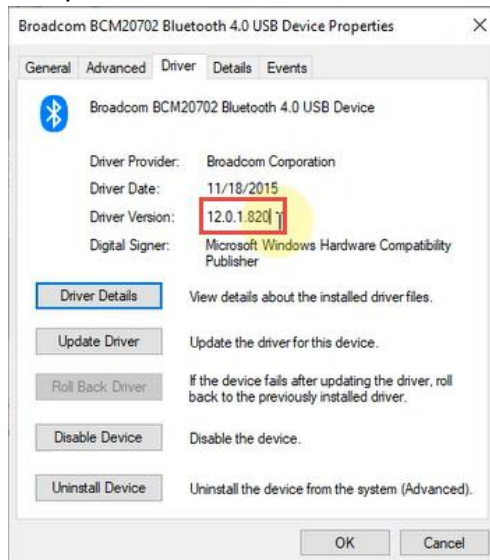
- Click “**Next**” and wait until installation is complete.



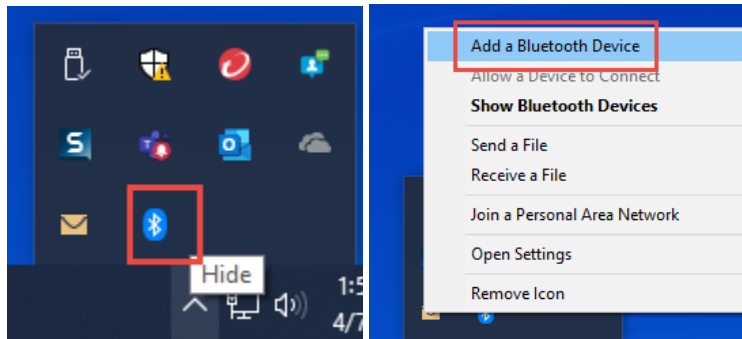
- Select **“Finish”** and **restart** your computer.



4. After your computer has restarted. Go back to **“Device Manager”** your GBU521 should show as **“Broadcom BCM20702 Bluetooth 4.0 USB Device”** under **Bluetooth**.
 - Double click on **“Broadcom BCM20702 Bluetooth 4.0 USB Device”** to show its properties and select the **“Driver”** tab.
 - If you see **“12.0.1.820”** under Driver version, then you GBU521 is installed and ready.



To pair a Bluetooth device, right click on the Bluetooth Icon from your **system tray** and select “**Add Bluetooth device**”



Refer to pairing process for your Bluetooth Device (Headphones, Mouse, etc.)