

GCL1816

16-Port 17" LCD Combo KVM Switch (TAA Compliant)



- Integrated 16-port KVM console featuring a 17" TFT LCD active matrix monitor, keyboard and touchpad
- 1280 x 1024 resolution on 17" rack mount LCD provides a sharp video display
- Adjustable depth to fit different sizes of racks
- Multi platform OS support - Windows®, Mac, Sun Solaris™, and Linux®
- Easy to operate - computer selection via front panel pushbutton LED's, intuitive OSD (on screen display), and hotkeys

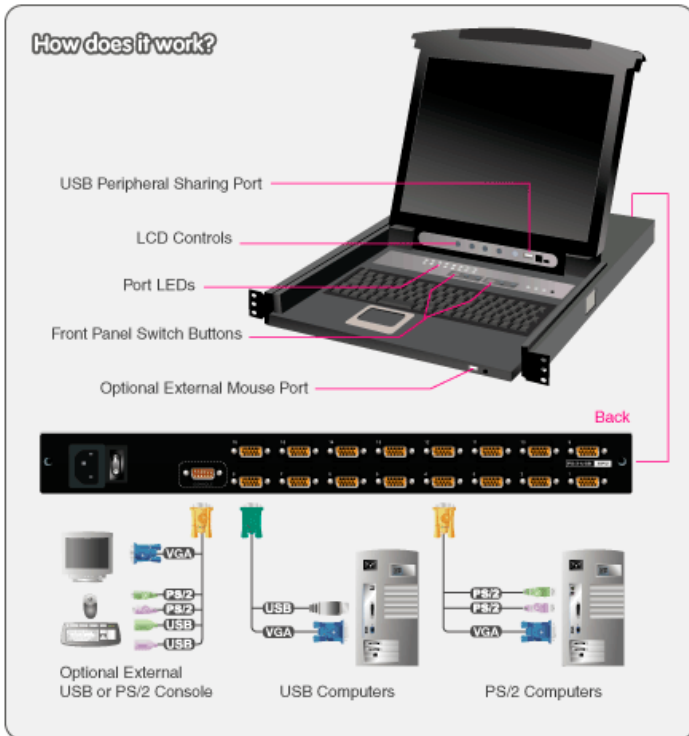
- Integrated 16-port KVM console featuring a 17" TFT LCD active matrix monitor, keyboard and touchpad
- 1280 x 1024 resolution on 17" rack mount LCD provides a sharp video display
- Adjustable depth to fit different sizes of racks
- Multi platform OS support - Windows®, Mac, Sun Solaris™, and Linux®
- Easy to operate - computer selection via front panel pushbutton LED's, intuitive OSD (on screen display), and hotkeys
- Auto Scan Mode to monitor all connected computers
- External USB mouse port for convenience
- External USB or PS/2 with VGA Console port
- Support special keys on Mac and Sun keyboards
- USB media port support for attached USB computers (system upgrades, etc) **

- Cascade up to 2 levels - control up to 256 computers from a single console*
- Security - 2 level password protection for OSD
- DDC Emulation - Video settings of each computer are automatically adjusted for optimal output to the monitor
- Rack mountable in a 19" (1U) system rack
- Firmware upgradeable
- Custom ASIC provides an auto-sensing function that recognizes the position of each station on the installation
- Fully Supports DDC2B

*Cascade with IOGEAR 8/16-Port VGA Combo KVM Switch (Model No. GCS1808 and GCS1716)

**Only systems connected with the USB KVM cables will be able to access the front USB port for system upgrades and shared peripherals





Requirements

Computers:

- VGA, SVGA, or MultiSync video graphics card with an HDB-15 port
- PS/2 mouse and keyboard ports (6-pin mini DIN) or 1 USB port

Operating Systems:

- Windows(R) XP, Windows Vista(R), Windows(R) 7*, Windows(R) 8, Windows(R) 8.1, Windows 10
 - Mac OS 9 to 10.x
 - Oracle(R) Solaris
 - Linux , Unix and other USB supported systems **
- **Additional drivers and support may be needed
 *IOGEAR's DynaSync provides the EDID support for Windows(R) 7

Package Contents

- 1 x 16-Port LCD KVM
- 1 x PS/2 KVM Cable
- 1 x USB KVM Cable
- 1 x Console Cable
- 1 x Cascade Cable
- 1 x Firmware Upgrade Cable
- 1 x Rack Mount Kit - Short Bracket(Fits 16 .6~32.2 Inch Depth) and Long Brackets(Fits 26 .8~41.3 Inch Depth)
- 1 x Grounding Wire
- 1 x Power Cord
- 1 x Installation Guide
- 1 x Warranty Card

Specifications

Function	GCL1816
Computer Connections	
Direct	16
Daisy Chain or Cascading	256
Port Selection	
OSD, Hotkeys, Pushbuttons	
Connectors	
Console	1 x SPHD-18 Male
Power	1 x 3-Prong AC Socket
Console Connectors	
Monitor	1 x HDB-15 Female
Keyboard	PS/2 or USB
Mouse	PS/2 or USB
Extra Mouse	1 x USB Type A Female
Flash ROM Upgrade	1 x RJ-11 Female
CPU Connectors	
Keyboard, Mouse, and Monitor	16 x SPHD-15 Female
Switches	
Reset	1 x Semi-recessed Pushbutton
Power	1 x Rocker Switch
F/W Upgrade	1 x Switch
LCD Adjustment	4 x Pushbutton
LCD Power	1 x LED Pushbutton (Orange)
Port Selection	4 x Pushbutton
LEDs	
On Line	16 (Orange)
Port ID	4 x 7 Segment LED Display (Yellow)
Power On	Dark Green
Emulation	
Keyboard	PS/2, USB
Mouse	PS/2, USB
Video Resolution	
1280 x 1024 @ 75Hz; DDC2B	
Scan Interval	
1-255 Seconds	
Power Input Rating	
Per AC Power Inlet, 50/60Hz	100~240VAC, 50/60Hz, 1A
Power Consumption	
120V, 28W	
Environment	
Operation Temperature	0~40°C
Storage Temperature	-20~60°C
Humidity	0~80% RH; Non-condensing
Housing	
Case	Metal and Plastic

Dimensions	GCL1816
Unit Dimensions	
Height	1.75in.
Depth	25in.
Width	19in.
Unit Package Dimensions	
Height	5.5in.
Width	26.75in.
Depth	28.5in.
Weight	
Unit Pack Wt.	44.36lb
Unit Wt. w/accessories	34.32lb
Unit Wt.	29.03lb